

Equaliser - Equaliser

$\text{♩} = 120,000000$

Synth Pad (new age)

More Drum

Taiko Drum

$\text{♩} = 120,000000$

Trombone

3

Synth Pad (new age)

More Drum

Taiko Drum

Trombone

5

Synth Pad (new age)

More Drum

Taiko Drum

Trombone

7

Synth Pad (new age)

More Drum

Taiko Drum

Trombone

9

Synth Pad (new age)

More Drum

Taiko Drum

Trombone

11

Synth Pad (new age)

More Drum

Taiko Drum

Trombone

Detailed description: This system covers measures 11 and 12. The Synth Pad (new age) part consists of a continuous eighth-note pattern in the treble clef. The More Drum part is a complex rhythmic pattern in the alto clef. The Taiko Drum part is a complex rhythmic pattern in the bass clef. The Trombone part is silent in measure 11 and plays a chord in measure 12.

13

Synth Pad (new age)

More Drum

Taiko Drum

Trombone

Detailed description: This system covers measures 13 and 14. The Synth Pad (new age) part consists of a continuous eighth-note pattern in the treble clef. The More Drum part is a complex rhythmic pattern in the alto clef. The Taiko Drum part is a complex rhythmic pattern in the bass clef. The Trombone part plays a chord in measure 13 and a melodic line in measure 14.

15

Synth Pad (new age)

More Drum

Taiko Drum

Trombone

Detailed description: This system covers measures 15 and 16. The Synth Pad (new age) part consists of a continuous eighth-note pattern in the treble clef. The More Drum part is a complex rhythmic pattern in the alto clef. The Taiko Drum part is a complex rhythmic pattern in the bass clef. The Trombone part is silent in measure 15 and plays a melodic line in measure 16.

16

Synth Pad (new age)

More Drum

Taiko Drum

Trombone

18

Synth Pad (new age)

More Drum

Taiko Drum

Trombone

20

Synth Pad (new age)

More Drum

Taiko Drum

Trombone

22

Synth Pad (new age)

More Drum

Taiko Drum

Trombone

24

Synth Pad (new age)

More Drum

Taiko Drum

Trombone

26

Synth Pad (new age)

More Drum

Taiko Drum

Trombone

28

Synth Pad (new age)

More Drum

Taiko Drum

Trombone

30

Synth Pad (new age)

More Drum

Taiko Drum

Trombone

Synth Pad (new age)

Equaliser - Equaliser

♩ = 120,000000

The image displays a musical score for a Synth Pad in a 'new age' style. The score is written in 4/4 time and consists of 19 staves, each containing a dense texture of sixteenth notes. The key signature is one flat (B-flat). The tempo is indicated as 120,000,000. The score is divided into two measures per staff, with a repeat sign at the beginning of the second measure. The notes are primarily eighth and sixteenth notes, creating a continuous, flowing sound. The staves are numbered 3, 5, 7, 9, 11, 13, 15, 17, and 19 on the left side.

V.S.

Synth Pad (new age)

21

Musical notation for measures 21 and 22. The piece is in G major (one flat) and 4/4 time. Measure 21 consists of a continuous eighth-note arpeggiated pattern. Measure 22 continues this pattern with a slight melodic variation in the upper voice.

23

Musical notation for measures 23 and 24. Measure 23 features a melodic line with eighth-note arpeggios and some rests. Measure 24 continues with similar arpeggiated textures and melodic fragments.

26

Musical notation for measures 26 and 27. Measure 26 shows a melodic line with eighth-note arpeggios and rests. Measure 27 continues with similar textures and melodic fragments.

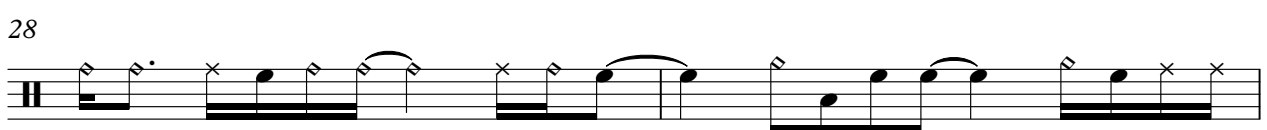
29

Musical notation for measures 29 and 30. Measure 29 features a melodic line with eighth-note arpeggios and rests. Measure 30 continues with similar textures and melodic fragments.

Equaliser - Equaliser

More Drum

♩ = 120,000000



V.S.

2

More Drum

30



Taiko Drum

Equaliser - Equaliser

♩ = 120,000000

3

5

7

9

11

13

15

17

19

V.S.

2

Taiko Drum

21

Musical notation for Taiko Drum, measures 21-22. The notation is in bass clef with a key signature of one flat (B-flat). It consists of two measures of music. Each measure contains a series of eighth notes, with some notes beamed together in groups of four or five. The rhythm is consistent throughout the two measures.

23

Musical notation for Taiko Drum, measures 23-24. The notation is in bass clef with a key signature of one flat (B-flat). It consists of two measures of music. Each measure contains a series of eighth notes, with some notes beamed together in groups of four or five. The rhythm is consistent throughout the two measures.

26

Musical notation for Taiko Drum, measures 26-27. The notation is in bass clef with a key signature of one flat (B-flat). It consists of two measures of music. Each measure contains a series of eighth notes, with some notes beamed together in groups of four or five. The rhythm is consistent throughout the two measures.

29

Musical notation for Taiko Drum, measures 29-30. The notation is in bass clef with a key signature of one flat (B-flat). It consists of two measures of music. Each measure contains a series of eighth notes, with some notes beamed together in groups of four or five. The rhythm is consistent throughout the two measures.

Trombone

Equaliser - Equaliser

♩ = 120,000000

7

15

20

24

28