

# Batman: Return of the Joker - Batman: Return of the Jol

$\text{♩} = 160,000000$

Batman: Return of the Joker

Feel free to edit

Main Stage Theme

4

Batman: Return of the Joker

Feel free to edit

Main Stage Theme

7

Batman: Return of the Joker

Feel free to edit

Main Stage Theme

10

Batman: Return of the Joker

adam@netacc.net

Feel free to edit

Main Stage Theme

13

Batman: Return of the Joker

adam@netacc.net

Main Stage Theme

16

Batman: Return of the Joker

adam@netacc.net

Main Stage Theme

18

Batman: Return of the Joker

adam@netacc.net

Main Stage Theme

20

Batman: Return of the Joker

adam@netacc.net

Main Stage Theme

22

Batman: Return of the Joker

adam@netacc.net

Main Stage Theme

24

Batman: Return of the Joker

adam@netacc.net

Main Stage Theme

26

Batman: Return of the Joker

adam@netacc.net

Main Stage Theme

28

Batman: Return of the Joker

adam@netacc.net

Main Stage Theme

30

Batman: Return of the Joker

adam@netacc.net

Main Stage Theme

32

Batman: Return of the Joker

adam@netacc.net

Main Stage Theme

34

Batman: Return of the Joker

adam@netacc.net

Main Stage Theme

36

Batman: Return of the Joker

adam@netacc.net

Feel free to edit

Main Stage Theme

37

Batman: Return of the Joker

adam@netacc.net

Main Stage Theme

39

Batman: Return of the Joker

adam@netacc.net

Main Stage Theme

41

Batman: Return of the Joker

adam@netacc.net

Feel free to edit

Main Stage Theme

43

Batman: Return of the Joker

adam@netacc.net

Feel free to edit

Main Stage Theme

45

Batman: Return of the Joker

adam@netacc.net

Feel free to edit

Main Stage Theme

47

Batman: Return of the Joker

Feel free to edit

Main Stage Theme

50

Batman: Return of the Joker

Feel free to edit

Main Stage Theme

53

Batman: Return of the Joker

adam@netacc.net

Feel free to edit

Main Stage Theme

56

Batman: Return of the Joker

adam@netacc.net

Main Stage Theme

58

Batman: Return of the Joker

adam@netacc.net

Main Stage Theme

60

Batman: Return of the Joker

adam@netacc.net

Main Stage Theme

62

Batman: Return of the Joker

Musical notation for 'Batman: Return of the Joker' starting at measure 62. The score is written on a single staff with a treble clef and a key signature of one flat (B-flat). The melody consists of eighth notes and quarter notes, with some beamed eighth notes. The piece ends with a double bar line.

adam@netacc.net

Musical notation for 'adam@netacc.net' starting at measure 62. The score is written on a single staff with a bass clef and a key signature of one flat (B-flat). The notation includes chords and single notes, with some notes beamed together. The piece ends with a double bar line.

Feel free to edit

Musical notation for 'Feel free to edit' starting at measure 62. The score is written on a single staff with a bass clef and a key signature of one flat (B-flat). The notation includes a whole rest followed by a sequence of notes: a quarter note, a half note, a quarter note, and a whole note. The piece ends with a double bar line.

Main Stage Theme

Musical notation for 'Main Stage Theme' starting at measure 62. The score is written on a single staff with a bass clef and a key signature of one flat (B-flat). The notation includes a sequence of notes: a quarter note, a half note, a quarter note, a half note, a quarter note, and a whole note. The piece ends with a double bar line.



♩ = 160,000000

6

11

15

19

23

27

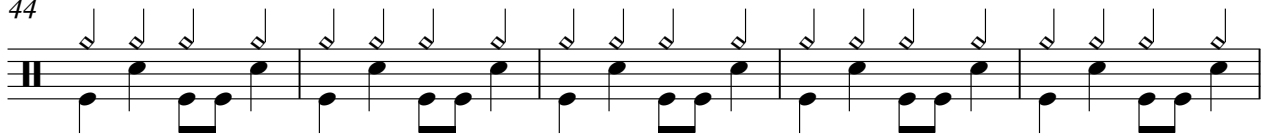
31

35

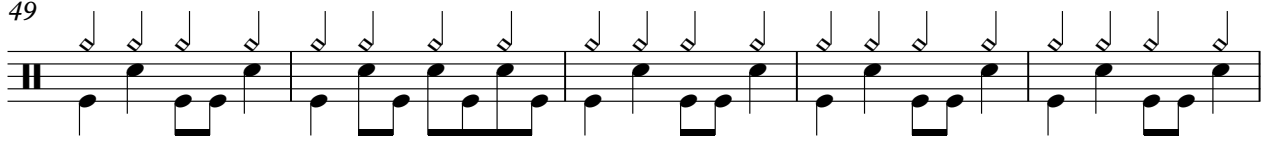
39

V.S.

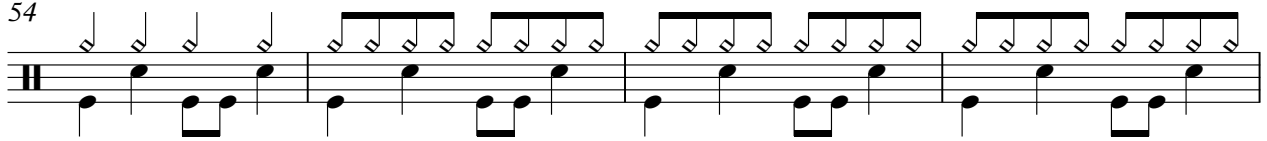
44



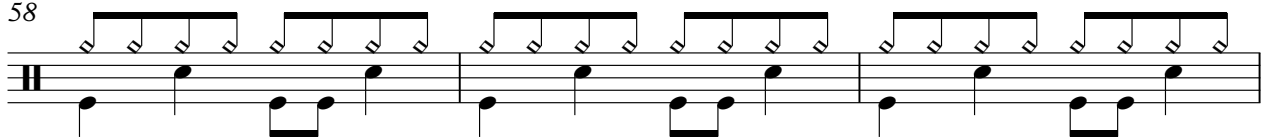
49



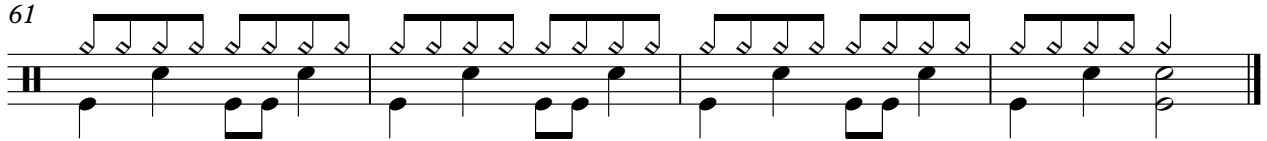
54



58



61



♩ = 160,000000  
**10**

15

21

26

31

36

42

47

**8**

59

Detailed description: This image shows a page of bass guitar tablature for the song 'Batman: Return of the Joker'. The music is written in 4/4 time with a tempo of 160,000000. The key signature has two flats (B-flat and E-flat). The piece is divided into systems of five measures each, with measure numbers 10, 15, 21, 26, 31, 36, 42, 47, and 59 marking the beginning of each system. The notation includes various chords, single notes, and triplets. A double bar line with a repeat sign is used at the start of the 10th measure system. The tablature uses standard notation with stems, flags, and accidentals, and includes fret numbers on the staff lines.

Feel free to edit

# Batman: Return of the Joker - Batman: Return of the Jol

♩ = 160,000000

2

7

11

25

5

42

47

51

54

8

Main Stage Theme

Batman: Return of the Joker - Batman: Return of the Jol

♩ = 160,000000

2

7

11

15

19

24

28

32

36

40

V.S.

Main Stage Theme

44



48



52



56



60

