

Legend Of Zelda 2: The Adventure of Link - Legend Of Z

♩ = 115,000031

Intro

2 Intro

3 Intro

4 Intro

5

Drums

Intro

Bass

Channel 1 & 2

Detailed description: This musical score is for the track 'Legend Of Z' from 'Legend Of Zelda 2: The Adventure of Link'. It consists of five vocal lines, each labeled 'Intro' and numbered 1 through 5. Lines 1, 2, 3, and 4 are written in treble clef with a 4/4 time signature and a key signature of one flat (B-flat). Line 5 is written on a drum staff with a double bar line and a cross symbol. Below the vocal lines are three instrumental parts: 'Drums' (a drum staff), 'Bass' (a bass clef staff), and 'Channel 1 & 2' (a double bass clef staff). The tempo is indicated as ♩ = 115,000031. The score shows a repeating melodic pattern in the vocal lines, with some variations in phrasing. The bass and channel parts provide harmonic support with sustained notes and occasional rhythmic accents.

12

Drums

Intro

Bass

Channel 1 & 2

Title screen from

Detailed description: This block contains the musical notation for measures 12 and 13. The 'Drums' staff shows a pattern of eighth notes in the first measure, followed by a rest and then a sequence of eighth notes in the second measure. The 'Intro' staff has a treble clef and contains a series of eighth notes in the first measure, followed by a rest. The 'Bass' staff has a bass clef and contains a sequence of eighth notes in the first measure, followed by a sequence of eighth notes in the second measure. The 'Channel 1 & 2' staff has a bass clef and contains a sequence of eighth notes in the first measure, followed by a sequence of eighth notes in the second measure. The 'Title screen from' staff has a treble clef and contains a sequence of eighth notes in the first measure, followed by a sequence of eighth notes in the second measure.

14

Drums

Bass

Channel 1 & 2

Title screen from

Detailed description: This block contains the musical notation for measures 14 and 15. The 'Drums' staff shows a pattern of eighth notes in the first measure, followed by a sequence of eighth notes in the second measure. The 'Bass' staff has a bass clef and contains a sequence of eighth notes in the first measure, followed by a sequence of eighth notes in the second measure. The 'Channel 1 & 2' staff has a bass clef and contains a sequence of eighth notes in the first measure, followed by a sequence of eighth notes in the second measure. The 'Title screen from' staff has a treble clef and contains a sequence of eighth notes in the first measure, followed by a sequence of eighth notes in the second measure.

16

Drums

Bass

Melody

Channel 1 & 2

Title screen from

18

Drums

Bass

Melody

Channel 1 & 2

21

Drums

Bass

Melody

Channel 1 & 2

24

Drums

Bass

Melody

Channel 1 & 2

26

Drums

Bass

Melody

Channel 1 & 2

27

Drums

Bass

Melody

Channel 1 & 2

28

Drums

Bass

Melody

Channel 1 & 2

29

Drums

Bass

Melody

Channel 1 & 2

30

Drums

Bass

Melody

Channel 1 & 2

31

Drums

Bass

Melody

Channel 1 & 2

32

Drums

Intro

Bass

Melody

Channel 1 & 2

34

Intro

Bass

Channel 1 & 2

35

Intro

Bass

Channel 1 & 2

39

Intro

Bass

Channel 1 & 2

40

Drums

Intro

Bass

Channel 1 & 2

Title screen from

42

Drums

Bass

Channel 1 & 2

Title screen from

44

Drums

Bass

Melody

Channel 1 & 2

Title screen from

Detailed description: This musical score block covers measures 44 and 45. It features five staves. The Drums staff uses a drum set icon and shows a steady eighth-note pattern. The Bass staff is in bass clef with a 7/8 time signature, featuring a syncopated eighth-note pattern. The Melody staff is in treble clef and shows a melodic line starting in measure 45. The Channel 1 & 2 staff is in bass clef and contains chordal accompaniment. The Title screen from staff is in treble clef and shows a few notes in measure 44.

46

Drums

Bass

Melody

Channel 1 & 2

Detailed description: This musical score block covers measures 46, 47, and 48. It features four staves. The Drums staff continues the eighth-note pattern. The Bass staff continues the syncopated eighth-note pattern. The Melody staff is in treble clef and shows a melodic line across three measures. The Channel 1 & 2 staff is in bass clef and contains chordal accompaniment.

49

Drums

Bass

Melody

Channel 1 & 2

52

Drums

Bass

Melody

Channel 1 & 2

54

Drums

Bass

Melody

Channel 1 & 2

55

Drums

Bass

Melody

Channel 1 & 2

56

Drums

Bass

Melody

Channel 1 & 2

57

Drums

Bass

Melody

Channel 1 & 2

58

Drums

Bass

Melody

Channel 1 & 2

59

Drums

Bass

Melody

Channel 1 & 2

60

Drums

Intro

Bass

Melody

Channel 1 & 2

62

Intro

Bass

Channel 1 & 2

63

Intro

Bass

Channel 1 & 2

67

Intro

Bass

Channel 1 & 2

Detailed description: This block contains the musical notation for measures 67 through 70. The Intro staff is in treble clef and contains a melodic line of eighth notes, with a slur over the first four notes and another slur over the last four notes. The Bass staff is in bass clef and contains a bass line with a long note (half note) and a slur over the next two notes. The Channel 1 & 2 staff is in bass clef and contains a guitar-like line with a long note (half note) and a slur over the next two notes.

68

Intro

Bass

Channel 1 & 2

Detailed description: This block contains the musical notation for measures 71 through 74. The Intro staff is in treble clef and contains a melodic line of eighth notes, with a slur over the first four notes and another slur over the last four notes. The Bass staff is in bass clef and contains a bass line with a long note (half note) and a slur over the next two notes. The Channel 1 & 2 staff is in bass clef and contains a guitar-like line with a long note (half note) and a slur over the next two notes.

Legend Of Zelda 2: The Adventure of Link - Legend Of Z

Drums

♩ = 115,000031

The image displays a drum score for the song 'Legend Of Zelda 2: The Adventure of Link - Legend Of Z'. The score is written on a single staff with a 4/4 time signature. It begins with a tempo marking of ♩ = 115,000031. The notation includes various rhythmic patterns, including quarter notes, eighth notes, and sixteenth notes, often grouped with beams and slurs. There are several measures with rests, some of which are marked with a '4' or a '7' above them, indicating the duration of the rest. Above the staff, there are symbols for a snare drum (a circle with an 'X') and a tom (a circle with a vertical line), indicating the instrument to be played in each measure. The score is divided into measures, with measure numbers 15, 19, 23, 27, 31, 42, 46, 50, and 54 marked at the beginning of their respective lines.

V.S.

2

Drums

58

The musical notation for drums is written on a single staff. It begins with a double bar line on the left. The first three measures each contain a sequence of eight eighth notes, with the first note of each measure being an accented eighth note. The fourth measure contains a whole rest, with a circled 'X' symbol above it. The fifth measure contains a whole rest, with a circled '7' symbol above it. The notation ends with a double bar line on the right.

Legend Of Zelda 2: The Adventure of Link - Legend Of Z

Intro

$\text{♩} = 115,000031$

1

3

5

7

9

11

12

20

39

43

46

50

53

55

57

59

62

66

Melody

♩ = 115,000031

16

16

21

26

30

12

46

51

V.S.

Legend Of Zelda 2: The Adventure of Link - Legend Of Z

Channel 1 & 2

♩ = 115,000031

4

10

15

20

25

27

29

31

34

40

V.S.

45



50



54



56



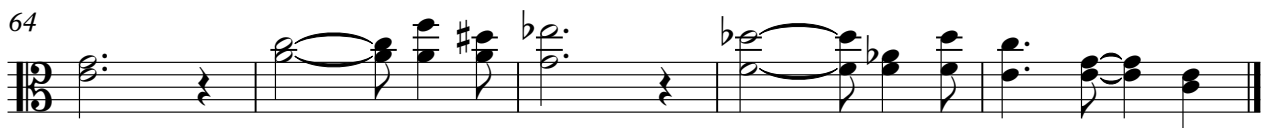
58



60



64

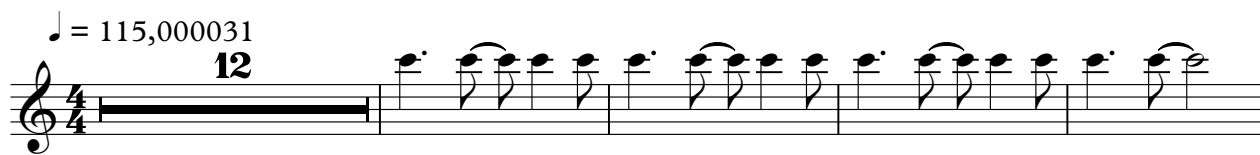


Title screen from

Legend Of Zelda 2: The Adventure of Link - Legend Of Z

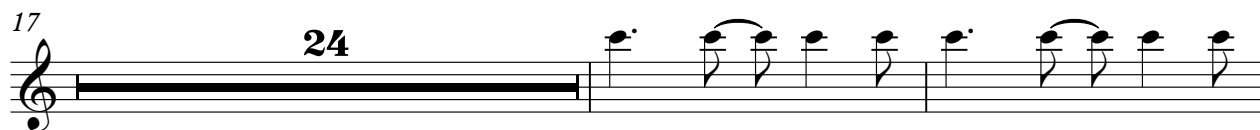
♩ = 115,000031

12



17

24



43

24

