

# Blaster Master - Level V

0.0"  
1.1,00  
Blaster Master for NES - 5th level

♩ = 131,000076

Echo Hi Hat

Bass

Melody

♩ = 131,000076

Detailed description: This system contains the first three staves of music. The top staff is labeled 'Echo Hi Hat' and features a 4/4 time signature with a series of 'x' marks representing hits, followed by a half note. The middle staff is labeled 'Bass' and shows a bass line in G major with a 4/4 time signature, consisting of eighth notes. The bottom staff is labeled 'Melody' and shows a melody in G major with a 4/4 time signature, starting with a half note followed by quarter notes.

3

Echo Hi Hat

Bass

Melody

Detailed description: This system contains the next three staves of music. The 'Echo Hi Hat' staff continues with 'x' marks and a half note. The 'Bass' staff continues with eighth notes. The 'Melody' staff continues with quarter notes.

5

Echo Hi Hat

Bass

Melody

Detailed description: This system contains the final three staves of music. The 'Echo Hi Hat' staff continues with 'x' marks and a half note. The 'Bass' staff continues with eighth notes. The 'Melody' staff continues with quarter notes.

7

Echo Hi Hat

Bass

Melody

9

Echo Hi Hat

Bass

Melody

11

Echo Hi Hat

Bass

Melody

13

Echo Hi Hat

Bass

Melody

15

Echo Hi Hat

Bass

Melody

17

Echo Hi Hat

Bass

Melody

19

Echo Hi Hat

Bass

Melody

21

Echo Hi Hat

Bass

Melody

23

Echo Hi Hat

Bass

Melody

25

Echo Hi Hat

Bass

Melody

27

Echo Hi Hat

Bass

Melody

29

Echo Hi Hat

Bass

Melody

31

Echo Hi Hat

Bass

Melody

33

Echo Hi Hat

Bass

Melody

35

Echo Hi Hat

Bass

Melody

37

Echo Hi Hat

Bass

Melody

39

Echo Hi Hat

Bass

Melody

Detailed description: This system covers measures 39 and 40. The Echo Hi Hat part consists of a steady eighth-note pattern with occasional rests. The Bass part features a rhythmic eighth-note line with a melodic contour. The Melody part is written in treble clef with a key signature of three sharps (F#, C#, G#) and contains a series of eighth and quarter notes.

41

Echo Hi Hat

Bass

Melody

Detailed description: This system covers measures 41 and 42. The Echo Hi Hat part continues with its eighth-note pattern. The Bass part maintains its rhythmic eighth-note line. The Melody part features a long, sustained note in measure 41, followed by a series of eighth notes in measure 42.

43

Echo Hi Hat

Bass

Melody

Detailed description: This system covers measures 43 and 44. The Echo Hi Hat part continues with its eighth-note pattern. The Bass part maintains its rhythmic eighth-note line. The Melody part features a long, sustained note in measure 43, followed by a series of eighth notes in measure 44.

45

Echo Hi Hat

Bass

Melody

Detailed description: This system covers measures 45 and 46. The Echo Hi Hat part continues with its eighth-note pattern. The Bass part features a rhythmic eighth-note line with a melodic contour. The Melody part is written in treble clef with a key signature of three sharps (F#, C#, G#) and contains a series of eighth and quarter notes.

Echo Hi Hat

Musical notation for Echo Hi Hat. It consists of a single staff with a double bar line at the beginning. The notation includes a series of 'x' marks on a horizontal line, representing a rhythmic pattern. The pattern consists of two groups of four 'x' marks, followed by a group of three 'x' marks, and finally a group of two 'x' marks with a circled 'x' underneath. A curved line connects the last two groups of 'x' marks. The staff ends with a double bar line.

Bass

Musical notation for Bass. It consists of a single staff with a bass clef and a key signature of three sharps (F#, C#, G#). The notation includes a series of notes and rests. The notes are mostly eighth notes, with some beamed together. The staff ends with a double bar line.

Melody

Musical notation for Melody. It consists of a single staff with a treble clef and a key signature of three sharps (F#, C#, G#). The notation includes a series of notes and rests. The notes are mostly quarter notes, with some beamed together. The staff ends with a double bar line.

# Blaster Master - Level V

## Echo Hi Hat

♩ = 131,000076



5



9



13



17



21



25



29



33



37



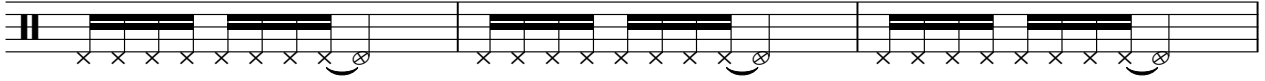
V.S.



2

# Echo Hi Hat

41



44





21



23



25



27



29



31



33



35



37



39



Bass

41



43



45



# Blaster Master - Level V

## Melody

♩ = 131,000076

5

9

13

18

22

26

30

34

39

V.S.

43

