

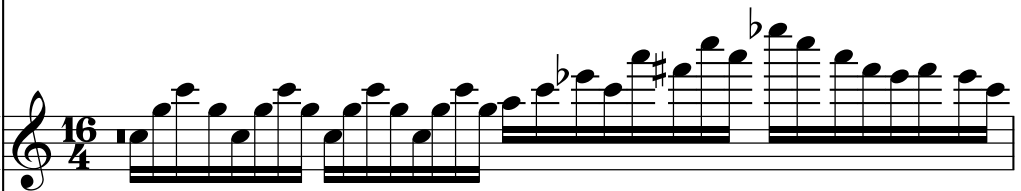
Actraiser - Act I

♩ = 118,000137

Sequence 

Sequence 

Sequence 

Sequence 

Sequence 

♩ = 118,000137

Sequence 

Sequence

Sequence

Sequence

Sequence

Sequence

Sequence



Sequence

Sequence

Sequence

Sequence

Sequence

4

Sequence

Sequence

Sequence

Sequence

Sequence



5

Sequence

Sequence

Sequence

Sequence

Sequence

6

Sequence

Sequence

Sequence

Sequence

Sequence

Sequence



7

Sequence

Sequence

Sequence

Sequence

Sequence

Sequence

8

Sequence

Sequence

Sequence

Sequence

Sequence

Sequence

A double bar line is located to the left of the first staff of the second system.



9

Sequence

Sequence

Sequence

Sequence

Sequence

Sequence

Sequence

Sequence

Sequence

Sequence

Detailed description: This block contains five staves of musical notation for sequence 10. The top staff is a drum set part with a simple rhythmic pattern. The second staff is a bass line in bass clef with a key signature of one flat and a 7/8 time signature. The third, fourth, and fifth staves are in treble clef, featuring complex melodic and harmonic lines with various accidentals and phrasing.



Sequence

Sequence

Sequence

Sequence

Sequence

Detailed description: This block contains five staves of musical notation for sequence 11. The top staff is a drum set part. The second staff is a bass line in bass clef with a key signature of one flat and a 7/8 time signature. The third, fourth, and fifth staves are in treble clef, featuring complex melodic and harmonic lines with various accidentals and phrasing.

12

Sequence

Sequence

Sequence

Sequence

Sequence

Sequence



13

Sequence

Sequence

Sequence

Sequence

Sequence

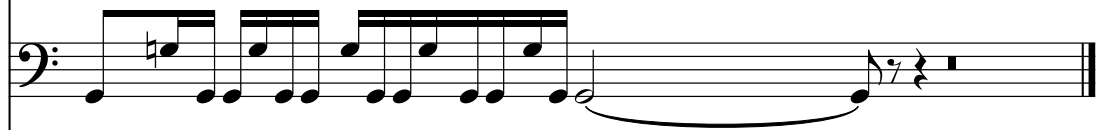
Sequence

Sequence



A musical staff with guitar tablature notation. It begins with a double bar line and a repeat sign. The notation consists of a series of eighth notes on the strings, with some notes beamed together. The staff ends with a double bar line and a repeat sign.

Sequence



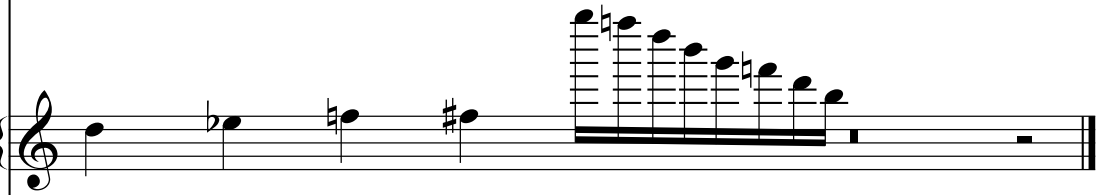
A musical staff with a bass clef. It contains a sequence of eighth notes, followed by a half note, and ends with a quarter rest. The staff is enclosed in a box.

Sequence



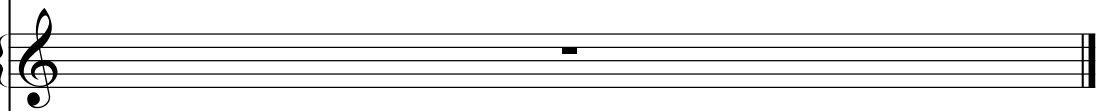
A musical staff with a treble clef. It contains a sequence of eighth notes with various accidentals (sharps, flats, naturals), followed by a series of eighth notes. The staff is enclosed in a box.

Sequence



A musical staff with a treble clef. It contains a sequence of quarter notes with various accidentals, followed by a series of eighth notes. The staff is enclosed in a box.

Sequence



An empty musical staff with a treble clef, enclosed in a box.

Sequence

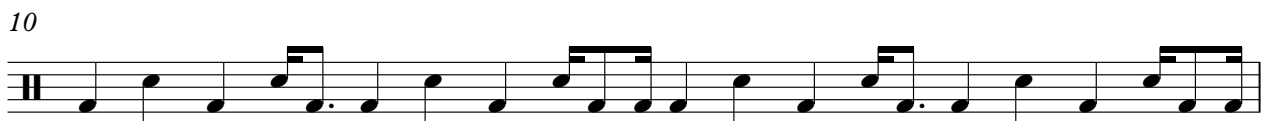
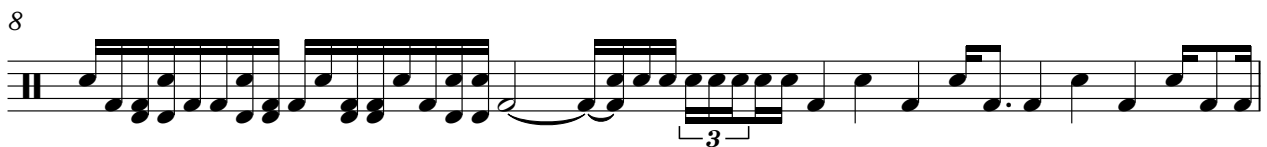
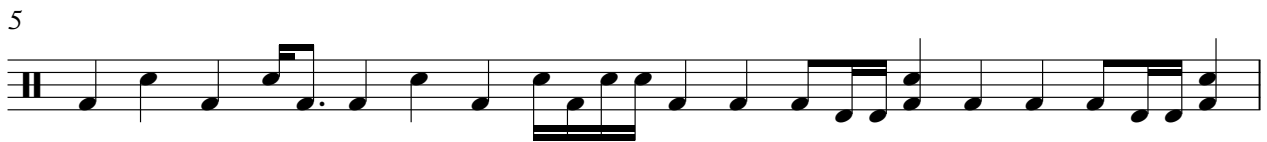
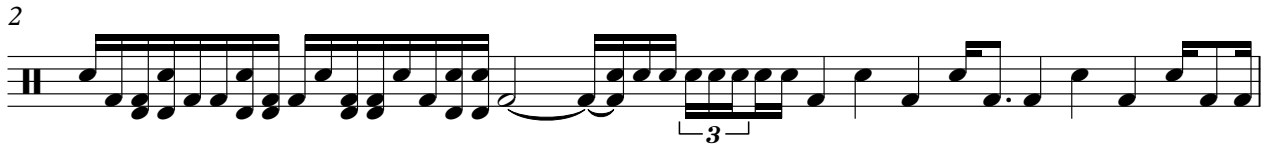


A musical staff with a treble clef. It contains a sequence of eighth notes with various accidentals, followed by a series of eighth notes. The staff is enclosed in a box.

Actraiser - Act I

Sequence

♩ = 118,000137



V.S.

2

Sequence

11



12



13



14



Actraiser - Act I

Sequence

$\text{♩} = 118,000137$

1

2

3

4

5

6

7

8

V.S.

9



10



11



12



13



14



Actraiser - Act I

Sequence

$\text{♩} = 118,000137$

1

2

3

4

5

6

7

8

9

10

V.S.

2

Sequence

11



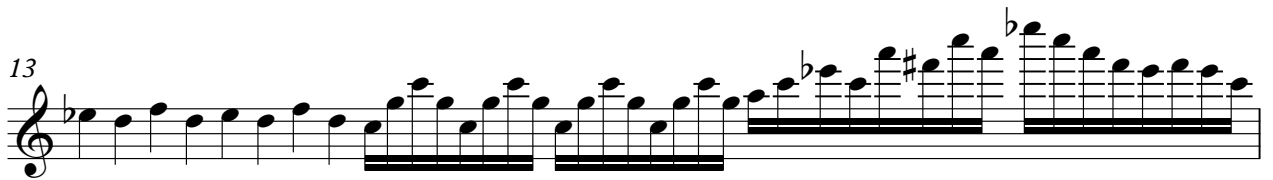
Musical notation for measure 11, featuring a complex sequence of notes and rests, including a double bar line and a fermata.

12



Musical notation for measure 12, showing a sequence of notes on a staff.

13



Musical notation for measure 13, featuring a sequence of notes and rests, including a double bar line and a fermata.

14



Musical notation for measure 14, showing a sequence of notes on a staff.

Actraiser - Act I

Sequence

♩ = 118,000137

16/4

2

3

6

7

8

9

12

13

14