

Castlevania III - Prayer (Opening Scene)

♩ = 100,000000

Timpani

by Konami

from Castlevania III, NES

Alto

Alto

"Prayer"

Organ

♩ = 100,000000



⁴ ♩ = 75,000000

Timpani

by Konami

from Castlevania III, NES

A.

A.

"Prayer"

Org.

♩ = 75,000000

Timpani

Castlevania III - Prayer (Opening Scene)

♩ = 100,000000



4 ♩ = 75,000000



by Konami

Castlevania III - Prayer (Opening Scene)

♪ = 100,000000

♯ = 75,000000

from Castlevania III, NES

Castlevania III - Prayer (Opening Scene)

♩ = 100,000000

♩ = 75,000000

♩ = 75,000000

Alto

Castlevania III - Prayer (Opening Scene)

♩ = 100,000000

The first staff of music is written in 4/4 time. It begins with a treble clef. The key signature has one flat (B-flat). The melody starts with a dotted quarter note on G4, followed by a half note on F4. A slur covers a quarter note on E4 and a quarter note on D4. This is followed by a quarter note on C4, a quarter note on B3, and a quarter note on A3. The staff concludes with a quarter note on G3.

3

♩ = 75,000000

The second staff of music is written in 4/4 time. It begins with a treble clef. The key signature has one flat (B-flat). The melody starts with a dotted quarter note on G4, followed by a half note on F4. A slur covers a quarter note on E4 and a quarter note on D4. This is followed by a quarter note on C4, a quarter note on B3, and a quarter note on A3. The staff concludes with a quarter note on G3.

Alto

Castlevania III - Prayer (Opening Scene)

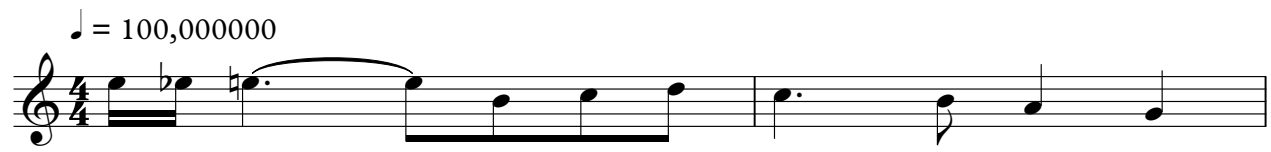
♩ = 100,000000

♩ = 75,000000

4/4

"Prayer"

Castlevania III - Prayer (Opening Scene)



Organ

Castlevania III - Prayer (Opening Scene)

♩ = 100,000000

♩ = 75,000000

The musical notation is written on a single staff with a treble clef and a 4/4 time signature. The key signature has one sharp (F#). The piece consists of 10 measures. The first measure is marked with a tempo of 100,000,000 and contains a quarter rest, followed by an eighth note G4, an eighth note A4, a quarter note B4, and a quarter note C5. The second measure is marked with a tempo of 75,000,000 and contains a quarter note D5, a quarter note E5, a quarter note F#5, and a quarter note G5. The third measure contains a quarter note A5, a quarter note B5, a quarter note C6, and a quarter note D6. The fourth measure contains a quarter note E6, a quarter note F#6, a quarter note G6, and a quarter note A6. The fifth measure contains a quarter note B6, a quarter note C7, a quarter note D7, and a quarter note E7. The sixth measure contains a quarter note F#7, a quarter note G7, a quarter note A7, and a quarter note B7. The seventh measure contains a quarter note C8, a quarter note D8, a quarter note E8, and a quarter note F#8. The eighth measure contains a quarter note G8, a quarter note A8, a quarter note B8, and a quarter note C9. The ninth measure contains a quarter note D9, a quarter note E9, a quarter note F#9, and a quarter note G9. The tenth measure contains a quarter note A9, a quarter note B9, a quarter note C10, and a quarter note D10. The piece ends with a double bar line.