

# Final Fantasy I - Battle Theme (Variation III)

$\text{♩} = 165,000168$

Trumpet

Trombone

Percussion

Bass

Strings

$\text{♩} = 165,000168$

3

Trombone

Percussion

Bass

Strings

5

Trombone

Percussion

Bass

Strings

This system contains measures 5 and 6. The Trombone part features a rhythmic pattern of eighth notes with stems pointing down. The Percussion part consists of a steady eighth-note accompaniment. The Bass part plays a simple eighth-note line. The Strings part provides harmonic support with chords and some melodic movement.

7

Trombone

Percussion

Bass

Strings

This system contains measures 7 and 8. The Trombone part continues its rhythmic pattern. The Percussion part has a change in rhythm starting in measure 8. The Bass part continues its eighth-note line. The Strings part has a melodic line in measure 7 that is tied into measure 8.

9

Trombone

Percussion

Bass

Strings

This system contains measures 9 and 10. The Trombone part continues its rhythmic pattern. The Percussion part continues its eighth-note accompaniment. The Bass part continues its eighth-note line. The Strings part provides harmonic support with chords and some melodic movement.

11

Trumpet

Trombone

Percussion

Bass

Strings

Detailed description: This musical score covers measures 11 and 12. The key signature has one flat (B-flat). The time signature is 4/4. The Trumpet part (treble clef) is silent in measure 11 and plays a melodic line in measure 12. The Trombone part (bass clef) plays a rhythmic accompaniment of eighth notes in measure 11 and a melodic line in measure 12. The Percussion part (drum set) plays a steady eighth-note pattern in measure 11 and a pattern with accents in measure 12. The Bass part (bass clef) plays a rhythmic accompaniment of eighth notes in measure 11 and a melodic line in measure 12. The Strings part (bass clef) is silent in measure 11 and plays a sustained chord in measure 12.

13

Trumpet

Trombone

Percussion

Bass

Strings

Detailed description: This musical score covers measures 13 and 14. The key signature has one flat (B-flat). The time signature is 4/4. The Trumpet part (treble clef) plays a melodic line in measure 13 and continues in measure 14. The Trombone part (bass clef) plays a rhythmic accompaniment of eighth notes in measure 13 and a melodic line in measure 14. The Percussion part (drum set) plays a steady eighth-note pattern in measure 13 and a pattern with accents in measure 14. The Bass part (bass clef) plays a rhythmic accompaniment of eighth notes in measure 13 and a melodic line in measure 14. The Strings part (bass clef) is silent in measure 13 and plays a sustained chord in measure 14.

15

Trumpet

Trombone

Percussion

Bass

Strings

Detailed description: This block contains the musical notation for measures 15 and 16. The score is for five instruments: Trumpet, Trombone, Percussion, Bass, and Strings. The key signature has one flat (B-flat). Measure 15 starts with a treble clef for the Trumpet and a bass clef for the Trombone. The Trumpet part features a complex melodic line with many beamed eighth notes and slurs. The Trombone part has a few notes, including a half note chord. The Percussion part shows a rhythmic pattern with 'x' marks indicating hits. The Bass part has a simple line of notes. The Strings part has a few notes, including a half note chord. Measure 16 continues the patterns from measure 15.

17

Trumpet

Trombone

Percussion

Bass

Strings

Detailed description: This block contains the musical notation for measures 17 and 18. The score is for five instruments: Trumpet, Trombone, Percussion, Bass, and Strings. The key signature has one flat (B-flat). Measure 17 starts with a treble clef for the Trumpet and a bass clef for the Trombone. The Trumpet part features a melodic line with eighth notes and slurs. The Trombone part has a few notes, including a half note chord. The Percussion part shows a rhythmic pattern with 'x' marks indicating hits. The Bass part has a simple line of notes. The Strings part has a few notes, including a half note chord. Measure 18 continues the patterns from measure 17.

19

Trumpet

Trombone

Percussion

Bass

Strings

Detailed description: This system contains measures 19 and 20. The Trumpet part (treble clef) plays a melodic line with eighth notes and rests. The Trombone part (bass clef) provides harmonic support with chords and some melodic fragments. The Percussion part (drum clef) features a steady eighth-note pattern with 'x' marks indicating specific hits. The Bass part (bass clef) follows a similar eighth-note melodic line. The Strings part (bass clef) plays sustained chords, with a key signature change to one flat (B-flat) in measure 20.

21

Trumpet

Trombone

Percussion

Bass

Strings

Detailed description: This system contains measures 21 and 22. The Trumpet part continues its melodic line. The Trombone part has a more active role with some melodic movement. The Percussion part maintains its eighth-note pattern. The Bass part continues with its eighth-note line. The Strings part plays sustained chords, with a key signature change to two flats (B-flat and E-flat) in measure 22.

23

Trumpet

Trombone

Percussion

Bass

Strings

Detailed description: This block contains the musical notation for measures 23 and 24. The score is arranged in five staves. The top staff is for Trumpet (treble clef), the second for Trombone (bass clef), the third for Percussion (percussion clef), the fourth for Bass (bass clef), and the fifth for Strings (bass clef). The key signature has one flat (B-flat). Measure 23 shows the Trumpet playing a melodic line with eighth notes and a sharp sign. The Trombone and Strings play block chords. The Percussion part features a rhythmic pattern of eighth notes with 'x' marks. Measure 24 continues the melodic and harmonic development.

25

Trumpet

Trombone

Percussion

Bass

Strings

Detailed description: This block contains the musical notation for measures 25, 26, and 27. The score is arranged in five staves. The top staff is for Trumpet (treble clef), the second for Trombone (bass clef), the third for Percussion (percussion clef), the fourth for Bass (bass clef), and the fifth for Strings (bass clef). The key signature has one flat (B-flat). Measure 25 shows the Trumpet playing a melodic line with quarter notes. The Trombone and Strings play block chords. The Percussion part features a rhythmic pattern of eighth notes with 'x' marks. Measure 26 shows the Trumpet playing a melodic line with eighth notes and a sharp sign. The Trombone and Strings play block chords. The Percussion part features a rhythmic pattern of eighth notes with 'x' marks. Measure 27 shows the Trumpet playing a melodic line with quarter notes. The Trombone and Strings play block chords. The Percussion part features a rhythmic pattern of eighth notes with 'x' marks.

28

Trumpet

Trombone

Percussion

Bass

Strings

Detailed description: This system of musical notation covers measures 28 and 29. The key signature has two flats (B-flat and E-flat). The time signature is 4/4. The Trumpet part (treble clef) plays a rhythmic pattern of eighth notes in the first measure, followed by a rest in the second. The Trombone part (bass clef) has a whole rest in the first measure and a half note in the second. The Percussion part (drum set) features a snare drum pattern with a cymbal flourish in the first measure. The Bass part (bass clef) plays a rhythmic eighth-note pattern. The Strings part (grand staff) provides harmonic support with chords and moving lines.

30

Trombone

Percussion

Bass

Strings

Detailed description: This system of musical notation covers measures 30 and 31. The key signature remains two flats. The Trombone part (bass clef) plays a rhythmic eighth-note pattern. The Percussion part (drum set) continues with a snare drum pattern. The Bass part (bass clef) plays a rhythmic eighth-note pattern. The Strings part (grand staff) provides harmonic support with chords and moving lines.

32

Trombone

Percussion

Bass

Strings

34

Trombone

Percussion

Bass

Strings

36

Trombone

Percussion

Bass

Strings



38

Trumpet

Trombone

Percussion

Bass

Strings

Detailed description: This musical score covers measures 38 and 39. The key signature has one flat (B-flat). The time signature is 4/4. The Trumpet part (treble clef) features a melodic line with eighth and sixteenth notes, including a triplet in measure 39. The Trombone part (bass clef) provides a rhythmic accompaniment with eighth notes and rests. The Percussion part (drum set) includes a snare drum pattern with 'x' marks for cymbals. The Bass part (bass clef) plays a steady eighth-note accompaniment. The Strings part (bass clef) consists of sustained chords in measures 38 and 39.

40

Trumpet

Trombone

Percussion

Bass

Strings

Detailed description: This musical score covers measures 40 and 41. The key signature has one flat (B-flat). The time signature is 4/4. The Trumpet part (treble clef) continues the melodic line from measure 39, ending with a chordal figure in measure 41. The Trombone part (bass clef) continues its rhythmic accompaniment. The Percussion part (drum set) maintains the snare and cymbal pattern. The Bass part (bass clef) continues the eighth-note accompaniment. The Strings part (bass clef) continues with sustained chords.

42

Trumpet

Trombone

Percussion

Bass

Strings

Detailed description: This system of music covers measures 42 and 43. The Trumpet part (top staff) features a melodic line with eighth and quarter notes, including slurs and accents. The Trombone part (second staff) provides harmonic support with sustained chords and some movement. The Percussion part (third staff) has a consistent rhythmic pattern of eighth notes with 'x' marks. The Bass part (fourth staff) plays a steady eighth-note line. The Strings part (bottom staff) consists of sustained chords with some changes in voicing.

44

Trumpet

Trombone

Percussion

Bass

Strings

Detailed description: This system of music covers measures 44 and 45. The Trumpet part (top staff) continues the melodic line, now including a sharp sign (#) on the second measure of each measure. The Trombone part (second staff) maintains its harmonic role with sustained chords. The Percussion part (third staff) continues its rhythmic pattern. The Bass part (fourth staff) continues its eighth-note line. The Strings part (bottom staff) continues with sustained chords.

46

Trumpet

Trombone

Percussion

Bass

Strings

Detailed description: This system of musical notation covers measures 46 and 47. The Trumpet part is in a treble clef with a key signature of one flat, playing a rhythmic melody of eighth and quarter notes. The Trombone part is in a bass clef, providing harmonic support with chords and some melodic fragments. The Percussion part uses a snare drum (marked with an 'x') and a tom-tom (marked with a circled 'x') to create a steady rhythmic pattern. The Bass part is in a bass clef, mirroring the rhythmic flow of the other instruments. The Strings part is in a bass clef, playing sustained chords and moving lines.

48

Trumpet

Trombone

Percussion

Bass

Strings

Detailed description: This system of musical notation covers measures 48 and 49. The Trumpet part continues its melodic line, now incorporating a sharp sign in the key signature. The Trombone part maintains its harmonic role with chords and melodic motifs. The Percussion part continues its rhythmic accompaniment with snare and tom-tom patterns. The Bass part follows the overall rhythmic structure. The Strings part provides a consistent harmonic and melodic foundation.

50

Trumpet

Trombone

Percussion

Bass

Strings

52

Trumpet

Trombone

Percussion

Bass

Strings

55

Trumpet

Trombone

Percussion

Bass

Strings

Detailed description: This system contains measures 55 and 56. The Trumpet part (treble clef) has a whole rest in measure 55 and a whole rest in measure 56. The Trombone part (bass clef) plays a quarter note G2 in measure 55, followed by a quarter note G#2 in measure 56, with a rhythmic accompaniment of eighth notes. The Percussion part uses a snare drum (marked with an 'x') and plays a steady eighth-note pattern. The Bass part (bass clef) plays a quarter note G2 in measure 55, followed by a quarter note G#2 in measure 56, with a rhythmic accompaniment of eighth notes. The Strings part (bass clef) plays a series of chords, starting with a G2 chord in measure 55 and moving to a G#2 chord in measure 56, with a rhythmic accompaniment of eighth notes.

57

Trombone

Percussion

Bass

Strings

Detailed description: This system contains measures 57 and 58. The Trombone part (bass clef) plays a quarter note G2 in measure 57, followed by a quarter note G#2 in measure 58, with a rhythmic accompaniment of eighth notes. The Percussion part uses a snare drum (marked with an 'x') and plays a steady eighth-note pattern. The Bass part (bass clef) plays a quarter note G2 in measure 57, followed by a quarter note G#2 in measure 58, with a rhythmic accompaniment of eighth notes. The Strings part (bass clef) plays a series of chords, starting with a G2 chord in measure 57 and moving to a G#2 chord in measure 58, with a rhythmic accompaniment of eighth notes.

59

Trombone

Percussion

Bass

Strings

61

Trombone

Percussion

Bass

Strings

63

Trumpet

Trombone

Percussion

Bass

Strings

Detailed description: This system of music covers measures 63 and 64. The key signature has one flat (B-flat). Measure 63 features a rest for the Trumpet, while the Trombone plays a rhythmic pattern of eighth notes with slurs. The Percussion part has a steady eighth-note pattern with 'x' marks. The Bass line consists of eighth notes with slurs. The Strings play a sustained chord with a flat. Measure 64 shows the Trumpet entering with a melodic line, while the Trombone continues its rhythmic pattern. The Percussion and Bass parts continue their respective patterns, and the Strings maintain their chord.

65

Trumpet

Trombone

Percussion

Bass

Strings

Detailed description: This system of music covers measures 65 and 66. The key signature has one flat (B-flat). Measure 65 features the Trumpet playing a melodic line with slurs, while the Trombone continues its rhythmic pattern. The Percussion part has a steady eighth-note pattern with 'x' marks. The Bass line consists of eighth notes with slurs. The Strings play a sustained chord with a sharp. Measure 66 shows the Trumpet continuing its melodic line, while the Trombone continues its rhythmic pattern. The Percussion and Bass parts continue their respective patterns, and the Strings maintain their chord.

67

Trumpet

Trombone

Percussion

Bass

Strings

Detailed description: This system of music covers measures 67 and 68. The key signature has one flat (B-flat). Measure 67: Trumpet plays a melodic line with eighth notes and slurs. Trombone plays a sustained chord. Percussion plays a rhythmic pattern of eighth notes with 'x' marks. Bass plays a simple eighth-note line. Strings play a sustained chord. Measure 68: Trumpet continues with a similar melodic line. Trombone plays a sustained chord. Percussion continues with the eighth-note pattern. Bass continues with the eighth-note line. Strings play a sustained chord.

69

Trumpet

Trombone

Percussion

Bass

Strings

Detailed description: This system of music covers measures 69 and 70. Measure 69: Trumpet plays a melodic line with eighth notes and slurs. Trombone plays a sustained chord. Percussion continues with the eighth-note pattern. Bass continues with the eighth-note line. Strings play a sustained chord. Measure 70: Trumpet continues with a similar melodic line. Trombone plays a sustained chord. Percussion continues with the eighth-note pattern. Bass continues with the eighth-note line. Strings play a sustained chord.



71

Trumpet

Trombone

Percussion

Bass

Strings

Detailed description: This system of musical notation covers measures 71 and 72. The Trumpet part is in treble clef with a key signature of one flat (B-flat). It features a melodic line with eighth and quarter notes, including a sharp sign (F#) in measure 71. The Trombone part is in bass clef, providing harmonic support with chords and some sustained notes. The Percussion part is on a single staff with a double bar line, showing a rhythmic pattern of eighth notes with 'x' marks indicating specific sounds. The Bass part is in bass clef, mirroring the melodic line of the trumpet. The Strings part is in bass clef, playing chords and some sustained notes, with a flat sign (B-flat) in measure 72.

73

Trumpet

Trombone

Percussion

Bass

Strings

Detailed description: This system of musical notation covers measures 73 and 74. The Trumpet part continues its melodic line in treble clef. The Trombone part provides harmonic support in bass clef. The Percussion part maintains its rhythmic pattern on a single staff. The Bass part continues its melodic line in bass clef. The Strings part provides harmonic support in bass clef, with a flat sign (B-flat) in measure 73.

75

Trumpet

Trombone

Percussion

Bass

Strings

Detailed description: This system of music covers measures 75 and 76. The Trumpet part (treble clef) starts with a quarter rest, followed by a quarter note G4 with a sharp sign, then eighth notes A4, B4, and C5. In measure 76, it plays a half note G4 with a sharp sign. The Trombone part (bass clef) plays a half note chord of G2 and B2 in measure 75, and a half note chord of G2 and B2 in measure 76. The Percussion part (percussion clef) has a steady eighth-note pattern of 'x' marks in measure 75, and a similar pattern in measure 76 with a circled 'x' above the first note. The Bass part (bass clef) plays a quarter note G2, followed by eighth notes A2, B2, and C3 in measure 75, and a half note G2 in measure 76. The Strings part (bass clef) plays a half note chord of G2 and B2 in measure 75, and a series of eighth-note chords in measure 76: G2-B2, A2-B2, C3-D3, and E3-F3.

77

Trumpet

Trombone

Percussion

Bass

Strings

Detailed description: This system of music covers measures 77, 78, and 79. The Trumpet part (treble clef) plays a half note G4 in measure 77, followed by a quarter note G4 with a sharp sign in measure 78, and a quarter rest in measure 79. The Trombone part (bass clef) plays a half note chord of G2 and B2 in measure 77, followed by eighth-note chords in measure 78: G2-B2, A2-B2, C3-D3, and E3-F3, and a quarter rest in measure 79. The Percussion part (percussion clef) has a steady eighth-note pattern of 'x' marks in measure 77, a half note chord of G2 and B2 in measure 78, and a steady eighth-note pattern of 'x' marks in measure 79. The Bass part (bass clef) plays a half note G2 in measure 77, followed by eighth-note chords in measure 78: G2-B2, A2-B2, C3-D3, and E3-F3, and a quarter rest in measure 79. The Strings part (bass clef) plays a series of eighth-note chords in measure 77: G2-B2, A2-B2, C3-D3, and E3-F3, followed by a similar pattern in measure 78 and a half note chord of G2 and B2 in measure 79.

80

Trumpet

Trombone

Percussion

Bass

Strings

Detailed description: This system of musical notation covers measures 80 and 81. The Trumpet part (top staff) features a melodic line with eighth-note patterns and rests. The Trombone part (second staff) has a few notes, including a sharp sign. The Percussion part (third staff) uses 'x' marks to indicate hits, with a curved line above the first two measures. The Bass part (fourth staff) plays a rhythmic pattern of eighth notes. The Strings part (bottom staff) provides a harmonic accompaniment with chords and moving lines.

82

Trombone

Percussion

Bass

Strings

Detailed description: This system of musical notation covers measures 82 and 83. The Trombone part (top staff) has a more active melodic line with eighth-note patterns. The Percussion part (second staff) continues with 'x' marks and some note heads. The Bass part (third staff) maintains its rhythmic eighth-note pattern. The Strings part (bottom staff) continues with harmonic support, showing some changes in chord voicings.

84

Trombone

Percussion

Bass

Strings

86

Trombone

Percussion

Bass

Strings

88

Trombone

Percussion

Bass

Strings

90

Trumpet

Trombone

Percussion

Bass

Strings

Detailed description: This system of music covers measures 90 and 91. The Trumpet part (treble clef) features a melodic line with eighth and sixteenth notes, including a triplet in measure 91. The Trombone part (bass clef) provides a rhythmic accompaniment with eighth notes and rests. The Percussion part (drum set) includes a snare drum pattern with 'x' marks for cymbals and a bass drum pattern. The Bass part (bass clef) has a simple eighth-note accompaniment. The Strings part (grand staff) consists of sustained chords in the left hand and rests in the right hand.

92

Trumpet

Trombone

Percussion

Bass

Strings

Detailed description: This system of music covers measures 92 and 93. The Trumpet part (treble clef) continues its melodic line, ending with a triplet of eighth notes in measure 93. The Trombone part (bass clef) continues its rhythmic accompaniment. The Percussion part (drum set) maintains its snare and bass drum patterns. The Bass part (bass clef) continues its eighth-note accompaniment. The Strings part (grand staff) continues with sustained chords in the left hand and rests in the right hand.

94

Trumpet

Trombone

Percussion

Bass

Strings

Detailed description: This system of music covers measures 94 and 95. The Trumpet part (top staff) features a melodic line with eighth and quarter notes, including slurs and accents. The Trombone part (second staff) provides harmonic support with sustained chords and some movement. The Percussion part (third staff) has a consistent rhythmic pattern of eighth notes with 'x' marks. The Bass part (fourth staff) follows a similar rhythmic pattern to the percussion. The Strings part (bottom staff) plays sustained chords, with some changes in voicing and dynamics.

96

Trumpet

Trombone

Percussion

Bass

Strings

Detailed description: This system of music covers measures 96 and 97. The Trumpet part (top staff) continues the melodic line, now including a sharp sign (#) on the second measure. The Trombone part (second staff) maintains its harmonic role with sustained chords. The Percussion part (third staff) continues its rhythmic pattern. The Bass part (fourth staff) continues its rhythmic pattern. The Strings part (bottom staff) continues with sustained chords, showing some voicing changes.

98

Trumpet

Trombone

Percussion

Bass

Strings

Detailed description: This block contains the musical notation for measures 98, 99, and 100. The score is arranged in five staves. The top staff is for Trumpet (treble clef), the second for Trombone (bass clef), the third for Percussion (percussion clef), the fourth for Bass (bass clef), and the fifth for Strings (bass clef). The key signature has one flat (B-flat). Measure 98 shows the Trumpet playing a rhythmic eighth-note pattern, while the Trombone and Strings play sustained chords. Measure 99 continues the rhythmic patterns. Measure 100 features a change in the Trombone and Strings parts, with a flat sign indicating a change in the chord.

100

Trumpet

Trombone

Percussion

Bass

Strings

Detailed description: This block contains the musical notation for measures 100, 101, and 102. The score is arranged in five staves. The top staff is for Trumpet (treble clef), the second for Trombone (bass clef), the third for Percussion (percussion clef), the fourth for Bass (bass clef), and the fifth for Strings (bass clef). The key signature has one flat (B-flat). Measure 100 shows the Trumpet playing a rhythmic eighth-note pattern with a sharp sign indicating a change in the chord. Measure 101 continues the rhythmic patterns. Measure 102 features a change in the Trombone and Strings parts, with a sharp sign indicating a change in the chord.

102

Trumpet

Trombone

Percussion

Bass

Strings

Detailed description: This system of musical notation covers measures 102 and 103. The Trumpet part (treble clef) plays a melodic line starting on G4, moving to A4, B4, and C5 in measure 102, then descending to B4, A4, and G4 in measure 103. The Trombone part (bass clef) provides a harmonic accompaniment with notes G3, A3, B3, and C4 in measure 102, and G3, F3, E3, and D3 in measure 103. The Percussion part (drum set) features a consistent eighth-note pattern with a snare drum on the second and fourth beats of each measure. The Bass part (bass clef) plays a simple bass line with notes G2, A2, B2, and C3 in measure 102, and G2, F2, E2, and D2 in measure 103. The Strings part (grand staff) plays a rhythmic accompaniment of eighth notes, with a melodic line that includes a sharp sign in measure 102 and a flat sign in measure 103.

104

Trumpet

Trombone

Percussion

Bass

Strings

Detailed description: This system of musical notation covers measures 104 and 105. The Trumpet part (treble clef) plays a melodic line starting on G4, moving to A4, B4, and C5 in measure 104, then descending to B4, A4, and G4 in measure 105. The Trombone part (bass clef) provides a harmonic accompaniment with notes G3, A3, B3, and C4 in measure 104, and G3, F3, E3, and D3 in measure 105. The Percussion part (drum set) features a consistent eighth-note pattern with a snare drum on the second and fourth beats of each measure. The Bass part (bass clef) plays a simple bass line with notes G2, A2, B2, and C3 in measure 104, and G2, F2, E2, and D2 in measure 105. The Strings part (grand staff) plays a rhythmic accompaniment of eighth notes, with a melodic line that includes a sharp sign in measure 104 and a flat sign in measure 105.



106

Trumpet

Trombone

Percussion

Bass

Strings

The image shows a musical score for five instruments: Trumpet, Trombone, Percussion, Bass, and Strings. The score is for measures 106, 107, and 108. The key signature is B-flat major (two flats). The time signature is 4/4. The Trumpet part is in the treble clef and plays a rhythmic pattern of eighth notes in the first measure, followed by rests. The Trombone part is in the bass clef and has rests in the first two measures, then plays a quarter note G2, a quarter note F2, and a quarter note E2 in the third measure. The Percussion part is on a single line with a double bar line and a snare drum symbol, playing a pattern of eighth notes with 'x' marks indicating hits. The Bass part is in the bass clef and plays a rhythmic pattern of eighth notes. The Strings part is in a grand staff (treble and bass clefs) and plays a complex rhythmic pattern of eighth notes.

Trumpet

Final Fantasy I - Battle Theme (Variation III)

♩ = 165,000168

6 3 9

12

14

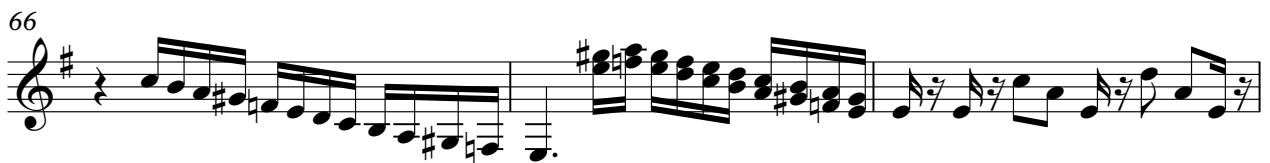
17

20

23

27

8



Trumpet

75



79



90



92



95



98



101



105



Trombone

Final Fantasy I - Battle Theme (Variation III)

♩ = 165,000168



5



8



11



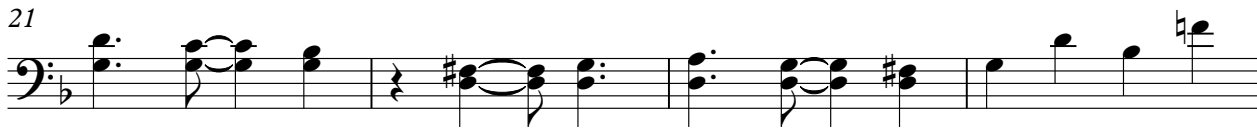
13



16



21



25



2

### Trombone

29

Measures 29-31: The first line of music starts with a quarter rest, followed by a half note B<sup>b</sup> and a half note D<sup>#</sup>. The subsequent measures feature a consistent eighth-note accompaniment pattern consisting of pairs of eighth notes (G<sup>b</sup>, F<sup>b</sup>), (G<sup>b</sup>, F<sup>b</sup>), and (G<sup>b</sup>, F<sup>b</sup>).

32

Measures 32-34: The accompaniment pattern continues with pairs of eighth notes (G<sup>b</sup>, F<sup>b</sup>), (G<sup>b</sup>, F<sup>b</sup>), and (G<sup>b</sup>, F<sup>b</sup>).

35

Measures 35-37: The accompaniment pattern continues with pairs of eighth notes (G<sup>b</sup>, F<sup>b</sup>), (G<sup>b</sup>, F<sup>b</sup>), and (G<sup>b</sup>, F<sup>b</sup>).

38

Measures 38-39: The first measure has a quarter rest, followed by a melodic line of eighth notes: G<sup>b</sup>, A<sup>b</sup>, B<sup>b</sup>, C<sup>b</sup>, D<sup>b</sup>, E<sup>b</sup>, F<sup>b</sup>, G<sup>b</sup>. The second measure contains a quarter rest and two eighth-note chords: (G<sup>b</sup>, F<sup>b</sup>) and (G<sup>b</sup>, F<sup>b</sup>).

40

Measures 40-43: The first measure has a quarter rest, followed by a melodic line of eighth notes: G<sup>b</sup>, A<sup>b</sup>, B<sup>b</sup>, C<sup>b</sup>, D<sup>b</sup>, E<sup>b</sup>, F<sup>b</sup>, G<sup>b</sup>. The second measure has a quarter rest, and the third and fourth measures feature eighth-note chords: (G<sup>b</sup>, F<sup>b</sup>), (G<sup>b</sup>, F<sup>b</sup>), (G<sup>b</sup>, F<sup>b</sup>), and (G<sup>b</sup>, F<sup>b</sup>).

44

Measures 44-48: The first measure has a quarter rest, followed by eighth-note chords: (G<sup>b</sup>, F<sup>b</sup>), (G<sup>b</sup>, F<sup>b</sup>), and (G<sup>b</sup>, F<sup>b</sup>). The second measure has a quarter rest, and the third and fourth measures feature eighth-note chords: (G<sup>b</sup>, F<sup>b</sup>), (G<sup>b</sup>, F<sup>b</sup>), (G<sup>b</sup>, F<sup>b</sup>), and (G<sup>b</sup>, F<sup>b</sup>).

49

Measures 49-53: The first measure has a quarter rest, followed by eighth-note chords: (G<sup>b</sup>, F<sup>b</sup>), (G<sup>b</sup>, F<sup>b</sup>), and (G<sup>b</sup>, F<sup>b</sup>). The second measure has a quarter rest, and the third and fourth measures feature eighth-note chords: (G<sup>b</sup>, F<sup>b</sup>), (G<sup>b</sup>, F<sup>b</sup>), (G<sup>b</sup>, F<sup>b</sup>), and (G<sup>b</sup>, F<sup>b</sup>).

54

Measures 54-57: The first measure has a quarter rest, followed by a half note B<sup>b</sup> and a half note D<sup>#</sup>. The subsequent measures feature a consistent eighth-note accompaniment pattern consisting of pairs of eighth notes (G<sup>b</sup>, F<sup>b</sup>), (G<sup>b</sup>, F<sup>b</sup>), and (G<sup>b</sup>, F<sup>b</sup>).

58

Measures 58-60: The accompaniment pattern continues with pairs of eighth notes (G<sup>b</sup>, F<sup>b</sup>), (G<sup>b</sup>, F<sup>b</sup>), and (G<sup>b</sup>, F<sup>b</sup>).

61

Measures 61-63: The accompaniment pattern continues with pairs of eighth notes (G<sup>b</sup>, F<sup>b</sup>), (G<sup>b</sup>, F<sup>b</sup>), and (G<sup>b</sup>, F<sup>b</sup>).

Trombone

64



66



70



75



80



84



87



90



92



96



V.S.

4

Trombone

101

Musical notation for Trombone, measures 101-104. The notation is in bass clef with a key signature of one flat (B-flat). Measure 101 starts with a double bar line and contains a whole note chord of G2, B1, and D2. Measure 102 contains a quarter note G2, a quarter note A2, a quarter note B2, and a quarter note C3. Measure 103 contains a quarter note D3, a quarter note E3, a quarter note F3, and a quarter note G3. Measure 104 contains a quarter note A3, a quarter note B3, a quarter note C4, and a quarter note D4. The piece ends with a double bar line.

105

Musical notation for Trombone, measures 105-108. The notation is in bass clef with a key signature of one flat (B-flat). Measure 105 contains a quarter note E3, a quarter note F3, and a quarter note G3. Measure 106 contains a quarter rest. Measure 107 contains a quarter note G3, a quarter note A3, and a quarter note B3. Measure 108 contains a quarter note C4, a quarter note D4, and a quarter note E4. The piece ends with a double bar line.



# Final Fantasy I - Battle Theme (Variation III)

## Percussion

♩ = 165,000168

The image displays a percussion score for the 'Final Fantasy I - Battle Theme (Variation III)'. The score is written on ten staves, each representing a measure of music. The time signature is 4/4. The notation includes various rhythmic patterns, such as eighth and sixteenth notes, and rests. The score is marked with measure numbers 6, 10, 14, 18, 22, 26, 30, 34, and 38. The notation is complex, featuring many 'x' marks and other symbols, likely representing specific percussion sounds or techniques. The score is presented in a clean, black-and-white format.

V.S.

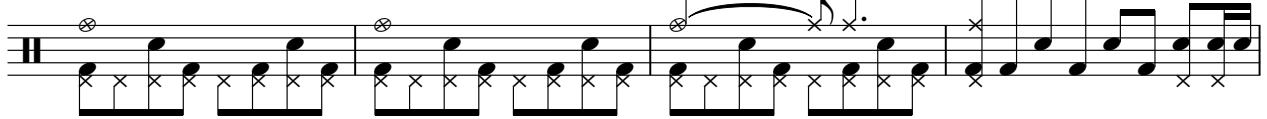
42



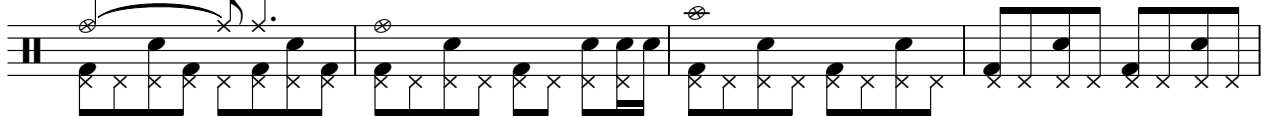
46



50



54



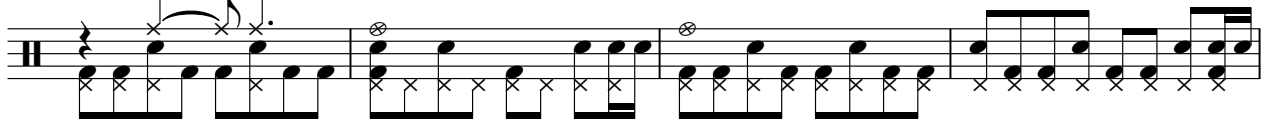
58



62



66



70



74



78



82

Musical notation for measure 82, featuring a treble clef, a key signature of one flat, and a 2/4 time signature. The notation includes a circled 'x' above the staff, a double bar line, and a series of eighth notes with 'x' marks below them, indicating a specific rhythmic pattern.

86

Musical notation for measure 86, featuring a treble clef, a key signature of one flat, and a 2/4 time signature. The notation includes a circled 'x' above the staff, a double bar line, and a series of eighth notes with 'x' marks below them, indicating a specific rhythmic pattern.

90

Musical notation for measure 90, featuring a treble clef, a key signature of one flat, and a 2/4 time signature. The notation includes a circled 'x' above the staff, a double bar line, and a series of eighth notes with 'x' marks below them, indicating a specific rhythmic pattern.

94

Musical notation for measure 94, featuring a treble clef, a key signature of one flat, and a 2/4 time signature. The notation includes a circled 'x' above the staff, a double bar line, and a series of eighth notes with 'x' marks below them, indicating a specific rhythmic pattern.

98

Musical notation for measure 98, featuring a treble clef, a key signature of one flat, and a 2/4 time signature. The notation includes a circled 'x' above the staff, a double bar line, and a series of eighth notes with 'x' marks below them, indicating a specific rhythmic pattern.

102

Musical notation for measure 102, featuring a treble clef, a key signature of one flat, and a 2/4 time signature. The notation includes a circled 'x' above the staff, a double bar line, and a series of eighth notes with 'x' marks below them, indicating a specific rhythmic pattern.

105

Musical notation for measure 105, featuring a treble clef, a key signature of one flat, and a 2/4 time signature. The notation includes a circled 'x' above the staff, a double bar line, and a series of eighth notes with 'x' marks below them, indicating a specific rhythmic pattern.

# Final Fantasy I - Battle Theme (Variation III)

Bass

♩ = 165,000168



V.S.

35



38



42



45



48



52



56



59



62



65



69



72



75



80



83



86



89



92



96



99



V.S.

4

Bass

103

Musical notation for measure 103, bass clef. The notation consists of a five-line staff with a bass clef and a key signature of one flat (B-flat). The measure is divided into three measures. The first measure contains a half note G2. The second measure contains a quarter note F2, followed by four eighth notes: E2, D2, C2, and B1. The third measure contains a quarter note G2, followed by a quarter rest, and a final quarter rest.

106

Musical notation for measure 106, bass clef. The notation consists of a five-line staff with a bass clef and a key signature of one flat (B-flat). The measure is divided into three measures. The first measure contains a quarter note G2, followed by four eighth notes: F2, E2, D2, and C2. The second measure contains a quarter note B1, followed by a quarter rest, and a final quarter rest. The third measure contains a quarter note G2, followed by a quarter rest, and a final quarter rest.

# Final Fantasy I - Battle Theme (Variation III)

Strings

$\text{♩} = 165,000168$

5

9

14

19

24

27

30

34

39

V.S.



Strings

45

50

53

56

60

65

71

76

79

82

86 Strings 3

91

97

102

105