

Final Fantasy III - Awakening

♩ = 130,000137

Horn in F

Harp

Fretless Electric Bass

♩ = 130,000137

Synth Strings

Solo

2

Hn.

Hp.

E. Bass

Syn. Str.

4

Hn.
Hp.
E. Bass
Syn. Str.

This system contains measures 4 and 5. The Horn (Hn.) part has rests in both measures. The Harp (Hp.) part features a rhythmic pattern of eighth notes with a slash through the stem. The Electric Bass (E. Bass) part has a simple line of notes. The Synthesizer String (Syn. Str.) part consists of multiple staves with sustained notes and some melodic movement.

6

Hn.
Hp.
E. Bass
Syn. Str.

This system contains measures 6 and 7. The Horn (Hn.) part has a few notes in measure 6 and a rest in measure 7. The Harp (Hp.) part continues with its rhythmic eighth-note pattern. The Electric Bass (E. Bass) part has a few notes. The Synthesizer String (Syn. Str.) part has sustained notes with some melodic movement.

8

Hp.
E. Bass
Syn. Str.
Solo

This system contains measures 8 and 9. The Harp (Hp.) part has a melodic line. The Electric Bass (E. Bass) part has a line of notes. The Synthesizer String (Syn. Str.) part has sustained notes. The Solo part has a few notes, including a triplet in measure 9.

10

Hp.
E. Bass
Syn. Str.
Solo

Detailed description: This system covers measures 10 and 11. The Harp (Hp.) part features a melodic line of eighth notes. The Electric Bass (E. Bass) part has a simple bass line with a few notes. The Synthesizer Strings (Syn. Str.) part consists of sustained chords with some movement. The Solo part is mostly silent with a few rhythmic markings.

12

Hp.
E. Bass
Syn. Str.
Solo

Detailed description: This system covers measures 12 and 13. The Harp (Hp.) part continues with a melodic line. The Electric Bass (E. Bass) part has a more active bass line with eighth notes. The Synthesizer Strings (Syn. Str.) part has sustained chords. The Solo part has some rhythmic markings.

15

Hp.
E. Bass
Syn. Str.
Solo

Detailed description: This system covers measures 15 and 16. The Harp (Hp.) part has a melodic line. The Electric Bass (E. Bass) part has a bass line with some rests. The Synthesizer Strings (Syn. Str.) part has sustained chords. The Solo part has some rhythmic markings.

18

Hp.

E. Bass

Syn. Str.

Solo

20

Hp.

E. Bass

Syn. Str.

Solo

23

Hn.

Hp.

E. Bass

Syn. Str.

Solo

Detailed description: This system contains measures 23, 24, and 25. The Horn (Hn.) part is mostly silent with rests. The Piano (Hp.) part features a complex rhythmic pattern with many sixteenth notes and slurs. The Electric Bass (E. Bass) part has a steady eighth-note line. The Synthesizer Strings (Syn. Str.) part uses long, sweeping lines with some notes. The Solo part has a few notes and rests.

26

Hn.

Hp.

E. Bass

Syn. Str.

Detailed description: This system contains measures 26, 27, and 28. The Horn (Hn.) part has a melodic line with eighth notes. The Piano (Hp.) part has a consistent eighth-note accompaniment. The Electric Bass (E. Bass) part continues with eighth notes. The Synthesizer Strings (Syn. Str.) part has a long, sustained line with some notes.

28

Hn.

Hp.

E. Bass

Syn. Str.

30

Hn.

Hp.

E. Bass

Syn. Str.

32

Hp.

E. Bass

Syn. Str.

Solo

34

Hp.
E. Bass
Syn. Str.
Solo

Detailed description: This system covers measures 34 and 35. The Harp (Hp.) part features a melodic line of eighth notes. The Electric Bass (E. Bass) part has a simple bass line. The Synthesizer (Syn. Str.) part consists of multiple staves with complex, overlapping patterns. The Solo part has a rhythmic pattern with slurs and accents.

36

Hp.
E. Bass
Syn. Str.
Solo

Detailed description: This system covers measures 36 and 37. The Harp (Hp.) part continues with a melodic line. The Electric Bass (E. Bass) part has a simple bass line. The Synthesizer (Syn. Str.) part features a complex texture with many overlapping notes. The Solo part includes a triplet of eighth notes in measure 37.

38

Hp.
E. Bass
Syn. Str.
Solo

Detailed description: This system covers measures 38 and 39. The Harp (Hp.) part continues with a melodic line. The Electric Bass (E. Bass) part has a simple bass line. The Synthesizer (Syn. Str.) part features a complex texture with many overlapping notes. The Solo part has a rhythmic pattern with slurs and accents.

40

Hp.

E. Bass

Syn. Str.

Solo

42

Hp.

E. Bass

Syn. Str.

Solo

44

Hp.

E. Bass

Syn. Str.

Solo

46

Hn.

Hp.

E. Bass

Syn. Str.

Solo

Horn in F

Final Fantasy III - Awakening

♩ = 130,000137

The first staff of music is in 4/4 time with a key signature of one sharp (F#). It contains six measures. The first measure has a quarter note G4, a quarter rest, and a quarter note A4. The second measure has a quarter note B4, a quarter note C5, and a quarter note D5. The third measure has a quarter note E5, a quarter note F5, and a quarter note G5. The fourth measure has a quarter note A5, a quarter note B5, and a quarter note C6. The fifth measure has a quarter note D6, a quarter note E6, and a quarter note F6. The sixth measure has a quarter note G6, a quarter note A6, and a quarter note B6.

7 **18**

The second staff of music is in 4/4 time with a key signature of one sharp (F#). It contains two measures. The first measure is a whole rest. The second measure has a quarter note G4, a quarter note A4, a quarter note B4, a quarter note C5, a quarter note D5, a quarter note E5, a quarter note F5, a quarter note G5, a quarter note A5, a quarter note B5, a quarter note C6, a quarter note D6, a quarter note E6, a quarter note F6, a quarter note G6, a quarter note A6, and a quarter note B6.

29 **16**

The third staff of music is in 4/4 time with a key signature of one sharp (F#). It contains two measures. The first measure has a quarter note G4, a quarter note A4, a quarter note B4, a quarter note C5, a quarter note D5, a quarter note E5, a quarter note F5, a quarter note G5, a quarter note A5, a quarter note B5, a quarter note C6, a quarter note D6, a quarter note E6, a quarter note F6, a quarter note G6, a quarter note A6, and a quarter note B6. The second measure is a whole rest.

Harp

Final Fantasy III - Awakening

♩ = 130,000137

3

5

7

9

13

17

21

V.S.

25

Measures 25 and 26: Treble clef, 4/4 time. Measure 25 contains two chords with a slash through them, indicating a strummed chord. Measure 26 contains two chords with a slash through them, indicating a strummed chord.

27

Measures 27 and 28: Treble clef, 4/4 time. Measure 27 contains two chords with a slash through them, indicating a strummed chord. Measure 28 contains two chords with a slash through them, indicating a strummed chord.

30

Measures 30 and 31: Treble clef, 4/4 time. Measure 30 contains two chords with a slash through them, indicating a strummed chord. Measure 31 contains two chords with a slash through them, indicating a strummed chord.

32

Measures 32 and 33: Treble clef, 4/4 time. Measure 32 contains two chords with a slash through them, indicating a strummed chord. Measure 33 contains a quarter note followed by a quarter rest, then a quarter note followed by a quarter rest.

35

Measures 35 and 36: Treble clef, 4/4 time. Measure 35 contains a quarter note followed by a quarter rest, then a quarter note followed by a quarter rest. Measure 36 contains a quarter note followed by a quarter rest, then a quarter note followed by a quarter rest.

39

Measures 39-42: Treble clef, 4/4 time. Measure 39 contains a quarter note followed by a quarter rest, then a quarter note followed by a quarter rest. Measure 40 contains a quarter note followed by a quarter rest, then a quarter note followed by a quarter rest. Measure 41 contains a quarter note followed by a quarter rest, then a quarter note followed by a quarter rest. Measure 42 contains a quarter note followed by a quarter rest, then a quarter note followed by a quarter rest.

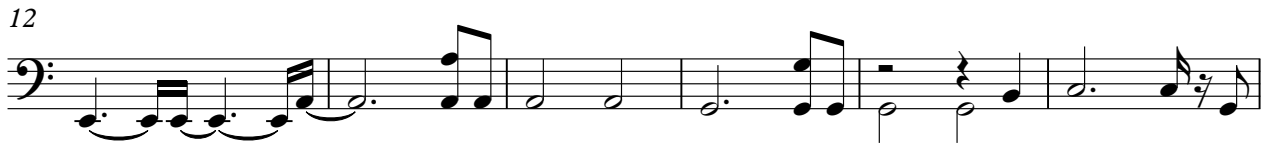
43

Measures 43 and 44: Treble clef, 4/4 time. Measure 43 contains a quarter note followed by a quarter rest, then a quarter note followed by a quarter rest. Measure 44 contains a quarter note followed by a quarter rest, then a quarter note followed by a quarter rest.

46

Measures 46-48: Treble clef, 4/4 time. Measure 46 contains a quarter note followed by a quarter rest, then a quarter note followed by a quarter rest. Measure 47 contains a quarter note followed by a quarter rest, then a quarter note followed by a quarter rest. Measure 48 contains a quarter note followed by a quarter rest, then a quarter note followed by a quarter rest.

♩ = 130,000137



Final Fantasy III - Awakening

Synth Strings

♩ = 130,000137

The image displays a musical score for a synth string instrument, arranged in a 4/4 time signature. The score is presented in a single staff with a treble clef. The tempo is indicated as 130,000137. The music begins with a series of chords and melodic lines, featuring a mix of eighth and sixteenth notes. The score is divided into measures, with measure numbers 6, 11, 16, 20, 25, 30, 35, 39, and 43 clearly marked. The notation includes various musical symbols such as stems, beams, and slurs, indicating the complex rhythmic and melodic structure of the piece.

V.S.

2

46

Synth Strings

The image shows a musical score for a section titled "Synth Strings". It consists of three measures of music. The first measure (measure 46) begins with a treble clef and a key signature of one flat. The melody starts with a quarter note G4, followed by an eighth note F4, and then a quarter note E4. The accompaniment consists of a series of chords: a triad of G4, Bb4, and D5 in the first half, and a triad of G4, Bb4, and D5 in the second half. The second measure (measure 47) features a triplet of eighth notes: G4, F4, and E4. The accompaniment continues with the same chordal structure. The third measure (measure 48) contains a quarter note G4, followed by an eighth note F4, and then a quarter note E4. The accompaniment concludes with the same chordal structure. The score ends with a double bar line.

Final Fantasy III - Awakening

Solo

♩ = 130,000137

7

12

17

22

8

34

39

43

45

Detailed description: This image shows a musical score for a solo piece titled 'Final Fantasy III - Awakening'. The score is written in 4/4 time and consists of eight staves of music. The tempo is marked as ♩ = 130,000137. The key signature is one flat (B-flat major/D minor). The score begins at measure 7 and ends at measure 45. Measure 7 features a whole rest followed by a triplet of eighth notes. Measures 12-17 contain various rhythmic patterns, including eighth and sixteenth notes. Measure 22 has an 8-measure rest. Measures 34-39 feature more complex rhythmic patterns with triplets. The score concludes with a double bar line at measure 45.