

# Mega Man III - Geminiman

♩ = 110,999908

Oboe

Percussion

Acoustic Bass

Solo

3

Perc.

A. Bass

Solo

5

Perc.

A. Bass

Solo

Copyright © 1997 by Arnold Choi

7

Perc.

A. Bass

Solo

3

9

Perc.

A. Bass

Solo

3

11

Ob.

Ob.

Perc.

A. Bass

3

13

Ob.  
Ob.  
Perc.  
A. Bass

This system contains measures 13 and 14. The first two staves are for Oboe (Ob.), the third for Percussion (Perc.), and the fourth for A. Bass. The key signature has two flats (B-flat and E-flat). Measure 13 starts with a treble clef and a 3/4 time signature. The first Ob. staff has a quarter rest followed by a quarter note G4, an eighth note A4, and a quarter note B4. The second Ob. staff has a half note G3, a quarter rest, and a quarter note G4. Measure 14 has a whole note G3 in the first Ob. staff and a whole note G3 in the second Ob. staff. The Perc. staff has a continuous eighth-note pattern. The A. Bass staff has a complex rhythmic pattern with many slurs and accents.

15

Ob.  
Ob.  
Perc.  
A. Bass

This system contains measures 15 and 16. The first two staves are for Oboe (Ob.), the third for Percussion (Perc.), and the fourth for A. Bass. The key signature has two flats. Measure 15 has a whole note G3 in the first Ob. staff and a whole note G3 in the second Ob. staff. Measure 16 has a whole note G3 in the first Ob. staff and a half note G3 followed by a quarter note G4 in the second Ob. staff. The Perc. staff continues with the eighth-note pattern. The A. Bass staff continues with the complex rhythmic pattern.

17

Ob.  
Ob.  
Perc.  
A. Bass

This system contains measures 17 and 18. The first two staves are for Oboe (Ob.), the third for Percussion (Perc.), and the fourth for A. Bass. The key signature has two flats. Measure 17 starts with a treble clef and a 3/4 time signature. The first Ob. staff has a quarter rest followed by a quarter note G4, an eighth note A4, and a quarter note B4. The second Ob. staff has a half note G3, a quarter rest, and a quarter note G4. Measure 18 has a whole note G3 in the first Ob. staff and a whole note G3 in the second Ob. staff. The Perc. staff continues with the eighth-note pattern. The A. Bass staff continues with the complex rhythmic pattern.

19

Ob.  
Ob.  
Perc.  
A. Bass

This system covers measures 19 and 20. The first two staves are for Oboe (Ob.), with the top staff in treble clef and the bottom staff in bass clef. The Percussion (Perc.) staff is in the middle, and the A. Bass staff is at the bottom. The key signature has two flats (B-flat and E-flat). In measure 19, the top Ob. staff has a half note G4, and the bottom Ob. staff has a half note G3. In measure 20, the top Ob. staff has a half note G4 with a fermata, and the bottom Ob. staff has a half note G3 with a fermata. The Perc. staff has a continuous eighth-note pattern. The A. Bass staff has a complex rhythmic pattern with many sixteenth notes.

21

Ob.  
Ob.  
Perc.  
A. Bass

This system covers measures 21 and 22. The first two staves are for Oboe (Ob.), with the top staff in treble clef and the bottom staff in bass clef. The Perc. staff is in the middle, and the A. Bass staff is at the bottom. The key signature has two flats. In measure 21, the top Ob. staff has a half note G4 with a fermata, and the bottom Ob. staff has a half note G3 with a fermata. In measure 22, the top Ob. staff has a half note G4 with a fermata, and the bottom Ob. staff has a half note G3 with a fermata. The Perc. staff has a continuous eighth-note pattern. The A. Bass staff has a complex rhythmic pattern with many sixteenth notes.

23

Ob.  
Ob.  
Perc.  
A. Bass

This system covers measures 23 and 24. The first two staves are for Oboe (Ob.), with the top staff in treble clef and the bottom staff in bass clef. The Perc. staff is in the middle, and the A. Bass staff is at the bottom. The key signature has two flats. In measure 23, the top Ob. staff has a half note G4 with a fermata, and the bottom Ob. staff has a half note G3 with a fermata. In measure 24, the top Ob. staff has a half note G4 with a fermata, and the bottom Ob. staff has a half note G3 with a fermata. The Perc. staff has a continuous eighth-note pattern. The A. Bass staff has a complex rhythmic pattern with many sixteenth notes.

25

Ob.  
Ob.  
Perc.  
A. Bass  
Solo

Detailed description: This system contains measures 25 and 26. The top two staves are for Oboe (Ob.), the middle for Percussion (Perc.), the next for Alto Bass (A. Bass), and the bottom for Solo. Measure 25 features a complex rhythmic pattern with eighth notes and triplets in the Oboe and Solo parts. Measure 26 continues this pattern with a triplet in the Solo part.

27

Ob.  
Perc.  
A. Bass  
Solo

Detailed description: This system contains measures 27 and 28. The Oboe (Ob.) part in measure 27 consists of four quarter notes with different accidentals. The Percussion (Perc.), Alto Bass (A. Bass), and Solo parts continue with their respective rhythmic patterns from the previous system.

29


Perc.  
A. Bass  
Solo

Detailed description: This system contains measures 29 and 30. The Percussion (Perc.) and Alto Bass (A. Bass) parts continue with their rhythmic patterns. The Solo part in measure 29 features a triplet of eighth notes.

31

Perc. 

A. Bass 

Solo 

33

Perc. 

A. Bass 

Solo 

35

Perc. 

A. Bass 

Solo 

37

Ob. 

Ob. 

Perc. 

A. Bass 

39

Ob.

Ob.

Perc.

A. Bass

Detailed description: This system covers measures 39 and 40. The top two staves are for Oboe (Ob.). The first staff has a treble clef and a key signature of two flats. It begins with a quarter rest, followed by eighth notes G4, A4, Bb4, and C5. The second staff has a treble clef and a key signature of two flats. It starts with a half note G4, followed by a quarter note A4, and then a triplet of eighth notes Bb4, C5, and Bb4. The Percussion (Perc.) staff has a double bar line and a snare drum icon, with a rhythmic pattern of eighth notes. The A. Bass staff has a bass clef and a key signature of two flats, featuring a complex rhythmic pattern of eighth notes with many accidentals.

41

Ob.

Ob.

Perc.

A. Bass

Detailed description: This system covers measures 41 and 42. The top two staves are for Oboe (Ob.). The first staff has a treble clef and a key signature of two flats, with a half note G4 in measure 41 and a half note A4 in measure 42. The second staff has a treble clef and a key signature of two flats, with a half note G4 in measure 41 and a half note A4 in measure 42, followed by a quarter note Bb4 and an eighth note C5. The Percussion (Perc.) staff has a double bar line and a snare drum icon, with a rhythmic pattern of eighth notes. The A. Bass staff has a bass clef and a key signature of two flats, featuring a complex rhythmic pattern of eighth notes with many accidentals.

43

Ob.

Ob.

Perc.

A. Bass

Detailed description: This system covers measures 43 and 44. The top two staves are for Oboe (Ob.). The first staff has a treble clef and a key signature of two flats. It begins with a quarter rest, followed by eighth notes G4, A4, Bb4, and C5. The second staff has a treble clef and a key signature of two flats. It starts with a half note G4, followed by a quarter note A4, and then a triplet of eighth notes Bb4, C5, and Bb4. The Percussion (Perc.) staff has a double bar line and a snare drum icon, with a rhythmic pattern of eighth notes. The A. Bass staff has a bass clef and a key signature of two flats, featuring a complex rhythmic pattern of eighth notes with many accidentals.

45

Ob.  
Ob.  
Perc.  
A. Bass

Detailed description: This system covers measures 45 and 46. The first two staves are for Oboe (Ob.), with the top staff in treble clef and the bottom staff in bass clef. The top staff has a long slur over measures 45 and 46. The Percussion (Perc.) staff shows a consistent rhythmic pattern of eighth notes. The A. Bass staff features a complex rhythmic pattern with many sixteenth notes and rests.

47

Ob.  
Ob.  
Perc.  
A. Bass

Detailed description: This system covers measures 47 and 48. The top staff (Ob.) has a long slur over measures 47 and 48. The middle staff (Ob.) has a melodic line with some rests. The Perc. and A. Bass staves continue their respective rhythmic patterns from the previous system.

49

Ob.  
Ob.  
Perc.  
A. Bass

Detailed description: This system covers measures 49 and 50. The top staff (Ob.) has a long slur over measures 49 and 50. The middle staff (Ob.) has a melodic line. The Perc. and A. Bass staves continue their rhythmic patterns.



51

Ob.  
Ob.  
Perc.  
A. Bass  
Solo

Detailed description: This system contains measures 51 and 52. The first two staves are for Oboe (Ob.), the third for Percussion (Perc.), the fourth for Acoustic Bass (A. Bass), and the fifth for Solo. The key signature has two flats (B-flat and E-flat), and the time signature is 4/4. In measure 51, the top Oboe staff has a quarter note G4, followed by eighth notes A4, B-flat4, and C5, then a triplet of eighth notes D5, E5, and F5. The second Oboe staff has a whole rest. The Percussion staff has a steady eighth-note pattern. The A. Bass staff has a complex eighth-note pattern. The Solo staff has a whole rest. Measure 52 continues the patterns, with the top Oboe staff having a triplet of eighth notes G5, A5, and B5.

53

Ob.  
Perc.  
A. Bass  
Solo

Detailed description: This system contains measures 53 and 54. The first staff is for Oboe (Ob.), the second for Percussion (Perc.), the third for Acoustic Bass (A. Bass), and the fourth for Solo. In measure 53, the Oboe staff has a whole note G4. The Percussion staff continues its eighth-note pattern. The A. Bass staff continues its eighth-note pattern. The Solo staff has a quarter note G4. Measure 54 continues the patterns, with the Oboe staff having a whole note B-flat4, and the Solo staff having a quarter note A4.

55

Perc.  
A. Bass  
Solo

Detailed description: This system contains measures 55 and 56. The first staff is for Percussion (Perc.), the second for Acoustic Bass (A. Bass), and the third for Solo. In measure 55, the Percussion staff continues its eighth-note pattern. The A. Bass staff continues its eighth-note pattern. The Solo staff has a quarter note G4. Measure 56 continues the patterns, with the Solo staff having a quarter note A4.

Perc.

A single staff of music for percussion. It begins with a double bar line and a key signature of one flat. The notation consists of a series of eighth notes with stems pointing down, grouped in pairs with beams. The first pair is beamed together, followed by a pair with a slur above them, then another pair with a slur above them, and finally a pair with a slur above them. The staff ends with a double bar line.

A. Bass

A single staff of music for bass. It begins with a double bar line and a key signature of one flat. The notation consists of eighth notes with stems pointing up, grouped in pairs with beams. The first pair is beamed together, followed by a pair with a slur above them, then another pair with a slur above them, and finally a pair with a slur above them. The staff ends with a double bar line.

Solo

A single staff of music for solo. It begins with a double bar line and a key signature of one flat. The notation consists of eighth notes with stems pointing up, grouped in pairs with beams. The first pair is beamed together, followed by a pair with a slur above them, then another pair with a slur above them, and finally a pair with a slur above them. A triplet of eighth notes is indicated by a '3' below the staff. The staff ends with a double bar line.

Oboe

Mega Man III - Geminiman

♩ = 110,999908

**10**

16

23

26

**10**

39

45

51

**6**

Copyright © 1997 by Arnold Choi

# Mega Man III - Geminiman

Oboe

$\text{♩} = 110,999908$

8

13

18

23

27

39

44

49

52

4

Copyright © 1997 by Arnold Choi

# Mega Man III - Geminiman

## Percussion

♩ = 110,999908



4



7



10



13



16



19



22



25



28



31



34



37



40



43



46



49



52



55



57



# Mega Man III - Geminiman

Acoustic Bass

♩ = 110,999908



Copyright © 1997 by Arnold Choi

V.S.

22

24

26

28

30

32

34

37

39

41

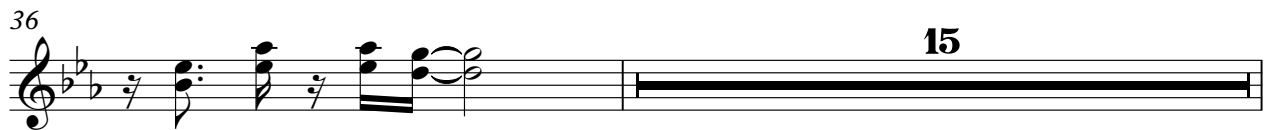




# Mega Man III - Geminiman

Solo

♩ = 110,999908



Copyright © 1997 by Arnold Choi

2

Solo

52



54



56

