

# Mega Man III - Magnetman

♩ = 135,000137

Percussion

Bass

Melody

Harmony

3

Percussion

Bass

Melody

Harmony

5

Percussion

Bass

Melody

Harmony

7

Percussion

Bass

Melody

Harmony

9

Percussion

Bass

Melody

Harmony

11

Percussion

Bass

Melody

Harmony

13

Percussion

Bass

Melody

Harmony

15

Percussion

Bass

Melody

Harmony

17

Percussion

Bass

Melody

Harmony

Percussion

Bass

Melody

Harmony

Percussion

Bass

Melody

Harmony

Percussion

Bass

Melody

Harmony

25

Percussion

Bass

Melody

Harmony

27

Percussion

Bass

Melody

Harmony

29

Percussion

Bass

Melody

Harmony

31

Percussion

Bass

Melody

Harmony

33

Percussion

Bass

Melody

Harmony

35

Percussion

Bass

Melody

Harmony

37

Percussion

Bass

Melody

Harmony

Detailed description: This system contains measures 37 and 38. The Percussion part consists of quarter notes on a single line. The Bass part features eighth notes with slurs, including some beamed eighth notes. The Melody part has quarter notes with slurs and some accidentals (sharps and flats). The Harmony part consists of eighth notes with slurs, often beamed in pairs.

39

Percussion

Bass

Melody

Harmony

Detailed description: This system contains measures 39 and 40. The Percussion part consists of quarter notes on a single line. The Bass part features eighth notes with slurs, including some beamed eighth notes. The Melody part has quarter notes with slurs and some accidentals. The Harmony part consists of eighth notes with slurs, often beamed in pairs.

41

Percussion

Bass

Melody

Harmony

Detailed description: This system contains measures 41 and 42. The Percussion part features eighth notes with slurs, often beamed in pairs. The Bass part features eighth notes with slurs, including some beamed eighth notes. The Melody part has quarter notes with slurs and some accidentals. The Harmony part consists of eighth notes with slurs, often beamed in pairs.

43

Percussion

Bass

Melody

Harmony

45

Percussion

Bass

Melody

Harmony

47

Percussion

Bass

Melody

Harmony



49

Percussion

Bass

Melody

Harmony

Detailed description of measures 49-50: The score consists of four staves. The Percussion staff uses a snare drum and features a steady eighth-note pattern. The Bass staff is in bass clef and plays eighth notes with rests. The Melody staff is in treble clef and features a melodic line with eighth and quarter notes. The Harmony staff is in treble clef and provides accompaniment with chords and eighth notes.

51

Percussion

Bass

Melody

Harmony

Detailed description of measures 51-52: The score consists of four staves. The Percussion staff uses a snare drum and features a steady eighth-note pattern. The Bass staff is in bass clef and plays eighth notes with rests. The Melody staff is in treble clef and features a melodic line with quarter notes. The Harmony staff is in treble clef and provides accompaniment with chords and eighth notes.

Percussion

Mega Man III - Magnetman

♩ = 135,000137



V.S.

2

Percussion

37



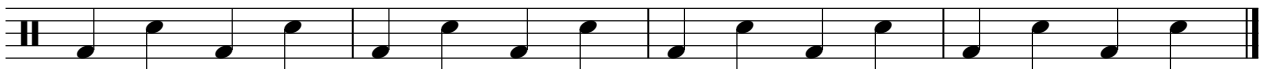
42



45



48



# Mega Man III - Magnetman

Bass

$\text{♩} = 135,000137$

4

7

9

11

13

16

19

22

24

V.S.

Bass

26

Two musical staves in bass clef. The first staff contains measures 26 and 27. Measure 26 has a key signature of one sharp (F#) and a common time signature. It features a rhythmic pattern of eighth notes with stems pointing up, followed by a quarter rest. Measure 27 continues this pattern. The notation includes various accidentals (sharps and naturals) and stems.

28

Two musical staves in bass clef. The first staff contains measures 28 and 29. Measure 28 has a key signature of one sharp (F#) and a common time signature. It features a rhythmic pattern of eighth notes with stems pointing up, followed by a quarter rest. Measure 29 continues this pattern. The notation includes various accidentals (sharps and naturals) and stems.

30

Two musical staves in bass clef. The first staff contains measures 30 and 31. Measure 30 has a key signature of one flat (Bb) and a common time signature. It features a rhythmic pattern of eighth notes with stems pointing up, followed by a quarter rest. Measure 31 continues this pattern. The notation includes various accidentals (flats, sharps, and naturals) and stems.

32

Two musical staves in bass clef. The first staff contains measures 32 and 33. Measure 32 has a key signature of one sharp (F#) and a common time signature. It features a rhythmic pattern of eighth notes with stems pointing up, followed by a quarter rest. Measure 33 continues this pattern. The second staff contains measure 34, which has a key signature of one sharp (F#) and a common time signature. It features a rhythmic pattern of eighth notes with stems pointing up, followed by a quarter rest. The notation includes various accidentals (sharps, flats, and naturals) and stems.

35

Two musical staves in bass clef. The first staff contains measures 35 and 36. Measure 35 has a key signature of one flat (Bb) and a common time signature. It features a rhythmic pattern of eighth notes with stems pointing up, followed by a quarter rest. Measure 36 continues this pattern. The second staff contains measure 37, which has a key signature of one sharp (F#) and a common time signature. It features a rhythmic pattern of eighth notes with stems pointing up, followed by a quarter rest. The notation includes various accidentals (flats, sharps, and naturals) and stems.

38

Two musical staves in bass clef. The first staff contains measures 38 and 39. Measure 38 has a key signature of one flat (Bb) and a common time signature. It features a rhythmic pattern of eighth notes with stems pointing up, followed by a quarter rest. Measure 39 continues this pattern. The second staff contains measure 40, which has a key signature of one sharp (F#) and a common time signature. It features a rhythmic pattern of eighth notes with stems pointing up, followed by a quarter rest. The notation includes various accidentals (flats, sharps, and naturals) and stems.

41

Two musical staves in bass clef. The first staff contains measures 41 and 42. Measure 41 has a key signature of one sharp (F#) and a common time signature. It features a rhythmic pattern of eighth notes with stems pointing up, followed by a quarter rest. Measure 42 continues this pattern. The notation includes various accidentals (sharps and naturals) and stems.

43

Two musical staves in bass clef. The first staff contains measures 43 and 44. Measure 43 has a key signature of one sharp (F#) and a common time signature. It features a rhythmic pattern of eighth notes with stems pointing up, followed by a quarter rest. Measure 44 continues this pattern. The notation includes various accidentals (sharps and naturals) and stems.

45

Two musical staves in bass clef. The first staff contains measures 45 and 46. Measure 45 has a key signature of one sharp (F#) and a common time signature. It features a rhythmic pattern of eighth notes with stems pointing up, followed by a quarter rest. Measure 46 continues this pattern. The notation includes various accidentals (sharps and naturals) and stems.

47

Two musical staves in bass clef. The first staff contains measures 47 and 48. Measure 47 has a key signature of one sharp (F#) and a common time signature. It features a rhythmic pattern of eighth notes with stems pointing up, followed by a quarter rest. Measure 48 continues this pattern. The notation includes various accidentals (sharps and naturals) and stems.

49 Bass 3

49 Bass 3

51

51

# Mega Man III - Magnetman

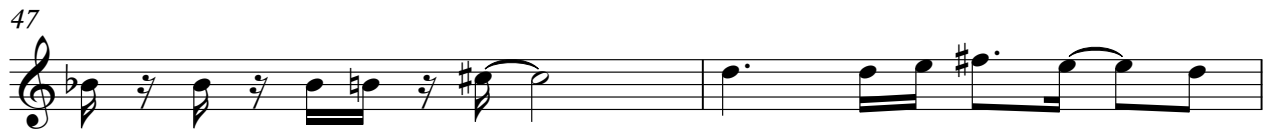
## Melody

♩ = 135,000137



V.S.

## Melody





# Mega Man III - Magnetman

## Harmony

♩ = 135,000137



4



7



11



14



16



18



20



22



24



V.S.

