

Mega Man VI - Centaurman

♩ = 132,000137

High Hat

Crash

Guitar

Bass

Brass

Echoes



3

High Hat

Crash

Bass

Brass

Echoes

5

High Hat

Crash

Bass

Brass

Echoes

Detailed description: This musical score covers measures 5, 6, and 7. The High Hat part consists of a continuous eighth-note pattern. The Crash part features three measures of chords, each marked with an asterisk and a slur. The Bass part is in a bass clef with a key signature of one flat, playing a melodic line with eighth notes and a half note. The Brass and Echoes parts are in a treble clef with a key signature of one flat, playing a similar melodic line with eighth notes and a half note.



8

High Hat

Crash

Guitar

Bass

Piano

Brass

Echoes

Echoes

Detailed description: This musical score covers measures 8, 9, and 10. The High Hat and Crash parts are identical to the previous section. The Guitar part is in a treble clef with a key signature of one flat, playing a melodic line with eighth notes and a half note. The Bass part is in a bass clef with a key signature of one flat, playing a melodic line with eighth notes and a half note. The Piano part is in a treble clef with a key signature of one flat, playing a melodic line with eighth notes and a half note. The Brass and Echoes parts are in a treble clef with a key signature of one flat, playing a melodic line with eighth notes and a half note.

10

High Hat
Crash
Guitar
Bass
Piano
Echoes

Detailed description: This musical score block covers measures 10 and 11. It features six staves: High Hat, Crash, Guitar, Bass, Piano, and Echoes. The High Hat and Crash parts are in the top two staves, with the High Hat showing a continuous pattern of 'x' marks and the Crash showing specific crash symbols. The Guitar, Bass, Piano, and Echoes parts are in the bottom four staves, all using treble clefs. The key signature has one sharp (F#) and the time signature is 4/4. The music is in a rock style with a driving bass line and a melodic guitar line.



12

High Hat
Crash
Guitar
Bass
Piano
Echoes

Detailed description: This musical score block covers measures 12 and 13. It features six staves: High Hat, Crash, Guitar, Bass, Piano, and Echoes. The High Hat and Crash parts are in the top two staves, with the High Hat showing a continuous pattern of 'x' marks and the Crash showing specific crash symbols. The Guitar, Bass, Piano, and Echoes parts are in the bottom four staves, all using treble clefs. The key signature has one sharp (F#) and the time signature is 4/4. The music continues with a driving bass line and a melodic guitar line.

14

High Hat

Crash

Guitar

Bass

Piano

Echoes

Detailed description: This musical score covers measures 14 and 15. The High Hat part consists of a steady eighth-note pattern. The Crash cymbal has two main hits per measure, one on the first and third eighth notes, and another on the fifth and seventh eighth notes. The Guitar part features a melodic line with a mix of eighth and quarter notes, including some accidentals. The Bass part provides a simple harmonic accompaniment with quarter notes. The Piano and Echoes parts play a similar melodic line to the guitar, with some chords and accidentals.



16

High Hat

Crash

Guitar

Bass

Piano

Echoes

Detailed description: This musical score covers measures 16 and 17. The High Hat part continues with the same eighth-note pattern. The Crash cymbal has two main hits per measure, one on the first and third eighth notes, and another on the fifth and seventh eighth notes. The Guitar part features a melodic line with a mix of eighth and quarter notes, including some accidentals. The Bass part provides a simple harmonic accompaniment with quarter notes. The Piano part has a long sustained chord in the second measure. The Echoes part plays a similar melodic line to the guitar, with some chords and accidentals.

18

High Hat

Crash

Guitar

Bass

Piano

Brass

Echoes

Echoes

Detailed description: This section of the score covers measures 18, 19, and 20. The High Hat part consists of a continuous eighth-note pattern. The Crash part features three measures of chords, each marked with an asterisk and a slur. The Guitar part has a melodic line in the first measure, followed by rests. The Bass part plays a rhythmic pattern of eighth notes with rests. The Piano, Brass, and Echoes parts have complex harmonic lines with various accidentals and slurs.



21

High Hat

Crash

Bass

Piano

Brass

Echoes

Echoes

Detailed description: This section of the score covers measures 21, 22, and 23. The High Hat part continues with the eighth-note pattern. The Crash part has three measures of chords, marked with asterisks and slurs. The Bass part continues with its rhythmic eighth-note pattern. The Piano, Brass, and Echoes parts continue with their respective harmonic lines, featuring various accidentals and slurs.

23

High Hat

Crash

Bass

Brass

Echoes



26

High Hat

Crash

Bass

Brass

Echoes

28

High Hat

Crash

Bass

Brass

Echoes

Detailed description: This system contains measures 28 and 29. The High Hat part consists of a steady eighth-note pattern. The Crash part features three accented eighth notes with asterisks, with the second and third notes beamed together. The Bass part has a melodic line starting on a dotted quarter note, followed by eighth notes, and a half-note chord at the end of measure 29. The Brass and Echoes parts play a similar melodic line with quarter notes and eighth notes.



30

High Hat

Crash

Guitar

Bass

Piano

Brass

Echoes

Echoes

Detailed description: This system contains measures 30 and 31. The High Hat and Crash parts are identical to the previous system. The Guitar part is silent in measure 30 and enters in measure 31 with a melodic line. The Bass part has a complex rhythmic pattern in measure 30, including a triplet of eighth notes, and continues with a melodic line in measure 31. The Piano part is silent in measure 30 and enters in measure 31 with a melodic line. The Brass and Echoes parts play a chordal accompaniment with quarter notes and half notes.

32

High Hat

Crash

Guitar

Bass

Piano

Echoes

Detailed description: This musical score covers measures 32 and 33. The High Hat part consists of a continuous eighth-note pattern. The Crash part features three accented eighth notes in each measure, with the second note of the second measure beamed to the first. The Guitar part is in treble clef with a key signature of one sharp (F#) and a melodic line that descends from the first measure to the second. The Bass part is in bass clef with a simple harmonic line. The Piano and Echoes parts are in treble clef and play a similar harmonic line, with the Echoes part being a slightly lower octave.



34

High Hat

Crash

Guitar

Bass

Piano

Echoes

Detailed description: This musical score covers measures 34 and 35. The High Hat part continues with the same eighth-note pattern. The Crash part has the same structure as in the previous system. The Guitar part continues its melodic line. The Bass part continues its harmonic line. The Piano and Echoes parts continue their respective harmonic lines, with the Echoes part remaining a lower octave than the Piano.

36

High Hat

Crash

Guitar

Bass

Piano

Echoes



38

High Hat

Crash

Guitar

Bass

Piano

Echoes

40

High Hat

Crash

Guitar

Bass

Piano

Brass

Echoes

Echoes

Detailed description: This block contains the musical notation for measures 40 and 41. The High Hat part consists of a continuous eighth-note pattern. The Crash part features three accented eighth notes in each measure, with the second note of each measure beamed together. The Guitar part has a melodic line in the first measure, followed by a whole rest in the second. The Bass part plays a steady eighth-note line. The Piano, Brass, and Echoes parts have rests in the first measure and enter in the second measure with a melodic line.



42

High Hat

Crash

Bass

Piano

Brass

Echoes

Echoes

Detailed description: This block contains the musical notation for measures 42 and 43. The High Hat part continues with the same eighth-note pattern. The Crash part has the same accented eighth-note pattern. The Bass part continues with its eighth-note line. The Piano, Brass, and Echoes parts continue their melodic lines from the previous measures.

44

High Hat

Crash

Bass

Piano

Brass

Echoes

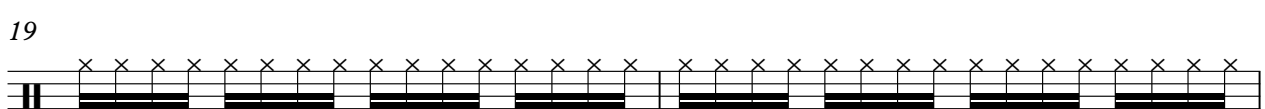
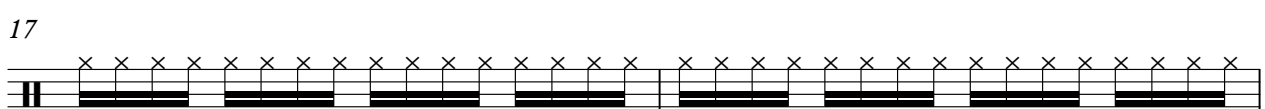
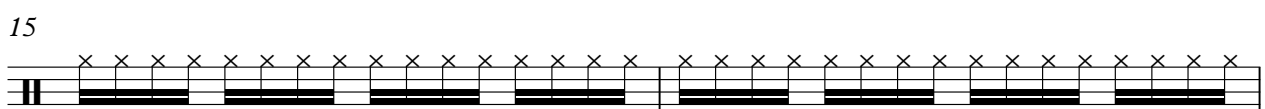
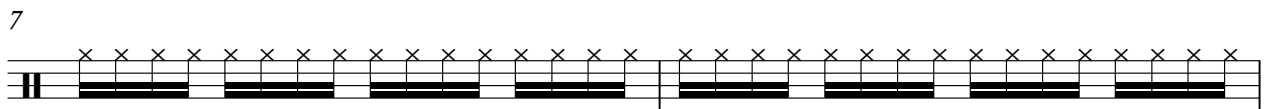
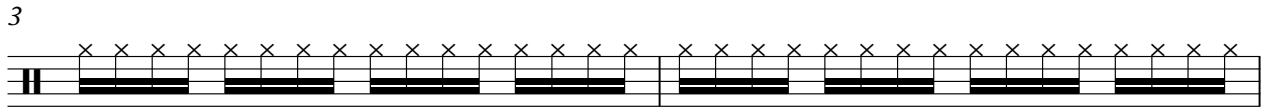
Echoes

Detailed description: This musical score page, numbered 44, features seven staves. The top two staves are for percussion: 'High Hat' and 'Crash'. The 'High Hat' staff shows a continuous pattern of eighth notes with 'x' marks above them. The 'Crash' staff has four 'x' marks with stems, the second and third of which are connected by a slur. The 'Bass' staff is in bass clef with a key signature of one flat, containing a sequence of notes with rests. The 'Piano' staff is in treble clef with a key signature of one flat, containing a sequence of notes with a slur. The 'Brass' staff is in treble clef with a key signature of one flat, containing a sequence of notes with a slur. The two 'Echoes' staves are in treble clef with a key signature of one flat, containing a sequence of notes with a slur. The page concludes with a double bar line.

Mega Man VI - Centaurman

High Hat

♩ = 132,000137



V.S.

2

High Hat

21



23



25



27



29



31



33



35



37



39



High Hat

41



43

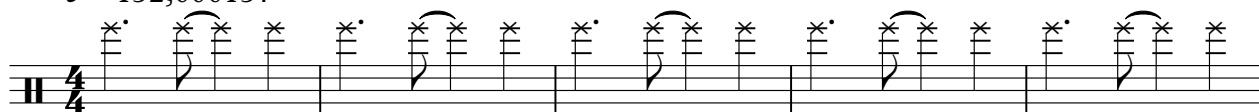


Crash

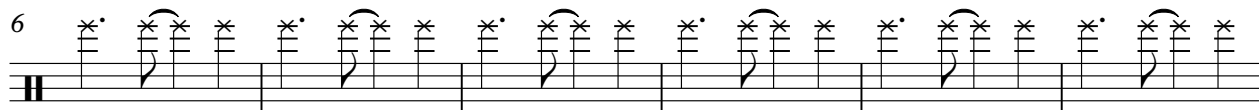
Mega Man VI - Centaurman

♩ = 132,000137

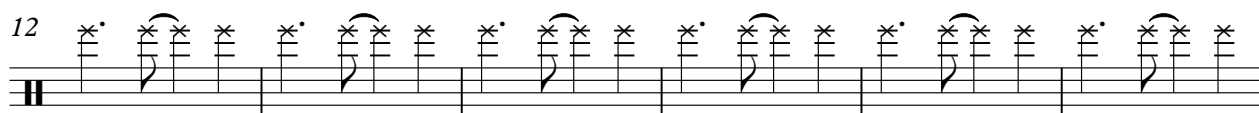
4



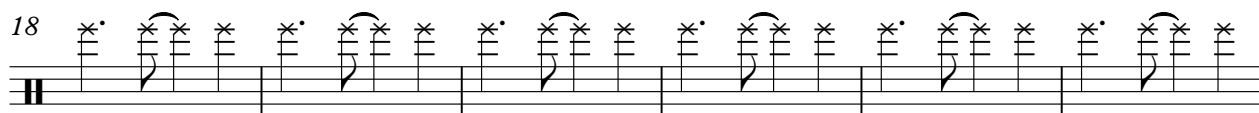
6



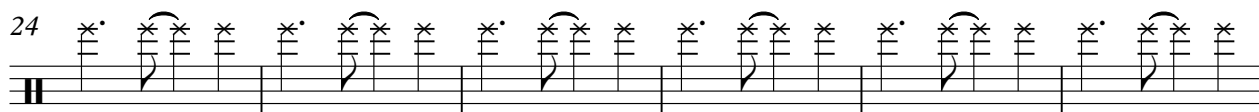
12



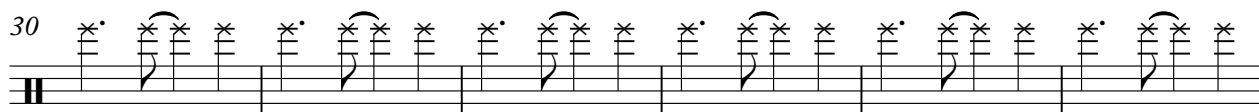
18



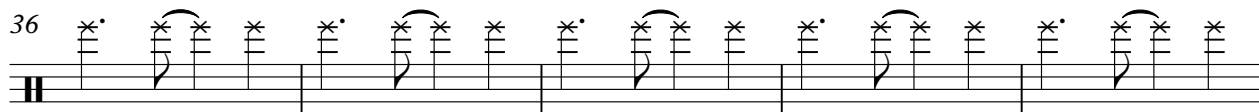
24



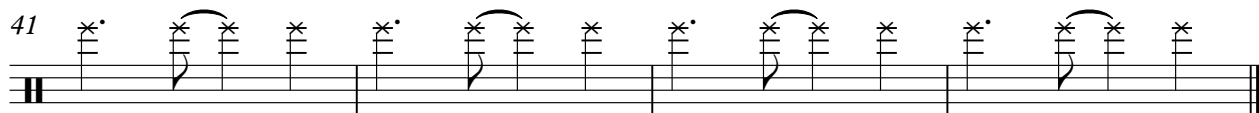
30



36



41



Guitar

Mega Man VI - Centaurman

♩ = 132,000137

8

12

16

12

31

35

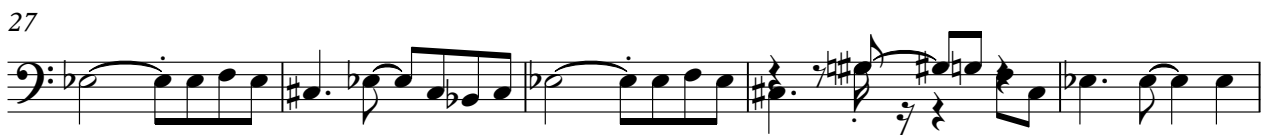
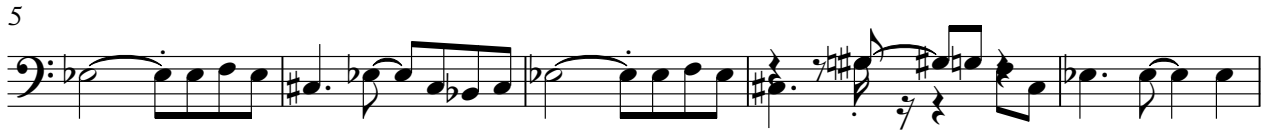
38

4

Mega Man VI - Centaurman

Bass

♩ = 132,000137



Piano

Mega Man VI - Centaurman

♩ = 132,000137

8

12

16

22

8

33

37

41

Mega Man VI - Centaurman

Brass

♩ = 132,000137

5

9 **10**

23

27

31 **10**

42

Mega Man VI - Centaurman

Echoes

♩ = 132,000137

5

9 **10**

23

27

31 **10**

42

Echoes

Mega Man VI - Centaurman

♩ = 132,000137

8

12

16

22

8

33

37

41