

Metroid - Brinstar Theme

♩ = 152,000320

Sequence*divided

Sequence*divided

Sequence*divided

Sequence*divided

♩ = 152,000320

4

Sequence*divided

Sequence*divided

Sequence*divided

Sequence*divided

Sequence*divided

2

Musical score for guitar, measures 6-7. The score consists of five staves. The top staff is guitar tablature, showing fret numbers and fingerings. Above the tablature, there are 'x' marks indicating muted strings. Measures 6 and 7 feature triplets of eighth notes on strings 2, 3, and 4. The second staff is a treble clef with a key signature of one flat (Bb). The third staff is a treble clef with a key signature of one flat (Bb). The fourth staff is a treble clef with a key signature of one flat (Bb). The fifth staff is a bass clef with a key signature of one flat (Bb), featuring triplets of eighth notes on strings 1, 2, and 3.

Musical score for guitar, measures 8-9. The score consists of five staves. The top staff is guitar tablature, showing fret numbers and fingerings. Above the tablature, there are 'x' marks indicating muted strings. Measures 8 and 9 feature triplets of eighth notes on strings 2, 3, and 4. The second staff is a treble clef with a key signature of one flat (Bb). The third staff is a treble clef with a key signature of one flat (Bb). The fourth staff is a treble clef with a key signature of one flat (Bb). The fifth staff is a bass clef with a key signature of one flat (Bb), featuring triplets of eighth notes on strings 1, 2, and 3.

10

Sequence*divided

Sequence*divided

Sequence*divided

Sequence*divided

Sequence*divided

12

Sequence*divided

Sequence*divided

Sequence*divided

Sequence*divided

Sequence*divided

4

14

Sequence*divided

Sequence*divided

Sequence*divided

Sequence*divided

Sequence*divided

16

Sequence*divided

Sequence*divided

Sequence*divided

Sequence*divided

Sequence*divided

18

Sequence*divided

Sequence*divided

Sequence*divided

Sequence*divided

Sequence*divided

20

Sequence*divided

Sequence*divided

Sequence*divided

Sequence*divided

Sequence*divided

22

Sequence*divided

Sequence*divided

Sequence*divided

Sequence*divided

Sequence*divided

Detailed description: This system contains measures 22 and 23. The guitar staff (top) shows a sequence of notes with 'x' marks above them, and triplets of eighth notes in measures 22 and 23. The piano staff (second) features a bass clef, a key signature of one flat, and triplets of eighth notes in measures 22 and 23. The first treble staff (third) has a treble clef and triplets of eighth notes in measures 22 and 23. The second treble staff (fourth) has a treble clef and triplets of eighth notes in measures 22 and 23. The bass staff (bottom) has a bass clef and triplets of eighth notes in measures 22 and 23. Fingerings are indicated by numbers 1-3.

24

Sequence*divided

Sequence*divided

Sequence*divided

Sequence*divided

Sequence*divided

Detailed description: This system contains measures 24 and 25. The guitar staff (top) shows a sequence of notes with 'x' marks above them, and triplets of eighth notes in measures 24 and 25. The piano staff (second) features a bass clef, a key signature of one flat, and triplets of eighth notes in measures 24 and 25. The first treble staff (third) has a treble clef and triplets of eighth notes in measures 24 and 25. The second treble staff (fourth) has a treble clef and triplets of eighth notes in measures 24 and 25. The bass staff (bottom) has a bass clef and triplets of eighth notes in measures 24 and 25. Fingerings are indicated by numbers 1-3.

27

Sequence*divided

Sequence*divided

Sequence*divided

Sequence*divided

Sequence*divided

7

29

Sequence*divided

Sequence*divided

Sequence*divided

Sequence*divided

Sequence*divided

6

6

Metroid - Brinstar Theme

Sequence*divided

♩ = 152,000320

5

9

13

17

21

25

28

Detailed description: This image shows a guitar tab for the Brinstar Theme sequence from Metroid, divided into eight systems. The tempo is marked as 152,000320. Each system consists of two staves: a guitar staff with fret numbers (represented by 'x') and a bass staff with notes. The guitar staff features various triplet and sextuplet markings. The bass staff shows a steady eighth-note rhythm. The sequence starts at measure 1 and ends at measure 28. The eighth system concludes with a double bar line.

Sequence*divided

Metroid - Brinstar Theme

♩ = 152,000320

4

10

16

3

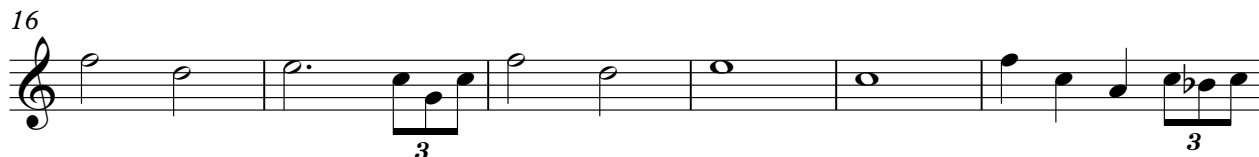
22

3

27

3

♩ = 152,000320



Sequence*divided

Metroid - Brinstar Theme

♩ = 152,000320



10



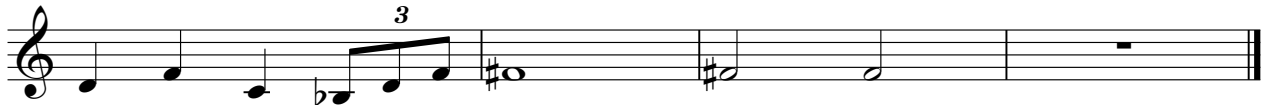
17



24



28



Sequence*divided

Metroid - Brinstar Theme

♩ = 152,000320

