

# Rygar - Opening Area

♩ = 110,000107

Lead

Bass

The first system shows the beginning of the piece. The lead part starts with a treble clef, a 6/4 time signature, and a key signature of one sharp (F#). The bass part is in the same time signature and key signature, featuring a complex, rhythmic pattern of eighth and sixteenth notes.

2

Lead

Bass

The second system continues the lead and bass parts. The lead part has a measure rest at the beginning, followed by a series of notes. The bass part continues its rhythmic pattern.

3

Lead

Bass

The third system continues the lead and bass parts. The lead part has a measure rest at the beginning, followed by a series of notes. The bass part continues its rhythmic pattern.

4

Lead

Bass

The fourth system continues the lead and bass parts. The lead part has a measure rest at the beginning, followed by a series of notes. The bass part continues its rhythmic pattern.

5

Lead

Bass

The fifth system continues the lead and bass parts. The lead part has a measure rest at the beginning, followed by a series of notes. The bass part continues its rhythmic pattern.

6

Lead

Bass

7

Lead

Bass

8

Lead

Bass

9

Lead

Bass

10

Lead

Bass

11

Lead

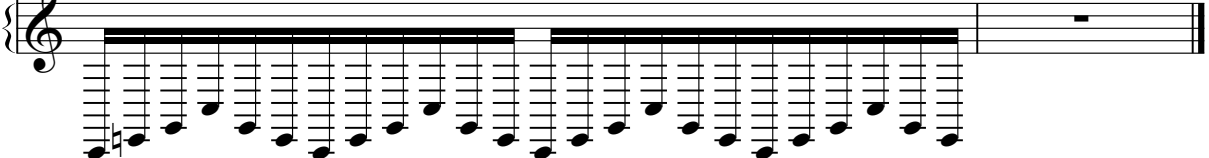
Bass

12

Lead



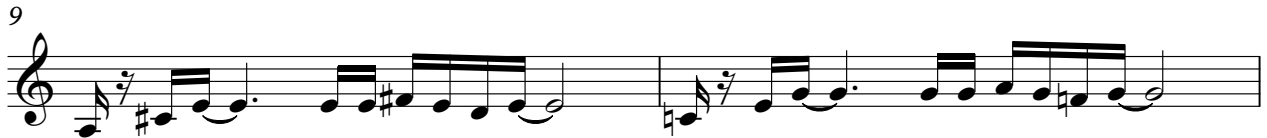
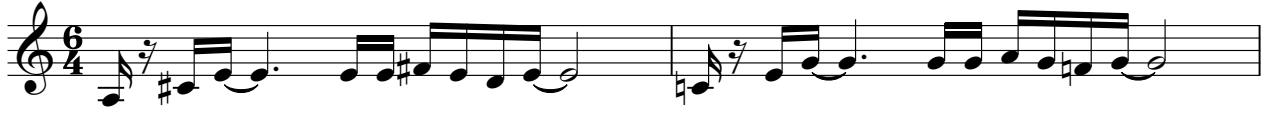
Bass



Lead

Rygar - Opening Area

♩ = 110,000107



# Rygar - Opening Area

Bass

♩ = 110,000107

This image displays ten staves of bass guitar tablature for the 'Opening Area' of the song 'Rygar'. Each staff is numbered from 2 to 10 on the left side. The notation is written on a six-line staff with a treble clef and a 6/4 time signature. The music consists of a continuous sequence of eighth notes, with some notes marked with accidentals (sharps and flats). The first staff begins with a treble clef and a 6/4 time signature. The tempo is indicated as ♩ = 110,000107. The tablature is organized into two systems of five staves each. The first system contains staves 2 through 6, and the second system contains staves 7 through 10. The notes are primarily eighth notes, with some accidentals (sharps and flats) appearing throughout the piece.

V.S.

2

Bass

11

Musical notation for measure 11, bass line. The notation is written on a single staff with a treble clef. It consists of a series of eighth notes, starting with a flat sign (b) on the first note. The notes are arranged in a sequence that moves up and then down across the staff. The measure ends with a double bar line.

12

Musical notation for measure 12, bass line. The notation is written on a single staff with a treble clef. It consists of a series of eighth notes, starting with a flat sign (b) on the first note. The notes are arranged in a sequence that moves up and then down across the staff. The measure ends with a double bar line.