

# Super Mario Brothers 3 - World 1 (Grass Land)

♩ = 199,200546

Drums

Bass

Guitar

3

Drums

Bass

Guitar

5

Drums

Bass

Guitar

7

Drums

Bass

Guitar

9

Drums

Bass

Guitar

11

Drums

Bass

Guitar

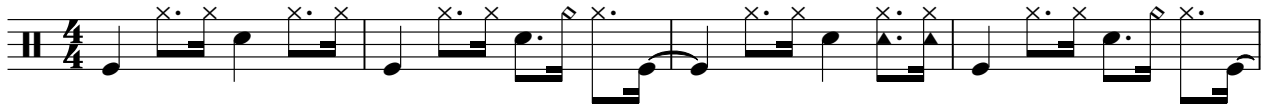
Drums 2

Drums 3

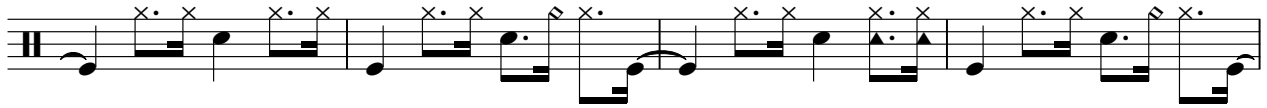
Drums

Super Mario Brothers 3 - World 1 (Grass Land)

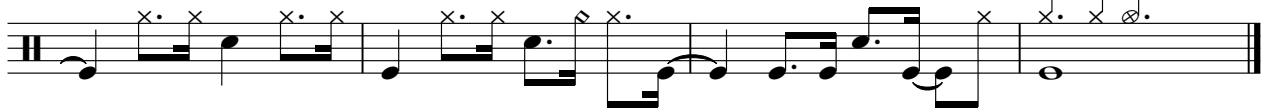
♩ = 199,200546



5



9



Bass

Super Mario Brothers 3 - World 1 (Grass Land)

♩ = 199,200546



4



7



10



# Super Mario Brothers 3 - World 1 (Grass Land)

Guitar

♩ = 199,200546

Measures 1-2 of the guitar tab. The music is in 4/4 time. Measure 1 contains two chords: a G major chord (G-B-D) and a D major chord (D-F-A). Measure 2 contains two chords: a G major chord (G-B-D) and a D major chord (D-F-A). The bass line consists of quarter notes: G, B, D, G, B, D, G, B, D, G, B, D, G, B, D, G, B, D.

Measures 3-4 of the guitar tab. Measure 3 contains two chords: a G major chord (G-B-D) and a D major chord (D-F-A). Measure 4 contains two chords: a G major chord (G-B-D) and a D major chord (D-F-A). The bass line consists of quarter notes: G, B, D, G, B, D, G, B, D, G, B, D, G, B, D, G, B, D.

Measures 5-6 of the guitar tab. Measure 5 contains two chords: a G major chord (G-B-D) and a D major chord (D-F-A). Measure 6 contains two chords: a G major chord (G-B-D) and a D major chord (D-F-A). The bass line consists of quarter notes: G, B, D, G, B, D, G, B, D, G, B, D, G, B, D, G, B, D.

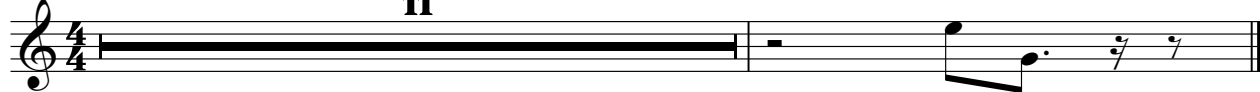
Measures 7-8 of the guitar tab. Measure 7 contains two chords: a G major chord (G-B-D) and a D major chord (D-F-A). Measure 8 contains two chords: a G major chord (G-B-D) and a D major chord (D-F-A). The bass line consists of quarter notes: G, B, D, G, B, D, G, B, D, G, B, D, G, B, D, G, B, D.

Drums 2

Super Mario Brothers 3 - World 1 (Grass Land)

♩ = 199,200546

**11**



Drums 3

Super Mario Brothers 3 - World 1 (Grass Land)

♩ = 199,200546

**11**

The musical notation is on a single staff. It begins with a double bar line, followed by a 4/4 time signature. A thick black horizontal line spans across the staff, representing a drum roll. This is followed by another double bar line, a quarter rest, a quarter note, a dotted quarter note, and two eighth notes with accents. The piece ends with a double bar line.