

# Super Metroid - Maridia Theme I

$\text{♩} = 120,000000$

Whistles

Bass 2

Bell Sound

Creepy Bell sound

$\text{♩} = 120,000000$

6

Whistles

Bell Sound

Creepy Bell sound

10

Whistles

Bell Sound

Creepy Bell sound

14

Whistles

Bell Sound

Creepy Bell sound

18

Bell Sound

Creepy Bell sound

21

Whistles

Bass 1

Creepy Bell sound

25

Whistles

Bass 1

Creepy Bell sound

28

Whistles

Bass 1

Creepy Bell sound

31

Whistles

Bass 1

Creepy Bell sound

35

Whistles

Bass 1

Creepy Bell sound

38

Whistles

Bass 1

Bass 2

41

Whistles

Background Drums

Bass 1

Bass 2

Creepy Bell sound

42

Whistles

Background Drums

Bass 1

Bass 2

Creepy Bell sound

43

Whistles

Background Drums

Bass 1

Bass 2

Detailed description of the musical score for measures 43-44. The score consists of four staves. The top staff, labeled 'Whistles', is in treble clef with a key signature of one sharp (F#) and contains a whole rest. The second staff, 'Background Drums', is in treble clef with a 7/8 time signature. It features a rhythmic pattern of eighth notes, with two groups of three notes beamed together and marked with a '3' above them, indicating triplets. The third staff, 'Bass 1', is in bass clef and contains eighth notes. The bottom staff, 'Bass 2', is also in bass clef and contains eighth notes. The music is written for measures 43 and 44.

44

Whistles

Background Drums

Bass 1

Bass 2

Detailed description of the musical score for measures 44-45. The score consists of four staves. The top staff, labeled 'Whistles', is in treble clef with a key signature of one sharp (F#) and contains a whole rest. The second staff, 'Background Drums', is in treble clef with a 7/8 time signature. It features a rhythmic pattern of eighth notes, with two groups of three notes beamed together and marked with a '3' above them, indicating triplets. The third staff, 'Bass 1', is in bass clef and contains eighth notes. The bottom staff, 'Bass 2', is also in bass clef and contains eighth notes. The music is written for measures 44 and 45.

45

Whistles

Background Drums

Bass 1

Bass 2

Creepy Bell sound

46

Whistles

Background Drums

Bass 1

Bass 2

Creepy Bell sound

47

Whistles

Background Drums

Bass 1

Bass 2

Detailed description of the musical score for measures 47 and 48. The score is written for four parts: Whistles, Background Drums, Bass 1, and Bass 2. Measure 47: Whistles has a whole rest. Background Drums features a triplet of eighth notes with a '3' above it. Bass 1 and Bass 2 play a rhythmic pattern of eighth notes with various accidentals. Measure 48: Whistles has a whole rest. Background Drums features a triplet of eighth notes with a '3' above it. Bass 1 and Bass 2 continue the rhythmic pattern from measure 47.

48

Whistles

Background Drums

Bass 1

Bass 2

Detailed description of the musical score for measures 48 and 49. The score is written for four parts: Whistles, Background Drums, Bass 1, and Bass 2. Measure 48: Whistles has a whole rest. Background Drums features a triplet of eighth notes with a '3' above it. Bass 1 and Bass 2 play a rhythmic pattern of eighth notes with various accidentals. Measure 49: Whistles has a whole rest. Background Drums features a triplet of eighth notes with a '3' above it. Bass 1 and Bass 2 continue the rhythmic pattern from measure 48.

49

Whistles

Background Drums

Bass 1

Bass 2

Creepy Bell sound

50

Whistles

Background Drums

Bass 1

Bass 2

Creepy Bell sound



51

Whistles

Background Drums

Bass 1

Bass 2

52

Whistles

Background Drums

Bass 1

Bass 2

53

Whistles

Background Drums

Bass 1

Bass 2

Creepy Bell sound

54

Whistles

Background Drums

Bass 1

Bass 2

Creepy Bell sound

55

Whistles

Background Drums

Bass 1

Bass 2

56

Whistles

Background Drums

Bass 1

Bass 2

Bell Sound

Creepy Bell sound

59

Whistles

Bell Sound

Creepy Bell sound

63

Whistles

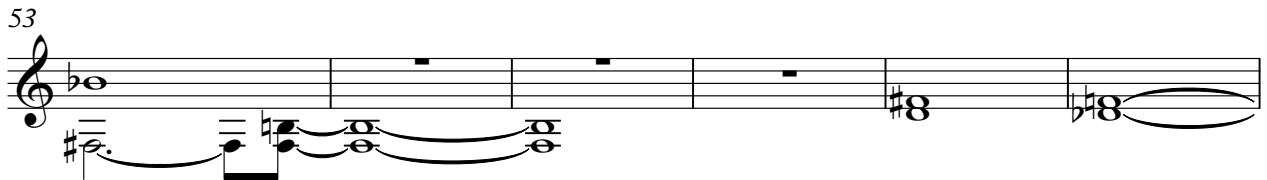
Bell Sound

Creepy Bell sound

# Super Metroid - Maridia Theme I

## Whistles

♩ = 120,000000



# Super Metroid - Maridia Theme I

## Background Drums

♩ = 120,000000

40 3 3

42 3 3

44 3 3

46 3 3

48 3 3

50 3 3

52 3 3

54 3 3

56 3 9

# Super Metroid - Maridia Theme I

Bass 1

♩ = 120,000000

20

25

31

36

40

44

48

52

55

9

Bass 2

Super Metroid - Maridia Theme I

♩ = 120,000000

37



42



46



50



54

9





Bell Sound

Super Metroid - Maridia Theme I

$\text{♩} = 120,000,000$

8

15

21 **36**

60

Creepy Bell sound

Super Metroid - Maridia Theme I

♩ = 120,000000

4 8 16 21 29 36 47 57 63