

Cat Stevens - Moonshadow

♩ = 110,000107

Vocal

E1

A

D

G

B

E2

Bass

Piano Lead



6

Vocal

E1

A

D

G

B

E2

Bass

Piano Lead

11

Vocal

E1

A

D

G

B

E2

Bass

Piano Lead



16

Vocal

E1

A

D

G

B

E2

Bass

Piano Lead

21

Vocal

E1

A

D

G

B

E2

Bass

Piano Lead



26

Vocal

E1

A

D

G

B

E2

Bass

Piano Lead

31

Vocal

E1

A

D

G

B

E2

Bass

Piano Lead



36

Vocal

E1

A

D

G

B

E2

Bass

Piano Lead

41

Vocal

E1

A

D

G

B

E2

Bass

Piano Lead



46

Vocal

E1

A

D

G

B

E2

Bass

Piano Lead

51

Vocal

E1

A

D

G

B

E2

Bass

Piano Lead



56

Vocal

E1

A

D

G

B

E2

Bass

Piano Lead

61

Vocal

E1

A

D

G

B

E2

Bass

Piano Lead



68

Vocal

E1

A

D

G

B

E2

Bass

Piano Lead

73

Vocal

E1

A

D

G

B

E2

Bass

Piano Lead



77

Vocal

E1

A

D

G

B

E2

Bass

Piano Lead



# Cat Stevens - Moonshadow

Vocal

♩ = 110,000107

4

9

14

19

24

29

34

39

44

49

V.S.

54



59



64



69



74



77



Cat Stevens - Moonshadow

E1

♩ = 110,000107

8

17

26

34

41

47

53

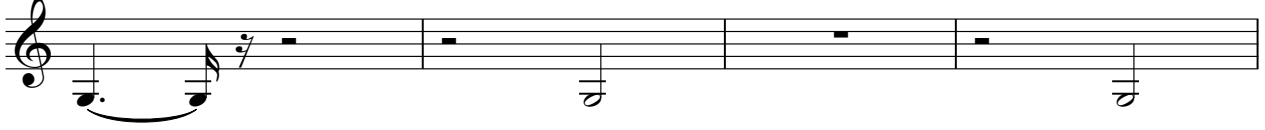
59

66

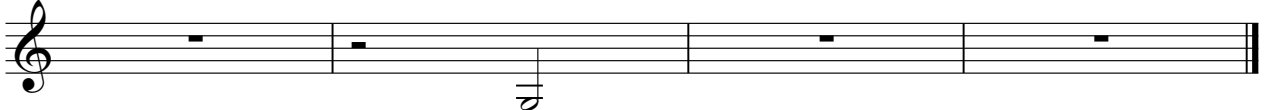
2

E1

73

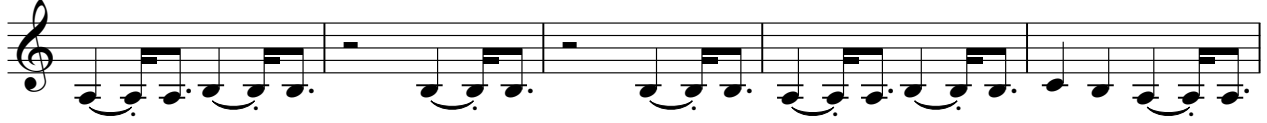


77

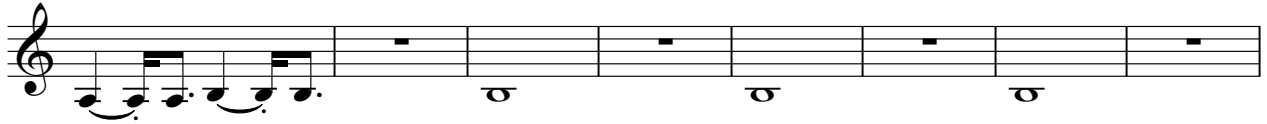




54



59



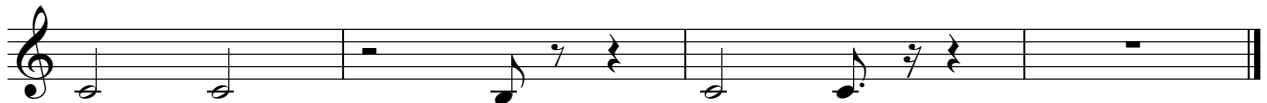
67



73



77





47



51



55



59



68



73



77





# Cat Stevens - Moonshadow

G

♩ = 110,000107



V.S.

41



45



49



53



57



62



69



73



77



# Cat Stevens - Moonshadow

B

♩ = 110,000107



V.S.



♩ = 110,000107

6

11

16

21

26

31

36

41

46

51



56



62



70



75



# Cat Stevens - Moonshadow

Bass

♩ = 110,000107

6

12

18

24

30

36

42

48

53

Detailed description: This is a bass guitar sheet music for the song 'Moonshadow' by Cat Stevens. The music is written in 4/4 time and begins with a tempo marking of 110,000107. The score consists of ten staves of music, each starting with a measure number (6, 12, 18, 24, 30, 36, 42, 48, 53). The notation includes various rhythmic values such as eighth and sixteenth notes, as well as chords and rests. The bass line is characterized by a steady, melodic progression with some syncopation and chordal textures.

V.S.

2

Bass

59

Musical notation for bass line starting at measure 59. It features a bass clef, a key signature of one flat, and a 7/8 time signature. The notation includes a dotted quarter note, a quarter note, and several chords represented by circles with stems and dots on a five-line staff.

66

Musical notation for bass line starting at measure 66. It features a bass clef, a key signature of one flat, and a 7/8 time signature. The notation includes a dotted quarter note, a quarter note, and several chords represented by circles with stems and dots on a five-line staff.

72

Musical notation for bass line starting at measure 72. It features a bass clef, a key signature of one flat, and a 7/8 time signature. The notation includes a dotted quarter note, a quarter note, and several chords represented by circles with stems and dots on a five-line staff.

77

Musical notation for bass line starting at measure 77. It features a bass clef, a key signature of one flat, and a 7/8 time signature. The notation includes a dotted quarter note, a quarter note, and several chords represented by circles with stems and dots on a five-line staff.



Piano Lead

Cat Stevens - Moonshadow

♩ = 110,000107

6

11

16

21

26

31

36

41

45

V.S.

50



55



60



65



70



75



78

