

Biffy Clyro - Joy Discovery Invention

♩ = 130,000137

Simon (Voice)

Ben

Simon (Guitar)

James

5

Simon (Voice)

Simon (Guitar)

James

9

Simon (Voice)

Simon (Guitar)

James

13

Simon (Voice)

Ben

Simon (Guitar)

James

16

Ben

Simon (Guitar)

James

19

Simon (Voice)

Ben

Simon (Guitar)

James

22

Ben

Simon (Guitar)

James

25

Ben

Simon (Guitar)

James

28

Simon (Voice)

Ben

Simon (Guitar)

James

31

Simon (Voice)

Ben

Simon (Guitar)

James

34

Simon (Voice)

Ben

Simon (Guitar)

James

37

Ben

Simon (Guitar)

James

40

Ben

Simon (Guitar)

James

43

Ben

Simon (Guitar)

James

45

Simon (Voice)

Ben

Simon (Guitar)

48

Ben

Simon (Guitar)

51

Simon (Voice)

Ben

Simon (Guitar)

54

Ben

Simon (Guitar)

57

Simon (Guitar)

60

Simon (Guitar)

63

Simon (Guitar)

Simon (Guitar)

66

Musical notation for Simon (Guitar) starting at measure 66. The notation is on a single staff with a treble clef. It consists of four measures of music. The first measure contains a quarter note chord (G4, B4, D5) followed by a quarter note chord (A4, C5, E5). The second measure contains a quarter note chord (B4, D5, F#5) followed by a quarter note chord (C5, E5, G5). The third measure contains a quarter note chord (D5, F#5, A5) followed by a quarter note chord (E5, G5, B5). The fourth measure contains a quarter note chord (F#5, A5, C6) followed by a quarter note chord (G5, B5, D6). The piece ends with a double bar line.

Simon (Voice)

Biffy Clyro - Joy Discovery Invention

♩ = 130,000137

4 2

11

2 4

20

8 2

33

10

47

4 17

Biffy Clyro - Joy Discovery Invention

Ben

♩ = 130,000137

12

16

21

26

30

34

38

42

45

50

V.S.

Simon (Guitar)

Biffy Clyro - Joy Discovery Invention

♩ = 130,000137

6

10

14

18

22

26

31

36

41

V.S.

45



49



53



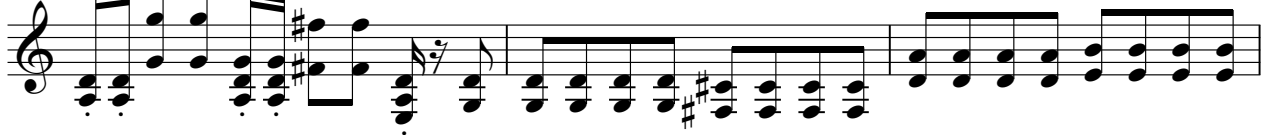
57



60



63



66



