

Foo Fighters - All my life

♩ = 154,000153

Taylor

Dave Muted

Dave Overdrive

Guitar

Nate

4
Dave Muted

7
Dave Muted

10
Dave Muted

13
Dave Muted

16
Dave Muted

19

Taylor

Dave Muted

Dave Overdrive

Guitar

Nate

22

Taylor

Dave Overdrive

Guitar

Nate

25

Taylor

Dave Overdrive

Guitar

Nate

28

Taylor

Dave Overdrive

Guitar

Nate

31

Taylor

Dave Overdrive

Guitar

Nate

34

Taylor

Dave Overdrive

Guitar

Nate

37

Taylor

Dave Overdrive

Guitar

Nate

40

Taylor

Dave Overdrive

Guitar

Nate

43

Taylor

Dave Muted

Dave Overdrive

Guitar

Nate

46

Taylor

Dave Muted

Dave Overdrive

Guitar

Nate

48

Taylor

Dave Overdrive

Guitar

Nate

50

Taylor

Dave Overdrive

Guitar

Nate

52

Taylor
Dave Overdrive
Guitar
Nate

This system covers measures 52 and 53. Measure 52 features a Taylor guitar line with a series of diamond-shaped notes, a Dave Overdrive and Guitar line with dense, overlapping chords, and a Nate bass line with a steady eighth-note pattern. Measure 53 shows a continuation of the Taylor line, with the Overdrive and Guitar lines featuring more complex chordal textures and the bass line maintaining its rhythmic flow.

54

Taylor
Dave Overdrive
Guitar
Nate

This system covers measures 54 and 55. Measure 54 continues the Taylor line with diamond notes, while the Overdrive and Guitar lines introduce a more intricate, syncopated chordal pattern. The bass line remains consistent with its eighth-note accompaniment. Measure 55 shows the Taylor line moving towards a final note, with the Overdrive and Guitar lines providing a dense harmonic backdrop.

56

Taylor
Dave Overdrive
Guitar
Nate

This system covers measures 56 and 57. Measure 56 continues the Taylor line, with the Overdrive and Guitar lines maintaining their complex chordal texture. The bass line continues its steady eighth-note accompaniment. Measure 57 concludes the system with the Taylor line reaching a final note, supported by the dense harmonic accompaniment of the other instruments.

58

Taylor

Dave Overdrive

Guitar

Nate

This system covers measures 58, 59, and 60. The Taylor part features a rhythmic pattern of eighth notes with asterisks above measures 58 and 59, and double bars above measure 60. The Dave Overdrive and Guitar parts consist of dense, multi-voice chordal textures. The Nate part provides a steady bass line.

61

Taylor

Dave Overdrive

Guitar

Nate

This system covers measures 61, 62, and 63. The Taylor part continues with eighth notes, featuring asterisks and double bars in measures 61 and 62. The Dave Overdrive and Guitar parts show more melodic activity within their chordal textures. The Nate part remains a consistent bass line.

64

Taylor

Dave Overdrive

Guitar

Nate

This system covers measures 64, 65, and 66. The Taylor part includes asterisks and double bars in measures 64 and 65. The Dave Overdrive and Guitar parts continue with their chordal textures. The Nate part maintains the bass line.

67

Taylor

Dave Overdrive

Guitar

Nate

70

Taylor

Dave Overdrive

Guitar

Nate

73

Taylor

Dave Overdrive

Guitar

Nate

76

Taylor

Dave Overdrive

Guitar

Nate

79

Taylor

Dave Muted

Dave Overdrive

Guitar

Nate

82

Taylor

Dave Muted

Dave Overdrive

Guitar

Nate

84

Taylor

Dave Overdrive

Guitar

Nate

86

Taylor

Dave Overdrive

Guitar

Nate

88

Taylor

Dave Overdrive

Guitar

Nate

90

Taylor

Dave Overdrive

Guitar

Nate

This system covers measures 90 and 91. The Taylor part begins with a star symbol and diamond-shaped notes. The Dave Overdrive and Guitar parts feature dense, multi-voice chordal textures with many beamed notes. The Nate part provides a steady bass line with quarter notes.

92

Taylor

Dave Overdrive

Guitar

Nate

This system covers measures 92 and 93. The notation is similar to the previous system, with complex textures in the upper parts and a simple bass line. The Taylor part continues with its star and diamond symbols.

94

Taylor

Dave Overdrive

Guitar

Nate

This system covers measures 94 and 95. The Taylor part includes star symbols and double bar lines. The Dave Overdrive and Guitar parts continue with their complex textures. The Nate part remains a simple bass line.

97

Taylor

Dave Overdrive

Guitar

Nate

100

Taylor

Dave Muted

Dave Overdrive

Guitar

Nate

103

Dave Muted

Guitar

106

Dave Muted

Guitar

108

Dave Muted

Guitar

110

Dave Muted

Guitar

112

Taylor

Dave Muted

Guitar

Nate

115

Taylor

Dave Muted

Guitar

Nate

118

Taylor

Dave Muted

Guitar

Nate

121

Taylor

Dave Muted

Guitar

Nate

123

Taylor

Dave Muted

Guitar

Nate

125

Taylor

Dave Muted

Guitar

Nate

127

Taylor

Dave Muted

Dave Overdrive

Guitar

Nate

130

Taylor

Dave Overdrive

Guitar

Nate

132

Taylor

Dave Overdrive

Guitar

Nate

134

Taylor

Dave Overdrive

Guitar

Nate

136

Taylor

Dave Overdrive

Guitar

Nate

138

Taylor

Dave Overdrive

Guitar

Nate

140

Taylor

Dave Overdrive

Guitar

Nate

142

Taylor

Dave Overdrive

Guitar

Nate

144

Taylor

Dave Overdrive

Guitar

Nate

146

Taylor

Dave Overdrive

Guitar

Nate

148

Taylor

Dave Overdrive

Guitar

Nate

150

Taylor
Dave Overdrive
Guitar
Nate

This system covers measures 150 and 151. Measure 150 features a Taylor guitar with a series of diamond-shaped notes on a single string, marked with asterisks. The Dave Overdrive and Guitar parts play a complex, multi-layered chordal texture with many notes. Measure 151 shows the Taylor part continuing with diamond notes, while the other instruments play a similar dense texture. Measure 151 ends with three double bar lines, each marked with an asterisk.

152

Taylor
Dave Overdrive
Guitar
Nate

This system covers measures 152 and 153. Measure 152 continues the Taylor part with diamond notes. The Dave Overdrive and Guitar parts play a rhythmic pattern of chords with eighth notes. Measure 153 shows the Taylor part moving to a new melodic line, while the other instruments continue their rhythmic accompaniment.

154

Taylor
Dave Overdrive
Guitar
Nate

This system covers measures 154 and 155. Measure 154 continues the Taylor part with diamond notes. The Dave Overdrive and Guitar parts play a rhythmic pattern of chords with eighth notes. Measure 155 shows the Taylor part moving to a new melodic line, while the other instruments continue their rhythmic accompaniment.

156

Taylor

Dave Overdrive

Guitar

Nate

159

Taylor

Dave Overdrive

Guitar

Nate

162

Taylor

Dave Overdrive

Guitar

Nate

165

Taylor

Musical notation for the Taylor part, featuring a series of eighth notes and quarter notes with asterisks above them, indicating specific techniques or accents. The notation is on a single staff with a treble clef.

Dave Overdrive

Musical notation for the Dave Overdrive part, featuring a long note with a slur and a sharp sign, followed by a series of chords and a final chord with a sharp sign. The notation is on a single staff with a treble clef.

Guitar

Musical notation for the Guitar part, featuring a series of chords with a sharp sign above them, indicating a specific technique or accent. The notation is on a single staff with a treble clef.

Nate

Musical notation for the Nate part, featuring a series of eighth notes and quarter notes with a sharp sign above them, indicating a specific technique or accent. The notation is on a single staff with a bass clef.

♩ = 154,000153

19

23

27

31

35

39

42

46

50

54

58

62

66

70

74

78

82

Taylor

3

86

90

94

98

113

117

121

124

127

131

V.S.

135

Musical notation for measure 135, featuring a guitar staff with a treble clef and a double bar line. The notation includes a series of eighth notes with stems pointing down, and a double bar line with a star and a double underline symbol.

139

Musical notation for measure 139, featuring a guitar staff with a treble clef and a double bar line. The notation includes a series of eighth notes with stems pointing down, and a double bar line with a star and a double underline symbol.

143

Musical notation for measure 143, featuring a guitar staff with a treble clef and a double bar line. The notation includes a series of eighth notes with stems pointing down, and a double bar line with a star and a double underline symbol.

147

Musical notation for measure 147, featuring a guitar staff with a treble clef and a double bar line. The notation includes a series of eighth notes with stems pointing down, and a double bar line with a star and a double underline symbol.

151

Musical notation for measure 151, featuring a guitar staff with a treble clef and a double bar line. The notation includes a series of eighth notes with stems pointing down, and a double bar line with a star and a double underline symbol.

155

Musical notation for measure 155, featuring a guitar staff with a treble clef and a double bar line. The notation includes a series of eighth notes with stems pointing down, and a double bar line with a star and a double underline symbol.

159

Musical notation for measure 159, featuring a guitar staff with a treble clef and a double bar line. The notation includes a series of eighth notes with stems pointing down, and a double bar line with a star and a double underline symbol.

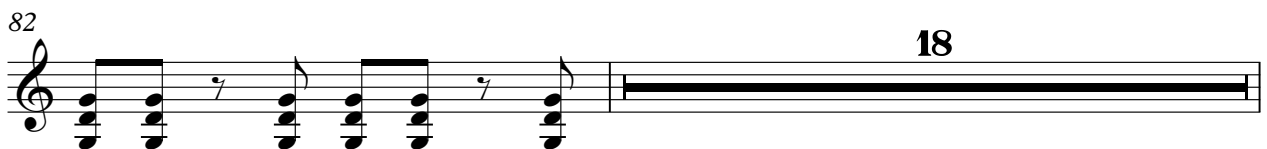
163

Musical notation for measure 163, featuring a guitar staff with a treble clef and a double bar line. The notation includes a series of eighth notes with stems pointing down, and a double bar line with a star and a double underline symbol.

165

Musical notation for measure 165, featuring a guitar staff with a treble clef and a double bar line. The notation includes a series of eighth notes with stems pointing down, and a double bar line with a star and a double underline symbol.

♩ = 154,000153



101



105



109



113



117



121



125



128



39

♩ = 154,000153

19

23

27

32

38

44

2

48

50

53

55

57

60

64

70

76

83

85

87

90

92

94

98

129

132

135

138

141

144

146

148

V.S.

151

153

155

158

163

Foo Fighters - All my life

Guitar

♩ = 154,000153

20

24

28

32

36

40

43

2

47

49

51

54

56

58

62

66

70

74

78

2

83

85

87

90

92

94

98

4

105

109

113

122

129

132

135

138

141

144

146



148



151



153



155



158



162



165



Nate

Foo Fighters - All my life

♩ = 154,000153

20



24



28



32



36



40



43



2

47



51



55



59



63



67



71



75



79



84



88



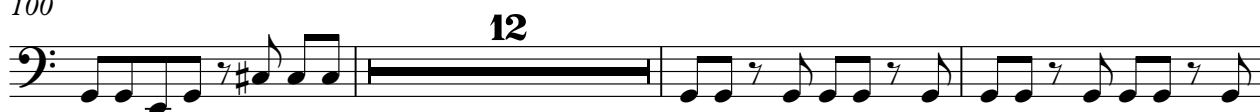
92



96



100



115



119



123



127



131



135



V.S.

139



143



147



151



155



159



163



165

