

# Bleeding Through - Love Lost In A Hail of Gunfire

♩ = 240,000000

Track 1

Track 1	Track 2
4 4	2 2 2 0
2 2	3 2 0 2
0 4 3	0 4 3
2 0 4 0	2 0 4 0

6

Track 1

Track 1	Track 2
2 2 0	2 2 2 2 2
3 2 0 2	2 2 2 2
3 4 0	3 4 0
2 0 4 0	2 0 4 0

10

Track 1

Track 1	Track 2
2 2 0	2 2 2 2 2
3 2 0 2	2 2 2 2
3 4 0	3 4 0
2 0 4 0	2 0 4 0

14

Track 1

Track 1	Track 2
0 3 0	0 3 0
2 1 2 2	2 1 2 2
5 2 5 2	5 2 5 2
0 2 3 0	0 2 3 0

18

Track 1

Track 1	Track 2
0 3 0	0 3 0
2 1 2 2	2 1 2 2
5 2 5 2	5 2 5 2
0 2 3 0	0 2 3 0

22

## Track 1

## Track 1

## Track 1

## Track 1

## Track 1

Track 1

Figure 1 shows a musical score for two tracks, Track 1 and Track 2, across four measures. The notes are represented by numbers 0, 2, 4, and rests (indicated by '0' in the original image). The score is divided into four measures by vertical bar lines. Track 1 is on a treble clef and Track 2 is on a bass clef. The key signature is one flat (B-flat).

Measure	Track 1 Notes	Track 2 Notes
1	T, A, B	T, A, B
2	0, 4, 2, 2, 0, 4, 2, 2	0, 4, 2, 2, 0, 4, 2, 2
3	0, 0, 0, 0, 0, 0, 0, 0	0, 0, 0, 0, 0, 0, 0, 0
4	2, 0, 4, 2, 0, 4, 2	2, 0, 4, 2, 0, 4, 2

Figure 1 shows a musical score for two tracks, Track 1 and Track 2, with a tempo marking of 50. The score is divided into four measures. Track 1 and Track 2 have identical notation. The notes are labeled T, A, B, and 0. The rests are labeled 2, 4, and 0. The score is written on a grand staff with two systems of three staves each. The first system has a brace on the left side. The second system has a brace on the left side. The third system has a brace on the left side. The fourth system has a brace on the left side. The notes and rests are placed on the staves as follows: Measure 1: T (T), A (A), B (B), 0 (0), 2 (2), 2 (2), 0 (0), 4 (4), 2 (2). Measure 2: 2 (2), 0 (0), 4 (4), 2 (2), 2 (2), 0 (0), 4 (4), 2 (2). Measure 3: 2 (2), 2 (2), 2 (2), 2 (2), 2 (2), 2 (2), 2 (2), 2 (2). Measure 4: 3 (3), 2 (2), 0 (0), 2 (2), 2 (2), 2 (2), 2 (2), 2 (2).

54

Track 1

Track 2

59

Track 1

Track 2

64 ♩ = 120,000000

Track 1

Track 2

69 ♩ = 120,000000

Track 1

T  
A  
B

2 2 2 2 2 2 2 2

0 2 0  
5 0 3 5

2 2 2 2 2 2 2 2

Track 2

T  
A  
B

2 2 2 2 2 2 2 2

0 2 0  
5 0 3 5

2 2 2 2 2 2 2 2



97

Track 1

Track 2

Figure 10 shows a musical score for two tracks, Track 1 and Track 2, across four measures. The notation is as follows:

Measure	Track 1 T	Track 1 A	Track 1 B	Track 2 T	Track 2 A	Track 2 B
1			2 2 2 2 2 2 2 2			2 2 2 2 2 2 2 2
2	0	4 2	2 0 4 2	0	4 2	2 0 4 2
3	0 0 0 0 0 0 0 0	3 3 3 3 3 3 3 3		0 0 0 0 0 0 0 0	3 3 3 3 3 3 3 3	
4	2 0	4 2 0 4	2	2 0	4 2 0 4	2

105

Track 1

Track 2

Figure 1 shows a musical score for two tracks, Track 1 and Track 2, across four measures. The notation is as follows:

Track	Measure	Staff 1 (Top)	Staff 2 (Middle)	Staff 3 (Bottom)
Track 1	1	T 0	A 2	B 0 2
	2		4 2	2 0
	3			4
	4		2	2 2 2 2
Track 2	1	T 0	A 2	B 0 2
	2		4 2	2 0
	3			4
	4		2	2 2 2 2

117

Track 1

Track 2

121

Track 1

Track 2

125

Track 1

Track 2

129

Track 1

Track 2

133 ♩ = 120,000000

Track 1

Track 2

137 ♩ = 120,000000

Track 1

Track 2



## Track 1

## Track 2

♩ = 150,000000

## Track 1

## Track 2

♩ = 120,000000

## Track 1

## Track 2

$\mathcal{J} = 120,000,000$

## Track 1

## Track 2

♩ = 140,000137

## Track 1

## Track 2

$\mathcal{J} = 140,000137$

Track 1

## Track 2



184 ♪ = 140,000137 9

Track 1

Track 2

3	3	2	2	3	2	2	3	2	3	3	3	0	2	0	2	2	2	3	0	3	2	2	2
3	3	2	2	3	2	2	3	2	3	3	3	0	2	0	2	2	2	3	0	3	2	2	2

188 ♪ = 140,000137

Track 1

Track 2

3	3	2	2	3	2	2	3	2	3	3	3	0	2	0	2	2	2	3	0	3	2	2	2
3	3	2	2	3	2	2	3	2	3	3	3	0	2	0	2	2	2	3	0	3	2	2	2

192 ♪ = 140,000137

Track 1

Track 2

3	3	2	2	3	2	2	3	2	3	3	3	0	2	0	2	2	2	3	0	3	2	2	2
3	3	2	2	3	2	2	3	2	3	3	3	0	2	0	2	2	2	3	0	3	2	2	2

196 ♪ = 140,000137

Track 1

Track 2

3	3	2	2	3	2	2	3	2	3	3	3	0	2	0	2	2	2						
3	3	2	2	3	2	2	3	2	3	3	3	0	2	0	2	2	2						

199 ♪ = 90,000092

Track 1

Track 2

3	0	3	2	2	2	3	3	2	2	3	2	9	9										
												3	9	9									
3	0	3	2	2	2	3	3	2	2	3	2	9	9										
												3	9	9									

# Bleeding Through - Love Lost In A Hail of Gunfire

## Track 1

♩ = 240,000000

E					
B					
G					
D	4	4		0	2 0 4 0
A	2	2		4	
E				3	
A					2 2 2 2 2

7

T					
A					
B	3	2 0 2	3 4 0	2 0 4 0	2 2 0
	2 2 2		3 3		2 2 2 2 2

12

T					
A					
B	3	4 0	2 0 4 0	0 3 0	3 0
	3		4	5 2 1 2 5 2	2 1 2 5 2

17

T					
A					
B	0 2 0	0 3 0	2 3 0	0 3 0	0 2 0
	5 0 3 5	5 2 1 2 5 2	2 1 2 5 2	5 2 1 2 5 2	5 0 3 5

22

T					
A					
B	2 2 0	3 2 0 2	0 4	2 0 4 0	2 2 0
	2 2 2 2 2	2 2 2 2	3 4 3		2 2 2 2 2

27

T					
A					
B	3 2 0 2	0 4	2 0 4 0	2 2 0	3 2 0 2
	2 2 2	3		2 2 2 2 2	2 2 2

32

T					
A					
B	0 4	2 0 4 0	2 2 0	3 2 0 2	0 4
	3		2 2 2 2 2	2 2 2	3 4 3

37

T					
A	2 0 4 0	0 0 0 0 0 0 0 0	0 4 2 0 4 2		
B		3 3 3 3 3 3 3 3	2 2 2 2 2	2 2 2 2 2 2 2 2	

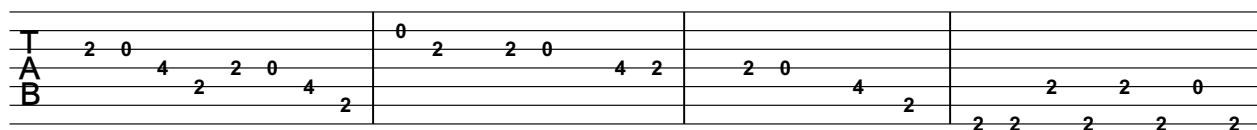
41

T					
A	0 4 2	0 0 0 0 0 0 0 0	0 4 2 0 4 2		
B	2 3 2 0	3 3 3 3 3 3 3 3	2 2 2 2 2	2 2 2 2 2 2 2 2	

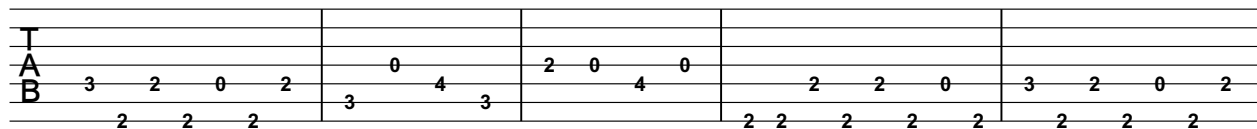
45

T					
A	0 4 2	2 2 2 2 2 2 2 2	0 4 2 0 4 2	0 0 0 0 0 0 0 0	
B	2 3 2 0	0 0 0 0 0 0 0 0	2 2 2 2 2	3 3 3 3 3 3 3 3	

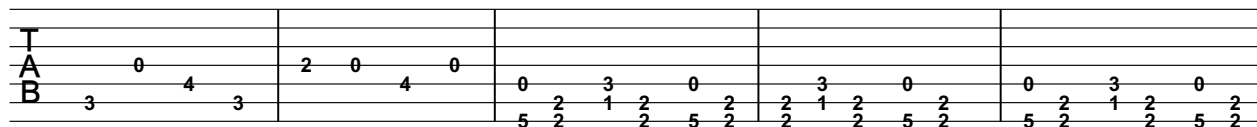
V.S.



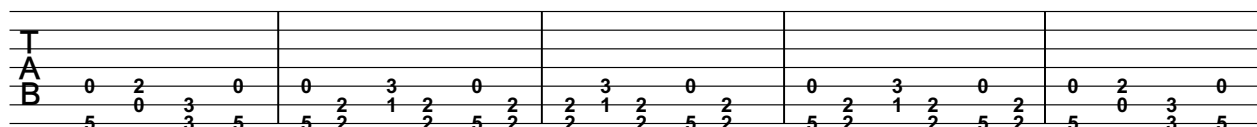
53



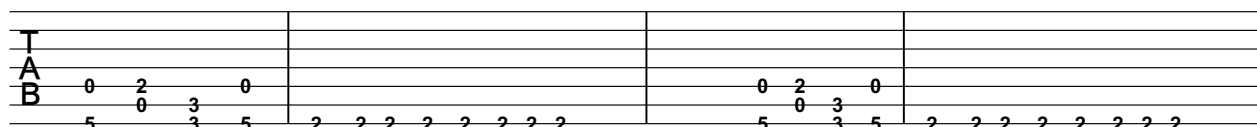
58



63

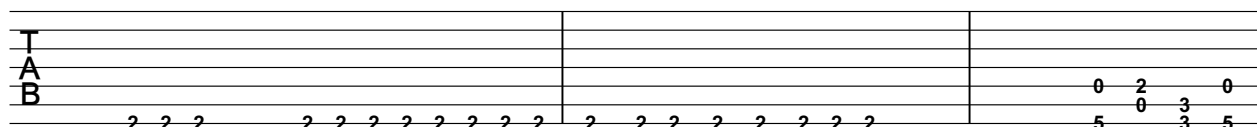


68 ♪ = 120,000000 ♪ = 120,000000



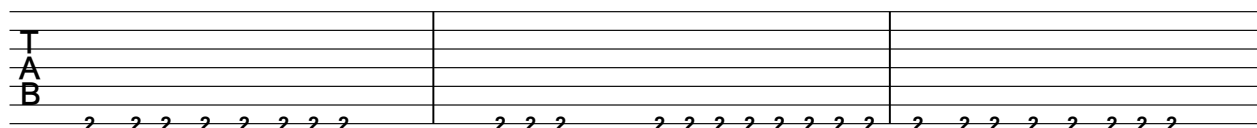
72

♪ = 120,000000

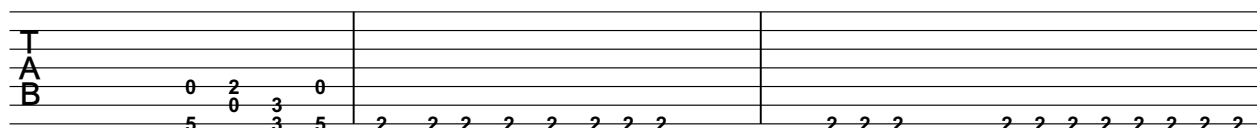


75

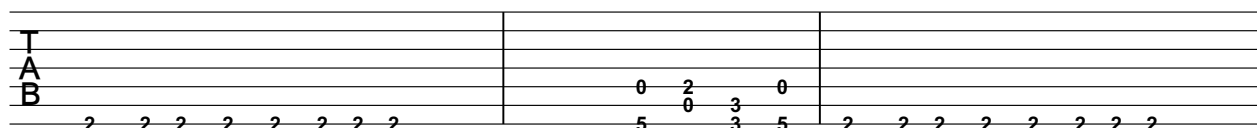
♪ = 120,000000



78

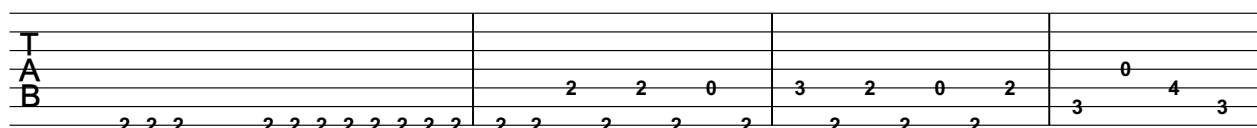


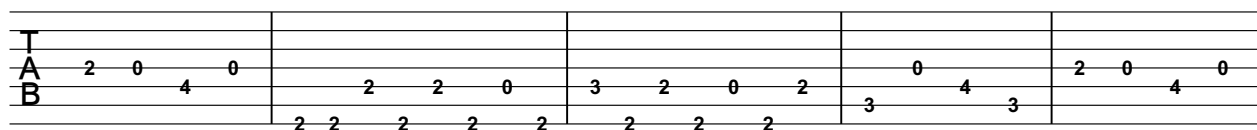
81 ♪ = 120,000000



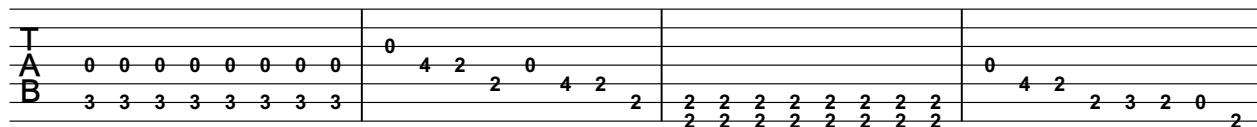
84

♪ = 240,000000

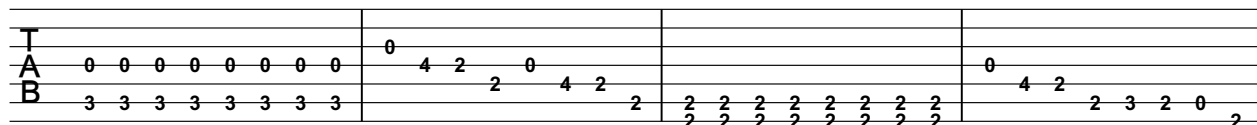




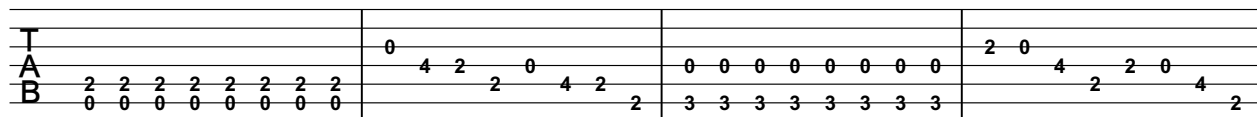
93



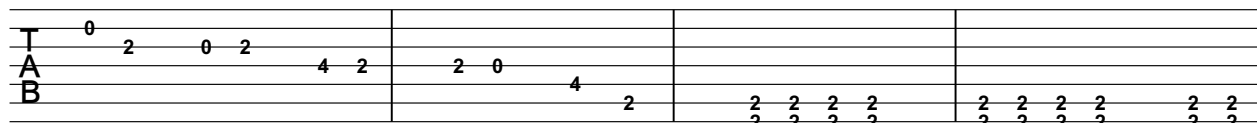
97



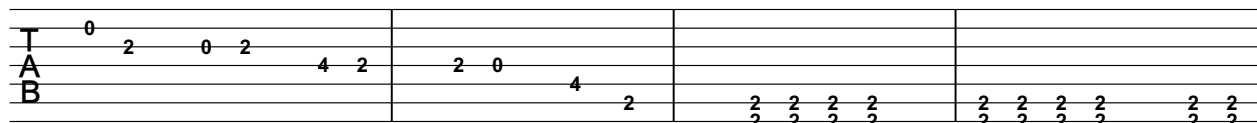
101



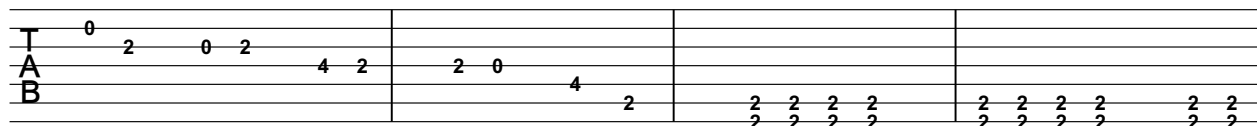
105



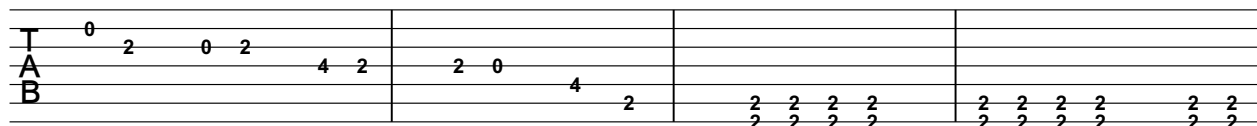
109



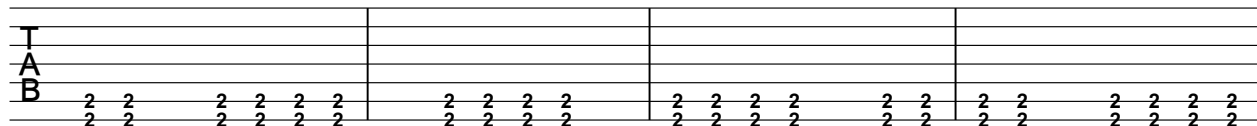
113



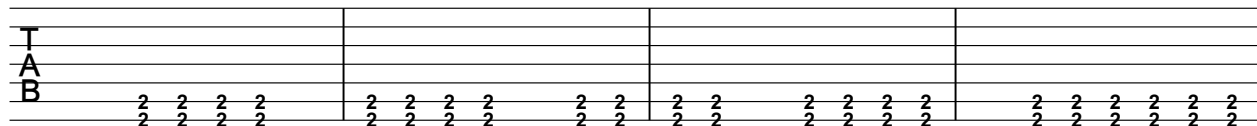
117



121



125



V.S.

T				
A				
B	2 2 2 2 2 2 2	2 2 2 2 2 2 2	2 2 2 2 2 2 2	2 2 2 2 2 2 2

133 ♪ = 120,000000

T				
A				
B	2 2 2 2 2 2 2	2 2 2 2 2 2 2	2 2 2 2 2 2 2	2 2 2 2 2 2 2

137 ♪ = 120,000000

T				
A				
B	2 2 2 2 2 2 2	2 2 2 2 2 2 2	2 2 2 2 2 2 2	2 2 2 2 2 2 2

141

T				
A				
B	2 2 2 2 2 2 2	2 2 2 2 2 2 2	2 2 2 2 2 2 2	2 2 2 2 2 2 2

146

T	2	3	3	3	3	2	3	3	3	3
A			2	2	0			2	2	
B					3					

153 ♪ = 150,000000

T				
A	0	0	0	0
B	3 3 3 3 3 3 3 3 3 3	2 0 0 0 2 0 0 0 2 0 0 0 2 0 0 0	2 2 2 2 2 2 2 2 2 2	2 2 2 2 2 2 2 2 2 2

156 ♪ = 150,000000

T				
A		0	0	0
B	2 2 2 2 2 2 2 2 2 2	3 3 3 3 3 3 3 3 3 3	2 0 0 0 2 0 0 0 2 0 0 0 2 0 0 0	2 2 2 2 2 2 2 2 2 2

159 ♪ = 150,000000

T				
A			0	0
B	2 2 2 2 2 2 2 2 2 2	2 2 2 2 2 2 2 2 2 2	3 3 3 3 3 3 3 3 3 3	3 3 3 3 3 3 3 3

162

T				
A				
B	2 0 0 0 2 0 0 0 2 0 0 0 2 0 0 0	2 2 2 2 2 2 2 2 2 2	2 2 2 2 2 2 2 2 2 2	2 2 2 2 2 2 2 2 2 2

165 ♪ = 150,000000

T				
A	0	0	0	0
B	3 3 3 3 3 3 3 3 3 3	2 0 0 0 2 0 0 0 2 0 0 0 2 0 0 0	2 2 2 2 2 2 2 2 2 2	2 2 2 2 2 2 2 2 2 2

168

♩ = 120,000 Track 1

♩ = 120,000

		2	3	3 3 3 3	
T					
A		0		2 2	0
B	2 2 2 2 2 2 2 2 2 2	3			3

174

♩ = 140,000 137

2	3	3 3 3 3	2 3 2 3 3 3	0 2 0 2 2 2
T				
A		2 2		
B				

179

♩ = 140,000 137

3 0 3 2 2 2	3 3 2 3 2	2 3 2 3 3 3	0 2 0 2 2 2
T			
A			
B			

183

♩ = 140,000 137

3 0 3 2 2 2	3 3 2 3 2	2 3 2 3 3 3	0 2 0 2 2 2
T			
A			
B			

187

♩ = 140,000 137

3 0 3 2 2 2	3 3 2 3 2	2 3 2 3 3 3	0 2 0 2 2 2
T			
A			
B			

191

♩ = 140,000 137

3 0 3 2 2 2	3 3 2 3 2	2 3 2 3 3 3	0 2 0 2 2 2
T			
A			
B			

195

♩ = 140,000 137

3 0 3 2 2 2	3 3 2 3 2	2 3 2 3 3 3	0 2 0 2 2 2
T			
A			
B			

199

♩ = 90,000 092

3 0 3 2 2 2	3 3 2 3 2	9 9	
T			
A		9 9	
B		3 6 6	

## Track 2

[illegible]

6

[illegible]

11

[illegible]

16

T A B																							
	0	2	3	2	0	0	2	3	0	0	2	3	2	0	2	3	2	0	0	2	3	2	0
	5	2	1	2	2	5	0	3	5	5	2	1	2	5	2	1	2	5	5	2	1	2	5

21

[illegible]

26

[illegible]

31

T						3													
A																			
B	3	2	0	2		0	4	3			2	2	0		3	2	0	2	
		2	2	2		3			3			2	2	2	2	2		2	

36

[illegible]

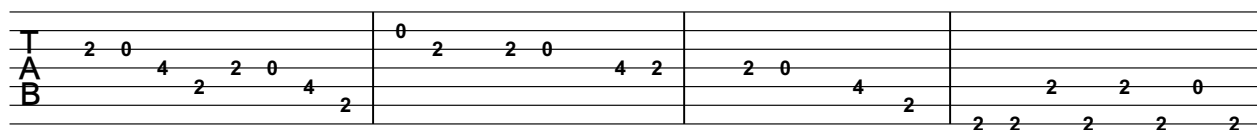
41

[illegible]

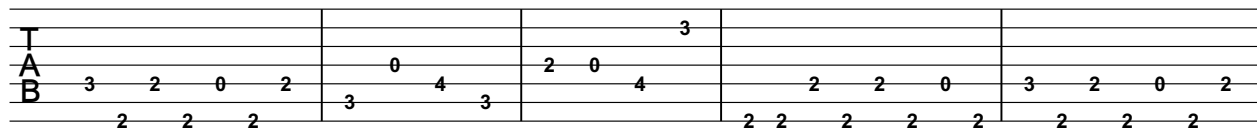
45

[illegible]

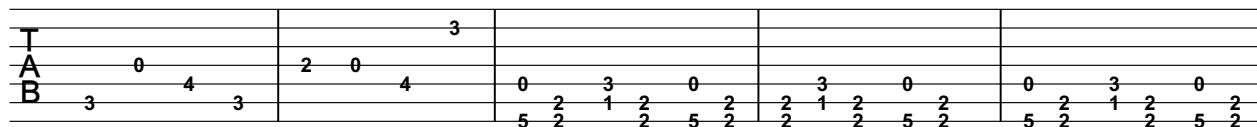
V.S.



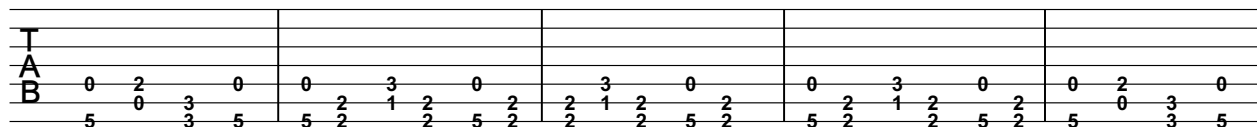
53



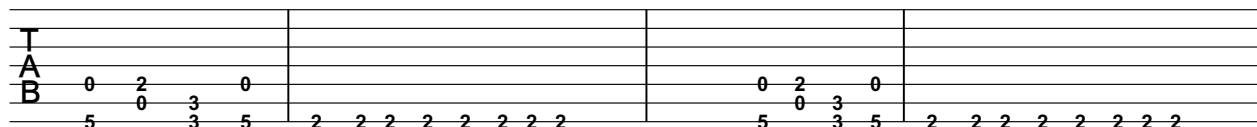
58



63



68 ♪ = 120,000000 ♪ = 120,000000



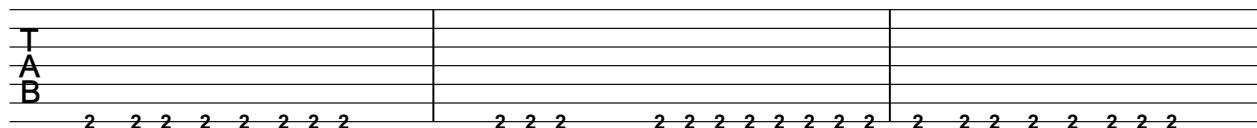
72

♪ = 120,000000

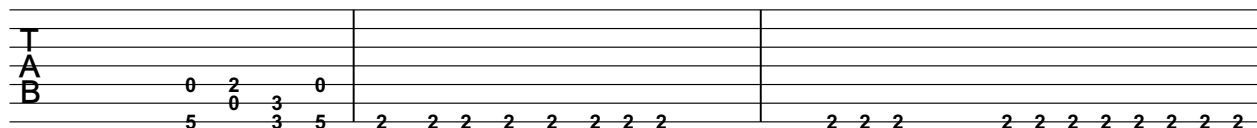


75

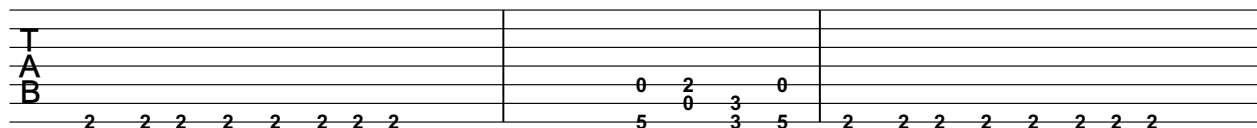
♪ = 120,000000



78

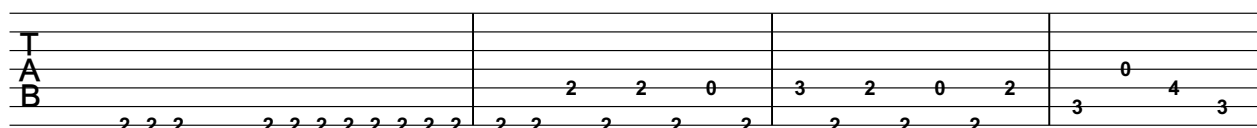


81 ♪ = 120,000000



84

♪ = 240,000000







133 ♪ = 120,000000

♩ = 120,000000

137 ♪ = 120,000000

♩ = 120,000000

141

146

$153 \text{ ♪} = 150,000,000$

156

♩ = 150,000,000

159

♩ = 150,000,000

162

$$165 \text{ ♪} = 150,000,000$$

♩ = 120,000000

[illegible]

T					
A			0		
B	2 2 2	2 2 2 2	3	2	2 2 2 2
	2	2	0	2	2

177 ♩ = 140,000137

T	2 3 2 3 3 3	0 2 0 2 2 2	3 0 3 2 2 2	3 3 2 2 3 2
A				
B				

181 ♩ = 140,000137

T	2 3 2 3 3 3	0 2 0 2 2 2	3 0 3 2 2 2	3 3 2 2 3 2
A				
B				

185 ♩ = 140,000137

T	2 3 2 3 3 3	0 2 0 2 2 2	3 0 3 2 2 2	3 3 2 2 3 2
A				
B				

189 ♩ = 140,000137

T	2 3 2 3 3 3	0 2 0 2 2 2	3 0 3 2 2 2	3 3 2 2 3 2
A				
B				

193 ♩ = 140,000137

T	2 3 2 3 3 3	0 2 0 2 2 2	3 0 3 2 2 2	3 3 2 2 3 2
A				
B				

197 ♩ = 140,000137

T	2 3 2 3 3 3	0 2 0 2 2 2	3 0 3 2 2 2
A			
B			

200 ♩ = 90,000092

T	3 3 2 3 2	9 9	
A		9 9	
B		6 6	