

Dir En Grey - Filth

♩ = 190,000290

Shinya

Guitar III

Kaoru

TAB

Die

TAB

Toshiya

Shinya

Shinya

Kaoru

TAB

Shinya

Kaoru

TAB

Shinya

Kaoru

TAB

16

Shinya

Kaoru

Die

Toshiya

19

Shinya

Kaoru

Die

Toshiya

22

Shinya

Kaoru

Die

Toshiya

33

Shinya

Guitar III

Die

Toshiya

36

Shinya

Guitar III

Die

Toshiya

39

Shinya

Guitar III

Die

Toshiya

42

Shinya

Guitar III

Die

Toshiya

45

Shinya

Die

Toshiya

48

Shinya

Kaoru

Die

Toshiya

60

Shinya

Guitar III

Die

Toshiya

63

Shinya

Guitar III

Die

Toshiya

66

Shinya

Guitar III

Die

Toshiya

69

Shinya

Guitar III

Die

Toshiya

72

Shinya

Guitar III

Kaoru

Die

Toshiya

75

Shinya

Kaoru

Die

Toshiya

87

Shinya

Kaoru

Die

Toshiya

90

Shinya

Kaoru

Die

Toshiya

93

Shinya

Kaoru

Die

Toshiya

104

Shinya

Kaoru

Die

Toshiya

106

Shinya

Guitar III

Kaoru

Die

Toshiya

108

Shinya

Guitar III

Kaoru

Die

Toshiya

117

Shinya

Guitar III

Kaoru

Die

Toshiya

Measure	117	118	119
Shinya	A4, B4, C5, B4, A4, G4, F4, E4, D4, C4	F4, E4, D4, C4, B3, A3, G3, F3, E3, D3	C4, B3, A3, G3, F3, E3, D3, C3, B2, A2, G2, F2, E2, D2, C2
Guitar III	(b) 0, 0, 7, 5	0, 0, 0, 0, 0, 0, 0, 0, 0, 0	0, 0, 0, 0, 0, 0, 0, 0, 0, 0
Kaoru	2 2 0 0 7 5	2 2 2 0 0 0 7 5	2 2 2 0 0 1 0 0 0 7 5
Die	2 2 0 0 5 6 0 0	2 2 0 0 5 6 0 1 0	2 2 0 0 5 6 0 0
Toshiya	C2, D2, E2, F2, G2, A2, B2, C3, D3, E3, F3, G3, A3, B3, C4	D3, E3, F3, G3, A3, B3, C4, D4, E4, F4, G4, A4, B4, C5, B4, A4, G4, F4, E4, D4, C4	D4, E4, F4, G4, A4, B4, C5, B4, A4, G4, F4, E4, D4, C4, B3, A3, G3, F3, E3, D3, C3, B2, A2, G2, F2, E2, D2, C2

120

Shinya

Guitar III

Kaoru

Die

Toshiya

Measure	120	121	122
Shinya	F4, E4, D4, C4, B3, A3, G3, F3, E3, D3	C4, B3, A3, G3, F3, E3, D3, C3, B2, A2, G2, F2, E2, D2, C2	C4, B3, A3, G3, F3, E3, D3, C3, B2, A2, G2, F2, E2, D2, C2
Guitar III	0, 0, 0, 0, 0, 0, 0, 0, 0, 0	0, 0, 0, 0, 0, 0, 0, 0, 0, 0	0, 0, 0, 0, 0, 0, 0, 0, 0, 0
Kaoru	2 2 0 0 7 5	2 2 2 0 0 1 0 0 0 7 5	2 2 2 0 0 7 5 2 2 2 0 0 0
Die	2 2 0 0 5 6 0 2 1 0	2 2 0 0 5 6 0 2 0	2 2 0 0 5 6 0
Toshiya	C2, D2, E2, F2, G2, A2, B2, C3, D3, E3, F3, G3, A3, B3, C4	D3, E3, F3, G3, A3, B3, C4, D4, E4, F4, G4, A4, B4, C5, B4, A4, G4, F4, E4, D4, C4	D4, E4, F4, G4, A4, B4, C5, B4, A4, G4, F4, E4, D4, C4, B3, A3, G3, F3, E3, D3, C3, B2, A2, G2, F2, E2, D2, C2

123

Shinya

Guitar III

Kaoru

T															
A															
B	2		2	2	2	2		2	2	2	2	2	2	2	
	0	7	0	1	0	0	7	0	0	0	0	0	0	1	0
	0	3	5	3	6	6	6	5	12	12	12	0	0	3	6

Die

T															
A															
B															

Toshiya

126

Shinya

Kaoru

T																
A																
B	2		2	2	2	2		2	2	2	2	2	2	2		
	0	7	0	0	0	0	0	0	1	0	0	0	7	0	0	
	6	6	5	1	1	3	0	0	0	6	6	5	12	12	12	0

Die

T															
A															
B															

Toshiya

129

Shinya

Kaoru

T															
A															
B	2		2	2	2	2		3	3	2	2	2	2	2	
	0	7	0	1	0	0		1	1	0	0	7	0	1	0
	0	3	5	3	6	6	6	3	3	1	0	5	0	6	6

Die

T															
A															
B															

Toshiya

140

Shinya

Kaoru

Die

Toshiya

143

Shinya

Kaoru

Die

Toshiya

146

Shinya

Kaoru

Die

Toshiya

181

Shinya

Kaoru

Die

Toshiya

185

Shinya

Kaoru

Die

Toshiya

189

Shinya

Kaoru

Die

Toshiya

205

Shinya

Kaoru

Die

Toshiya

209

Shinya

Kaoru

Die

Toshiya

213

Shinya

Kaoru

Die

Toshiya

217

Shinya

Kaoru

Die

Toshiya

220

Shinya

Kaoru

Die

Toshiya

♩ = 190,000290

5

9

13

17

21

25

29

33

37

Detailed description: This is a guitar score for the song 'Dir En Grey - Filth' by Shinya. The score is written for a single guitar in 4/4 time. It begins with a tempo marking of 190,000290. The music consists of ten staves of notation, each starting with a measure number (5, 9, 13, 17, 21, 25, 29, 33, 37). The notation includes a variety of note values such as quarter notes, eighth notes, and sixteenth notes, along with rests and dynamic markings like accents and slurs. A key change to 6/4 time is indicated at measure 29. The score concludes with a double bar line at the end of the final staff.

41

45

49

53

57

60

64

68

72

76

80

84

88

92

96

100

104

107

111

116

V.S.

121



Musical notation for measure 121, featuring a treble clef, a key signature of one sharp (F#), and a 7/8 time signature. The notation includes a series of eighth notes with stems pointing down, a slur over a group of notes, and a star symbol above a note.

125



Musical notation for measure 125, featuring a treble clef, a key signature of one sharp (F#), and a 7/8 time signature. The notation includes a series of eighth notes with stems pointing down.

129



Musical notation for measure 129, featuring a treble clef, a key signature of one sharp (F#), and a 7/8 time signature. The notation includes a series of eighth notes with stems pointing down.

133



Musical notation for measure 133, featuring a treble clef, a key signature of one sharp (F#), and a 7/8 time signature. The notation includes a series of eighth notes with stems pointing down.

137



Musical notation for measure 137, featuring a treble clef, a key signature of one sharp (F#), and a 7/8 time signature. The notation includes a series of eighth notes with stems pointing down, a slur, and a star symbol above a note.

141



Musical notation for measure 141, featuring a treble clef, a key signature of one sharp (F#), and a 7/8 time signature. The notation includes a series of eighth notes with stems pointing down.

145



Musical notation for measure 145, featuring a treble clef, a key signature of one sharp (F#), and a 7/8 time signature. The notation includes a series of eighth notes with stems pointing down, a slur, and a star symbol above a note.

149



Musical notation for measure 149, featuring a treble clef, a key signature of one sharp (F#), and a 7/8 time signature. The notation includes a series of eighth notes with stems pointing down, a slur, and a star symbol above a note.

153



Musical notation for measure 153, featuring a treble clef, a key signature of one sharp (F#), and a 7/8 time signature. The notation includes a series of eighth notes with stems pointing down.

157



Musical notation for measure 157, featuring a treble clef, a key signature of one sharp (F#), and a 7/8 time signature. The notation includes a series of eighth notes with stems pointing down, a slur, and a star symbol above a note.

161

165

169

173

177

181

186

191

196

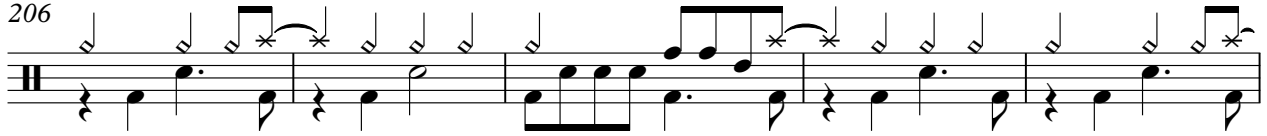
201

V.S.

6

Shinya

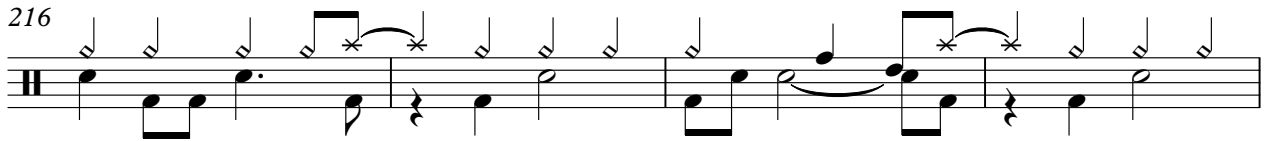
206



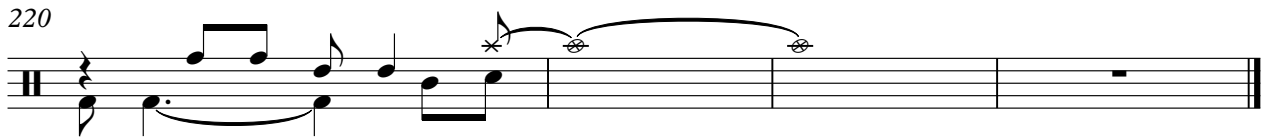
211



216



220



Guitar III

Dir En Grey - Filth

♩ = 190,000290

31

37

14

57

65

74

32

110

117

122

99

Dir En Grey - Filth

Kaoru

♩ = 190,000290

8

Tablature system 1 (measures 1-4):

Strings: E, B, G, D, A, E, A

Measure 1: Bar line, then a thick black bar across the strings.

Measure 2: 7 0 7 7 7 2 2

Measure 3: 5 5 5 5 5 0 0

Measure 4: 7 7 7 2 2 7 5

12

Tablature system 2 (measures 5-8):

Measure 5: 7 0 7 7 7 2 2

Measure 6: 5 5 5 5 5 0 0

Measure 7: 7 7 7 2 2 7 5

Measure 8: 7 0 7 7 7 2 2

16

Tablature system 3 (measures 9-12):

Measure 9: 7 2 3 0 2 2

Measure 10: 5 5 5 3 0 5

Measure 11: 2 2 2 1 2 1

Measure 12: 5 0 0 0 2 2

20

Tablature system 4 (measures 13-16):

Measure 13: 2 1 0 0 2 2

Measure 14: 5 0 0 0 0 5

Measure 15: 2 2 2 1 2 1

Measure 16: 5 0 0 0 2 2

24

Tablature system 5 (measures 17-20):

Measure 17: 2 2 2 2 2 2

Measure 18: 1 2 1 0 0 5

Measure 19: 2 2 2 1 2 1

Measure 20: 5 0 0 0 2 2

28

Tablature system 6 (measures 21-24):

Measure 21: 2 1 0 0 2 2

Measure 22: 5 0 0 0 0 5

Measure 23: 2 2 2 1 2 1

Measure 24: 2 2 3 2 3 2

32

16

Tablature system 7 (measures 25-28):

Measure 25: 2 2 2 2 2 2

Measure 26: 0 1 0 0 0 5

Measure 27: Bar line, then a thick black bar across the strings.

Measure 28: 2 2 3 2 2 0

51

Tablature system 8 (measures 29-32):

Measure 29: 2 3 2 2 2 2

Measure 30: 0 5 1 0 0 5

Measure 31: 2 3 2 2 2 2

Measure 32: 0 5 1 0 0 5

55

15

Tablature system 9 (measures 33-36):

Measure 33: 2 3 2 2 2 2

Measure 34: 0 5 1 0 0 5

Measure 35: 2 3 2 2 2 2

Measure 36: 0 5 1 0 0 5

T								
A	2	2	2	0	0	3	3	3
B	0	0	0	0	0	1	1	1
			5	5	5	5	1	1

180

T								
A		0		2		0		2
B								
	5	5	5	5	5	5	5	5

185

T								
A		0		2		0		2
B								
	5	5	5	5	5	5	5	5

190

T								
A		2		0		2		0
B								
	5	5	5	5	5	5	5	5

195

T								
A		0		2		0		2
B								
	5	5	5	5	5	5	5	5

200

T								
A		2		0		2		0
B								
	5	5	5	5	5	5	5	5

205

T								
A		0		2		0		2
B								
	5	5	5	5	5	5	5	5

210

T								
A		2		0		2		0
B								
	5	5	5	5	5	5	5	5

215

T								
A		0		2		0		2
B								
	5	5	5	5	5	5	5	5

219

T								
A		0		2				
B								
	5	5	5	5	5	5		

	0	0	0	0	0	0	0	0	0	7	7	1	2	0	1	2	8	8	8	8	8	8	8	8	8
T	3	3	3	3	3	3	3	3	3	2							6	6	6	6	6	6	6	6	6
A	2	2	2	2	2	2	2	2	2	2	2	2	2	2	2	2	5	5	5	5	5	5	5	5	5
B										3															

91

	8	8	8	8	8	8	8	8	8	8	8	8	8	8	8	8	8	8	8	8	8	8	8	8	8
T	5	5	5	5	5	5	5	5	5	5	5	5	5	5	5	5	5	5	5	5	5	5	5	5	5
A																									
B																									

95

	8	8	8	8	8	8	8	8	8	8	8	8	8	8	8	8	8	8	8	8	8	8	8	8	8
T	5	5	5	5	5	5	5	5	5	8	8	8	8	8	8	8	8	8	8	8	8	8	8	8	8
A	7	7	7	7	7	7	7	7	10	10	10	10	10	10	10	10	10	10	10	10	10	10	10	10	10
B																									

98

	8	8	8	8	8	8	8	8	8	8	8	8	8	8	8	8	8	8	8	8	8	8	8	8	8
T	6	6	6	6	6	6	6	6	6	6	6	6	6	6	5	5	5	5	5	5	5	5	5	5	5
A	5	5	5	5	5	5	5	5	5	5	5	5	5	5	5	5	5	5	5	5	5	5	5	5	5
B																									

102

	8	8	8	8	8	8	8	8	8	8	8	8	8	8	8	8	8	8	8	8	8	8	8	8	8
T	5	5	5	5	5	5	5	5	5	5	5	5	5	5	5	5	5	5	5	5	5	5	5	5	5
A	7	7	7	7	7	7	7	7	7	7	7	7	7	7	7	7	7	7	7	7	7	7	7	7	7
B																									

105

	8	8	8	8	8	8	8	8	8																
T	8	8	8	8	8	8	8	8	8																
A	10	10	10	10	10	10	10	10	10																
B																									

109

T																									
A																									
B	2	2			2	2	2		2	2		2	2		2	2		2	2		2	2		2	2

113

T																									
A																									
B	2	2			2	2	2		2	2		2	2		2	2		2	2		2	2		2	2

117

T																									
A																									
B	2	2			2	2	2		2	2		2	2		2	2		2	2		2	2		2	2

121

T																									
A																									
B	2	2			2	2	2		2	2		2	2		2	2		2	2		2	2		2	2

V.S.

4 125

Die

0	6	6 6	1 1 3	0	0	6	6 6	12 12 12	0
0 3 3 6	6 6	1 1 3	0	0 3 3 6	6 6	11 11 11	0		
2 2 2				2 2					
T	A	B							

129

0	6	6 6	3 3 1	0	0 6	6 6	12 12 12	0	0 6
0 3 3 6	6 6	3 3 1	0	0 0 6	6 6	11 11 11	0	0 3 3 6	
2 2 2			2					2 2 2	
T	A	B							

134

6 6	1 1 3	0	0	6	6 6	12 12 12	0	0	6
6 6	1 1 3	0	0 3 3 6	6 6	11 11 11	0	0 3 3 6		
			2 2					2 2	
T	A	B							

138

6 6	3 3 1	0	0 0 0 0 0 0	0	0	0	0	0	0
6 6	3 3 1	0	0 0 0 0 0 0	0	2 3	3 3 3 3 3	0	0	
			2	2 2 2 2 2 2	3	2	2 2 2 2 2 2	2 3 2	
T	A	B							

141

0	0	0	0	0	0	0	0	0	0
2 2 2 2 2 2	2 3 2	3 3 3 3 3	2 2 2 2 2 2	2 3 2	2 2 2 2 2 2	3 2	2 2 2 2 2 2	2 3 2	2 3 2
	3			3				3	
T	A	B							

144

3 3 3 3 3	0	0	0 0 0 0 0 0	0	7	7 1 2	0	1 2	8	8 8 8 8 8 8 8 8
2 2 2 2 2 2	2 3 2	2 2 2 2 2 2	2 2 2 2 2 2	2 3	2	0	6	5	6	6 6 6 6 6 6 6 6
	3			3						5 5 5 5 5 5 5 5
T	A	B								

148

8 8 8 8 8 8 8 8	8 8 8 8 8 8 8 8	8 8 8 8 8 8 8 8	8 8 8 8 8 8 8 8
6 6 6 6 6 6 6 6	5 5 5 5 5 5 5 5	5 5 5 5 5 5 5 5	5 5 5 5 5 5 5 5
5 5 5 5 5 5 5 5	5 5 5 5 5 5 5 5	5 5 5 5 5 5 5 5	5 5 5 5 5 5 5 5
T	A	B	

152

8 8 8 8 8 8 8 8	8 8 8 8 8 8 8 8	8 8 8 8 8 8 8 8	8 8 8 8 8 8 8 8
5 5 5 5 5 5 5 5	8 8 8 8 8 8 8 8	8 8 8 8 8 8 8 8	8 8 8 8 8 8 8 8
7 7 7 7 7 7 7 7	10 10 10 10 10 10 10 10	10 10 10 10 10 10 10 10	10 10 10 10 10 10 10 10
T	A	B	

155

8 8 8 8 8 8 8 8	8 8 8 8 8 8 8 8	8 8 8 8 8 8 8 8	8 8 8 8 8 8 8 8
6 6 6 6 6 6 6 6	6 6 6 6 6 6 6 6	5 5 5 5 5 5 5 5	5 5 5 5 5 5 5 5
5 5 5 5 5 5 5 5	5 5 5 5 5 5 5 5	5 5 5 5 5 5 5 5	5 5 5 5 5 5 5 5
T	A	B	

159

8 8 8 8 8 8 8 8	8 8 8 8 8 8 8 8	8 8 8 8 8 8 8 8	8 8 8 8 8 8 8 8
5 5 5 5 5 5 5 5	5 5 5 5 5 5 5 5	5 5 5 5 5 5 5 5	8 8 8 8 8 8 8 8
7 7 7 7 7 7 7 7	7 7 7 7 7 7 7 7	7 7 7 7 7 7 7 7	10 10 10 10 10 10 10 10
T	A	B	

6 209

Die

A guitar tab for exercise 209. The top staff contains the following sequence of notes: 3, 3, 5, 5, 5, 8, 8, 0, 8, 1, 1, 0, 1, 3, 3, 3, 3, 5, 3. The notes are grouped into six measures: (3, 3, 5), (5, 5, 8), (8, 0, 8), (1, 1, 0), (1, 3, 3), and (3, 3, 5, 3). The letters T, A, and B are written vertically on the left side of the first three lines of the staff.

215

A guitar tab for exercise 215. The top staff contains the following sequence of notes: 3, 3, 3, 1, 5, 3, 3, 3, 3, 1, 8, 3. The notes are grouped into four measures: (3, 3, 3), (1, 5, 3), (3, 3, 3), and (1, 8, 3). The letters T, A, and B are written vertically on the left side of the first three lines of the staff.

219

A guitar tab for exercise 219. The top staff contains the following sequence of notes: 3, 1, 0, 5, 8, 8, 8. The notes are grouped into four measures: (3, 1), (0, 5, 8), (8, 8), and (8). The letters T, A, and B are written vertically on the left side of the first three lines of the staff.

55



130



134



138



141



145



149



153



157



161



165



169



173



177



182



188



193



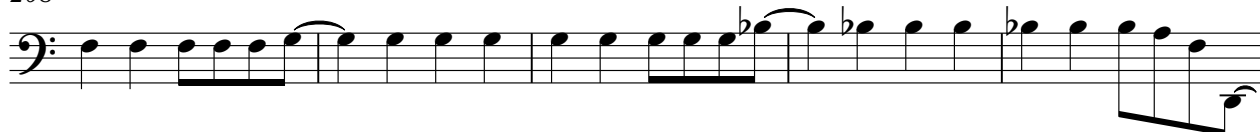
198



203



208



213



V.S.

6

Toshiya

218

