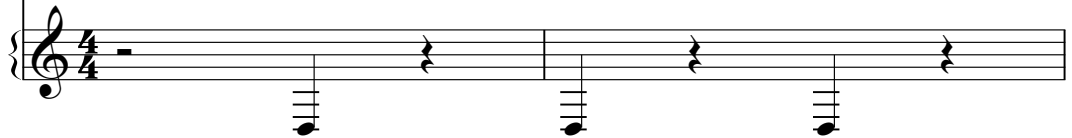


♩ = 120,000 45

Lead 1 (Square) 

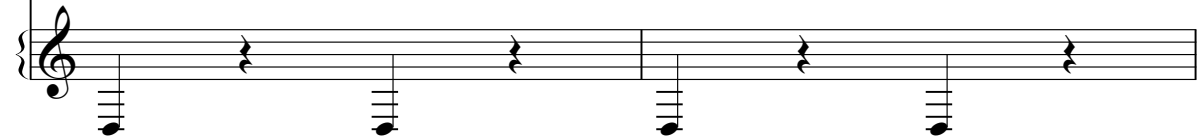
Lead 1 (Square) 


♩ = 120,000 45

Lead 1 (Square) 

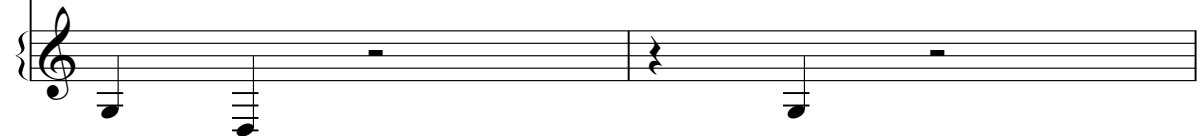
Lead 1 

Lead 1 

Lead 1 

Lead 1 

Lead 1 

Lead 1 

7

Lead 1



9

Lead 1



11

Lead 1



13

Lead 1

Lead 1

Lead 1

This system contains measures 13 and 14. It features three staves. The top two staves are labeled 'Lead 1'. The first staff has a treble clef and a key signature of one flat. The second staff has a treble clef and a key signature of one sharp. The third staff has a treble clef and contains a sequence of chords: Bb2, C2, D2, Eb2, F#2, G2, A2.

15

Lead 1

Lead 1

Lead 1

This system contains measures 15 and 16. It features three staves, all labeled 'Lead 1'. The top two staves have treble clefs and contain melodic lines with triplets. The third staff has a treble clef and contains a sequence of chords: Bb2, C2, D2, Eb2, F#2, G2, A2.

17

Lead 1

Lead 1

Lead 1

This system contains measures 17 and 18. It features three staves, all labeled 'Lead 1'. The top two staves have treble clefs and contain melodic lines with triplets. The third staff has a treble clef and contains a sequence of chords: Bb2, C2, D2, Eb2, F#2, G2, A2.

19

Lead 1

Lead 1

Lead 1

21

Lead 1

Lead 1

Lead 1

Lead 1

23

Lead 1

Lead 1

Lead 1

Lead 1

25

Lead 1

Lead 1

Lead 1

27

Lead 1

Lead 1

Lead 1

29

Lead 1

Lead 1

Lead 1

31

Lead 1

Musical notation for measures 31-32, Lead 1. The first staff shows a melodic line with a triplet of eighth notes. The second staff shows a more complex melodic line with a triplet of eighth notes. The third staff shows a bass line with a single note and rests.

33

Lead 1

Musical notation for measures 33-34, Lead 1. The first staff shows a melodic line with a triplet of eighth notes. The second staff shows a melodic line with a triplet of eighth notes. The third staff shows a bass line with a single note and rests.

35

Lead 1

Musical notation for measures 35-36, Lead 1. The first staff shows a melodic line with a triplet of eighth notes. The second staff shows a melodic line with a triplet of eighth notes. The third staff shows a bass line with a single note and rests.

Lead 1 (Square)

♩ = 120

3

5

8

10

13

16

18

20

23

Detailed description: The musical score is written in 4/4 time with a tempo of 120 beats per minute. It consists of ten staves of music. The first staff begins with a treble clef, a key signature of one flat (B-flat), and a 4/4 time signature. The music is primarily composed of eighth and sixteenth notes, often beamed together in groups. There are several measures with rests, and some notes are marked with sharp (#) and flat (b) accidentals. The piece concludes with a double bar line at the end of the tenth staff.

V.S.

Lead 1 (Square)

25



27



31

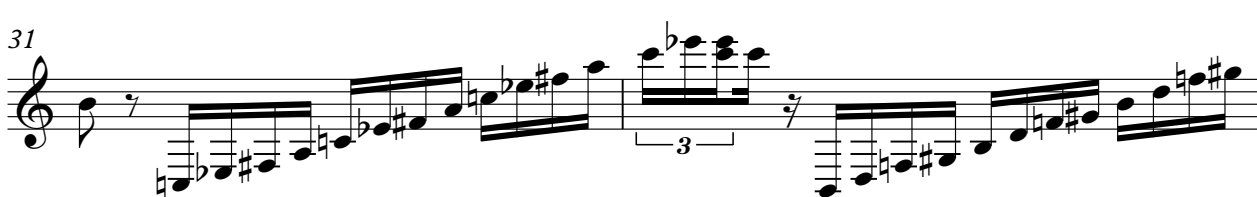
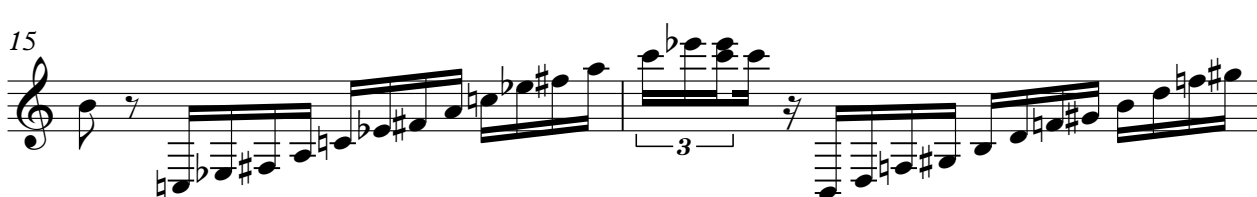


34



Lead 1 (Square)

♩ = 120,000000 45



V.S.

2

Lead 1 (Square)

33

A musical score for a guitar lead. It starts with a treble clef and a key signature of one sharp (F#). The first measure contains a triplet of eighth notes. The following measures contain a sequence of eighth and quarter notes, ending with a whole rest in the final measure. The notation includes a treble clef, a key signature of one sharp, and various note values and rests.

Lead 1 (Square)

♩ = 120, 0, 0, 0, 0, 0, 0, 0, 0, 0, 5

7

13

18

24

29

32