

Johnny Mathis - Chances Are

0.0"
1.1,00

♩ = 80,000000

Percussion

Kora

Fretless Electric Bass

Synth Voice

Synth Strings

♩ = 80,000000

2

Perc.

Kora

E. Bass

Syn. Voice

Syn. Str.

4

Perc.

Kora

E. Bass

Syn. Voice

Syn. Str.

6

Perc.

Kora

E. Bass

Syn. Voice

Syn. Str.

8

Perc.

Kora

E. Bass

Syn. Voice

Syn. Str.

10

Perc.

Kora

E. Bass

Syn. Voice

Syn. Str.

12

Perc.

Kora

E. Bass

Syn. Voice

Syn. Str.

14

Perc.

Kora

E. Bass

Syn. Voice

Syn. Str.

16

Perc.

Kora

E. Bass

Syn. Voice

Syn. Str.

18

Perc.

Kora

E. Bass

Syn. Voice

Syn. Str.

20

Perc.

Kora

E. Bass

Syn. Voice

Syn. Str.

22

Perc.

Kora

E. Bass

Syn. Voice

Syn. Str.

23

Perc.

Kora

E. Bass

Syn. Voice

Syn. Str.

25

Perc.

Kora

E. Bass

Syn. Voice

Syn. Str.

27

Perc. Kora E. Bass Syn. Voice Syn. Str.

Detailed description: This system of music covers measures 27 and 28. The Percussion part features a complex rhythmic pattern with 'x' marks above the staff. The Kora part has a melodic line with a triplet in measure 28. The E. Bass part provides a harmonic foundation with a few notes. The Syn. Voice part has a melodic line with a fermata in measure 28. The Syn. Str. part has a few notes with a sharp sign.

29

Perc. Kora E. Bass Syn. Voice Syn. Str.

Detailed description: This system of music covers measures 29 and 30. The Percussion part continues with its rhythmic pattern. The Kora part has a melodic line with a triplet in measure 30. The E. Bass part has a melodic line with a fermata in measure 30. The Syn. Voice part has a melodic line with a triplet in measure 30. The Syn. Str. part has a few notes with a sharp sign.

31

Perc.

Kora

E. Bass

Syn. Voice

Syn. Str.

33

Perc.

Kora

E. Bass

Syn. Voice

Syn. Str.

35

Perc.

Kora

E. Bass

Syn. Voice

Syn. Str.

36

Perc.

Kora

E. Bass

Syn. Voice

Syn. Str.

38

Perc.

Kora

E. Bass

Syn. Voice

Syn. Str.

40

Perc.

Kora

E. Bass

Syn. Voice

Syn. Str.

42

Perc.

Kora

E. Bass

Syn. Voice

Syn. Str.

44

Perc.

Kora

E. Bass

Syn. Voice

Syn. Str.

46



Perc.

Kora

E. Bass

Syn. Voice

Syn. Str.

48



Perc.

Kora

E. Bass

Syn. Voice

Syn. Str.

50

Perc. Kora E. Bass Syn. Voice Syn. Str.

Detailed description: This system of music covers measures 50 and 51. The Percussion part features a complex rhythmic pattern with eighth and sixteenth notes, including accents and 'x' marks above the staff. The Kora part consists of a melodic line with eighth and sixteenth notes, some with grace notes. The Electric Bass part provides a harmonic foundation with a mix of eighth and sixteenth notes. The Synthesizer Voice part has a simple melodic line with a few notes. The Synthesizer Strings part is represented by a sustained chord with a long horizontal line above it, indicating it is held throughout the measures.

52

Perc. Kora E. Bass Syn. Voice Syn. Str.

Detailed description: This system of music covers measures 52 and 53. The Percussion part continues with a similar rhythmic pattern to the previous system. The Kora part has a melodic line with some grace notes and rests. The Electric Bass part continues with a rhythmic pattern of eighth and sixteenth notes. The Synthesizer Voice part has a melodic line with a few notes. The Synthesizer Strings part is represented by a sustained chord with a long horizontal line above it, indicating it is held throughout the measures.

54

Perc.

Kora

E. Bass

Syn. Voice

Syn. Str.

56

Perc.

Kora

E. Bass

Syn. Voice

Syn. Str.

58

Perc.

Kora

E. Bass

Syn. Voice

Syn. Str.

60

Perc.

Kora

E. Bass

Syn. Voice

Syn. Str.

62

Perc. Kora E. Bass Syn. Voice Syn. Str.

Detailed description: This system covers measures 62 and 63. The Percussion part features a complex rhythmic pattern with 'x' marks above the staff. The Kora part has a melodic line with a key signature of one flat and various ornaments. The E. Bass part provides a harmonic foundation with a mix of eighth and sixteenth notes. The Syn. Voice part has a simple melodic line. The Syn. Str. part shows two chords: a D major chord in the first measure and a D minor chord in the second measure.

64

Perc. Kora E. Bass Syn. Voice Syn. Str.

Detailed description: This system covers measures 64 and 65. The Percussion part continues with its rhythmic pattern. The Kora part features a melodic line with a key signature of one sharp and a triplet in measure 64. The E. Bass part has a simple harmonic line. The Syn. Voice part has a long, sustained note in measure 64 followed by a melodic line in measure 65. The Syn. Str. part shows three chords: a D major chord in measure 64, a D major chord with a sharp sign in measure 65, and a D major chord with a sharp sign in measure 65.

66

Perc.

Kora

E. Bass

Syn. Voice

Syn. Str.

68

Perc.

Kora

E. Bass

Syn. Voice

Syn. Str.

69 Perc. Kora E. Bass Syn. Voice Syn. Str.

This musical score page, numbered 69, features five staves. The Percussion staff (top) shows a complex rhythmic pattern with 'x' marks above notes and various rhythmic values. The Kora staff uses a treble clef and contains dense, multi-measure chords. The Electric Bass staff (E. Bass) features a single note with a long, sweeping slur. The Synthesizer Voice staff (Syn. Voice) has two notes with a long slur. The Synthesizer Strings staff (Syn. Str.) shows three notes with a long slur. The page number 19 is located in the top right corner.

Johnny Mathis - Chances Are

Percussion

$\text{♩} = 80,000000$

3

5

7

10

12

14

16

19

22

V.S.

24

Measure 24: A two-staff musical system. The top staff contains a series of 'x' marks, indicating a rhythmic pattern. The bottom staff contains a complex rhythmic pattern with eighth and sixteenth notes, some with stems pointing up and some down, and some with diamond-shaped flags.

27

Measure 27: A two-staff musical system. The top staff contains a series of 'x' marks. The bottom staff contains a complex rhythmic pattern with eighth and sixteenth notes, some with stems pointing up and some down, and some with diamond-shaped flags.

30

Measure 30: A two-staff musical system. The top staff contains a series of 'x' marks. The bottom staff contains a complex rhythmic pattern with eighth and sixteenth notes, some with stems pointing up and some down, and some with diamond-shaped flags.

33

Measure 33: A two-staff musical system. The top staff contains a series of 'x' marks. The bottom staff contains a complex rhythmic pattern with eighth and sixteenth notes, some with stems pointing up and some down, and some with diamond-shaped flags. A small asterisk and a note with a stem pointing up are present at the beginning of the measure.

35

Measure 35: A two-staff musical system. The top staff contains a series of 'x' marks. The bottom staff contains a complex rhythmic pattern with eighth and sixteenth notes, some with stems pointing up and some down, and some with diamond-shaped flags.

37

Measure 37: A two-staff musical system. The top staff contains a series of 'x' marks. The bottom staff contains a complex rhythmic pattern with eighth and sixteenth notes, some with stems pointing up and some down, and some with diamond-shaped flags.

39

Measure 39: A two-staff musical system. The top staff contains a series of 'x' marks. The bottom staff contains a complex rhythmic pattern with eighth and sixteenth notes, some with stems pointing up and some down, and some with diamond-shaped flags.

41

Measure 41: A two-staff musical system. The top staff contains a series of 'x' marks. The bottom staff contains a complex rhythmic pattern with eighth and sixteenth notes, some with stems pointing up and some down, and some with diamond-shaped flags.

43

Measure 43: A two-staff musical system. The top staff contains a series of 'x' marks. The bottom staff contains a complex rhythmic pattern with eighth and sixteenth notes, some with stems pointing up and some down, and some with diamond-shaped flags.

45

Measure 45: A two-staff musical system. The top staff contains a series of 'x' marks. The bottom staff contains a complex rhythmic pattern with eighth and sixteenth notes, some with stems pointing up and some down, and some with diamond-shaped flags.

47

Musical notation for measure 47, featuring a complex rhythmic pattern with multiple beams and accents.

50

Musical notation for measure 50, starting with a star symbol and a quarter note, followed by a complex rhythmic pattern.

53

Musical notation for measure 53, featuring a complex rhythmic pattern with multiple beams and accents.

55

Musical notation for measure 55, featuring a complex rhythmic pattern with multiple beams and accents.

58

Musical notation for measure 58, featuring a complex rhythmic pattern with multiple beams and accents.

61

Musical notation for measure 61, featuring a complex rhythmic pattern with multiple beams and accents.

64

Musical notation for measure 64, featuring a complex rhythmic pattern with multiple beams and accents.

67

Musical notation for measure 67, featuring a complex rhythmic pattern with multiple beams and accents.

69

Musical notation for measure 69, featuring a complex rhythmic pattern with multiple beams and accents.

Johnny Mathis - Chances Are

Kora

♩ = 80,000000

3

6

9

12

15

17

20

22

23

Musical score for Kora, measures 26-50. The score is written in a single system with a treble clef and a key signature of one flat (B-flat). The music features a complex rhythmic pattern with many beamed notes and rests. Measure 26 includes a triplet of eighth notes. Measure 35 also features a triplet of eighth notes. The notation includes various note values, rests, and dynamic markings such as accents and slurs. The piece concludes at measure 50.

52

55

58

60

62

64

67

69

Johnny Mathis - Chances Are

Fretless Electric Bass

♩ = 80,000000

A musical staff in bass clef, 4/4 time, showing the first five measures of the piece. The key signature has one flat (B-flat). The notes are: G2 (half), F2 (half), E2 (quarter), D2 (quarter), C2 (quarter), B1 (quarter), A1 (quarter), G1 (half).

6

A musical staff in bass clef, 4/4 time, showing measures 6-10. The notes are: G1 (half), F1 (half), E1 (quarter), D1 (quarter), C1 (quarter), B0 (quarter), A0 (quarter), G0 (half).

11

A musical staff in bass clef, 4/4 time, showing measures 11-16. The notes are: G0 (half), F0 (half), E0 (quarter), D0 (quarter), C0 (quarter), B-1 (quarter), A-1 (quarter), G-1 (half).

17

A musical staff in bass clef, 4/4 time, showing measures 17-21. The notes are: G-1 (half), F-1 (half), E-1 (quarter), D-1 (quarter), C-1 (quarter), B-2 (quarter), A-2 (quarter), G-2 (half).

22

A musical staff in bass clef, 4/4 time, showing measures 22-26. The notes are: G-2 (half), F-2 (half), E-2 (quarter), D-2 (quarter), C-2 (quarter), B-3 (quarter), A-3 (quarter), G-3 (half).

27

A musical staff in bass clef, 4/4 time, showing measures 27-31. The notes are: G-3 (half), F-3 (half), E-3 (quarter), D-3 (quarter), C-3 (quarter), B-4 (quarter), A-4 (quarter), G-4 (half).

32

A musical staff in bass clef, 4/4 time, showing measures 32-36. The notes are: G-4 (half), F-4 (half), E-4 (quarter), D-4 (quarter), C-4 (quarter), B-5 (quarter), A-5 (quarter), G-5 (half).

37

A musical staff in bass clef, 4/4 time, showing measures 37-41. The notes are: G-5 (half), F-5 (half), E-5 (quarter), D-5 (quarter), C-5 (quarter), B-6 (quarter), A-6 (quarter), G-6 (half).

42

A musical staff in bass clef, 4/4 time, showing measures 42-46. The notes are: G-6 (half), F-6 (half), E-6 (quarter), D-6 (quarter), C-6 (quarter), B-7 (quarter), A-7 (quarter), G-7 (half).

47

A musical staff in bass clef, 4/4 time, showing measures 47-51. The notes are: G-7 (half), F-7 (half), E-7 (quarter), D-7 (quarter), C-7 (quarter), B-8 (quarter), A-8 (quarter), G-8 (half).

V.S.

2

Fretless Electric Bass

51



56



62



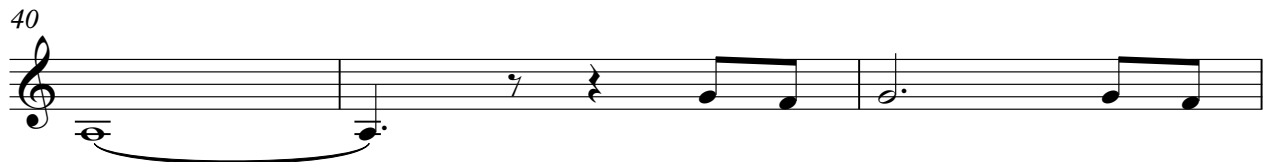
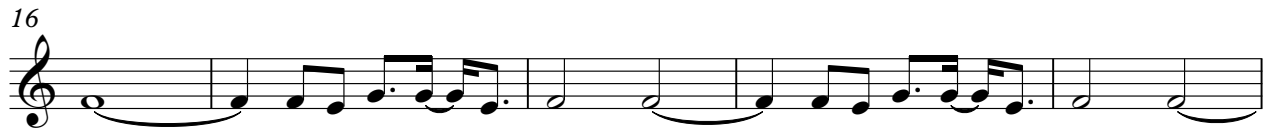
67



Johnny Mathis - Chances Are

Synth Voice

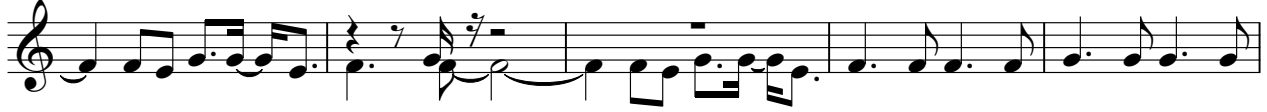
♩ = 80,000000



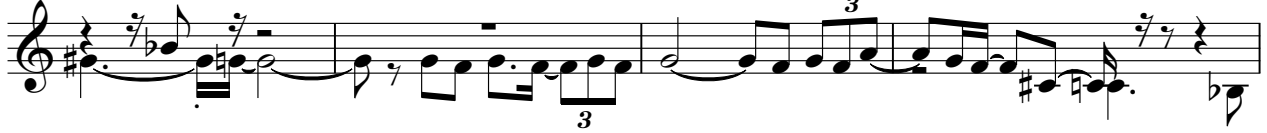
46



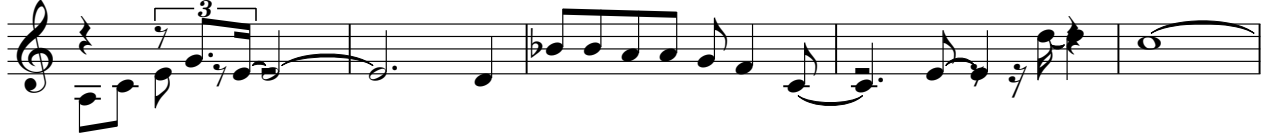
51



56



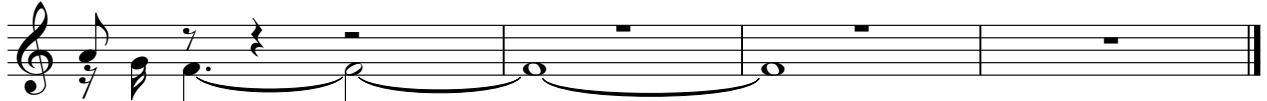
60



65



68



Johnny Mathis - Chances Are

Synth Strings

$\text{♩} = 80,000000$

This musical score for Synth Strings is written for a treble clef instrument in 4/4 time with a tempo of 80. It features ten staves of music. The first nine staves are primarily chordal accompaniment, with chords indicated by stemless notes and stems. The tenth staff contains melodic lines for strings, with notes beamed together and some chords.