

BJ Thomas - Tie A Yellow Ribbon

♩ = 150,000000    ♩ = 150,000000

808 Snare1  
TR-808 Kick2  
TR-808 Kick1  
808 Closed HH  
Acoustic Guitar  
Bass  
Clavinet  
Main Melody  
Strings  
Intro's Melody

♩ = 150,000000    ♩ = 150,000000

Detailed description: This system contains the first six measures of the song. It features a 4/4 time signature. The drum parts include Snare 1, TR-808 Kick 2, TR-808 Kick 1, and 808 Closed HH. The Acoustic Guitar and Clavinet play chords and rhythmic patterns. The Bass line is a simple walking bass. The Main Melody and Strings are silent. The Intro's Melody is a simple line of notes.



7

808 Snare1  
TR-808 Kick2  
TR-808 Kick1  
808 Closed HH  
CR-78 Hi Bongo  
Acoustic Guitar  
Bass  
Clavinet  
Main Melody  
Intro's Melody

Detailed description: This system contains measures 7 through 12. It includes a CR-78 Hi Bongo part. The Acoustic Guitar and Clavinet continue with their respective parts. The Bass line has a more active eighth-note pattern. The Main Melody and Intro's Melody continue.

Sequenced by ChartChai MeeSangNin (jeridu@yahoo.com).

12

808 Snare1

TR-808 Kick2

TR-808 Kick1

808 Closed HH

Acoustic Guitar

Bass

Clavinet

Main Melody



18

808 Snare1

TR-808 Kick2

TR-808 Kick1

808 Closed HH

Acoustic Guitar

Bass

Clavinet

Main Melody

23

808 Snare1  
TR-808 Kick2  
TR-808 Kick1  
808 Closed HH  
Acoustic Guitar  
Bass  
Clavinet  
Main Melody

Detailed description: This musical score covers measures 23 to 28. It features seven staves. The drum tracks (808 Snare1, TR-808 Kick2, TR-808 Kick1, 808 Closed HH) provide a rhythmic foundation. The Acoustic Guitar, Bass, and Clavinet tracks play harmonic accompaniment. The Main Melody track contains the primary melodic line. The key signature has one sharp (F#) and the time signature is 4/4.



29

808 Snare1  
TR-808 Kick2  
TR-808 Kick1  
808 Closed HH  
CR-78 Hi Bongo  
Acoustic Guitar  
Bass  
Clavinet  
Main Melody  
Strings

Detailed description: This musical score covers measures 29 to 34. It features nine staves. The drum tracks (808 Snare1, TR-808 Kick2, TR-808 Kick1, 808 Closed HH, CR-78 Hi Bongo) continue the rhythmic pattern. The Acoustic Guitar, Bass, and Clavinet tracks provide accompaniment. The Main Melody track continues the melodic line. The Strings track is introduced in measure 29 with a sustained chord. The key signature has one sharp (F#) and the time signature is 4/4.

35

808 Snare1  
TR-808 Kick2  
TR-808 Kick1  
808 Closed HH  
Acoustic Guitar  
Bass  
Clavinet  
Main Melody  
Strings



41

808 Snare1  
TR-808 Kick2  
TR-808 Kick1  
808 Closed HH  
Acoustic Guitar  
Bass  
Clavinet  
Main Melody  
Strings

47

808 Snare1  
TR-808 Kick2  
TR-808 Kick1  
808 Closed HH  
Acoustic Guitar  
Bass  
Clavinet  
Main Melody  
Strings

Detailed description: This musical score block covers measures 47 through 52. It features nine staves: 808 Snare1, TR-808 Kick2, TR-808 Kick1, 808 Closed HH, Acoustic Guitar, Bass, Clavinet, Main Melody, and Strings. The 808 Snare1 and TR-808 Kick1 parts consist of a steady quarter-note pattern. The TR-808 Kick2 part has a pattern of quarter notes with rests. The 808 Closed HH part features a series of 'x' marks indicating closed hi-hat sounds. The Acoustic Guitar part is written in treble clef with a complex rhythmic pattern of chords and single notes. The Bass part is in bass clef, playing a simple line of quarter notes. The Clavinet part is in treble clef, playing a rhythmic pattern of chords. The Main Melody part is in treble clef, featuring a melodic line with eighth and quarter notes. The Strings part is in treble clef, playing a sustained chord.



53

808 Snare1  
TR-808 Kick2  
TR-808 Kick1  
808 Closed HH  
Acoustic Guitar  
Bass  
Clavinet  
Main Melody  
Strings

Detailed description: This musical score block covers measures 53 through 58. It features the same nine staves as the previous block. The 808 Snare1 and TR-808 Kick1 parts continue with their steady quarter-note patterns. The TR-808 Kick2 part continues with its pattern of quarter notes and rests. The 808 Closed HH part continues with its 'x' marks. The Acoustic Guitar part continues with its complex rhythmic pattern. The Bass part continues with its simple line of quarter notes. The Clavinet part continues with its rhythmic pattern of chords. The Main Melody part continues with its melodic line. The Strings part continues with its sustained chord.

59

808 Snare1  
TR-808 Kick2  
TR-808 Kick1  
808 Closed HH  
Acoustic Guitar  
Bass  
Clavinet  
Main Melody  
Strings



64

808 Snare1  
TR-808 Kick2  
TR-808 Kick1  
808 Closed HH  
Acoustic Guitar  
Bass  
Clavinet  
Main Melody

69

808 Snare1  
TR-808 Kick2  
TR-808 Kick1  
808 Closed HH  
CR-78 Hi Bongo  
Acoustic Guitar  
Bass  
Clavinet  
Main Melody  
Strings



75

808 Snare1  
TR-808 Kick2  
TR-808 Kick1  
808 Closed HH  
Acoustic Guitar  
Bass  
Clavinet  
Main Melody  
Strings

81

808 Snare1

TR-808 Kick2

TR-808 Kick1

808 Closed HH

Acoustic Guitar

Bass

Clavinet

Main Melody

Strings



87

808 Snare1

TR-808 Kick2

TR-808 Kick1

808 Closed HH

Acoustic Guitar

Bass

Clavinet

Main Melody

Strings



93

808 Snare1

TR-808 Kick2

TR-808 Kick1

808 Closed HH

Acoustic Guitar

Bass

Clavinet

Main Melody

Strings



100

808 Snare1

TR-808 Kick2

TR-808 Kick1

808 Closed HH

909 Crash Cym

Acoustic Guitar

Bass

Clavinet

Main Melody

Strings

Intro's Melody

105

808 Snare1  
TR-808 Kick2  
TR-808 Kick1  
808 Closed HH  
CR-78 Hi Bongo  
Acoustic Guitar  
Bass  
Clavinet  
Strings  
Intro's Melody



111

808 Snare1  
TR-808 Kick2  
TR-808 Kick1  
808 Closed HH  
Acoustic Guitar  
Bass  
Clavinet  
Strings  
Intro's Melody

117

808 Snare1  
TR-808 Kick2  
TR-808 Kick1  
808 Closed HH  
CR-78 Hi Bongo  
Acoustic Guitar  
Bass  
Clavinet  
Strings  
Intro's Melody



122

808 Snare1  
TR-808 Kick2  
TR-808 Kick1  
808 Closed HH  
CR-78 Hi Bongo  
Acoustic Guitar  
Bass  
Clavinet  
Strings  
Intro's Melody

127

808 Snare1

TR-808 Kick2

TR-808 Kick1

808 Closed HH

Acoustic Guitar

Bass

Clavinet

Strings

Intro's Melody



131

808 Snare1

TR-808 Kick2

TR-808 Kick1

808 Closed HH

Acoustic Guitar

Bass

Clavinet

Strings

Intro's Melody

BJ Thomas - Tie A Yellow Ribbon  
808 Snare1

♩ = 150,000000 ♩ = 150,000000

The image displays a musical score for a snare drum part in 4/4 time. The tempo is marked as 150,000,000. The notation consists of eight staves, each representing a measure of music. The first staff begins with a 4/4 time signature and a double bar line. A thick black line with the number '2' above it spans the first two measures. The subsequent notes are quarter notes with snare drum symbols (z) above them. The second staff starts at measure 8. The third staff starts at measure 14. The fourth staff starts at measure 20. The fifth staff starts at measure 26 and features a thick black line with the number '3' above it spanning measures 26 and 27. The sixth staff starts at measure 34. The seventh staff starts at measure 40. The eighth staff starts at measure 46 and ends with a final bar line.

Sequenced by ChartChai MeeSangNin (jeridu@yahoo.com).

53



59



65



73



79



85



91



~~♩ = 145,000/16 ♩ = 132,000/16~~

99



105



111





BJ Thomas - Tie A Yellow Ribbon  
TR-808 Kick2

♩ = 150,000000 ♩ = 150,000000



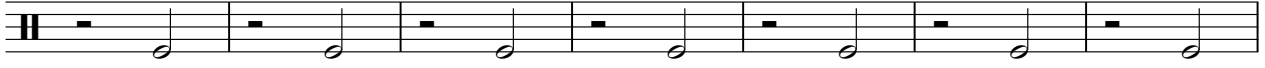
Sequenced by ChartChai MeeSangNin (jeridu@yahoo.com).



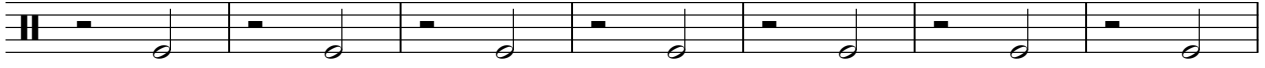
2

# TR-808 Kick2

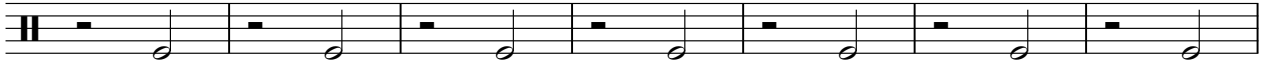
72



79



86

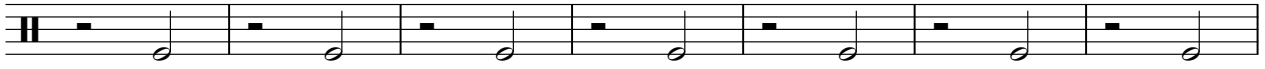


93

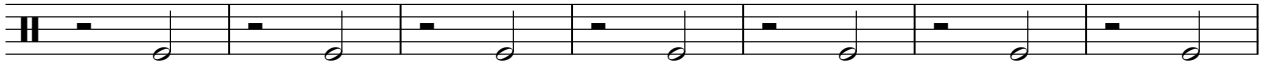
~~♩ = 145,000165 = 122,000165 = 99,000165~~



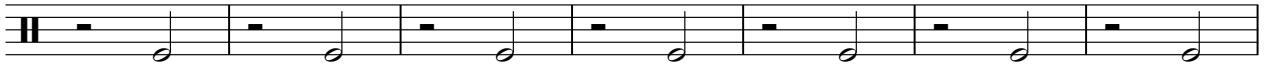
103



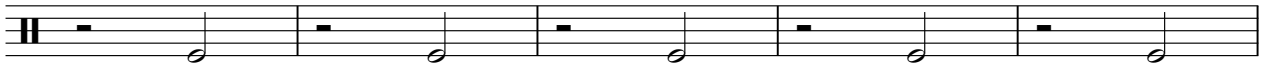
110



117



124



129

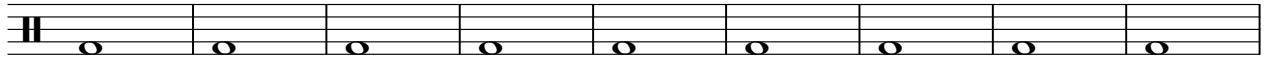


BJ Thomas - Tie A Yellow Ribbon  
TR-808 Kick1

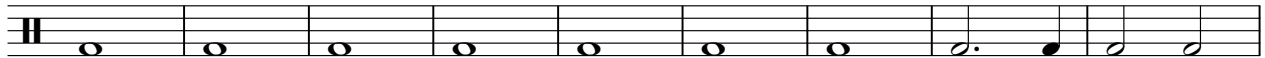
♩ = 150,000000 ♩ = 150,000000  
**2**



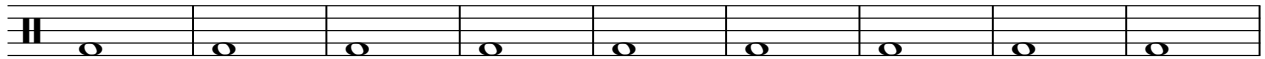
11



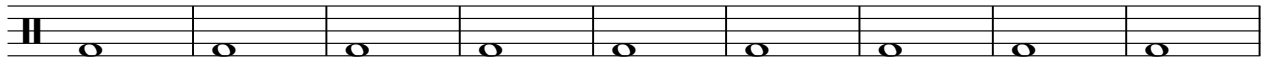
20



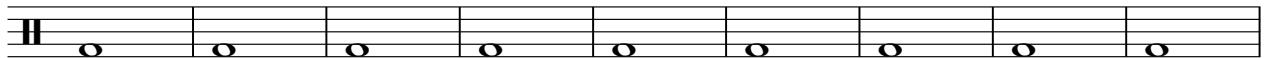
29



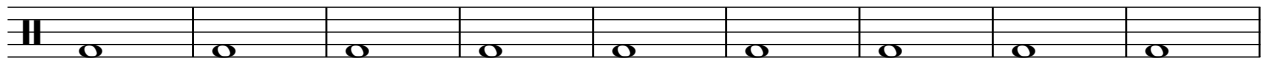
38



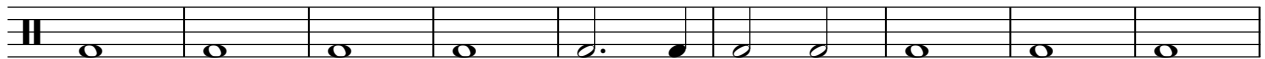
47



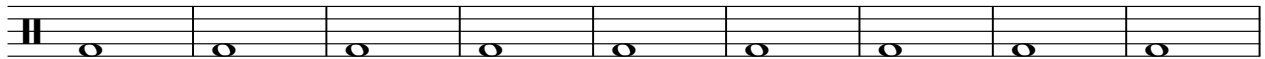
56



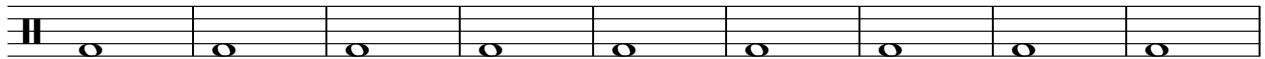
65



74



83



Sequenced by ChartChai MeeSangNin (jeridu@yahoo.com).

V.S.

2

TR-808 Kick1

92

~~♩ = 145,000167 ♩ = 129,000167~~

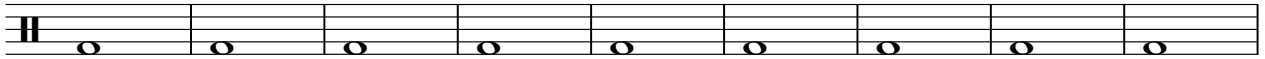
2



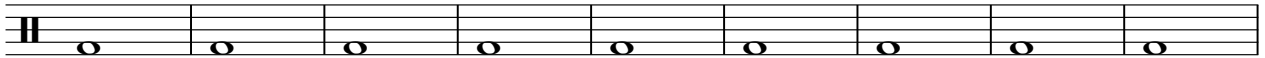
101



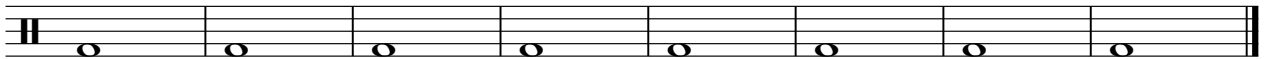
109



118



127



BJ Thomas - Tie A Yellow Ribbon  
808 Closed HH

♩ = 150,000000 ♩ = 150,000000

2

8

14

20

26

33

39

45

49

Sequenced by ChartChai MeeSangNin (jeridu@yahoo.com).

53

Musical staff for measure 53, featuring a series of eighth notes with 'x' marks above them, indicating closed hi-hats.

59

Musical staff for measure 59, featuring a series of eighth notes with 'x' marks above them, indicating closed hi-hats.

65

Musical staff for measure 65, featuring a series of eighth notes with 'x' marks above them, indicating closed hi-hats.

72

Musical staff for measure 72, featuring a series of eighth notes with 'x' marks above them, indicating closed hi-hats.

78

Musical staff for measure 78, featuring a series of eighth notes with 'x' marks above them, indicating closed hi-hats.

84

Musical staff for measure 84, featuring a series of eighth notes with 'x' marks above them, indicating closed hi-hats.

90

Musical staff for measure 90, featuring a series of eighth notes with 'x' marks above them, indicating closed hi-hats. Includes a tempo marking:  $\text{♩} = 145,000167$  and a double bar line with a '2' below it.

98

Musical staff for measure 98, featuring a series of eighth notes with 'x' marks above them, indicating closed hi-hats. Includes a double bar line with a '2' above it.

106

Musical staff for measure 106, featuring a series of eighth notes with 'x' marks above them, indicating closed hi-hats.

112

Musical staff for measure 112, featuring a series of eighth notes with 'x' marks above them, indicating closed hi-hats.

118



124



130



BJ Thomas - Tie A Yellow Ribbon  
909 Crash Cym

♩ = 150,000000 ♩ = 150,000000 ~~♩ = 145,000000 ♩ = 139,000000 ♩ = 239,000000~~

**2** **91** **2**

98 ~~♩ = 145,000000 ♩ = 139,000000 ♩ = 239,000000~~

**3** \* \* \* \* \* **32**

Sequenced by ChartChai MeeSangNin (jeridu@yahoo.com).

BJ Thomas - Tie A Yellow Ribbon  
CR-78 Hi Bongo

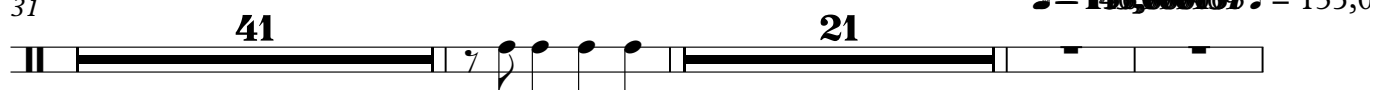
♩ = 150,000000 ♩ = 150,000000



4/4 2 7 19

Detailed description: This block contains the first line of musical notation. It starts with a treble clef and a 4/4 time signature. The first measure contains a whole note with the number '2' above it. The second measure contains a whole note with the number '7' above it. The third measure contains a quarter rest followed by three quarter notes. The fourth measure contains a whole note with the number '19' above it. The fifth measure contains a quarter rest followed by three quarter notes. The line ends with a double bar line.

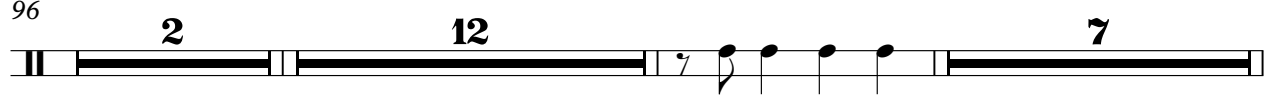
31 41 21 ~~♩ = 145,000000~~ ♩ = 135,0



Detailed description: This block contains the second line of musical notation. It starts with a double bar line. The first measure contains a whole note with the number '41' above it. The second measure contains a quarter rest followed by three quarter notes. The third measure contains a whole note with the number '21' above it. The line continues with several empty measures and ends with a double bar line.


~~♩ = 122,000000 ♩ = 120,000000 ♩ = 119,000000 ♩ = 118,000000 ♩ = 117,000000 ♩ = 116,000000 ♩ = 115,000000 ♩ = 114,000000 ♩ = 113,000000 ♩ = 112,000000 ♩ = 111,000000 ♩ = 110,000000 ♩ = 109,000000 ♩ = 108,000000 ♩ = 107,000000 ♩ = 106,000000 ♩ = 105,000000 ♩ = 104,000000 ♩ = 103,000000 ♩ = 102,000000 ♩ = 101,000000 ♩ = 100,000000 ♩ = 99,000000 ♩ = 98,000000 ♩ = 97,000000 ♩ = 96,000000~~

96 2 12 7



Detailed description: This block contains the third line of musical notation. It starts with a double bar line. The first measure contains a whole note with the number '2' above it. The second measure contains a whole note with the number '12' above it. The third measure contains a quarter rest followed by three quarter notes. The fourth measure contains a whole note with the number '7' above it. The line ends with a double bar line.

118 7 8



Detailed description: This block contains the fourth line of musical notation. It starts with a double bar line. The first measure contains a quarter rest followed by three quarter notes. The second measure contains a whole note with the number '7' above it. The third measure contains a quarter rest followed by three quarter notes. The fourth measure contains a whole note with the number '8' above it. The line ends with a double bar line.

Sequenced by ChartChai MeeSangNin (jeridu@yahoo.com).



BJ Thomas - Tie A Yellow Ribbon  
Acoustic Guitar

♩ = 150,000000    ♪ = 150,000000

7

11

15

19

23

27

32

36

41

Sequenced by ChartChai MeeSangNin (jeridu@yahoo.com).

V.S.



88



92



99



103



108



112



117



121



125



129



132

Musical notation for acoustic guitar, measures 132-135. The notation is written on a single staff with a treble clef. Measure 132 begins with a quarter rest, followed by a dotted quarter note chord (G4, B4, D5), a quarter rest, and a quarter note chord (G4, B4, D5). Measure 133 contains a quarter note chord (G4, B4, D5), a quarter rest, and a quarter note chord (G4, B4, D5). Measure 134 contains a quarter note chord (G4, B4, D5), a quarter rest, and a quarter note chord (G4, B4, D5). Measure 135 contains a quarter note chord (G4, B4, D5), a quarter rest, and a quarter note chord (G4, B4, D5). The piece concludes with a double bar line.

BJ Thomas - Tie A Yellow Ribbon  
Bass

♩ = 150,000000 ♩ = 150,000000



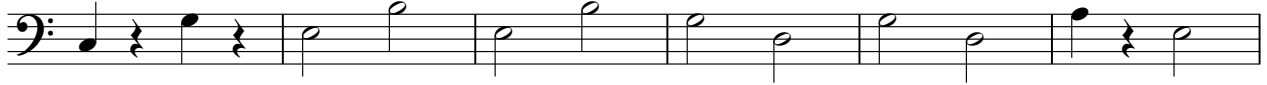
Sequenced by ChartChai MeeSangNin (jeridu@yahoo.com).

V.S.

68



74



80



87



94



102



108



113



119



125



130



BJ Thomas - Tie A Yellow Ribbon  
Clavinet

♩ = 150,000000    ♪ = 150,000000

7

11

16

20

24

28

33

37

Detailed description: The image shows a musical score for a clavinet in 4/4 time. The tempo is marked as ♩ = 150,000000 and ♪ = 150,000000. The score consists of nine staves of music. The first staff starts with two measures of whole rests, followed by a series of chords and eighth notes. The subsequent staves continue this pattern, with some staves starting with a measure number (7, 11, 16, 20, 24, 28, 33, 37). The music features a variety of chord voicings and rhythmic patterns, including eighth notes and chords. The key signature has one sharp (F#).

Sequenced by ChartChai MeeSangNin (jeridu@yahoo.com).

V.S.





88

93

99

104

109

113

118

122

126

130



53



58



63



69



75



81



86



91



~~♩ = 145,000~~

♩ = 135,000

~~♩ = 120,000~~

~~♩ = 100,000~~

96



101



31

BJ Thomas - Tie A Yellow Ribbon  
Strings

♩ = 150,000000      ♩ = 150,000000

28

34

42

51

59

69

Sequenced by ChartChai MeeSangNin (jeridu@yahoo.com).

73

80

89

98

107

116

125

BJ Thomas - Tie A Yellow Ribbon  
Intro's Melody

♩ = 150,000000 ♩ = 150,000000

7

12 82 2 5

103

108

113

118

123

128

131

Sequenced by ChartChai MeeSangNin (jeridu@yahoo.com).