

# Barbara Mandrell - Fooled By A Feeling

♩ = 130,000137

Treble Clef

Musical notation for the Treble Clef part, measures 1-4. The key signature is two sharps (F# and C#) and the time signature is 4/4. The melody consists of chords and eighth notes.

Bass Clef

Musical notation for the Bass Clef part, measures 1-4. The bass line features a steady eighth-note accompaniment.

4

Treble Clef

Musical notation for the Treble Clef part, measures 5-8. The melody continues with various chordal textures and melodic lines.

Bass Clef

Musical notation for the Bass Clef part, measures 5-8. The bass line maintains the eighth-note accompaniment.

8

Treble Clef

Musical notation for the Treble Clef part, measures 9-12. The melody features a more active eighth-note line.

Bass Clef

Musical notation for the Bass Clef part, measures 9-12. The bass line continues with the eighth-note accompaniment.

12

Treble Clef

Musical notation for the Treble Clef part, measures 13-16. The melody concludes with a final chordal texture.

Bass Clef

Musical notation for the Bass Clef part, measures 13-16. The bass line concludes with the eighth-note accompaniment.

16

Treble Clef

Musical notation for the Treble Clef part, measures 17-20. The melody features a final melodic phrase.

Bass Clef

Musical notation for the Bass Clef part, measures 17-20. The bass line concludes with the eighth-note accompaniment.

19

Treble Clef

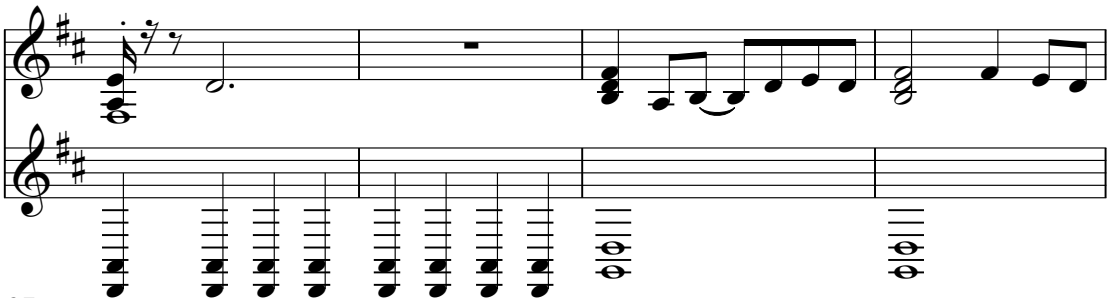
Bass Clef



23

Treble Clef

Bass Clef



27

Treble Clef

Bass Clef



32

Treble Clef

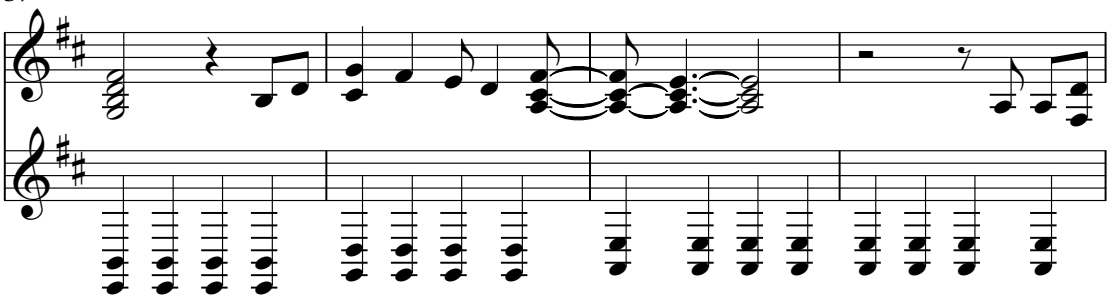
Bass Clef



37

Treble Clef


Bass Clef



41

Treble Clef

Bass Clef



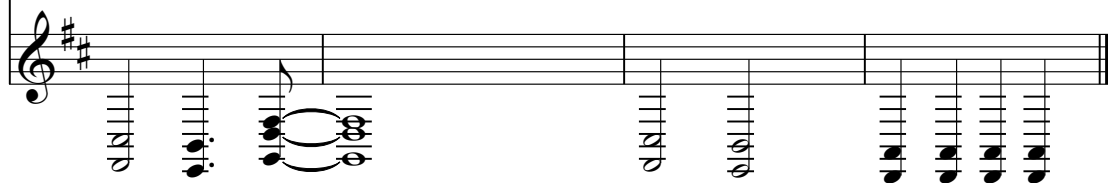
45

Treble Clef



Musical notation for the Treble Clef, showing a staff with a treble clef, a key signature of two sharps (F# and C#), and a 7/8 time signature. The notation includes a series of notes and rests across four measures, ending with a double bar line.

Bass Clef

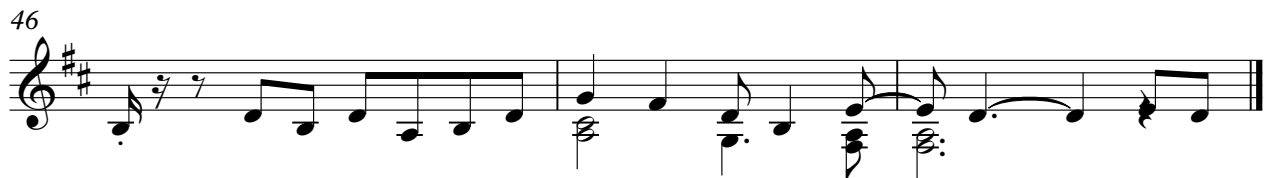


Musical notation for the Bass Clef, showing a staff with a bass clef, a key signature of two sharps (F# and C#), and a 7/8 time signature. The notation includes a series of notes and rests across four measures, ending with a double bar line.

# Barbara Mandrell - Fooled By A Feeling

Treble Clef

♩ = 130,000137



# Barbara Mandrell - Fooled By A Feeling

Bass Clef

♩ = 130,000137

Musical notation system 1 (measures 1-4) in treble clef, key of D major (two sharps), 4/4 time signature. It features a rhythmic pattern of eighth notes.

5

Musical notation system 2 (measures 5-8) in treble clef, key of D major, 4/4 time signature. It features a rhythmic pattern of eighth notes.

11

Musical notation system 3 (measures 9-12) in treble clef, key of D major, 4/4 time signature. It features a rhythmic pattern of eighth notes.

16

Musical notation system 4 (measures 13-15) in treble clef, key of D major, 4/4 time signature. It features a rhythmic pattern of eighth notes.

22

Musical notation system 5 (measures 16-21) in treble clef, key of D major, 4/4 time signature. It features a rhythmic pattern of eighth notes.

30

Musical notation system 6 (measures 22-29) in treble clef, key of D major, 4/4 time signature. It features a rhythmic pattern of eighth notes.

38

Musical notation system 7 (measures 30-37) in treble clef, key of D major, 4/4 time signature. It features a rhythmic pattern of eighth notes.

43

Musical notation system 8 (measures 38-43) in treble clef, key of D major, 4/4 time signature. It features a rhythmic pattern of eighth notes.