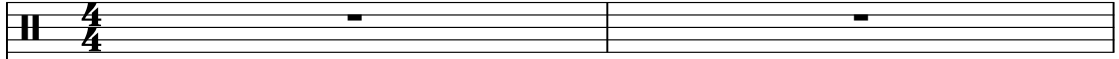



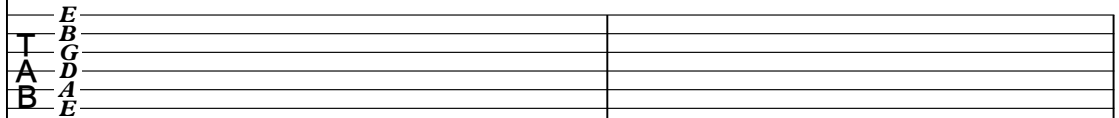
System of a down - Suggestions

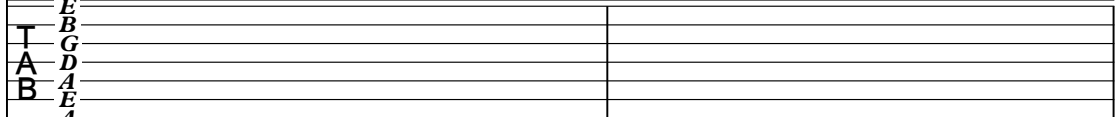
♩ = 90,000092

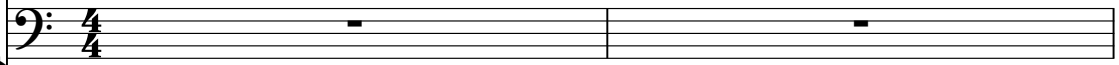
Percussion 


Acou1 

Acou2 

Light Dist 

Heavy Dist 

Bass 

Vocals 

♩ = 90,000092

Acou1 

Acou2 

Light Dist 

Bass 

2

5

Percussion

Light Dist

Bass

Vocals

6

Percussion

Light Dist

Bass

Vocals

7

Percussion

Light Dist

Bass

Vocals

8

Percussion

Light Dist

Bass

Vocals

9

Percussion

Light Dist

Bass

Vocals

10

Percussion

Light Dist

Bass

Vocals

15

Percussion

Heavy Dist

Bass

Vocals

17

Percussion

Light Dist

Bass

Vocals

18

Percussion

Light Dist

Bass

Vocals

19

Percussion

Light Dist

Bass

Vocals

20

Percussion

Light Dist

Bass

Vocals

21

Percussion

Light Dist

Bass

Vocals

22 **6** **6** **6** **6** 7

Percussion

Light Dist

T
A
B

Bass

Vocals

23 **6** **6** **6** **6**

Percussion

Light Dist

T
A
B

Bass

Vocals

24 **6** **6**

Percussion

Light Dist

T
A
B

Bass

Vocals

25

Percussion

Heavy Dist

Bass

Vocals

27

Percussion

Heavy Dist

Bass

Vocals

29

Percussion

Light Dist

Heavy Dist

Bass

31

Percussion

Light Dist

Heavy Dist

Bass

33

Percussion

Acou1

Acou2

Light Dist

Heavy Dist

Bass

35

Acou1

Acou2

37

Percussion

Heavy Dist

Bass

40

Percussion

Heavy Dist

Bass

42

Percussion

Heavy Dist

Bass

44

Percussion

Heavy Dist

Bass

45

Percussion

Light Dist

Bass

Vocals

46

Percussion

Light Dist

Bass

Vocals

47

Percussion

Light Dist

Bass

Vocals

48

Percussion

Light Dist

Bass

Vocals

49

Percussion

Heavy Dist

Bass

Vocals

2

Percussion

The musical score for Percussion spans measures 18 to 30. It is written on two staves per measure. The top staff features rhythmic patterns, often marked with a '6' above the staff, indicating a sixteenth-note figure. The bottom staff contains a melodic line with notes, rests, and slurs. The notation includes various rhythmic values and articulations, such as accents and slurs, across the measures.

32

3

Measure 32: Two staves. The top staff contains a sequence of eighth notes with accents, followed by a triplet of eighth notes. The bottom staff contains a steady eighth-note accompaniment.

38

Measure 38: Two staves. The top staff features eighth notes with accents. The bottom staff continues the eighth-note accompaniment.

41

Measure 41: Two staves. The top staff has eighth notes with accents. The bottom staff continues the eighth-note accompaniment.

44

6

6

6

6

Measure 44: Two staves. The top staff has eighth notes with accents, followed by sixteenth-note patterns marked with '6'. The bottom staff continues the eighth-note accompaniment.

46

6

6

6

6

Measure 46: Two staves. The top staff has sixteenth-note patterns marked with '6'. The bottom staff continues the eighth-note accompaniment.

47

6

6

6

6

Measure 47: Two staves. The top staff has sixteenth-note patterns marked with '6'. The bottom staff continues the eighth-note accompaniment.

48

6

6

Measure 48: Two staves. The top staff has sixteenth-note patterns marked with '6'. The bottom staff continues the eighth-note accompaniment.

50

Measure 50: Two staves. The top staff has eighth notes with accents. The bottom staff continues the eighth-note accompaniment.

52

Measure 52: Two staves. The top staff has eighth notes with accents. The bottom staff continues the eighth-note accompaniment.

54

Measure 54: Two staves. The top staff has eighth notes with accents. The bottom staff continues the eighth-note accompaniment.

V.S.

4

Percussion

56

Musical score for Percussion, measures 56-60. The score is written on a single staff with a treble clef. Measure 56 contains a series of eighth notes with stems pointing down, grouped by beams. Measure 57 continues with eighth notes, including some with stems pointing up. Measure 58 features a complex rhythmic pattern with multiple beams and stems, some marked with 'x' symbols. Measure 59 has a long note with a slur and a fermata. Measure 60 ends with a whole note.

System of a down - Suggestions

Light Dist

♩ = 90,000092

3

E																			
T																			
A																			
B																			
E																			
A																			

6

T																			
A	1	2	2	1	2	2	1	2	2	1	2	2	1	2	2	0	2	2	0
B																3	3	3	3

8

T																			
A	1	2	2	1	2	2	1	2	2	1	2	2	1	2	2	0	2	2	0
B																3	3	3	3

10

T																			
A	1	2	2	1	2	2	1	2	2	1	2	2	1	2	2	0	2	2	0
B																3	3	3	3

12

4

T																			
A	1	2	2	1	2	2	2	2	2	2	2	2	2	2	2				
B																3	3	3	3

18

T																			
A	1	2	2	1	2	2	1	2	2	1	2	2	1	2	2	0	2	2	0
B																3	3	3	3

20

T																			
A	1	2	2	1	2	2	1	2	2	1	2	2	1	2	2	0	2	2	0
B																3	3	3	3

22

T																			
A	1	2	2	1	2	2	1	2	2	1	2	2	1	2	2	0	2	2	0
B																3	3	3	3

24

4

T																			
A	1	2	2	1	2	2	1	2	2	1	2	2	1	2	2				
B																3	3	3	3

2 29

Light Dist

	2 2 2 2 2 2 2 2 2 2 2 2	0 0 0 0 0 0 0 0 0 0 0 0	2 2 2 2 2 2 2 2 2 2 2 2
T			
A	0 0 0 0 0 0 0 0 0 0 0 0	3 3 3 3 3 3 3 3 3 3 3 3	0 0 0 0 0 0 0 0 0 0 0 0
B			

32

10

	0 0 0 0 0 0 0 0 0 0 0 0			
T				
A	3 3 3 3 3 3 3 3 3 3 3 3	0	0	=====
B		0	0	
		5	5	

45

	2 2 0 2 2 0 2 2 0 2 2	1 2 2 1 2 2 1 2 2 1 2 2
T		
A	0 2 2 0 2 2 0 2 2 0 2 2	1 2 2 1 2 2 1 2 2 1 2 2
B	3 3 3 3 3 3 3 3 3 3 3 3	3 3 3 3 3 3 3 3 3 3 3 3

47

4

	2 2 0 2 2 0 2 2 0 2 2	1 2 2 1 2 2 1 2 2 1 2 2	
T			
A	0 2 2 0 2 2 0 2 2 0 2 2	1 2 2 1 2 2 1 2 2 1 2 2	=====
B	3 3 3 3 3 3 3 3 3 3 3 3	3 3 3 3 3 3 3 3 3 3 3 3	

53

	2 2 2 2 2 2 2 2 2 2 2 2	0 0 0 0 0 0 0 0 0 0 0 0	2 2 2 2 2 2 2 2 2 2 2 2
T			
A	0 0 0 0 0 0 0 0 0 0 0 0	3 3 3 3 3 3 3 3 3 3 3 3	0 0 0 0 0 0 0 0 0 0 0 0
B			

56

	0 0 0 0 0 0 0 0 0 0 0 0			
T				
A	3 3 3 3 3 3 3 3 3 3 3 3	0	0	0
B		0	0	0
		5	5	5

System of a down - Suggestions

Heavy Dist

♩ = 90,000092
12

Measures 12-14: Measure 12 is a thick black bar. Measures 13 and 14: Treble clef (T) has 0s; Bass clef (B) has 0s and 6s.

15

Measures 15-17: Measure 15: Treble (T) 0s, Bass (B) 0s. Measure 16: Treble (T) 6s, Bass (B) 6s. Measure 17: Thick black bar.

25

Measures 25-27: Measure 25: Treble (T) 0s, Bass (B) 0s. Measure 26: Treble (T) 6s, Bass (B) 6s. Measure 27: Treble (T) 6s, Bass (B) 6s.

27

Measures 28-30: Measure 28: Treble (T) 0s, Bass (B) 0s. Measure 29: Treble (T) 6s, Bass (B) 6s. Measure 30: Treble (T) 2s, Bass (B) 0s.

30

Measures 31-33: Measure 31: Treble (T) 0s, Bass (B) 0s. Measure 32: Treble (T) 2s, Bass (B) 0s. Measure 33: Treble (T) 3s, Bass (B) 0s.

33

Measures 34-36: Measure 34: Treble (T) 0s, Bass (B) 0s. Measure 35: Thick black bar. Measure 36: Treble (T) 0s, Bass (B) 0s.

39

Measures 39-41: Measure 39: Treble (T) 0s, Bass (B) 0s. Measure 40: Treble (T) 6s, Bass (B) 6s. Measure 41: Treble (T) 0s, Bass (B) 5s.

42

Measures 42-44: Measure 42: Treble (T) 6s, Bass (B) 6s. Measure 43: Treble (T) 0s, Bass (B) 5s. Measure 44: Treble (T) 0s, Bass (B) 5s.

44

Measures 45-47: Measure 45: Treble (T) 3s, Bass (B) 1s. Measure 46: Treble (T) 4s, Bass (B) 6s. Measure 47: Thick black bar.

4

2 49

Heavy Dist

T		
A	0 0 0 0 0 0 0 0 0 0 0 0 0 0 0 0	6 6 6 6 6 6 6 6 6 6 6 6 6 6 6 6
B	0 0 0 0 0 0 0 0 0 0 0 0 0 0 0 0	6 6 6 6 6 6 6 6 6 6 6 6 6 6 6 6
	5 5 5 5 5 5 5 5 5 5 5 5 5 5 5 5	6 6 6 6 6 6 6 6 6 6 6 6 6 6 6 6

51

T			2 2 2 2 2 2 2 2 2 2 2 2 2 2 2 2
A	0 0 0 0 0 0 0 0 0 0 0 0 0 0 0 0	6 6 6 6 6 6 6 6 6 6 6 6 6 6 6 6	0 0 0 0 0 0 0 0 0 0 0 0 0 0 0 0
B	0 0 0 0 0 0 0 0 0 0 0 0 0 0 0 0	6 6 6 6 6 6 6 6 6 6 6 6 6 6 6 6	
	5 5 5 5 5 5 5 5 5 5 5 5 5 5 5 5	6 6 6 6 6 6 6 6 6 6 6 6 6 6 6 6	

54

T	0 0 0 0 0 0 0 0 0 0 0 0 0 0 0 0	2 2 2 2 2 2 2 2 2 2 2 2 2 2 2 2
A	3 3 3 3 3 3 3 3 3 3 3 3 3 3 3 3	0 0 0 0 0 0 0 0 0 0 0 0 0 0 0 0
B		

56

T	0 0 0 0 0 0 0 0 0 0 0 0 0 0 0 0				
A	3 3 3 3 3 3 3 3 3 3 3 3 3 3 3 3	0	0	0	
B		0	0	0	
		5	5	5	

System of a down - Suggestions

Bass

♩ = 90,000092

3



6



8



10



12



14



16



18



20



22



V.S.

24



26



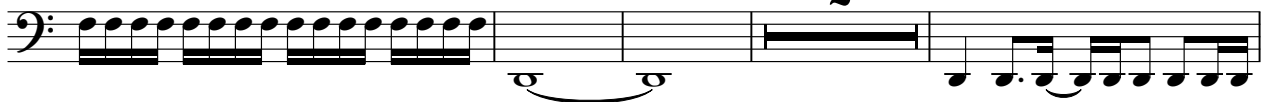
28



30



32



38



41



43



45



47



49



51



53



55



57



System of a down - Suggestions

Vocals

♩ = 90,000092

4

7

10

14

18

21

24

27

16

2

Vocals

45



48



53



55

