

CHAMPLET_LAURENT-Le_chat

Musical score for Soprano, Alto, and Baritone. The score is in 9/8 time and B-flat major. The Soprano part features a melodic line with eighth and quarter notes. The Alto parts provide harmonic support with a mix of quarter and eighth notes. The Baritone part has a lower melodic line with eighth and quarter notes.

Musical score for Soprano, Alto, and Baritone, starting at measure 4. The Soprano part continues with a melodic line, including a long note with a fermata. The Alto parts continue with their harmonic accompaniment. The Baritone part continues with its lower melodic line.

2

8

S.
A.
A.
Bar.

11

S.
A.
A.
Bar.

14

S.
A.
A.
Bar.

This musical system covers measures 14 through 17. It features four staves: Soprano (S.), two Alto (A.) parts, and Bass (Bar.). The key signature has two flats (B-flat and E-flat), and the time signature is 4/4. The Soprano part begins with a whole rest in measure 14, followed by a half note G4, a dotted half note A4, and a quarter note B4 in measure 15. The Alto parts and Bass part provide harmonic support with various rhythmic patterns, including eighth and sixteenth notes, and rests.

18

S.
A.
A.
Bar.

This musical system covers measures 18 through 21. It features four staves: Soprano (S.), two Alto (A.) parts, and Bass (Bar.). The key signature has two flats (B-flat and E-flat), and the time signature is 4/4. The Soprano part starts with a quarter note G4, followed by eighth notes A4, B4, and C5 in measure 18. The Alto parts and Bass part continue the harmonic accompaniment with rhythmic patterns of eighth and sixteenth notes.

21

S.

A.

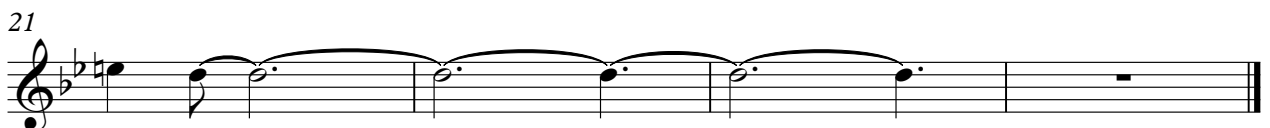
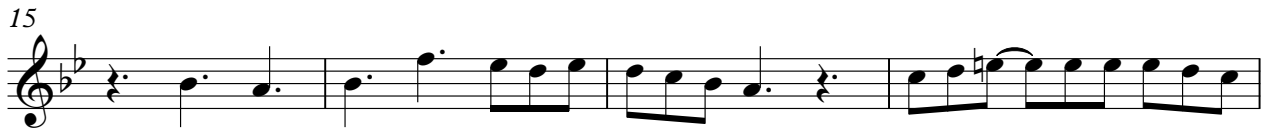
A.

Bar.

Detailed description: This image shows a page of a musical score, page 4, starting at measure 21. The score is written for four parts: Soprano (S.), Alto (A.), another Alto (A.), and Baritone (Bar.). All parts are in the key of B-flat major (two flats) and 4/4 time. The Soprano part (S.) begins with a treble clef and a series of notes: G4 (quarter), A4 (quarter), Bb4 (quarter), C5 (quarter), Bb4 (quarter), A4 (quarter), G4 (quarter), and a whole rest in the final measure. The first Alto part (A.) starts with a treble clef and notes: G4 (quarter), A4 (quarter), Bb4 (quarter), C5 (quarter), Bb4 (quarter), A4 (quarter), G4 (quarter), and a whole rest. The second Alto part (A.) also uses a treble clef with notes: G4 (quarter), A4 (quarter), Bb4 (quarter), C5 (quarter), Bb4 (quarter), A4 (quarter), G4 (quarter), and a whole rest. The Baritone part (Bar.) uses a bass clef and notes: G3 (quarter), A3 (quarter), Bb3 (quarter), C4 (quarter), Bb3 (quarter), A3 (quarter), G3 (quarter), and a whole rest. A large vertical brace on the left side of the page groups the four staves together.

Soprano

CHAMPLET_LAURENT-Le_chat



Alto

CHAMPLET_LAURENT-Le_chat



CHAMPLET_LAURENT-Le_chat

Alto



Baritone

CHAMPLET_LAURENT-Le_chat



6



10



14



19

