

Rameau_Jean-Philippe-Hymne_agrave_la_nuit

♩ = 76,000160

Musical score for Alto, Quintus, and Baritone parts. The score is written in G major (one flat) and 4/4 time. The tempo is marked as ♩ = 76,000160. The Alto part is in the treble clef, the Quintus part is in the treble clef with an 8va marking, and the Baritone part is in the bass clef. The music consists of a single melodic line for each part, with some rests and a fermata in the final measure.

Musical score for Alto, Quintus, and Baritone parts, starting at measure 8. The score is written in G major (one flat) and 4/4 time. The Alto part is in the treble clef, the Quintus part is in the treble clef with an 8va marking, and the Baritone part is in the bass clef. The music consists of a single melodic line for each part, with some rests and a fermata in the final measure.

2

14

A.

A.

Q.

Bar.

20

$\text{♩} = 72,64,003206 \neq 72,0003$

A.

A.

Q.

Bar.

27

A.
A.
Q.
Bar.

34

A.
A.
Q.
Bar.

40

A.

A.

Q.

Bar.

46

$\text{♩} = 76,000160$ $\text{♩} = 55,000080$ $\text{♩} = 64,000206$

A.

A.

Q.

Bar.

Alto Rameau_Jean-Philippe-Hymne_agrave_la_nuit

♩ = 76,000160



9




16



23

♩ = 72,000206 ♯ = 72,000031



31



38




44

♩ = 76,000160



48

♩ = 55,999977 ♯ = 172,000031 ♩ = 64,000206



Alto Rameau_Jean-Philippe-Hymne_agrave_la_nuit

♩ = 76,000160

9

16

23

♩ = 72,000206 ♯ = 72,000031

31

38

45

♩ = 76,000160 ♩ = 55,9997080 ♩ = 64,000206

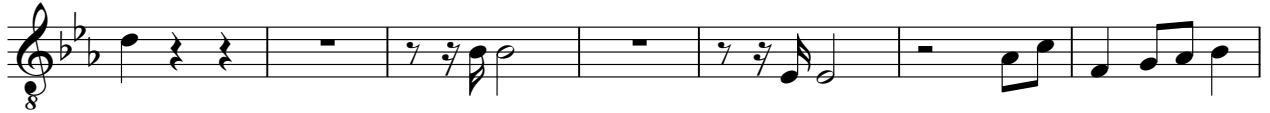
Rameau_Jean-Philippe-Hymne_agrave_la_nuit

Quintus

♩ = 76,000160



9



16



23

♩ = 72,64,000206 = 72,0,0000B1



31



38



45

♩ = 76,000160

♩ = 55,99,99,980031 ♩ = 64,000206



Rameau_Jean-Philippe-Hymne_agrave_la_nuit

Baritone

♩ = 76,000160



9



20

♩ = 72,60003206 = 72,700003031



29



40



46

♩ = 76,000160

♩ = 55,9999708 = 72,000031 = 64,000206

