

Sally MacLennane

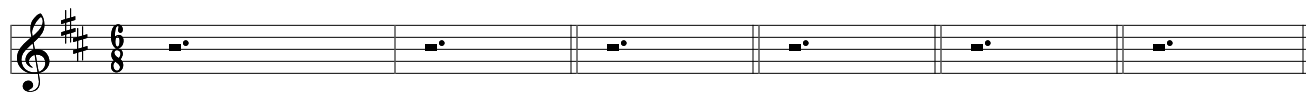
The Pogues
Rum Sodomy & the Lash

Words & Music by Shane MacGowan

Moderate $\text{♩} = 150$

G D A D

Vocal

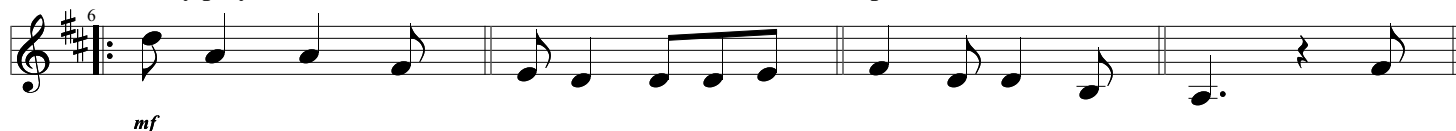


D Jimmy played har

D monica in the

G pub where I was

D born - He



D played it from the

D night time to the

G peaceful early

A morn - He



G soothed the souls of

G psychos and the

D men who had the

A horn - and they

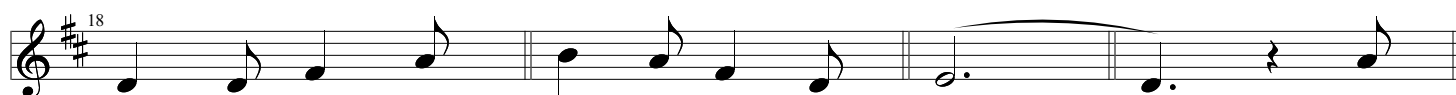


D all looked very

G happy in the

A morn

D ing - Now

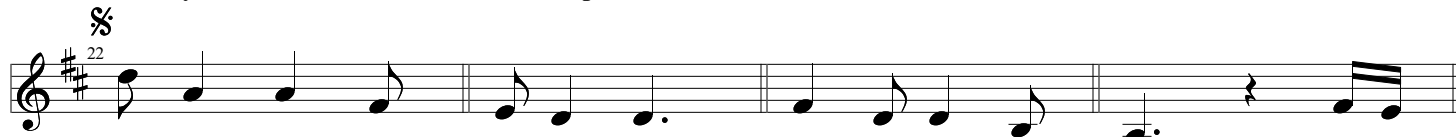


D Jimmy didn't

D like his place

G in this world of

D ours - Where the



D elephant man broke

D strong men's necks when he

G had too many

A powers - So



G sad to see the

G grieving of the

D people that I'm leav

A ing - and he



D took the road for

G God knows in the

A morn

D ing - We



D walked him to the G station in the D rain D We

D kissed him as we G put him on the A train A and we

G sang him a D song of D times long G gone - though we

D knew that we'd be A seeing him a D gain A (Far away)

D Sad to D say - I D must be on my D way - so

G buy me beer and D whiskey cause I'm A going far a A way - I'd

D like to D think I'll be re D turning when I can D to the

G greatest little D boozier and to A Sally MacLen D nane - The

Da Coda 1.

D nane G D A D

2.

Da Segno

D nane G D A D D

1. 2.