

Akhoto - Bridal march

♩ = 120,000000

Track 1

Track 2

7

Track 1

Track 2

13

Track 1

Track 2

19

Track 1

Track 2

25

Track 1

Track 2

31

Track 1

Track 2

38

Track 1

Track 2

43

Track 1

Track 2

Track 1: Treble clef, three measures. Measure 43: C4, E4, G4, B4. Measure 44: C4, E4, G4, B4. Measure 45: C#4, E4, G4, B4.

Track 2: Treble clef, three measures. Measure 43: C4, E4, G4, B4. Measure 44: C4, E4, G4, B4. Measure 45: C4, E4, G4, B4.

46

Track 1

Track 2

Track 1: Treble clef, five measures. Measure 46: C#4, E4, G4, B4. Measure 47: C#4, E4, G4, B4. Measure 48: C#4, E4, G4, B4. Measure 49: C#4, E4, G4, B4. Measure 50: C#4, E4, G4, B4.

Track 2: Treble clef, five measures. Measure 46: C#4, E4, G4, B4. Measure 47: C#4, E4, G4, B4. Measure 48: C#4, E4, G4, B4. Measure 49: C#4, E4, G4, B4. Measure 50: C#4, E4, G4, B4.

Track 1

Akhoto - Bridal march

♩ = 120,000000

Measures 1-7 of the score. The music is in 4/4 time and D major. The right hand plays chords and single notes, while the left hand provides a bass line with chords and moving lines.

8

Measures 8-14 of the score. The right hand continues with chords and single notes. The left hand features a more active bass line with eighth and sixteenth notes.

15

Measures 15-20 of the score. The right hand has chords and single notes. The left hand has a melodic line with slurs and ties, indicating a more complex rhythmic pattern.

21

Measures 21-27 of the score. The right hand has chords and single notes. The left hand has a bass line with chords and moving lines.

28

Measures 28-34 of the score. The right hand has chords and single notes. The left hand has a bass line with chords and moving lines.

35

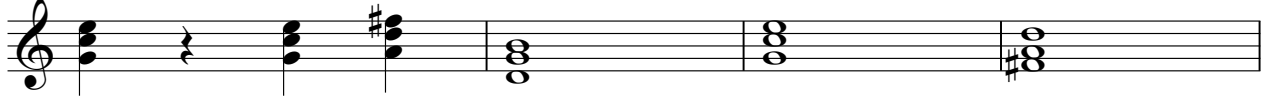
Measures 35-41 of the score. The right hand has chords and single notes. The left hand has a melodic line with slurs and ties, similar to measures 15-20.

V.S.

2

Track 1

42



46



Akhoto - Bridal march

Track 2

♩ = 120,000000

Musical staff 1, measures 1-6. The staff is in treble clef with a 4/4 time signature. It begins with a key signature of one sharp (F#). The music features a series of chords and melodic lines, including a prominent eighth-note pattern in the first few measures.

Musical staff 2, measures 7-13. The staff continues the melody from the previous system, featuring a mix of eighth and sixteenth notes, with some measures containing rests.

Musical staff 3, measures 14-20. This system shows a continuation of the melodic line with various rhythmic patterns and chordal accompaniment.

Musical staff 4, measures 21-26. The music continues with a similar rhythmic and melodic structure, featuring some dynamic markings.

Musical staff 5, measures 27-33. This system includes a variety of note values and rests, maintaining the overall tempo and key signature.

Musical staff 6, measures 34-40. The melody continues with a focus on eighth-note patterns and chordal support.

Musical staff 7, measures 41-44. This system features a more complex rhythmic arrangement with many sixteenth notes and rests.

Musical staff 8, measures 45-50. The final system of the track, concluding with a final chord and a double bar line.