

Bee Gees - Words

♩ = 82,000038

Clarinet in B \flat

Horn in F

Percussion

Jazz Guitar

Fretless Electric Bass

♩ = 82,000038

Viola

Solo

Cl.

J. Gtr.

E. Bass

Solo

6

Cl.

J. Gtr.

E. Bass

Solo

9

Cl.

J. Gtr.

E. Bass

Solo

12

Cl.

J. Gtr.

E. Bass

Solo

15

Cl.

J. Gtr.

E. Bass

Solo

18

Cl.

J. Gtr.

E. Bass

Solo

21

Cl.

Perc.

E. Bass

Vla.

Solo

24

Cl.
Perc.
E. Bass
Vla.
Solo

This musical system covers measures 24 and 25. It features five staves: Clarinet (Cl.), Percussion (Perc.), Electric Bass (E. Bass), Viola (Vla.), and Solo guitar. The key signature is one sharp (F#). The Clarinet part begins with a whole rest in measure 24, followed by a melodic line in measure 25. The Percussion part has a consistent rhythmic pattern of eighth notes with 'x' marks above them. The Electric Bass part plays a steady eighth-note line. The Viola part has a few notes in measure 24 and a long sustain in measure 25. The Solo guitar part consists of chords in measure 24 and a complex, multi-measure solo in measure 25.

26

Cl.
Perc.
E. Bass
Vla.
Solo

This musical system covers measures 26 and 27. It features the same five staves as the previous system. The Clarinet part has a melodic line in measure 26 and a whole rest in measure 27. The Percussion part continues its rhythmic pattern. The Electric Bass part plays a steady eighth-note line. The Viola part has a few notes in measure 26 and a whole rest in measure 27. The Solo guitar part consists of chords in measure 26 and a complex, multi-measure solo in measure 27.

28

Cl. Perc. E. Bass Vla. Solo

This musical system covers measures 28 and 29. The Clarinet (Cl.) part begins with a whole rest in measure 28, followed by a melodic line in measure 29. The Percussion (Perc.) part features a consistent rhythmic pattern of eighth notes with 'x' marks above them, indicating cymbal hits. The Electric Bass (E. Bass) part plays a steady eighth-note bass line. The Viola (Vla.) part has a few notes in measure 28 and a long, sustained note in measure 29. The Solo part consists of a dense, multi-voice texture of chords and moving lines.

30

Cl. Perc. E. Bass Vla. Solo

This musical system covers measures 30 and 31. The Clarinet (Cl.) part continues its melodic line in measure 30 and has a whole rest in measure 31. The Percussion (Perc.) part maintains its rhythmic pattern until measure 30, where it ends with a cymbal crash. The Electric Bass (E. Bass) part continues its eighth-note line. The Viola (Vla.) part has a few notes in measure 30 and is silent in measure 31. The Solo part continues its complex texture.

33

Cl.
Hn.
Perc.
E. Bass
Vla.
Solo

Detailed description: This system of music covers measures 33, 34, and 35. The Clarinet (Cl.) part features a melodic line with eighth and sixteenth notes. The Horn (Hn.) part has a sparse accompaniment with quarter and half notes. The Percussion (Perc.) part consists of a steady eighth-note pattern with 'x' marks above the notes. The Electric Bass (E. Bass) part provides a rhythmic foundation with eighth and quarter notes. The Viola (Vla.) part is mostly silent, with a few notes in measure 35. The Solo part features a series of chords, some with a '7' marking, indicating a seventh chord.

36

Cl.
Perc.
E. Bass
Vla.
Solo

Detailed description: This system of music covers measures 36, 37, and 38. The Clarinet (Cl.) part has a melodic line with a triplet of eighth notes in measure 37. The Percussion (Perc.) part continues with an eighth-note pattern, including a '6' marking below a note in measure 37. The Electric Bass (E. Bass) part maintains its rhythmic pattern. The Viola (Vla.) part has a melodic line with a long slur over measures 37 and 38. The Solo part features a series of chords, some with a '7' marking, and a '6' marking below a note in measure 37.

38

Cl.
Perc.
E. Bass
Vla.
Solo

40

Cl.
Perc.
E. Bass
Vla.
Solo

42

Cl.
Perc.
E. Bass
Vla.
Solo

Detailed description: This system of musical notation covers measures 42 and 43. The Clarinet (Cl.) part is in treble clef with a key signature of one sharp (F#) and a 7/8 time signature. The Percussion (Perc.) part is in a drum set notation. The Electric Bass (E. Bass) part is in bass clef with a key signature of one sharp. The Viola (Vla.) part is in bass clef with a key signature of one sharp. The Solo part is in treble clef with a key signature of one sharp and includes guitar tablature below the staff. The music features a mix of eighth and quarter notes, with some syncopation in the 7/8 time.

44

Cl.
Hn.
Perc.
E. Bass
Vla.
Solo

Detailed description: This system of musical notation covers measures 44 and 45. The Clarinet (Cl.) part is in treble clef with a key signature of one sharp. The Horn (Hn.) part is in treble clef with a key signature of one sharp. The Percussion (Perc.) part is in a drum set notation. The Electric Bass (E. Bass) part is in bass clef with a key signature of one sharp and includes a triplet of eighth notes in measure 44. The Viola (Vla.) part is in bass clef with a key signature of one sharp. The Solo part is in treble clef with a key signature of one sharp and includes guitar tablature below the staff. The music continues with various rhythmic patterns and melodic lines.

46

Cl.
Hn.
Perc.
E. Bass
Vla.
Solo

Detailed description: This system of music covers measures 46 and 47. The Clarinet (Cl.) part starts with a quarter note G4, followed by eighth notes A4, B4, and C5, then a half note B4. The Horn (Hn.) part has a half note G4. The Percussion (Perc.) part features a complex rhythmic pattern with eighth notes and x's indicating hits. The Electric Bass (E. Bass) part has a steady eighth-note line. The Viola (Vla.) part has a whole note chord in measure 46 and a whole note chord in measure 47. The Solo part consists of a dense, multi-voice texture with many notes.

48

Cl.
Hn.
Perc.
E. Bass
Vla.
Solo

Detailed description: This system of music covers measures 48, 49, and 50. The Clarinet (Cl.) part has a melodic line with eighth and quarter notes. The Horn (Hn.) part is mostly silent. The Percussion (Perc.) part continues with its rhythmic pattern. The Electric Bass (E. Bass) part has a steady eighth-note line. The Viola (Vla.) part has a simple line with quarter notes and rests. The Solo part features a series of chords and single notes, with some x's indicating fretted notes.

51

Cl.
Hn.
Perc.
E. Bass
Vla.
Solo

Detailed description: This system of music covers measures 51, 52, and 53. The Clarinet (Cl.) part starts with a half note G4, followed by a quarter rest, and then a quarter note G4. The Horn (Hn.) part has a whole rest in measure 51 and a half note G4 in measure 52. The Percussion (Perc.) part features a rhythmic pattern of eighth notes with 'x' marks above them, indicating a specific sound effect. The Electric Bass (E. Bass) part plays a steady eighth-note line. The Viola (Vla.) part has a whole rest in measure 51 and a half note G4 in measure 52. The Solo part is a complex guitar arrangement with multiple voices, including chords and melodic lines.

54

♩ = 78,999969 ♩ = 75,99

Cl.
Hn.
Perc.
E. Bass
Vla.
Solo

Detailed description: This system of music covers measures 54, 55, and 56. The Clarinet (Cl.) part has a half note G4 in measure 54, followed by a quarter rest, and then a quarter note G4. The Horn (Hn.) part has a whole rest in measure 54 and a half note G4 in measure 55. The Percussion (Perc.) part continues with the eighth-note pattern. The Electric Bass (E. Bass) part has a half note G4 in measure 54 and a quarter note G4 in measure 55. The Viola (Vla.) part has a whole rest in measure 54 and a half note G4 in measure 55. The Solo part continues with complex guitar arrangements. A tempo change is indicated at the end of the system: ♩ = 78,999969 ♩ = 75,99.

57 $\text{♩} = 72,999985$ $\text{♩} = 69,000015$ $\text{♩} = 63,000020$ $\text{♩} = 75,999969$

Cl.

J. Gtr.

E. Bass

Vla.

Solo

60 $\text{♩} = 69,000015$ $\text{♩} = 69,999973$

J. Gtr.

E. Bass

Vla.

Solo

$\text{♩} = 60,999973$

$\text{♩} = 69,000015$

J. Gtr. TAB

5	5	5	12	12	12	12
5	5	5	14	14	14	14
0	4	0			0	0

E. Bass

Vla.

Solo

Bee Gees - Words

Clarinet in B \flat

$\text{♩} = 82,000038$

4

9

14

19

25

30

35

Clarinet in B \flat

41



46



51



56

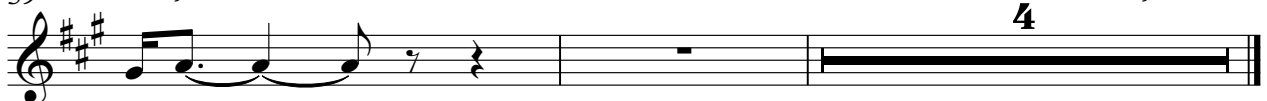
$\text{♩} = 78,999969$ $\text{♩} = 75,999969$ $\text{♩} = 72,999985$ $\text{♩} = 69,999992$ $\text{♩} = 65,999992$



59

$\text{♩} = 75,999969$

$\text{♩} = 69,000015 = 60,999$



Horn in F

Bee Gees - Words

♩ = 82,000038

32 8

44

4

54

♩ = 78,000069 ♩ = 69,000073

2 4

Bee Gees - Words

Percussion

♩ = 82,000038

20

23

26

29

33

36

39

42

45

49

V.S.

2

Percussion

53

56

♩ = 78, 0 9975, 0 9990 6972, 0 9908 50, 0 9959 2900, 0 00969

♩ = 69, 0 060, 0 99973

♩ = 82,000038

2



9



16



21



26



30



35



40



45



50



V.S.

2

Fretless Electric Bass

55

♩ = 78, 9975699969 74, 998892992, 6000069

60

♩ = 69, 60, 999973

Bee Gees - Words

Viola

♩ = 82,000038

20

26

35

40

45

53

♩ = 78,9999699969 ♩ = 78,9999699969

60

♩ = 60,999973

♩ = 69,000015

Bee Gees - Words

Solo

♩ = 82,000038

4

8

13

17

21

25

28

31

35

V.S.

Solo

39

42

45

48

53

♩ = 78,999,969 6972,969,929,98920

59

♩ = 75,999969

♩ = 69,000,1599973

62