

# Okeiyi\_Athanasius-O\_Lord\_My\_Strength

$\text{♩} = 60,960075$

Soprano  
Alto  
Tenor  
Bass  
Violin 1  
Violin 2  
Viola  
Cello

$\text{♩} = 60,960075$

Detailed description: This block contains the first system of a musical score. It features eight staves: Soprano, Alto, Tenor, Bass, Violin 1, Violin 2, Viola, and Cello. The tempo is marked as quarter note = 60,960075. The key signature has one flat (Bb) and the time signature is 4/4. The Soprano part begins with a quarter rest, followed by a series of eighth and quarter notes. The Alto part starts with a quarter note, followed by eighth and quarter notes. The Tenor part starts with a quarter note, followed by eighth and quarter notes. The Bass part starts with a quarter note, followed by eighth and quarter notes. The string parts (Violin 1, Violin 2, Viola, Cello) provide harmonic support with various rhythmic patterns, including eighth and quarter notes.



10

Soprano  
Alto  
Tenor  
Bass  
Violin 1  
Violin 2  
Viola  
Cello

Detailed description: This block contains the second system of the musical score, starting at measure 10. It features the same eight staves as the first system. The Soprano part continues with quarter and eighth notes, ending with a whole rest. The Alto part continues with quarter and eighth notes, ending with a whole rest. The Tenor part continues with quarter and eighth notes, ending with a whole rest. The Bass part continues with quarter and eighth notes, ending with a whole rest. The string parts continue with their respective rhythmic patterns, providing harmonic support for the vocal lines.

18  $\text{♩} = 60,960075$

Soprano

Alto

Tenor

Bass

Violin 1

Violin 2

Viola

Cello



27

Soprano

Alto

Tenor

Bass

Violin 1

Violin 2

Viola

Cello

35  $\text{♩} = 60,960075$

Soprano

Alto

Tenor

Bass

Violin 1

Violin 2

Viola

Cello



44

Soprano

Alto

Tenor

Bass

Violin 1

Violin 2

Viola

Cello

52  $\text{♩} = 69,960875$

Soprano

Alto

Tenor

Bass

Violin 1

Violin 2

Viola

Cello



61

Soprano

Alto

Tenor

Bass

Violin 1

Violin 2

Viola

Cello

67

Soprano

Alto

Tenor

Bass

Violin 1

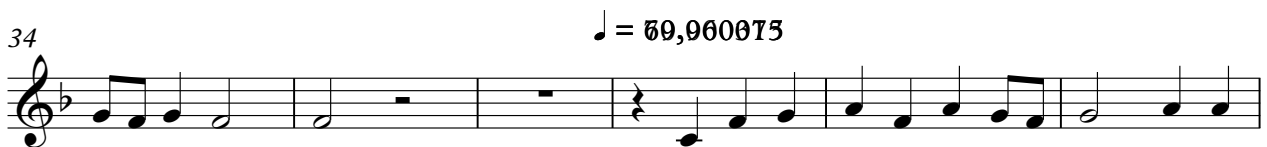
Violin 2

Viola

Cello

# Soprano Okeiyi\_Athanasius-O\_Lord\_My\_Strength

♩ = 69,960075



2

Soprano

55 ♪ = 69,960075



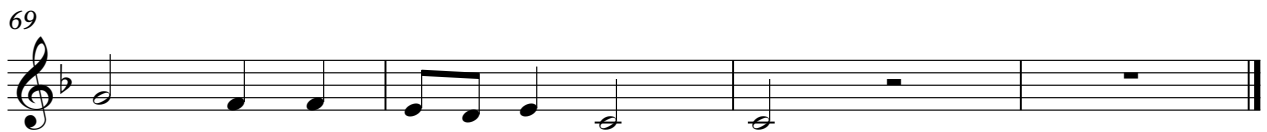
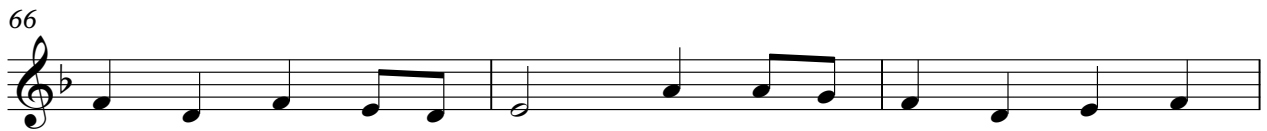




2

Alto

55 ♪ = 69,960075



# Tenor Okeiyi\_Athanasius-O\_Lord\_My\_Strength

Tenor

♩ = 69,960075

6

11

17 ♩ = 69,960075

23

28

34 ♩ = 69,960075

40

46

50



# Bass Okeiyi\_Athanasius-O\_Lord\_My\_Strength

♩ = 79,960075



7



12



17

♩ = 79,960075



23

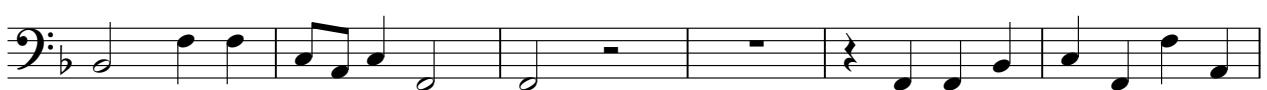


28



33

♩ = 79,960075



39



45



49





# Violin 1 Okeiyi\_Athanasius-O\_Lord\_My\_Strength

♩ = 69,960075



V.S.

2

Violin 1

58



64



68



# Violin 2 Okeiyi\_Athanasius-O\_Lord\_My\_Strength

♩ = 69,960075



6



11



17

♩ = 69,960075



23



28



34

♩ = 69,960075



40



46



52

♩ = 69,960075



V.S.



2

Violin 2

58



64

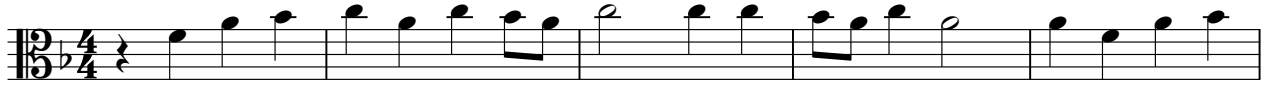


68



Viola Okeiyi\_Athanasius-O\_Lord\_My\_Strength

♩ = 69,960075



V.S.

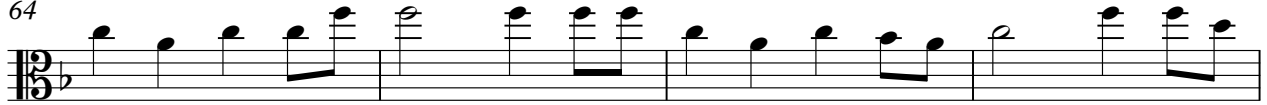
2

Viola

58



64



68



Cello Okeiyi\_Athanasius-O\_Lord\_My\_Strength

♩ = 69,960075



7



12



18

♩ = 69,960075



24



29



34

♩ = 69,960075



40



46



51

♩ = 69,960075



V.S.

2

Cello

57



63



68

