

# Bluegrass - Wabash Cannonball

0.0"  
1.1,00  
Wabash Cannonball - sequenced by R. G. Allen

♩ = 129,000076

Train Whistle

Whistle Echo

4 ~~XXXXXXXXXXXXXXXXXXXX~~ 3276,900275

Train Whistle

Whistle Echo

Rhythm Guitar

Banjo

Bass

~~XXXXXXXXXXXXXXXXXXXX~~ 3276,900275

Fiddle

8

Rhythm Guitar

Banjo

Bass

Fiddle

11

Rhythm Guitar

Banjo

Bass

Fiddle

14

Rhythm Guitar

Banjo

Bass

Fiddle

17

Rhythm Guitar

Banjo

Bass

Fiddle

20

Rhythm Guitar

Banjo

Bass

Fiddle

23

Rhythm Guitar

Banjo

Bass

Fiddle

25

Rhythm Guitar

Banjo

Bass

Fiddle

28

Rhythm Guitar

Banjo

Bass

Fiddle

31

Rhythm Guitar

Banjo

Bass

Fiddle

34

Rhythm Guitar

Banjo

Bass

Fiddle

37

Rhythm Guitar

Banjo

Bass

Fiddle

40

Rhythm Guitar

Banjo

Bass

Fiddle

43

Rhythm Guitar

Banjo

Bass

Fiddle

46

Rhythm Guitar

Banjo

Bass

Fiddle

49

Rhythm Guitar

Banjo

Bass

Fiddle

52

Rhythm Guitar

Banjo

Bass

Fiddle

55

Rhythm Guitar

Banjo

Bass

Fiddle

58

Rhythm Guitar

Banjo

Bass

Fiddle

61

Rhythm Guitar

Banjo

Bass

Fiddle

Detailed description of measures 61-63: The Rhythm Guitar part consists of two staves, Treble (T) and Bass (B). In measure 61, the T staff has fret numbers 2, 3, 0, 2 and the B staff has 3, 5. In measure 62, the T staff has 2, 3, 0, 2 and the B staff has 0, 5, 0, 5. In measure 63, the T staff has 0, 0, 0, 0 and the B staff has 0, 5, 0, 5. The Banjo part has two staves. In measure 61, the top staff has fret numbers 8, 8 and the bottom staff has 7, 7. In measure 62, the top staff has 8, 8 and the bottom staff has 7, 7. In measure 63, the top staff has 8, 8 and the bottom staff has 7, 7. The Bass part has a single staff with notes: G2 (quarter), B1 (quarter), D2 (quarter), G2 (quarter) in measure 61; G2 (quarter), B1 (quarter), D2 (quarter), G2 (quarter) in measure 62; G2 (quarter), B1 (quarter), D2 (quarter), G2 (quarter) in measure 63. The Fiddle part has a single staff with notes and chords: G4 (quarter), B4 (quarter), D5 (quarter), G5 (quarter) in measure 61; G4 (quarter), B4 (quarter), D5 (quarter), G5 (quarter) in measure 62; G4 (quarter), B4 (quarter), D5 (quarter), G5 (quarter) in measure 63.

64

Rhythm Guitar

Banjo

Bass

Fiddle

Detailed description of measures 64-66: The Rhythm Guitar part consists of two staves, Treble (T) and Bass (B). In measure 64, the T staff has fret numbers 0, 2, 0, 2 and the B staff has 5, 3. In measure 65, the T staff has 0, 2, 0, 2 and the B staff has 5, 5. In measure 66, the T staff has 0, 2, 0, 2 and the B staff has 5, 5. The Banjo part has two staves. In measure 64, the top staff has fret numbers 7, 8 and the bottom staff has 5, 7-5. In measure 65, the top staff has 7, 7 and the bottom staff has 5, 5. In measure 66, the top staff has 7, 7 and the bottom staff has 5, 5. The Bass part has a single staff with notes: G2 (quarter), B1 (quarter), D2 (quarter), G2 (quarter) in measure 64; G2 (quarter), B1 (quarter), D2 (quarter), G2 (quarter) in measure 65; G2 (quarter), B1 (quarter), D2 (quarter), G2 (quarter) in measure 66. The Fiddle part has a single staff with notes and chords: G4 (quarter), B4 (quarter), D5 (quarter), G5 (quarter) in measure 64; G4 (quarter), B4 (quarter), D5 (quarter), G5 (quarter) in measure 65; G4 (quarter), B4 (quarter), D5 (quarter), G5 (quarter) in measure 66.

67

Rhythm Guitar

Banjo

Bass

Fiddle

Detailed description of measures 67-69: The Rhythm Guitar part consists of two staves, Treble (T) and Bass (B). In measure 67, the T staff has fret numbers 0, 2, 0, 2 and the B staff has 5, 3. In measure 68, the T staff has 2, 3, 0, 2 and the B staff has 3, 5. In measure 69, the T staff has 2, 3, 0, 2 and the B staff has 3, 5. The Banjo part has two staves. In measure 67, the top staff has fret numbers 7, 7 and the bottom staff has 5, 5. In measure 68, the top staff has 8, 8 and the bottom staff has 5, 7-5. In measure 69, the top staff has 8, 8 and the bottom staff has 5, 5. The Bass part has a single staff with notes: G2 (quarter), B1 (quarter), D2 (quarter), G2 (quarter) in measure 67; G2 (quarter), B1 (quarter), D2 (quarter), G2 (quarter) in measure 68; G2 (quarter), B1 (quarter), D2 (quarter), G2 (quarter) in measure 69. The Fiddle part has a single staff with notes and chords: G4 (quarter), B4 (quarter), D5 (quarter), G5 (quarter) in measure 67; G4 (quarter), B4 (quarter), D5 (quarter), G5 (quarter) in measure 68; G4 (quarter), B4 (quarter), D5 (quarter), G5 (quarter) in measure 69.



70

Rhythm Guitar

Banjo

Bass

Fiddle

73

Solo Guitar

Rhythm Guitar

Banjo

Bass

Fiddle

75

Solo Guitar

Rhythm Guitar

Banjo

Bass

Fiddle

78

Solo Guitar

Rhythm Guitar

Banjo

Bass

Fiddle

81

Solo Guitar

Rhythm Guitar

Banjo

Bass

Fiddle

84

Solo Guitar

Rhythm Guitar

Banjo

Bass

Fiddle

87

Solo Guitar

Rhythm Guitar

Banjo

Bass

Fiddle

89

Solo Guitar

Rhythm Guitar

Banjo

Bass

Fiddle

91

Solo Guitar

Rhythm Guitar

Banjo

Bass

Fiddle

93

Solo Guitar

Rhythm Guitar

Banjo

Bass

Fiddle

96

Solo Guitar

Rhythm Guitar

Banjo

Bass

Fiddle

99

Solo Guitar

Rhythm Guitar

Banjo

Bass

Fiddle

102

Solo Guitar

Rhythm Guitar

Banjo

Bass

Fiddle

105

Solo Guitar

Rhythm Guitar

Banjo

Bass

Fiddle

108

Solo Guitar

Rhythm Guitar

Banjo

Bass

Fiddle

110

Rhythm Guitar

Banjo

Bass

Fiddle



Rhythm Guitar

Banjo

Bass

Fiddle

Rhythm Guitar

Banjo

Bass

Fiddle

Rhythm Guitar

Banjo

Bass

Fiddle

122

Rhythm Guitar

Banjo

Bass

Fiddle

125

Rhythm Guitar

Banjo

Bass

Fiddle

127

Rhythm Guitar

Banjo

Bass

Fiddle

130

Rhythm Guitar

Banjo

Bass

Fiddle

133

Rhythm Guitar

Banjo

Bass

Fiddle

136

Rhythm Guitar

Banjo

Bass

Fiddle

139

Rhythm Guitar

Banjo

Bass

Fiddle

142

Rhythm Guitar

Banjo

Bass

Fiddle

144

♩ = 162,000168

Rhythm Guitar

Banjo

Bass

Fiddle

♩ = 162,000168

Train Whistle

Bluegrass - Wabash Cannonball

♪ = 129,000076

Musical notation for the first staff of 'Train Whistle' in 4/4 time. It features a treble clef, a key signature of one sharp (F#), and a tempo marking of 129,000076. The notation includes eighth notes, quarter notes, and half notes with ties, ending with a double bar line.

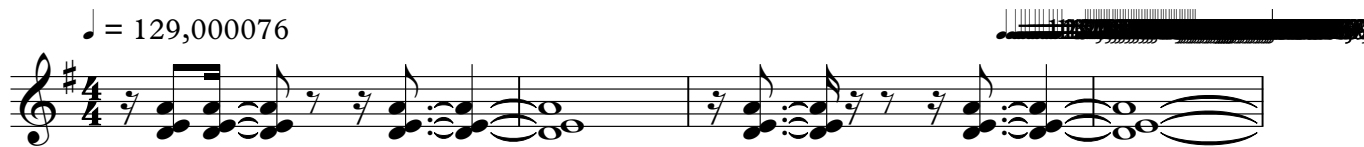
5 ♪ = 229,9996,900275 **138** ♪ = 162,000168

Musical notation for the second staff of 'Train Whistle' in 4/4 time. It features a treble clef, a key signature of one sharp (F#), and a tempo marking of 229,9996,900275. The notation starts with a measure containing a whole note chord, followed by a long horizontal bar representing a sustained sound or a long note, and ends with a double bar line. A measure number '138' is centered above the bar, and a tempo marking '♪ = 162,000168' is at the end.

Whistle Echo

Bluegrass - Wabash Cannonball

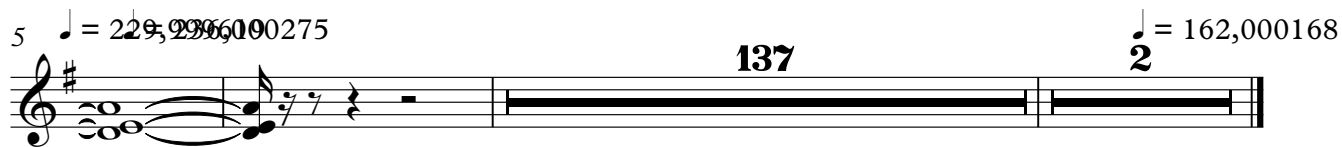
♩ = 129,000076



5 ♩ = 229,296,100275

**137**

2 ♩ = 162,000168



Bluegrass - Wabash Cannonball

Solo Guitar

♩ = 129,000076 **2** ~~7514~~ ♩ = 236,000275 **69**

75

79

83

87

91

95

99

103

107

**35** ♩ = 162,000168 **2**

# Bluegrass - Wabash Cannonball

## Rhythm Guitar

♩ = 129,000076 ~~XXXXXXXXXXXXXXXXXXXXXXXXXXXX~~ 210275

**2**

D						0	0	0	0	0	0			
T						2	2	2	2	2	2			
A						0	0	0	0	0	0			
G						0	0	0	0	0	0			
B						5								
D														

9

T	2	2	2	2	0	0	0	0	0	2	0	0		
A	3	3	3	3	5	5	5	5	5	3	2	2		
B	3	5	3	5	0	5	0	5	0	5	3	5		

15

T	0	0	0	0	2	2	2	2	0	0	0	0		
A	0	0	0	0	3	3	3	3	5	5	4	4		
B	5	0	0	0	3	5	2	3	0	5	0	5		

21

T	0	0	0	0	0	0	0	0	0	0	0	0		
A	5	5	5	5	2	2	2	2	0	0	0	0		
B	0	5	0	5	5	0	0	0	5	0	0	0		

25

T	0	0	2	2	2	2	0	0	0	0	2	2		
A	0	0	3	0	0	2	5	5	5	5	0	0		
B	5	0	3	3	2	2	0	4	4	4	4	0		

31

T	0	0	0	0	0	0	2	2	2	2	0	0		
A	2	2	2	2	2	2	3	3	3	3	5	5		
B	0	0	0	0	0	0	2	2	2	2	4	4		

37

T	0	0	0	0	0	0	0	0	0	0	0	0		
A	5	5	5	5	5	5	0	0	0	0	0	0		
B	0	5	0	5	0	5	0	0	0	0	0	0		

42

T	0	0	2	2	2	2	0	0	0	0	0	2		
A	0	0	3	0	0	3	5	5	5	5	5	2		
B	5	0	3	3	2	2	0	4	4	4	4	0		

48

T	0	0	0	0	0	0	2	2	2	2	0	0		
A	2	2	2	2	2	2	3	3	3	3	5	5		
B	0	0	0	0	0	0	0	0	0	0	4	4		

54

T	0	0	0	0	0	0	0	0	0	0	0	0		
A	5	5	5	5	5	5	2	2	2	2	0	0		
B	4	4	4	4	4	4	0	0	0	0	0	0		

V.S.



Rhythm Guitar

58

Tab for measure 58. Treble clef. Staff 1 (T): 0 2 2 0 0 2 2 2 2 0 0. Staff 2 (A): 0 0 0 0 0 0 0 0 0 5 5. Staff 3 (B): 0 0 0 0 0 3 2 2 2 4 4. Fingering: 5, 5, 3, 5, 5, 0.

63

Tab for measure 63. Treble clef. Staff 1 (T): 0 0 0 2 0 0 0 0 2 2. Staff 2 (A): 5 5 0 3 0 0 0 0 3 3. Staff 3 (B): 4 4 0 2 0 0 0 0 2 2. Fingering: 0, 5, 5, 5, 5, 5, 3, 5.

69

Tab for measure 69. Treble clef. Staff 1 (T): 2 2 0 0 0 0 0 0 0 0. Staff 2 (A): 3 3 0 0 0 0 0 0 0 0. Staff 3 (B): 2 2 4 4 5 5 4 4 5 5. Fingering: 3, 5, 0, 5, 5, 5, 5, 5.

74

Tab for measure 74. Treble clef. Staff 1 (T): 0 0 0 0 2 2 2 2. Staff 2 (A): 0 0 0 0 3 3 3 3. Staff 3 (B): 0 0 0 0 2 2 2 2. Fingering: 5, 14, 17, 5, 10, 12, 3, 5, 3, 5.

79

Tab for measure 79. Treble clef. Staff 1 (T): 0 0 0 2 0 0 0 0. Staff 2 (A): 5 5 5 3 0 0 0 0. Staff 3 (B): 4 4 4 2 0 0 0 0. Fingering: 0, 5, 0, 5, 0, 5, 3, 5, 5, 5.

85

Tab for measure 85. Treble clef. Staff 1 (T): 2 2 2 2 0 0 0 0. Staff 2 (A): 3 3 3 3 5 5 5 5. Staff 3 (B): 0 0 0 0 4 4 4 4. Fingering: 3, 5, 3, 5, 0, 5, 0, 5, 0, 5, 5.

91

Tab for measure 91. Treble clef. Staff 1 (T): 0 0 0 2 0 0 2 2. Staff 2 (A): 0 0 0 3 0 0 3 3. Staff 3 (B): 0 0 0 2 0 0 2 2. Fingering: 5, 5, 0, 0, 5, 0, 0, 3, 3, 5, 5.

95

Tab for measure 95. Treble clef. Staff 1 (T): 2 2 0 0 0 2 0 0. Staff 2 (A): 3 3 5 5 0 3 0 0. Staff 3 (B): 0 0 4 4 5 2 0 0. Fingering: 3, 5, 0, 5, 0, 5, 3, 5, 5, 5.

101

Tab for measure 101. Treble clef. Staff 1 (T): 0 0 2 2 2 2 0 0. Staff 2 (A): 0 0 3 3 3 3 5 5. Staff 3 (B): 0 0 2 2 2 2 4 4. Fingering: 5, 3, 5, 3, 5, 5, 0, 5, 0, 5, 0, 5, 0, 5.

107

Tab for measure 107. Treble clef. Staff 1 (T): 0 0 0 0 0 0 0 0. Staff 2 (A): 2 2 0 0 2 2 2 2. Staff 3 (B): 0 0 0 0 5 5 5 5. Fingering: 5, 5, 12, 10, 17, 5, 5.

111

Guitar tab for exercise 111. The tab consists of six measures. The strings are labeled T (top), A (middle), and B (bottom). Fingerings are indicated by numbers 0-5. The first measure has a triplet of 3 notes (2, 3, 0) on the T string and a triplet of 3 notes (2, 2, 0) on the A string, with a 5 on the B string. The second measure has a triplet of 3 notes (2, 3, 0) on the T string and a triplet of 3 notes (2, 2, 0) on the A string, with a 5 on the B string. The third measure has a 0 on the T string, a 5 on the A string, and a 0 on the B string. The fourth measure has a 0 on the T string, a 5 on the A string, and a 0 on the B string. The fifth measure has a 5 on the T string, a 3 on the A string, and a 2 on the B string. The sixth measure has a 5 on the T string, a 2 on the A string, and a 0 on the B string.

117

Guitar tab for exercise 117. The tab consists of six measures. The strings are labeled T (top), A (middle), and B (bottom). Fingerings are indicated by numbers 0-5. The first measure has a 0 on the T string, a 2 on the A string, and a 0 on the B string. The second measure has a 0 on the T string, a 2 on the A string, and a 0 on the B string. The third measure has a 2 on the T string, a 3 on the A string, and a 0 on the B string. The fourth measure has a 2 on the T string, a 3 on the A string, and a 0 on the B string. The fifth measure has a 0 on the T string, a 5 on the A string, and a 0 on the B string. The sixth measure has a 0 on the T string, a 5 on the A string, and a 0 on the B string.

123

Guitar tab for exercise 123. The tab consists of four measures. The strings are labeled T (top), A (middle), and B (bottom). Fingerings are indicated by numbers 0-5. The first measure has a 0 on the T string, a 5 on the A string, and a 0 on the B string. The second measure has a 0 on the T string, a 5 on the A string, and a 0 on the B string. The third measure has a 0 on the T string, a 5 on the A string, and a 0 on the B string. The fourth measure has a 0 on the T string, a 5 on the A string, and a 0 on the B string.

127

Guitar tab for exercise 127. The tab consists of six measures. The strings are labeled T (top), A (middle), and B (bottom). Fingerings are indicated by numbers 0-5. The first measure has a 0 on the T string, a 2 on the A string, and a 0 on the B string. The second measure has a 2 on the T string, a 3 on the A string, and a 0 on the B string. The third measure has a 2 on the T string, a 3 on the A string, and a 0 on the B string. The fourth measure has a 0 on the T string, a 5 on the A string, and a 0 on the B string. The fifth measure has a 0 on the T string, a 5 on the A string, and a 0 on the B string. The sixth measure has a 0 on the T string, a 5 on the A string, and a 0 on the B string.

133

Guitar tab for exercise 133. The tab consists of six measures. The strings are labeled T (top), A (middle), and B (bottom). Fingerings are indicated by numbers 0-5. The first measure has a 0 on the T string, a 2 on the A string, and a 0 on the B string. The second measure has a 0 on the T string, a 2 on the A string, and a 0 on the B string. The third measure has a 0 on the T string, a 2 on the A string, and a 0 on the B string. The fourth measure has a 2 on the T string, a 3 on the A string, and a 0 on the B string. The fifth measure has a 2 on the T string, a 3 on the A string, and a 0 on the B string. The sixth measure has a 0 on the T string, a 5 on the A string, and a 0 on the B string.

139

Guitar tab for exercise 139. The tab consists of three measures. The strings are labeled T (top), A (middle), and B (bottom). Fingerings are indicated by numbers 0-5. The first measure has a 0 on the T string, a 5 on the A string, and a 0 on the B string. The second measure has a 0 on the T string, a 5 on the A string, and a 0 on the B string. The third measure has a 0 on the T string, a 5 on the A string, and a 0 on the B string.

142

♩ = 162,000168

Guitar tab for exercise 142. The tab consists of two measures. The strings are labeled T (top), A (middle), and B (bottom). Fingerings are indicated by numbers 0-5. The first measure has a 0 on the T string, a 2 on the A string, and a 0 on the B string. The second measure has a 5 on the T string, a 5 on the A string, and a 5 on the B string.

# Bluegrass - Wabash Cannonball

Banjo

♩ = 129,000076 ~~129,000076~~ 0275

**2**

8

12

16

20

24

28

32

36

40

V.S.

Banjo

46

Banjo tablature for measures 46-51. The notation consists of two staves: a top staff for the treble clef and a bottom staff for the bass clef. Fingerings are indicated by numbers 7, 8, and 9. The music features a mix of eighth and sixteenth notes with various rhythmic patterns.

52

Banjo tablature for measures 52-57. The notation consists of two staves: a top staff for the treble clef and a bottom staff for the bass clef. Fingerings are indicated by numbers 7, 8, and 9. The music features a mix of eighth and sixteenth notes with various rhythmic patterns.

58

Banjo tablature for measures 58-63. The notation consists of two staves: a top staff for the treble clef and a bottom staff for the bass clef. Fingerings are indicated by numbers 7, 8, and 9. The music features a mix of eighth and sixteenth notes with various rhythmic patterns.

64

Banjo tablature for measures 64-68. The notation consists of two staves: a top staff for the treble clef and a bottom staff for the bass clef. Fingerings are indicated by numbers 7, 8, and 9. The music features a mix of eighth and sixteenth notes with various rhythmic patterns.

69

Banjo tablature for measures 69-74. The notation consists of two staves: a top staff for the treble clef and a bottom staff for the bass clef. Fingerings are indicated by numbers 7, 8, and 9. The music features a mix of eighth and sixteenth notes with various rhythmic patterns.

75

Banjo tablature for measures 75-80. The notation consists of two staves: a top staff for the treble clef and a bottom staff for the bass clef. Fingerings are indicated by numbers 7, 8, and 9. The music features a mix of eighth and sixteenth notes with various rhythmic patterns.

81

Banjo tablature for measures 81-86. The notation consists of two staves: a top staff for the treble clef and a bottom staff for the bass clef. Fingerings are indicated by numbers 7, 8, and 9. The music features a mix of eighth and sixteenth notes with various rhythmic patterns.

87

Banjo tablature for measures 87-92. The notation consists of two staves: a top staff for the treble clef and a bottom staff for the bass clef. Fingerings are indicated by numbers 7, 8, and 9. The music features a mix of eighth and sixteenth notes with various rhythmic patterns.

93

Banjo tablature for measures 93-98. The notation consists of two staves: a top staff for the treble clef and a bottom staff for the bass clef. Fingerings are indicated by numbers 7, 8, and 9. The music features a mix of eighth and sixteenth notes with various rhythmic patterns.

99

Banjo tablature for measures 99-104. The notation consists of two staves: a top staff for the treble clef and a bottom staff for the bass clef. Fingerings are indicated by numbers 7, 8, and 9. The music features a mix of eighth and sixteenth notes with various rhythmic patterns.

Banjo

105

Musical notation for measure 105, featuring a five-line staff with various notes and fingerings (8, 7, 9, 5, 0, 3, 7, 3, 5, 0).

110

Musical notation for measure 110, featuring a five-line staff with various notes and fingerings (7, 3, 3, 7, 3, 1, 5, 8, 3, 3, 8, 0, 3, 0, 0, 3, 0, 1, 0, 3, 0, 2, 5, 2, 5, 8).

114

Musical notation for measure 114, featuring a five-line staff with various notes and fingerings (7, 2, 0, 5, 2, 0, 5, 0, 3, 0, 0, 3, 0, 0, 0, 3, 7, 0, 0, 2, 0, 2, 0, 2, 0, 2, 0, 2, 0, 2, 0, 5, 2, 4, 5, 2, 0, 0).

118

Musical notation for measure 118, featuring a five-line staff with various notes and fingerings (7, 5, 7, 1, 3, 5, 0, 3, 3, 8, 0, 3, 0, 0, 3, 0, 3, 5, 0, 2, 8, 5, 2).

122

Musical notation for measure 122, featuring a five-line staff with various notes and fingerings (7, 2, 5, 0, 5, 5, 8, 2, 5, 0, 5, 0, 2, 8, 3, 0, 0, 0, 2, 0, 0, 2, 0, 5, 2, 4, 5, 2, 0, 0).

126

Musical notation for measure 126, featuring a five-line staff with various notes and fingerings (0, 0, 7, 3, 5, 0, 7, 3, 3, 7, 3, 1, 5, 8, 3, 3, 8, 0, 3, 0, 0, 3, 0, 1).

130

Musical notation for measure 130, featuring a five-line staff with various notes and fingerings (0, 5, 2, 5, 0, 5, 8, 7, 2, 3, 5, 2, 7, 5, 0, 3, 7, 3, 0, 3, 0, 0, 3, 0, 7, 3, 0, 2).

134

Musical notation for measure 134, featuring a five-line staff with various notes and fingerings (0, 3, 7, 3, 0, 5, 7, 5, 7, 1, 3, 5, 0, 3, 3, 8, 0, 3, 0, 0, 3, 8, 3, 0).

138

Musical notation for measure 138, featuring a five-line staff with various notes and fingerings (2, 5, 0, 2, 8, 5, 2, 7, 8, 5, 0, 5, 2, 5, 7, 2, 5, 0, 5, 0, 2, 8, 3, 3, 5, 7, 3, 0, 7).

142

Musical notation for measure 142, featuring a five-line staff with various notes and fingerings (3, 0, 5, 2, 5, 5, 3, 2, 3, 5, 3, 0, 2, 5, 0, 2, 4, 0, 5, 3, 3, 3, 3, 3, 3, 3, 3, 3).

$\text{♩} = 162,000168$

Bluegrass - Wabash Cannonball

Bass

♩ = 129,000076 ~~129,000076~~ 1900275

2

First staff of music, bass clef, key signature of one sharp (F#), 4/4 time signature. It begins with a whole rest followed by a double bar line, then continues with a sequence of quarter notes: G2, A2, B2, C3, D3, E3, F#3, G3.

Second staff of music, starting at measure 9. It contains a sequence of quarter notes: G2, A2, B2, C3, D3, E3, F#3, G3.

Third staff of music, starting at measure 16. It contains a sequence of quarter notes: G2, A2, B2, C3, D3, E3, F#3, G3.

Fourth staff of music, starting at measure 23. It features a triplet of eighth notes (G2, A2, B2) followed by a quarter rest, then another triplet (C3, D3, E3) followed by a quarter rest, and finally a sequence of quarter notes: F#3, G3, A3, B3, C4, D4, E4, F#4.

Fifth staff of music, starting at measure 28. It contains a sequence of quarter notes: G2, A2, B2, C3, D3, E3, F#3, G3.

Sixth staff of music, starting at measure 35. It contains a sequence of quarter notes: G2, A2, B2, C3, D3, E3, F#3, G3, followed by a triplet of eighth notes (G3, A3, B3) followed by a quarter rest, and another triplet (C4, D4, E4) followed by a quarter rest.

Seventh staff of music, starting at measure 41. It contains a sequence of quarter notes: G2, A2, B2, C3, D3, E3, F#3, G3.

Eighth staff of music, starting at measure 48. It contains a sequence of quarter notes: G2, A2, B2, C3, D3, E3, F#3, G3.

Ninth staff of music, starting at measure 55. It features a triplet of eighth notes (G2, A2, B2) followed by a quarter rest, then another triplet (C3, D3, E3) followed by a quarter rest, and finally a sequence of quarter notes: F#3, G3, A3, B3, C4, D4, E4, F#4.

Tenth staff of music, starting at measure 60. It contains a sequence of quarter notes: G2, A2, B2, C3, D3, E3, F#3, G3.

V.S.

67



74



80



87



92



98



105



111



118



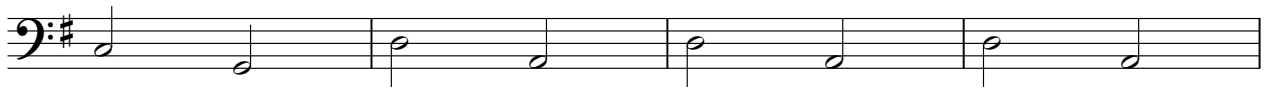
125



130

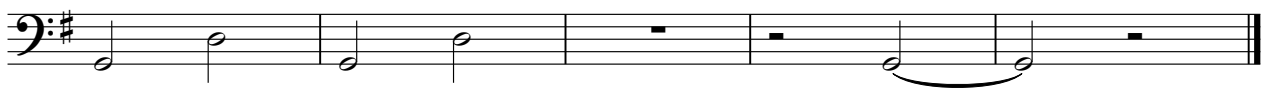


137



141

♩ = 162,000168





# Bluegrass - Wabash Cannonball

Fiddle

♩ = 129,000076 ~~129,000076~~ 129,000275

2

8

12

16

20

24

28

32

36

40

V.S.



84

88

92

96

100

104

108

112

116

120

124



128



132



136



140



142



♩ = 162,000168