

Baggi_Enzo-Folia_for_two_violins_and_basso_continuo

♩ = 50,000000

Harpisichord

Violin

Violin

Sarangi

Solo

4

Vln.

Vln.

Sar.

Solo

7

Vln. Vln. Sar. Solo

Detailed description: This system contains measures 7, 8, and 9. The first violin (Vln.) part has a melodic line starting on G4, moving to A4, B4, and C5. The second violin (Vln.) part has a rhythmic accompaniment of eighth notes. The saranga (Sar.) part has a steady eighth-note accompaniment. The solo part features a complex texture with many beamed notes and rests.

10 ♩ = 79,999786

Vln. Vln. Sar. Solo

Detailed description: This system contains measures 10, 11, and 12. The tempo marking is ♩ = 79,999786. The first violin (Vln.) part continues its melodic line. The second violin (Vln.) part has a more active eighth-note accompaniment. The saranga (Sar.) part continues with its eighth-note accompaniment. The solo part consists of a series of chords and dyads.

13

Vln. Vln. Sar. Solo

Detailed description: This system contains measures 13, 14, and 15. The first violin (Vln.) part has a more active melodic line. The second violin (Vln.) part has a complex accompaniment with many beamed notes. The saranga (Sar.) part continues with its eighth-note accompaniment. The solo part consists of a series of chords and dyads.

16

Vln. Vln. Sar. Solo

This musical system covers measures 16 and 17. It features four staves: two Violin (Vln.) staves, a Saracen (Sar.) staff, and a Solo staff. The key signature has one flat (B-flat). The top two Vln. staves play melodic lines with eighth and sixteenth notes, including slurs and accents. The Sar. staff plays a rhythmic accompaniment of eighth notes. The Solo staff provides a bass line with chords and single notes.

18

Hpsd. Vln. Vln. Sar. Solo

This musical system covers measures 18 and 19. It features five staves: Harpsichord (Hpsd.), two Violin (Vln.) staves, a Saracen (Sar.) staff, and a Solo staff. The key signature has one flat (B-flat). The Hpsd. staff has a whole rest in measure 18 and a melodic phrase in measure 19. The top two Vln. staves play melodic lines with eighth notes and slurs. The Sar. staff plays a rhythmic accompaniment of eighth notes. The Solo staff provides a bass line with chords and single notes.

20

Hpsd. Vln. Vln. Sar. Solo

This system contains measures 20 and 21. The Hpsd. part has a melodic line with a dotted quarter note followed by an eighth note. The Vln. parts have a mix of rests and eighth-note patterns. The Sar. part has a steady eighth-note accompaniment. The Solo part features a complex bass line with many beamed eighth notes.

22

Hpsd. Vln. Vln. Sar. Solo

This system contains measures 22 and 23. The Hpsd. part continues its melodic line with a sharp sign. The Vln. parts have more active eighth-note patterns. The Sar. part continues its accompaniment. The Solo part maintains its complex bass line.

24

Hpsd. Solo

This system contains measures 24 and 25. The Hpsd. part has a more active eighth-note melodic line. The Solo part continues its complex bass line.

26 $\text{♩} = 50,000000$

Hpsd.

Vln.

Solo

29 $\text{♩} = 79,999786$

Vln.

Vln.

Sar.

Solo

32

Vln.

Vln.

Sar.

Solo

34

Vln. Vln. Sar. Solo

This system contains measures 34 and 35. It features four staves: two Violin staves (Vln.), a Saracen staff (Sar.), and a Solo staff. The key signature has one flat (B-flat). Measure 34 shows a complex melodic line in the first violin, a rhythmic accompaniment in the second violin with a triplet of eighth notes, and a steady eighth-note accompaniment in the Saracen and Solo parts. Measure 35 continues the melodic development in the first violin and the accompaniment in the other parts.

36

Vln. Vln. Sar. Solo

This system contains measures 36 and 37. The first violin part features a melodic line with a slur over measures 36 and 37. The second violin part provides a rhythmic accompaniment. The Saracen and Solo parts continue with their respective accompaniment patterns.

38

Vln. Vln. Sar. Solo

This system contains measures 38 and 39. The first violin part has a melodic line with a slur over measures 38 and 39. The second violin part continues with its accompaniment. The Saracen and Solo parts maintain their accompaniment patterns.

40

Vln. Vln. Sar. Solo

This system contains measures 40 and 41. It features four staves: two Violin (Vln.) staves, a Saracen (Sar.) staff, and a Solo staff. The key signature has one flat. The Violin parts have melodic lines with some slurs. The Saracen part has a rhythmic pattern of eighth notes. The Solo part has a complex, multi-layered rhythmic pattern.

42

Vln. Vln. Sar. Solo

This system contains measures 42, 43, and 44. The Violin parts end at measure 42. The Saracen and Solo parts continue through measure 44. The Solo part has a complex rhythmic pattern with some accidentals.

45

Sar.

This system contains measure 45, featuring the Saracen part with a rhythmic pattern of eighth notes.

47

Sar.

This system contains measure 47, featuring the Saracen part with a rhythmic pattern of eighth notes.

50

Sar.

This system contains measure 50, featuring the Saracen part with a rhythmic pattern of eighth notes and two triplet markings (3) over the final notes.

53

Hpsd. Vln. Vln. Sar. Solo

This system contains measures 53, 54, and 55. The Hpsd. part has a rest in measure 53 and then plays a rhythmic pattern of eighth notes. The Vln. parts play a melodic line with some triplets. The Sar. part plays a rhythmic pattern of eighth notes. The Solo part plays a bass line with chords and eighth notes.

56

Hpsd. Vln. Vln. Sar. Solo

This system contains measures 56, 57, and 58. The Hpsd. part has a rest in measure 58. The Vln. parts feature a triplet in measure 58. The Sar. part continues with eighth notes. The Solo part continues with a bass line.

59

Vln. Vln. Solo

This system contains measures 59, 60, and 61. The Vln. parts feature a triplet in measure 59 and a sextuplet in measure 61. The Solo part continues with a bass line.

62

Vln. Vln. Sar. Solo

This system contains measures 62, 63, and 64. It features four staves: Violin I (Vln.), Violin II (Vln.), Saracen (Sar.), and Solo. The Violin I and II parts play a rhythmic eighth-note pattern. The Saracen part plays a steady eighth-note accompaniment. The Solo part provides a harmonic accompaniment with chords and some melodic movement.

65

Vln. Vln. Sar. Solo

This system contains measures 65, 66, and 67. The Violin I and II parts continue their rhythmic patterns. The Saracen part has a brief melodic phrase in measure 65 before remaining silent. The Solo part continues its harmonic accompaniment.

68

Hpsd. Vln. Vln. Sar. Solo

This system contains measures 68, 69, 70, and 71. It introduces a Harpsichord (Hpsd.) part. The Violin I and II parts feature a complex rhythmic pattern with triplets in measures 69 and 70. The Saracen part has a melodic phrase in measure 68 and remains silent thereafter. The Solo part has a melodic phrase in measure 71.

Baggi_Enzo-Folia_for_two_violins_and_basso_continuo

Harpsichord

♩ = 50,000000 ♩ = 79,999786

9 **9**




23



26

♩ = 50,000000 ♩ = 79,999786

3 **23**

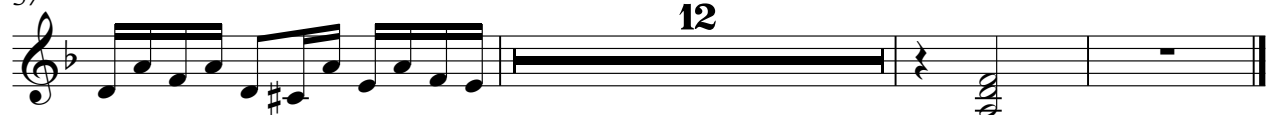


54



57

12



Baggi_Enzo-Folia_for_two_violins_and_basso_continuo

Violin

♩ = 50,000000

7

♩ = 79,999786

13

17

23

♩ = 50,000000

3

31

♩ = 79,999786

35

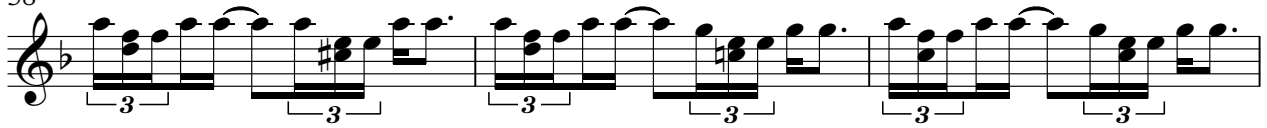
40

11

54



58



61



64



67



Baggi_Enzo-Folia_for_two_violins_and_basso_continuo

Violin

♩ = 50,000000

5

10 ♩ = 79,999786

14

19

23 ♩ = 50,000000 ♩ = 79,999786

3 4

33

37

40

11

Violin

54



57



62



66



68



Baggi_Enzo-Folia_for_two_violins_and_basso_continuo

Sarangi

♩ = 50,000000

6 ♩ = 79,999786

12

15

18

22 ♩ = 50,000000 ♩ = 79,999786

3 4

32

35

38

42 V.S.

Sarangi

45

48

51

54

57

64

Baggi_Enzo-Folia_for_two_violins_and_basso_continuo

Solo

♩ = 50,000000

4

7 = 79,999786

12

17

20

23

26 = 50,000000

29 = 79,999786

33

V.S.

36

39

42

11

56

61

65

4