

Baggi_Enzo-Euphoria

♩ = 183,999969

Violin

Viola

Violoncello

Contrabass

This block contains the first seven measures of the score. The Violin part (treble clef) features a melodic line with a long slur over measures 2-4. The Viola (alto clef), Violoncello (bass clef), and Contrabass (bass clef) parts provide harmonic support with rhythmic patterns of eighth and quarter notes.

8

Vln.

Vla.

Vc.

Cb.

This block contains measures 8 through 14. The Violin part continues its melodic development with a slur over measures 9-11. The other instruments maintain their rhythmic accompaniment.

15

Vln.

Vla.

Vc.

Cb.

This block contains measures 15 through 21. The Violin part concludes with a final melodic phrase. The Viola part has a rest in measure 21. The Violoncello and Contrabass parts continue their accompaniment.

22

Vln.

Vla.

Vc.

Cb.

This system contains measures 22 through 28. The Violin part (Vln.) begins with a treble clef and a key signature of two sharps (F# and C#). It features a melodic line with a long slur over measures 23-24 and another slur over measures 27-28. The Viola (Vla.), Violoncello (Vc.), and Contrabass (Cb.) parts are in bass clef with the same key signature. The Viola and Cello play a rhythmic pattern of eighth notes, while the Contrabass plays a line of half notes.

29

Vln.

Vla.

Vc.

Cb.

This system contains measures 29 through 35. The Violin part (Vln.) continues with a melodic line, featuring a slur over measures 30-31 and another slur over measures 34-35. The Viola (Vla.), Violoncello (Vc.), and Contrabass (Cb.) parts maintain their respective rhythmic patterns from the previous system.

36

Vln.

Vla.

Vc.

Cb.

This system contains measures 36 through 42. The Violin part (Vln.) continues with a melodic line, featuring a slur over measures 37-38 and another slur over measures 41-42. The Viola (Vla.), Violoncello (Vc.), and Contrabass (Cb.) parts maintain their respective rhythmic patterns from the previous system.

41

Vln.

Vla.

Vc.

Cb.

The image shows a musical score for four instruments: Violin (Vln.), Viola (Vla.), Violoncello (Vc.), and Contrabasso (Cb.). The score is written in treble clef for the Violin and bass clef for the other three instruments. The key signature is two sharps (F# and C#). The time signature is 3/8. The score is divided into measures by vertical bar lines. The Violin part starts with a treble clef and a key signature of two sharps. The Viola part starts with a bass clef and a key signature of two sharps. The Violoncello part starts with a bass clef and a key signature of two sharps. The Contrabasso part starts with a bass clef and a key signature of two sharps. The score is numbered 41 at the top left. The Violin part has a melodic line with a slur over the last four measures. The Viola part has a melodic line with a slur over the last two measures. The Violoncello part has a melodic line with a slur over the last two measures. The Contrabasso part has a melodic line with a slur over the last two measures.

Violin

Baggi_Enzo-Euphoria

♩ = 183,999969



10



19



28



38



Viola

Baggi_Enzo-Euphoria

♩ = 183,999969



9



17



25



33



39



Violoncello

Baggi_Enzo-Euphoria

♩ = 183,999969



9



17



25



33



39



Contrabass

Baggi_Enzo-Euphoria

♩ = 183,999969



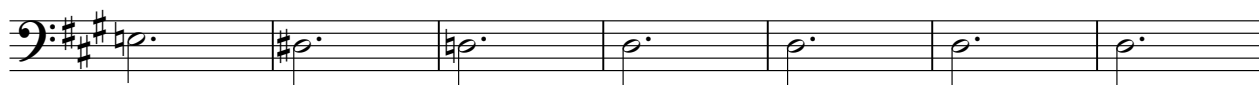
12



22



33



40

