

# Good Charlotte - Keep your hands off my girl

♩ = 138,000198

MELODY

BACKTRACK

\*Dean Buttorworth (Drum)

♩ = 138,000198

\*Billy Martin (Guitar 2)

\*Benji Maiden (Guitar)

\*Paul Thomas (Bass Effect)

\*Paul Thomas (Bass)

AAH's

\*Billy Martin (Keyboard)

\*Billy Martin (Keyboard 2)

MELODY

\*Dean Buttorworth (Drum)

\*Paul Thomas (Bass Effect)

\*Paul Thomas (Bass)

\*Billy Martin (Keyboard)

\*Billy Martin (Keyboard 2)

9

MELODY

\*Dean Buttorworth (Drum)

\*Paul Thomas (Bass Effect)

\*Paul Thomas (Bass)

\*Billy Martin (Keyboard)

\*Billy Martin (Keyboard 2)

12

MELODY

\*Dean Buttorworth (Drum)

\*Paul Thomas (Bass Effect)

\*Paul Thomas (Bass)

\*Billy Martin (Keyboard)

\*Billy Martin (Keyboard 2)

14

MELODY

\*Dean Buttorworth (Drum)

\*Paul Thomas (Bass Effect)

\*Paul Thomas (Bass)

\*Billy Martin (Keyboard)

\*Billy Martin (Keyboard 2)

17

MELODY

\*Dean Buttorworth (Drum)

\*Paul Thomas (Bass Effect)

\*Paul Thomas (Bass)

\*Billy Martin (Keyboard)

\*Billy Martin (Keyboard 2)

19

MELODY

\*Dean Buttorworth (Drum)

\*Paul Thomas (Bass Effect)

\*Paul Thomas (Bass)

\*Billy Martin (Keyboard)

\*Billy Martin (Keyboard 2)

21

MELODY

\*Dean Buttorworth (Drum)

\*Paul Thomas (Bass Effect)

\*Paul Thomas (Bass)

\*Billy Martin (Keyboard)

\*Billy Martin (Keyboard 2)

23

MELODY

\*Dean Buttorworth (Drum)

\*Benji Maiden (Guitar)

\*Paul Thomas (Bass Effect)

\*Paul Thomas (Bass)

\*Billy Martin (Keyboard)

\*Billy Martin (Keyboard 2)



25

MELODY

\*Dean Buttorworth (Drum)

\*Benji Maiden (Guitar)

\*Paul Thomas (Bass Effect)

\*Paul Thomas (Bass)

\*Billy Martin (Keyboard 2)

27

MELODY

\*Dean Buttorworth (Drum)

\*Benji Maiden (Guitar)

\*Paul Thomas (Bass Effect)

\*Paul Thomas (Bass)

\*Billy Martin (Keyboard 2)



29

MELODY

\*Dean Buttorworth (Drum)

\*Benji Maiden (Guitar)

\*Paul Thomas (Bass Effect)

\*Paul Thomas (Bass)

AAH's

\*Billy Martin (Keyboard 2)

32

MELODY

BACKTRACK

\*Dean Buttorworth (Drum)

\*Benji Maiden (Guitar)

T																	
A	2	2	2	2	2	2	2	2	4	4	4	4	4	4	4	4	4
B	0	0	0	0	0	0	0	0	2	2	2	2	2	2	2	2	2

\*Paul Thomas (Bass Effect)

T																	
A																	
B	?	?	?	?	?	?	?	?	?	?	?	?	?	?	?	?	?

\*Paul Thomas (Bass)

AAH's

\*Billy Martin (Keyboard)

\*Billy Martin (Keyboard 2)

34

MELODY

BACKTRACK

\*Dean Buttorworth (Drum)

\*Benji Maiden (Guitar)

\*Paul Thomas (Bass Effect)

\*Paul Thomas (Bass)

AAH's

\*Billy Martin (Keyboard)

\*Billy Martin (Keyboard 2)



36

MELODY

\*Dean Buttorworth (Drum)

\*Benji Maiden (Guitar)

\*Paul Thomas (Bass Effect)

\*Paul Thomas (Bass)

AAH's

\*Billy Martin (Keyboard 2)

38

MELODY

\*Dean Buttorworth (Drum)

\*Benji Maiden (Guitar)

\*Paul Thomas (Bass Effect)

\*Paul Thomas (Bass)

AAH's

\*Billy Martin (Keyboard)

\*Billy Martin (Keyboard 2)



40

MELODY

BACKTRACK

\*Dean Buttorworth (Drum)

\*Benji Maiden (Guitar)

\*Paul Thomas (Bass Effect)

\*Paul Thomas (Bass)

AAH's

\*Billy Martin (Keyboard 2)



42

MELODY

BACKTRACK

\*Dean Buttorworth (Drum)

\*Benji Maiden (Guitar)

\*Paul Thomas (Bass Effect)

\*Paul Thomas (Bass)

\*Billy Martin (Keyboard 2)

Detailed description of the score for measures 42-43: The MELODY staff is in treble clef with a key signature of one flat. The BACKTRACK staff is in treble clef with a key signature of one flat. The Drum staff shows a consistent rhythmic pattern. The Guitar staff shows a series of chords, with a '1' indicating a first fret bend. The Bass Effect staff shows settings for 'T', 'A', and 'B' with question marks. The Bass staff is in bass clef with a key signature of one flat. The Keyboard 2 staff shows sustained chords.



44

MELODY

\*Dean Buttorworth (Drum)

\*Paul Thomas (Bass Effect)

\*Paul Thomas (Bass)

\*Billy Martin (Keyboard)

\*Billy Martin (Keyboard 2)

Detailed description of the score for measures 44-45: The MELODY staff is in treble clef with a key signature of one flat. The Drum staff shows a consistent rhythmic pattern. The Bass Effect staff shows settings for 'T', 'A', and 'B' with question marks. The Bass staff is in bass clef with a key signature of one flat. The Keyboard staff is in treble clef with a key signature of one flat. The Keyboard 2 staff shows chords with accidentals.

46

MELODY

\*Dean Buttorworth (Drum)

\*Paul Thomas (Bass Effect)

\*Paul Thomas (Bass)

\*Billy Martin (Keyboard)

\*Billy Martin (Keyboard 2)

48

MELODY

\*Dean Buttorworth (Drum)

\*Paul Thomas (Bass Effect)

\*Paul Thomas (Bass)

\*Billy Martin (Keyboard)

\*Billy Martin (Keyboard 2)

50

MELODY

\*Dean Buttorworth (Drum)

\*Paul Thomas (Bass Effect)

\*Paul Thomas (Bass)

\*Billy Martin (Keyboard)

\*Billy Martin (Keyboard 2)

52

MELODY

\*Dean Buttorworth (Drum)

\*Benji Maiden (Guitar)

\*Paul Thomas (Bass Effect)

\*Paul Thomas (Bass)

\*Billy Martin (Keyboard)

\*Billy Martin (Keyboard 2)



54

MELODY

\*Dean Buttorworth (Drum)

\*Benji Maiden (Guitar)

\*Paul Thomas (Bass Effect)

\*Paul Thomas (Bass)

\*Billy Martin (Keyboard 2)

56

MELODY

\*Dean Buttorworth (Drum)

\*Billy Martin (Guitar 2)

\*Benji Maiden (Guitar)

\*Paul Thomas (Bass Effect)

\*Paul Thomas (Bass)

\*Billy Martin (Keyboard 2)



59

MELODY

\*Dean Buttorworth (Drum)

\*Billy Martin (Guitar 2)

\*Benji Maiden (Guitar)

\*Paul Thomas (Bass Effect)

\*Paul Thomas (Bass)

AAH's

\*Billy Martin (Keyboard)

\*Billy Martin (Keyboard 2)

61

MELODY

BACKTRACK

\*Dean Buttorworth (Drum)

\*Billy Martin (Guitar 2)

\*Benji Maiden (Guitar)

\*Paul Thomas (Bass Effect)

\*Paul Thomas (Bass)

AAH's

\*Billy Martin (Keyboard)

\*Billy Martin (Keyboard 2)

Staff	Measure 61	Measure 62
T	4 4 4 4 4 4 4 4 4	2 2 2 2 2
A	4 4 4 4 4 4 4 4 4	4 4 4
B	2 2 2 2 2 2 2 2 2	4 4 4

Staff	Measure 61	Measure 62
T	4 4 4 4 4 4 4 4 4	2 2 2 2 2
A	4 4 4 4 4 4 4 4 4	4 4 4
B	2 2 2 2 2 2 2 2 2	4 4 4

Staff	Measure 61	Measure 62
T		
A		
B	? ? ? ? ? ? ? ?	? ? ? 0 0 0 0 0

63

MELODY

BACKTRACK

\*Dean Buttorworth (Drum)

\*Billy Martin (Guitar 2)

\*Benji Maiden (Guitar)

\*Paul Thomas (Bass Effect)

\*Paul Thomas (Bass)

AAH's

\*Billy Martin (Keyboard)

\*Billy Martin (Keyboard 2)

The musical score for page 14, starting at measure 63, is arranged as follows:

- MELODY:** Treble clef, 4/4 time. Measure 63 contains a sequence of eighth notes: G4, A4, B4, C5, B4, A4, G4. Measure 64 contains a dotted quarter note G4, followed by eighth notes F4, E4, and a quarter rest.
- BACKTRACK:** Treble clef, 4/4 time. Measure 63 contains a sequence of eighth notes: G4, A4, B4, C5, B4, A4, G4. Measure 64 contains a dotted quarter note G4, followed by eighth notes F4, E4, and a quarter rest.
- \*Dean Buttorworth (Drum):** Drum notation. Measure 63 shows a pattern of eighth notes on the snare and bass drums. Measure 64 shows a similar pattern with a cymbal crash on the first eighth note.
- \*Billy Martin (Guitar 2):** Treble clef. Tablature for strings 1-6. Measure 63: strings 1-4 have fret 2, strings 5-6 have fret 4. Measure 64: strings 1-4 have fret 2, strings 5-6 have fret 0.
- \*Benji Maiden (Guitar):** Treble clef. Tablature for strings 1-6. Measure 63: strings 1-4 have fret 2, strings 5-6 have fret 4. Measure 64: strings 1-4 have fret 2, strings 5-6 have fret 0.
- \*Paul Thomas (Bass Effect):** Treble clef. Tablature for strings 1-6. Measure 63: strings 1-4 have fret 0, strings 5-6 have fret 0. Measure 64: strings 1-4 have fret 0, strings 5-6 have fret 0.
- \*Paul Thomas (Bass):** Bass clef. Measure 63 contains a sequence of eighth notes: G2, A2, B2, C3, B2, A2, G2. Measure 64 contains a sequence of eighth notes: G2, A2, B2, C3, B2, A2, G2.
- AAH's:** Treble clef. Measure 63 contains a dotted quarter note G4, followed by eighth notes F4, E4, and a quarter rest. Measure 64 contains a dotted quarter note G4, followed by eighth notes F4, E4, and a quarter rest.
- \*Billy Martin (Keyboard):** Treble clef. Measure 63 contains a dotted quarter note G4, followed by eighth notes F4, E4, and a quarter rest. Measure 64 contains a dotted quarter note G4, followed by eighth notes F4, E4, and a quarter rest.
- \*Billy Martin (Keyboard 2):** Bass clef. Measure 63 contains a dotted quarter note G2, followed by eighth notes F2, E2, and a quarter rest. Measure 64 contains a dotted quarter note G2, followed by eighth notes F2, E2, and a quarter rest.

65

MELODY

Musical staff for MELODY in treble clef, showing a sequence of notes and rests.

\*Dean Buttorworth (Drum)

Drum staff showing a rhythmic pattern of eighth notes.

\*Billy Martin (Guitar 2)

T	.	.	.	.	.	.	.	.	.	.	.	.	.	.			
A	4	4	4	4	4	4	4	4	4	4	4	4	2	2	2	2	2
B	2	2	2	2	2	2	2	2	2	2	2	2	4	4	4	.	.

\*Benji Maiden (Guitar)

T	.	.	.	.	.	.	.	.	.	.	.	.	.	.			
A	4	4	4	4	4	4	4	4	4	4	4	4	2	2	2	2	2
B	2	2	2	2	2	2	2	2	2	2	2	2	4	4	4	.	.

\*Paul Thomas (Bass Effect)

T	.	.	.	.	.	.	.	.	.	.	.	.	.	.			
A																	
B	?	?	?	?	?	?	?	?	?	?	?	?	0	0	0	0	0

\*Paul Thomas (Bass)

Bass staff showing a sequence of notes and rests.

AAH's

Musical staff for AAH's in treble clef, showing notes and rests.

\*Billy Martin (Keyboard)

Keyboard staff in treble clef showing notes and rests.

\*Billy Martin (Keyboard 2)

Keyboard staff in bass clef showing notes and rests.

67  
MELODY

\*Dean Buttorworth (Drum)

\*Billy Martin (Guitar 2) 

T	.	.	.	.	.	.	.	.	.	.	.	.	.	.	.	.	.	.	.
A		2	2	2	2	2	2	2	2	2	2	2	2	2	2	2	2	2	2
B	4	4	4					0	0	0	0	0	0	0	0	0	0	0	0

\*Benji Maiden (Guitar) 

T	.	.	.	.	.	.	.	.	.	.	.	.	.	.	.	.	.	.	.
A		2	2	2	2	2	2	2	2	2	2	2	2	2	2	2	2	2	2
B	4	4	4					0	0	0	0	0	0	0	0	0	0	0	0

\*Paul Thomas (Bass Effect) 

T	.	.	.	.	.	.	.	.	.	.	.	.	.	.	.	.	.	.	.
A																			
B	?	?	?	0	0	0	0	0	?	?	?	?	?	?	?	?	?	?	?

\*Paul Thomas (Bass)

AAH's

\*Billy Martin (Keyboard)

\*Billy Martin (Keyboard 2)



69

MELODY

BACKTRACK

\*Dean Buttorworth (Drum)

\*Billy Martin (Guitar 2)

\*Benji Maiden (Guitar)

\*Paul Thomas (Bass Effect)

\*Paul Thomas (Bass)

AAH's

\*Billy Martin (Keyboard 2)

71

MELODY

BACKTRACK

\*Dean Buttorworth (Drum)

\*Billy Martin (Guitar 2)

\*Benji Maiden (Guitar)

\*Paul Thomas (Bass Effect)

\*Paul Thomas (Bass)

\*Billy Martin (Keyboard 2)

73

MELODY

\*Dean Buttorworth (Drum)

\*Billy Martin (Guitar 2)

\*Benji Maiden (Guitar)

\*Paul Thomas (Bass Effect)

\*Paul Thomas (Bass)



75

MELODY

\*Dean Buttorworth (Drum)

\*Billy Martin (Guitar 2)

\*Benji Maiden (Guitar)

\*Paul Thomas (Bass Effect)

\*Paul Thomas (Bass)

77

MELODY

\*Dean Buttorworth (Drum)

\*Billy Martin (Guitar 2)

\*Benji Maiden (Guitar)

\*Paul Thomas (Bass Effect)

\*Paul Thomas (Bass)

\*Billy Martin (Keyboard 2)



79

MELODY

\*Dean Buttorworth (Drum)

\*Billy Martin (Guitar 2)

\*Benji Maiden (Guitar)

\*Paul Thomas (Bass Effect)

\*Paul Thomas (Bass)

\*Billy Martin (Keyboard 2)

81

MELODY

\*Dean Buttorworth (Drum)

\*Billy Martin (Guitar 2)

\*Benji Maiden (Guitar)

\*Paul Thomas (Bass Effect)

\*Paul Thomas (Bass)

\*Billy Martin (Keyboard 2)



83

MELODY

\*Dean Buttorworth (Drum)

\*Billy Martin (Guitar 2)

\*Benji Maiden (Guitar)

\*Paul Thomas (Bass Effect)

\*Paul Thomas (Bass)

\*Billy Martin (Keyboard 2)

85

MELODY

\*Dean Buttorworth (Drum)

\*Billy Martin (Guitar 2)

\*Benji Maiden (Guitar)

\*Paul Thomas (Bass Effect)

\*Paul Thomas (Bass)

\*Billy Martin (Keyboard 2)



87

MELODY

BACKTRACK

\*Dean Buttorworth (Drum)

\*Billy Martin (Guitar 2)

\*Benji Maiden (Guitar)

\*Paul Thomas (Bass Effect)

\*Paul Thomas (Bass)

\*Billy Martin (Keyboard 2)

89

MELODY

BACKTRACK

\*Dean Buttorworth (Drum)

\*Billy Martin (Keyboard 2)



91

MELODY

BACKTRACK

\*Dean Buttorworth (Drum)

\*Billy Martin (Keyboard)

\*Billy Martin (Keyboard 2)



93

MELODY

\*Dean Buttorworth (Drum)

*Billy Martin (Guitar 2)	
T	
A	2 2 2 2 2 2 2 2 4 4 4 4 4 4 4 4
B	0 0 0 0 0 0 0 0 2 2 2 2 2 2 2 2

*Benji Maiden (Guitar)	
T	
A	2 2 2 2 2 2 2 2 4 4 4 4 4 4 4 4
B	0 0 0 0 0 0 0 0 2 2 2 2 2 2 2 2

*Paul Thomas (Bass Effect)	
T	
A	
B	? ? ? ? ? ? ? ? ? ? ? ? ? ?

\*Paul Thomas (Bass)

\*Billy Martin (Keyboard 2)

95

MELODY

Musical staff for MELODY in treble clef. The notation consists of eighth and quarter notes with various rests and accidentals.

\*Dean Buttorworth (Drum)

Drum staff for \*Dean Buttorworth (Drum) showing a rhythmic pattern of eighth and quarter notes.

\*Billy Martin (Guitar 2)

Guitar tab for \*Billy Martin (Guitar 2) with strings T, A, B and fret numbers 4, 4, 4 and 2, 2, 2, 2, 2.

\*Benji Maiden (Guitar)

Guitar tab for \*Benji Maiden (Guitar) with strings T, A, B and fret numbers 4, 4, 4 and 2, 2, 2, 2, 2.

\*Paul Thomas (Bass Effect)

Guitar tab for \*Paul Thomas (Bass Effect) with strings T, A, B and fret numbers 0, 0, 0, 0, 0 and 0, 0, 0, 0, 0.

\*Paul Thomas (Bass)

Bass staff for \*Paul Thomas (Bass) in bass clef with notes and rests.

AAH's

Musical staff for AAH's in treble clef, mostly empty with a few notes.

\*Billy Martin (Keyboard)

Musical staff for \*Billy Martin (Keyboard) in treble clef with chords and notes.

\*Billy Martin (Keyboard 2)

Musical staff for \*Billy Martin (Keyboard 2) in bass clef with sustained notes.

97

MELODY

BACKTRACK

\*Dean Buttorworth (Drum)

\*Billy Martin (Guitar 2)

\*Benji Maiden (Guitar)

\*Paul Thomas (Bass Effect)

\*Paul Thomas (Bass)

AAH's

\*Billy Martin (Keyboard 2)

The musical score for page 24, measures 97-98, is as follows:

- MELODY:** Treble clef, key signature of one sharp (F#). Measure 97: F#4 quarter note, G4 quarter note, A4 quarter note, B4 quarter note, C5 quarter note, D5 quarter note, E5 quarter note, F#5 quarter note. Measure 98: F#5 quarter note, G5 quarter note, A5 quarter note, B5 quarter note, C6 quarter note, D6 quarter note, E6 quarter note, F#6 quarter note.
- BACKTRACK:** Treble clef. Measure 97: Rest. Measure 98: Rest, F#4 quarter note, G4 quarter note, A4 quarter note, B4 quarter note.
- \*Dean Buttorworth (Drum):** Drum notation. Measure 97: \* (snare), quarter notes on bass and snare. Measure 98: quarter notes on bass and snare.
- \*Billy Martin (Guitar 2):** Tablature. Measure 97: T, A (2 2 2 2 2 2 2 2), B (0 0 0 0 0 0 0 0). Measure 98: T, A (4 4 4 4 4 4 4 4), B (2 2 2 2 2 2 2 2).
- \*Benji Maiden (Guitar):** Tablature. Measure 97: T, A (2 2 2 2 2 2 2 2), B (0 0 0 0 0 0 0 0). Measure 98: T, A (4 4 4 4 4 4 4 4), B (2 2 2 2 2 2 2 2).
- \*Paul Thomas (Bass Effect):** Tablature. Measure 97: T, A, B ( ? ? ? ? ? ? ? ? ). Measure 98: T, A, B ( ? ? ? ? ? ? ? ? ).
- \*Paul Thomas (Bass):** Bass clef. Measure 97: F#2 quarter note, G2 quarter note, A2 quarter note, B2 quarter note, C3 quarter note, D3 quarter note, E3 quarter note, F#3 quarter note. Measure 98: F#3 quarter note, G3 quarter note, A3 quarter note, B3 quarter note, C4 quarter note, D4 quarter note, E4 quarter note, F#4 quarter note.
- AAH's:** Treble clef. Measure 97: F#4 quarter note, G4 quarter note, A4 quarter note, B4 quarter note, C5 quarter note, D5 quarter note, E5 quarter note, F#5 quarter note. Measure 98: F#5 quarter note, G5 quarter note, A5 quarter note, B5 quarter note, C6 quarter note, D6 quarter note, E6 quarter note, F#6 quarter note.
- \*Billy Martin (Keyboard 2):** Bass clef. Measure 97: F#2 whole note. Measure 98: F#2 whole note.



99

MELODY

BACKTRACK

\*Dean Buttorworth (Drum)

\*Billy Martin (Guitar 2)

\*Benji Maiden (Guitar)

\*Paul Thomas (Bass Effect)

\*Paul Thomas (Bass)

AAH's

\*Billy Martin (Keyboard)

\*Billy Martin (Keyboard 2)



101

MELODY

\*Dean Buttorworth (Drum)

\*Billy Martin (Guitar 2)

\*Benji Maiden (Guitar)

\*Paul Thomas (Bass Effect)

\*Paul Thomas (Bass)

\*Billy Martin (Keyboard 2)

103

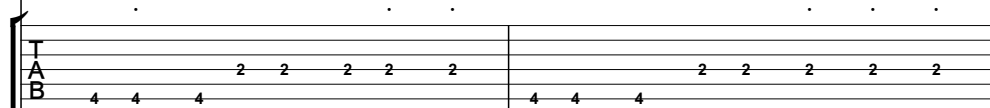
MELODY



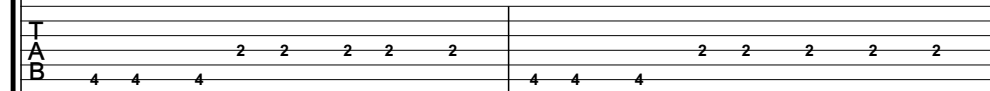
\*Dean Buttorworth (Drum)



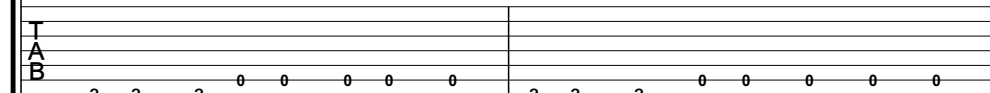
\*Billy Martin (Guitar 2)



\*Benji Maiden (Guitar)



\*Paul Thomas (Bass Effect)



\*Paul Thomas (Bass)



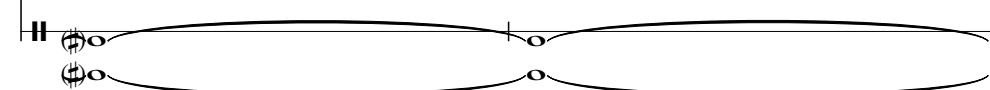
AAH's



\*Billy Martin (Keyboard)



\*Billy Martin (Keyboard 2)



105

MELODY

Musical staff for MELODY, showing a sequence of notes in a treble clef with a key signature of one sharp (F#).

BACKTRACK

Musical staff for BACKTRACK, showing a sequence of notes in a treble clef with a key signature of one sharp (F#).

\*Dean Buttorworth (Drum)

Drum staff for Dean Buttorworth, showing a rhythmic pattern with a double bar line and a star symbol at the beginning.

\*Billy Martin (Guitar 2)

T															
A	2	2	2	2	2	2	2	2	4	4	4	4	4	4	4
B	0	0	0	0	0	0	0	0	2	2	2	2	2	2	2

\*Benji Maiden (Guitar)

T															
A	2	2	2	2	2	2	2	2	4	4	4	4	4	4	4
B	0	0	0	0	0	0	0	0	2	2	2	2	2	2	2

\*Paul Thomas (Bass Effect)

T														
A														
B	?	?	?	?	?	?	?	?	?	?	?	?	?	?

\*Paul Thomas (Bass)

Musical staff for Paul Thomas (Bass), showing a sequence of notes in a bass clef with a key signature of one sharp (F#).

AAH's

Musical staff for AAH's, showing a sequence of notes in a treble clef with a key signature of one sharp (F#).

\*Billy Martin (Keyboard 2)

Keyboard staff for Billy Martin, showing a sequence of notes in a bass clef with a key signature of one sharp (F#).

107

MELODY

BACKTRACK

\*Dean Buttorworth (Drum)

\*Billy Martin (Guitar 2)

\*Benji Maiden (Guitar)

\*Paul Thomas (Bass Effect)

\*Paul Thomas (Bass)

AAH's

\*Billy Martin (Keyboard 2)



109

MELODY

\*Dean Buttorworth (Drum)

\*Paul Thomas (Bass Effect)

\*Paul Thomas (Bass)

\*Billy Martin (Keyboard)

\*Billy Martin (Keyboard 2)

111

MELODY

\*Dean Buttorworth (Drum)

\*Paul Thomas (Bass Effect)

\*Paul Thomas (Bass)

\*Billy Martin (Keyboard)

\*Billy Martin (Keyboard 2)



113

MELODY

\*Dean Buttorworth (Drum)

\*Paul Thomas (Bass Effect)

\*Paul Thomas (Bass)

\*Billy Martin (Keyboard)

\*Billy Martin (Keyboard 2)



115

MELODY

BACKTRACK

\*Dean Buttorworth (Drum)

\*Billy Martin (Keyboard 2)

MELODY <sup>117</sup>

BACKTRACK

The image shows a musical score for two parts: MELODY and BACKTRACK. MELODY is written on a treble clef staff and consists of a sequence of notes and rests. BACKTRACK is written on a bass clef staff and consists of chords and rests. The MELODY part starts with a treble clef and a key signature of one sharp (F#). The BACKTRACK part starts with a bass clef and a key signature of one sharp (F#). The MELODY part is labeled 'MELODY' and the BACKTRACK part is labeled 'BACKTRACK'. The MELODY part is numbered '117' at the beginning. The MELODY part has a total of 14 measures. The BACKTRACK part has a total of 14 measures. The MELODY part has a total of 14 notes. The BACKTRACK part has a total of 14 chords.

Good Charlotte - Keep your hands off my girl

MELODY

♩ = 138,000198

6

11

14

17

20

23

26

29

33

36

V.S.





71

74

77

79

81

83

85

87

89

91

94

98

101

105

108

111

113

115

117

BACKTRACK

Good Charlotte - Keep your hands off my girl

♩ = 138,000198

2 29

34 5

41

44 17

63 5

70 16

88

91 5

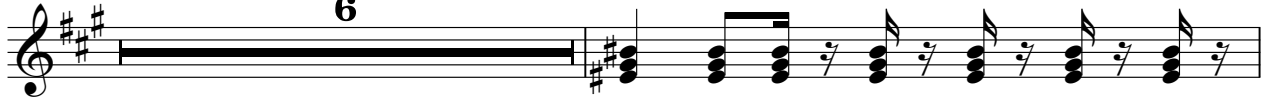
99 5

BACKTRACK

106



109



116



\*Dean Buttorworth (Drum)

# Good Charlotte - Keep your hands off my girl

♩ = 138,000198

**6**

11

15

19

23

27

31

35

39

43

V.S.

## \*Dean Buttorworth (Drum)

Drum notation for Dean Buttorworth, measures 47-83. The notation is presented in ten systems, each starting with a measure number (47, 51, 55, 59, 63, 67, 71, 75, 79, 83) on the left. Each system consists of two staves: a top staff for the snare drum and a bottom staff for the bass drum. The snare drum part is indicated by 'x' marks on the top staff, and the bass drum part is indicated by notes on the bottom staff. The notation shows a complex rhythmic pattern, likely in 4/4 time, with various note values and rests. The notation is written in a standard musical notation style, with a key signature of one flat (Bb) and a common time signature (C).

87

91

95

99

103

107

111

114

# Good Charlotte - Keep your hands off my girl

\*Billy Martin (Guitar 2)

♩ = 138,000198

**54**

E																			
B																			
A																			
D																			
G																			
E																			
A																			

58

T																			
A																			
B																			

62

T																			
A																			
B																			

65

T																			
A																			
B																			

69

T																			
A																			
B																			

73

T																			
A																			
B																			

77

T																			
A																			
B																			

81

T																			
A																			
B																			

85

T																			
A																			
B																			

87

T																			
A																			
B																			

**4**



2 93

\*Billy Martin (Guitar 2)

T			
A	2 2 2 2 2 2 2 2	4 4 4 4 4 4 4 4	2 2 2 2 2
B	0 0 0 0 0 0 0 0	2 2 2 2 2 2 2 2	4 4 4

96

T			
A	2 2 2 2 2	2 2 2 2 2 2 2 2	4 4 4 4 4 4 4 4
B	4 4 4	0 0 0 0 0 0 0 0	2 2 2 2 2 2 2 2

99

T			
A	2 2 2 2 2	2 2 2 2 2	2 2 2 2 2 2 2 2
B	4 4 4	4 4 4	0 0 0 0 0 0 0 0

103

T			
A	2 2 2 2 2	2 2 2 2 2	2 2 2 2 2 2 2 2
B	4 4 4	4 4 4	0 0 0 0 0 0 0 0

106

10

T			
A	4 4 4 4 4 4 4 4	6 6 1	6 6 6 6 6 6 6 6
B	2 2 2 2 2 2 2 2	6 6 6	6 6 6 6 6 6 6 6

# Good Charlotte - Keep your hands off my girl

## \*Benji Maiden (Guitar)

♩ = 138,000198

**22**

E																			
B																			
G																			
D																			
A																			
E																			
A																			

26

T																			
A																			
B																			

30

T																			
A																			
B																			

33

T																			
A																			
B																			

36

T																			
A																			
B																			

40

T																			
A																			
B																			

42

**8**

T																			
A																			
B																			

\*Benji Maiden (Guitar)

T																				
A		2		1						2		1								
B	4		4		4	4		4	4	4	2	2		4		4		4	4	2

56

T																							
A	2	2	2	2	2	2	2	2	2	4	4	4	4	4	4	4	4	4	2	2	2	2	2
B	0	0	0	0	0	0	0	0	0	2	2	2	2	2	2	2	2	2	4	4	4		

59

T																							
A				2	2	2	2	2	2	2	2	2	2	2	2	4	4	4	4	4	4	4	4
B	4	4	4							0	0	0	0	0	0	2	2	2	2	2	2	2	2

62

T																							
A				2	2	2	2	2	2	2	2	2	2	2	2	2	2	2	2	2	2	2	2
B	4	4	4							4	4	4				0	0	0	0	0	0	0	0

65

T																							
A				4	4	4	4	4	4	4	4	4	4	4	2	2	2	2	2	2	2	2	2
B	4	4	4	4	4	4	4	4	4	4	4	4	4	4	4	4	4	4	4	4	4	4	4

68

T																							
A	2	2	2	2	2	2	2	2	2	4	4	4	4	4	4	4	4	4	6	6	6	6	6
B	0	0	0	0	0	0	0	0	0	2	2	2	2	2	2	2	2	2	6	6	6	6	6

72

T										0	0	0	0	0	0	0	0	3	3	3	3	3	3
A			4		4	6	1	3	3	1	1	6	1	1	1	6	1	2	1	1	1	1	1
B	6	6	2	6	6	2	4	4	4	4	4	4	4	4	4	4	4	4	4	4	4	4	4

76

T										0	0	0	0	0	0	0	0	2	2	2	2	2	2
A			4		4	6	1	3	3	1	1	6	1	1	1	6	1	2	2	2	2	2	2
B	6	6	2	6	6	2	4	4	4	4	4	4	4	4	4	4	4	4	4	4	4	4	4

80

T										0	0	0	0	0	0	0	0	3	3	3	3	3	3
A			4		4	6	1	3	3	1	1	6	1	1	1	6	1	2	1	1	1	1	1
B	6	6	2	6	6	2	4	4	4	4	4	4	4	4	4	4	4	4	4	4	4	4	4

84

T										0	0	0	0	0	0	0	0	2	2	2	2	2	2
A			4		4	6	1	3	3	1	1	6	1	1	1	6	1	2	2	2	2	2	2
B	6	6	2	6	6	2	4	4	4	4	4	4	4	4	4	4	4	4	4	4	4	4	4

**4**

	2 2 2	2 2 2	2 2 2	2 2 2				
T								
A	3 3 3	3 3 3	3 3 3	3 3 3				
B	4 4 4	4 4 4	4 4 4	4 4 4		2 2 2	2 2 2	2 2 2
						2 2 2	2 2 2	2 2 2
						0 0 0	0 0 0	0 0 0
						4 4 4	4 4 4	4 4 4
						4 4 4	4 4 4	4 4 4
						2 2 2	2 2 2	2 2 2

95

T								
A		2 2 2	2 2 2		2 2 2	2 2 2	2 2 2	2 2 2
B	4 4 4			4 4 4		0 0 0	0 0 0	0 0 0
						4 4 4	4 4 4	4 4 4
						4 4 4	4 4 4	4 4 4
						2 2 2	2 2 2	2 2 2

99

T								
A		2 2	2 2	2 2	2 2	2 2	2 2	2 2
B	4 4 4			4 4 4		0 0 0	0 0 0	0 0 0
						2 2 2	2 2 2	2 2 2
						2 2 2	2 2 2	2 2 2
						0 0 0	0 0 0	0 0 0

102

T								
A	4 4	4 4	4 4	4 4	4 4	2 2	2 2	2 2
B	4 4	4 4	4 4	4 4	4 4	4 4 4		4 4 4
	2 2	2 2	2 2	2 2	2 2			

105

T								
A	2	2	2	2	2	2	2	2
B	0	0	0	0	0	0	0	0

107

**10**

T								
A						1		
B	6 6 6	6 6 6	6 6 6	6 6 6	6 6 6	6 6 6	6 6 6	6 6 6
	6 6 6	6 6 6	6 6 6	6 6 6	6 6 6	6 6 6	6 6 6	6 6 6
	6 6 6	6 6 6	6 6 6	6 6 6	6 6 6	6 6 6	6 6 6	6 6 6

# Good Charlotte - Keep your hands off my girl

\*Paul Thomas (Bass Effect)

♩ = 138,000198

**2**

E  
B  
T  
A  
B  
A

? ? ? ? ? ? ? ? ? ? 5 5 5 ? ? ? ? ? ?

7

T  
A  
B

? ? ? ? 5 5 5 ? ? ? ? ? ? ? ? ? ? 5 5 5 ? ? ? ? ? ?

11

T  
A  
B

? ? ? ? 5 5 5 ? ? ? ? ? ? ? ? ? ? 5 5 5 ? ? ? ? ? ?

15

T  
A  
B

? ? ? ? 5 5 5 ? ? ? ? ? ? ? ? ? ? 5 5 5 ? ? ? ? ? ?

19

T  
A  
B

? ? ? ? 5 5 5 ? ? ? ? ? ? ? ? ? ? 5 5 5 ? ? ? ? ? ?

23

T  
A  
B

? ? ? ? 5 5 5 ? 0 ? 6 ? 4 ? ? ? ? 2 ? ? 0 ? 6 ? 4

27

T  
A  
B

? ? ? 2 ? ? ? ? ? ? ? ? ? ? ? ? ? ? ? ? ? ? ?

30

T  
A  
B

? ? ? 0 0 0 0 0 ? ? ? 0 0 0 0 0 ? ? ? ? ? ? ? ? ? ?

33

T  
A  
B

? ? ? ? ? ? ? ? ? ? 0 0 0 0 0 ? ? ? 0 0 0 0 0

36

T  
A  
B

? 0 0 0 0 0

V.S.

\*Paul Thomas (Bass Effect)

T  
A  
B

? ? ? 0 0 0 0 0 | ? ? ? ? ? ? ? ? ? | ? ? ? ? ? ? ? ? ?

42

T  
A  
B

? ? ? ? ? ? ? ? | ? ? ? ? ? ? ? ? ? | ? ? ? ? ? ? ? ?

45

T  
A  
B

? ? ? ? 5 5 5 | ? ? ? ? ? ? ? ? ? 5 5 5 | ? ? ? ? ? ?

49

T  
A  
B

? ? ? ? 5 5 5 | ? ? ? ? ? ? ? ? ? 5 5 5 | ? 0 ? 6 ? 4

53

T  
A  
B

? ? ? 2 ? ? 0 ? 6 ? 4 | ? ? ? ? 2 | ? ? ? ? ? ? ? ? ?

57

T  
A  
B

? ? ? ? ? ? ? ? | ? ? ? 0 0 0 0 0 | ? ? ? 0 0 0 0 0

60

T  
A  
B

? ? ? ? ? ? ? ? | ? ? ? ? ? ? ? ? ? | ? ? ? 0 0 0 0 0

63

T  
A  
B

? ? ? 0 0 0 0 0 | ? ? ? ? ? ? ? ? ? | ? ? ? ? ? ? ? ? ?

66

T  
A  
B

? ? ? 0 0 0 0 0 | ? ? ? 0 0 0 0 0 | ? ? ? ? ? ? ? ? ?

69

T  
A  
B

? ? ? ? ? ? ? ? | ? ? ? ? ? ? ? ? ? | ? ? ? ? ? ? ? ? ?

72

T  
A  
B

? ? 2 ? ? 2 4 6 | 6 6 4 6 6 6 4 6 | ? ? ? ? ? ? ? ?

75

T  
A  
B

? ? ? ? ? ? ? ? | ? ? 2 ? ? 2 4 6 | 6 6 4 6 6 6 4 6 | ? ? ? ? ? ? ? ?

79

T  
A  
B

? ? ? ? ? ? ? ? | ? ? 2 ? ? 2 4 6 | 6 6 4 6 6 6 6 4 6

82

T  
A  
B

? ? ? ? ? ? ? ? | ? ? ? ? ? ? ? ? | ? ? 2 ? ? 2 4 6

85


T  
A  
B

6 6 4 6 6 6 4 6 | ? ? ? ? ? ? ? ? | ? ? ? ? ? ? ? ?

88

**4**

T  
A  
B

? ? ? ? ? ? ? ? |  | ? ? ? ? ? ? ? ? | ? ? ? ? ? ? ? ?

95

T  
A  
B

? ? ? 0 0 0 0 0 | ? ? ? 0 0 0 0 0 | ? ? ? ? ? ? ? ?

98

T  
A  
B

? ? ? ? ? ? ? ? | ? ? ? 0 0 0 0 0 | ? ? ? 0 0 0 0 0

101

T  
A  
B

? ? ? ? ? ? ? ? | ? ? ? ? ? ? ? ? | ? ? ? 0 0 0 0 0

104

T  
A  
B

? ? ? 0 0 0 0 0 | ? ? ? ? ? ? ? ? | ? ? ? ? ? ? ? ?

V.S.

4 107

\*Paul Thomas (Bass Effect)

A guitar TAB for measure 107. The staff is divided into four measures. The first three measures each contain seven question marks. The fourth measure contains four question marks followed by three '5's. The letters 'T', 'A', and 'B' are stacked vertically on the left side of the staff.

111

A guitar TAB for measure 111. The staff is divided into two measures. The first measure contains three question marks, and the second measure contains three question marks followed by three '5's. The letters 'T', 'A', and 'B' are stacked vertically on the left side of the staff.

113

A guitar TAB for measure 113. The staff is divided into three measures. The first measure contains five question marks, the second contains four question marks, and the third contains three '5's. A thick black bar is drawn across the staff in the third measure, with a '4' written above it. The letters 'T', 'A', and 'B' are stacked vertically on the left side of the staff.



# Good Charlotte - Keep your hands off my girl

\*Paul Thomas (Bass)

♩ = 138,000198

2



7



11



15



19



23



27



30



33



36



V.S.

39



42



45



49



53



57



60



63



66



69



72



75



78



81



84



87



94



97



100



103



V.S.

106



109



112



♩ = 138,000198

30

34

40

60

64

68

97

105

17

26

4

11

\*Billy Martin (Keyboard)

Good Charlotte - Keep your hands off my girl

♩ = 138,000198

4

12

21

8 2

35

2 4

44

47

50

53

7 2 2

66

24 2

95

2 2

2

\*Billy Martin (Keyboard)

103

4

Musical notation for measures 103 and 104. Measure 103 consists of two measures of music in G major, each containing a dotted quarter note and an eighth note. Measure 104 is a whole rest, with the number 4 written above it.

110

Musical notation for measures 110, 111, and 112. Each measure contains a sequence of eighth notes and rests, with a key signature change to D major at the start of measure 111.

113

4

Musical notation for measures 113 and 114. Measure 113 contains eighth notes and rests. Measure 114 is a whole rest, with the number 4 written above it.

♩ = 138,000198

4

9

16

22

31

40

47

53

62

69

5 3



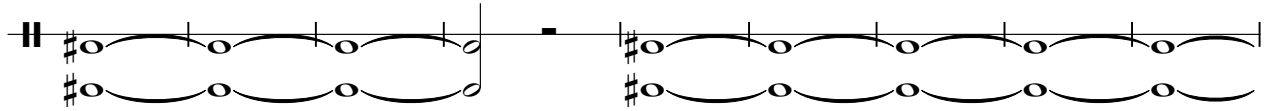
2

\*Billy Martin (Keyboard 2)

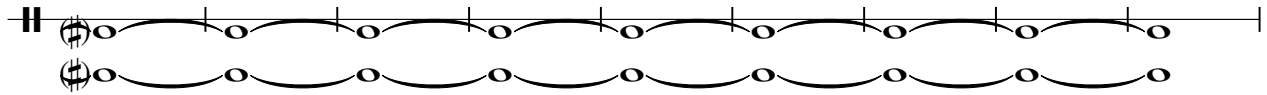
80



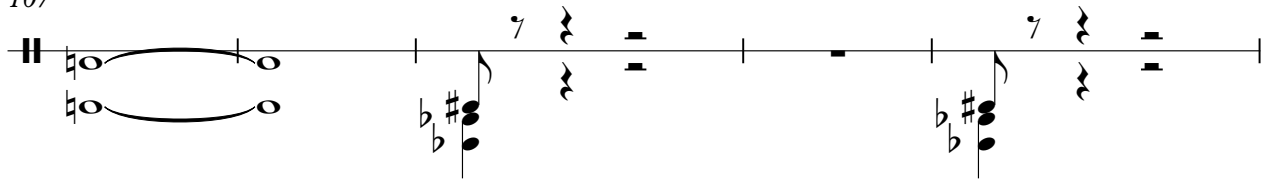
89



98



107



112

