

Good Charlotte - Secrets

♩ = 170,000092

Joel

drum

Acoustic Guitar

Overdrive

Distortion

Guitar Harmonics

Bass

2

drum

Acoustic Guitar

Distortion

Bass

3

drum

Acoustic Guitar

Distortion

Bass

3

4

2 4
2 4
0 2

4

drum

Acoustic Guitar

Distortion

Bass

4

0 4 2

5

drum

Acoustic Guitar

Overdrive

Distortion

Bass

5

0 3
4 4
2 1

6

drum

Acoustic Guitar

Overdrive

Distortion

T		
A	1	4
B	4	2

Bass

7

drum

Acoustic Guitar

Overdrive

Distortion

T		
A	2	4
B	2	4
	0	2

Bass

8

drum

Acoustic Guitar

Overdrive

Distortion

Bass

9

drum

Acoustic Guitar

Overdrive

Distortion

Bass

10

drum

Acoustic Guitar

Overdrive

Distortion

T		
A	1	4
B	4	2

Bass

11

drum

Acoustic Guitar

Overdrive

Distortion

T		
A	2	4
B	2	4
	0	2

Bass

12

drum

Acoustic Guitar

Overdrive

Distortion

Bass

13

Joel

drum

Overdrive

15

Joel

drum

Overdrive

17

Joel

drum

Overdrive

19

Joel

drum

Overdrive

20

Joel

drum

Overdrive

21

Joel

drum

Overdrive

Distortion

T															
A	2	2	2	2	2	2	2	2	2	2	2	2	2	2	2
B	0	0	0	0	0	0	0	0	0	0	0	0	0	0	0

23

Joel

drum

Overdrive

Distortion

T															
A	6	6	6	6	6	6	6	6	6	6	6	6	6	6	6
B	4	4	4	4	4	4	4	4	4	4	4	4	4	4	4

25

Joel

drum

Overdrive

Distortion

T														
A														
B	2	2	2	2	2	2	2	2	2	2	2	2	2	2

27

Joel

drum

Overdrive

Distortion

T														
A														
B	4	4	4	4	4	4	4	4	4	4	4	4	4	4
B	2	2	2	2	2	2	2	2	2	2	2	2	2	2

29

Joel

drum

Acoustic Guitar

Overdrive

Distortion

Bass

T	0													3
A	4													4
B	2													1

30

Joel

drum

Acoustic Guitar

Overdrive

Distortion

T		
A	1	4
B	4	2

Bass

31

Joel

drum

Acoustic Guitar

Overdrive

Distortion

T		
A	2	4
B	2	4
	0	2

Bass

32

Joel

drum

Acoustic Guitar

Overdrive

Distortion

Bass

33

Joel

drum

Acoustic Guitar

Overdrive

Distortion

Bass

34

Joel

drum

Acoustic Guitar

Overdrive

Distortion

T		
A	1	4
B	4	2

Bass

35

Joel

drum

Acoustic Guitar

Overdrive

Distortion

T		
A	2	4
B	2	4
	0	2

Bass

36

Joel

drum

Acoustic Guitar

Overdrive

Distortion

Guitar Harmonics

Bass

38

Joel

drum

Overdrive

Distortion

Bass

41

Joel

drum

Overdrive

Distortion

Guitar Harmonics

Bass

44

Joel

drum

Overdrive

Distortion

Guitar Harmonics

Bass

47

Joel

drum

Overdrive

Distortion

Guitar Harmonics

Bass

50

Joel

drum

Overdrive

Distortion

Bass

53

Joel

drum

Acoustic Guitar

Overdrive

Distortion

Bass

54

drum

Acoustic Guitar

Overdrive

Distortion

Bass

55

drum

Acoustic Guitar

Overdrive

Distortion

Bass

Tablature for Distortion:

T					
A	2			4	
B	2			4	
	0			2	

Detailed description: This system covers measures 55 and 56. Measure 55 features a drum pattern with a snare on the 2nd and 4th beats and a hi-hat on the 1st and 3rd. The Acoustic Guitar plays a complex, rhythmic pattern with many beamed notes. The Overdrive part has a simple melody. The Distortion part shows a guitar tab with fret numbers 2, 4, 2, 4, 2. The Bass part has a single note on the 2nd fret of the 4th string.

56

drum

Acoustic Guitar

Overdrive

Distortion

Bass

Tablature for Distortion:

T	0				
A	4				
B	2				

Detailed description: This system covers measures 57 and 58. Measure 57 has a drum pattern with a snare on the 2nd and 4th beats. The Acoustic Guitar continues with a complex pattern. The Overdrive part has a single note. The Distortion part shows a guitar tab with fret numbers 0, 4, 2. The Bass part has a single note on the 4th string.

57

Joel

drum

Overdrive

Detailed description: This system covers measures 59 and 60. Measure 59 features a vocal line for 'Joel' with a melodic phrase. The drum pattern continues with a snare on the 2nd and 4th beats. The Overdrive part has a fast, rhythmic pattern of beamed notes.

59

Joel

drum

Overdrive

61

Joel

drum

Overdrive

63

Joel

drum

Overdrive

64

Joel

drum

Overdrive

65

Joel

drum

Overdrive

Distortion

T														
A														
B	2	2	2	2	2	2	2	2	2	2	2	2	2	2
	0	0	0	0	0	0	0	0	0	0	0	0	0	0

67

Joel

drum

Overdrive

Distortion

T														
A														
B	6	6	6	6	6	6	6	6	6	6	6	6	6	6
	4	4	4	4	4	4	4	4	4	4	4	4	4	4

69

Joel

drum

Overdrive

Distortion

T														
A														
B	2	2	2	2	2	2	2	2	2	2	2	2	2	2
	0	0	0	0	0	0	0	0	0	0	0	0	0	0

71

Joel

drum

Overdrive

Distortion

T																	
A	4	4	4	4	4	4	4	4	4	4	4	4	4	4	4	4	4
B	2	2	2	2	2	2	2	2	2	2	2	2	2	2	2	2	2

73

Joel

drum

Acoustic Guitar

Overdrive

Distortion

Bass

T	0							3									
A	4							4									
B	2							1									

74

Joel

drum

Acoustic Guitar

Overdrive

Distortion

T		
A	1	4
B	4	2

Bass

75

Joel

drum

Acoustic Guitar

Overdrive

Distortion

T		
A	2	4
B	2	4
	0	2

Bass

76

Joel

drum

Acoustic Guitar

Overdrive

Distortion

Bass

77

Joel

drum

Acoustic Guitar

Overdrive

Distortion

Bass

78

Joel

drum

Acoustic Guitar

Overdrive

Distortion

Bass

T		
A	1	4
B	4	2

79

Joel

drum

Acoustic Guitar

Overdrive

Distortion

Bass

T		
A	2	4
B	2	4
	0	2

80

Joel

drum

Acoustic Guitar

Overdrive

Distortion

Guitar Harmonics

Bass

82

Joel

drum

Overdrive

Distortion

Bass

85

Joel

drum

Overdrive

Distortion

Guitar Harmonics

Bass

88

Joel

drum

Overdrive

Distortion

Guitar Harmonics

Bass

91

Joel

drum

Overdrive

Distortion

Guitar Harmonics

Bass

94

Joel

drum

Overdrive

Distortion

Bass

97

Joel

drum

Bass

100

drum

Bass

Detailed description: This system contains measures 100, 101, and 102. The drum part is on a single staff with a double bar line at the beginning. The bass part is on a staff with a treble clef and a key signature of one sharp (F#). The bass line consists of eighth and quarter notes with various accidentals (sharps and flats).

103

Joel

drum

Bass

Detailed description: This system contains measures 103, 104, and 105. The Joel part is on a staff with a treble clef and a key signature of one sharp. Measures 103 and 104 are mostly rests, with some notes in measure 105. The drum and bass parts continue from the previous system.

106

Joel

drum

Bass

Detailed description: This system contains measures 106, 107, and 108. The Joel part is on a staff with a treble clef and a key signature of one sharp. The drum and bass parts continue from the previous system.

109

Joel

drum

Bass

Detailed description: This system contains measures 109, 110, and 111. The Joel part is on a staff with a treble clef and a key signature of one sharp. The drum and bass parts continue from the previous system.

112

Joel

drum

Distortion

Bass

114

Joel

drum

Distortion

Bass

117

Joel

drum

Distortion

Bass

120

Joel

drum

Overdrive

Distortion

Bass

T
A
B

6 6 6 6 6 6 6 6 4 4
4 4 4 4 4 4 4 4 2 2
2 2

123

Joel

drum

Overdrive

Distortion

Guitar Harmonics

Bass

T
A
B

6 6 4 4 4 4 4 4
4 4 2 2 2 2 2 2
2 2

T
A
B

2 2
? ?

126

Joel

drum

Overdrive

Distortion

Bass

129

Joel

drum

Overdrive

Distortion

Guitar Harmonics

Bass

132

Joel

drum

Overdrive

Distortion

Guitar Harmonics

Bass

T
A
B

6 4

4 4 4 4 4 4

2 2 2 2 2 2

2 2

4 4 2 2

T
A
B

2 ? 2 ?

135

Joel

drum

Overdrive

137

Joel

drum

Acoustic Guitar

Overdrive

Distortion

Bass

138

drum

Acoustic Guitar

Overdrive

Distortion

Bass

139

drum

Acoustic Guitar

Overdrive

Distortion

T		
A	2	4
B	2	4
	0	2

Bass

140

drum

Acoustic Guitar

Overdrive

Distortion

T	0	
A	4	
B	2	

Bass

141

drum

Acoustic Guitar

Overdrive

Distortion

T	0	3
A	4	4
B	2	1

Bass

142

drum

Acoustic Guitar

Overdrive

Distortion

T	1	4
A	1	4
B	4	2

Bass

143

drum

Acoustic Guitar

Overdrive

Distortion

Bass

T		
A	2	4
B	2	4
	0	2

144

drum

Acoustic Guitar

Overdrive

Distortion

Bass

T	0
A	4
B	2

145

Joel

drum

Acoustic Guitar

Overdrive

Distortion

T	0	3
A	4	4
B	2	1

Bass

146

Joel

drum

Acoustic Guitar

Overdrive

Distortion

T	1	4
A	1	4
B	4	2

Bass

147

Joel

drum

Acoustic Guitar

Overdrive

Distortion

T		
A	2	4
B	2	4
	0	2

Bass

148

Joel

drum

Acoustic Guitar

Overdrive

Distortion

T	0	
A	4	
B	2	

Bass

149

Joel

drum

Acoustic Guitar

Overdrive

Distortion

T	0	3
A	4	4
B	2	1

Bass

150

Joel

drum

Acoustic Guitar

Overdrive

Distortion

T	1	4
A	1	4
B	4	2

Bass

151

Joel

drum

Acoustic Guitar

Overdrive

Distortion

Bass

The musical score for measures 151 and 152 features the following components:

- Joel:** A vocal line in treble clef with a key signature of one sharp (F#) and a common time signature. It begins with a whole note chord.
- drum:** A drum line in a 2/4 time signature, featuring a consistent pattern of snare and bass drum hits.
- Acoustic Guitar:** A complex guitar line in treble clef with a key signature of one sharp, consisting of dense chordal textures and melodic fragments.
- Overdrive:** A guitar line in treble clef with a key signature of one sharp, featuring a simple melodic line.
- Distortion:** A guitar line in treble clef with a key signature of one sharp, featuring a simple melodic line.
- Bass:** A bass line in bass clef with a key signature of one sharp, featuring a simple melodic line.

152

drum

Acoustic Guitar

Overdrive

Distortion

Bass

The musical score for measures 152 and 153 features the following components:

- drum:** A drum line in a 2/4 time signature, featuring a consistent pattern of snare and bass drum hits.
- Acoustic Guitar:** A complex guitar line in treble clef with a key signature of one sharp, consisting of dense chordal textures and melodic fragments.
- Overdrive:** A guitar line in treble clef with a key signature of one sharp, featuring a simple melodic line.
- Distortion:** A guitar line in treble clef with a key signature of one sharp, featuring a simple melodic line.
- Bass:** A bass line in bass clef with a key signature of one sharp, featuring a simple melodic line.

154

Joel

drum

Acoustic Guitar

Overdrive

Distortion

Guitar Harmonics

Bass

♩ = 170,000092

12

17

23

29

34

40

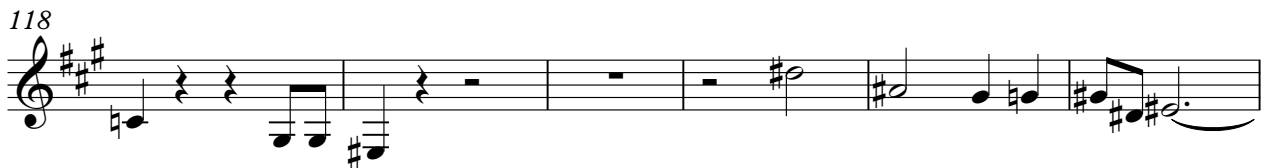
46

52

3

60

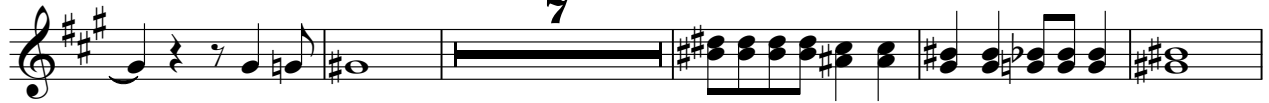
64



130



136



148



Good Charlotte - Secrets

drum

♩ = 170,000092

5

8

11

15

20

25

29

32

35

V.S.

39

44

49

53

56

61

66

71

75

78

81

Musical notation for drum part 81-85. The staff shows a sequence of notes and rests. Above the staff, there are several groups of 'x' marks, indicating specific drum hits or patterns. The notation includes quarter notes, eighth notes, and rests.

86

Musical notation for drum part 86-90. Similar to the previous system, it features notes, rests, and 'x' marks above the staff.

91

Musical notation for drum part 91-95. Continues the sequence with notes, rests, and 'x' marks.

96

Musical notation for drum part 96-100. The notation becomes more rhythmic with eighth notes and sixteenth notes.

101

Musical notation for drum part 101-105. Continues the rhythmic pattern.

106

Musical notation for drum part 106-110. Continues the rhythmic pattern.

111

Musical notation for drum part 111-115. Continues the rhythmic pattern.

116

Musical notation for drum part 116-120. Continues the rhythmic pattern.

121

Musical notation for drum part 121-125. Includes notes, rests, and 'x' marks.

126

Musical notation for drum part 126-130. Includes notes, rests, and 'x' marks.

V.S.

131

Musical notation for drum part 131, featuring a series of eighth notes with 'x' marks above them, indicating a specific drum sound, and a bass line with eighth notes.

136

Musical notation for drum part 136, featuring a series of eighth notes with 'x' marks above them, indicating a specific drum sound, and a bass line with eighth notes.

139

Musical notation for drum part 139, featuring a series of eighth notes with 'x' marks above them, indicating a specific drum sound, and a bass line with eighth notes.

142

Musical notation for drum part 142, featuring a series of eighth notes with 'x' marks above them, indicating a specific drum sound, and a bass line with eighth notes.

145

Musical notation for drum part 145, featuring a series of eighth notes with 'x' marks above them, indicating a specific drum sound, and a bass line with eighth notes.

148

Musical notation for drum part 148, featuring a series of eighth notes with 'x' marks above them, indicating a specific drum sound, and a bass line with eighth notes.

151

Musical notation for drum part 151, featuring a series of eighth notes with 'x' marks above them, indicating a specific drum sound, and a bass line with eighth notes.

153

Musical notation for drum part 153, featuring a series of eighth notes with 'x' marks above them, indicating a specific drum sound, and a bass line with eighth notes.

Good Charlotte - Secrets

Acoustic Guitar

$\text{♩} = 170,000092$

2

3

4

5

6

7

8

9

10

V.S.

11

12

29

30

31

32

33

34

35

36

53



Musical notation for measure 53, featuring a treble clef, a key signature of two sharps (F# and C#), and a complex chordal structure with various accidentals.

54



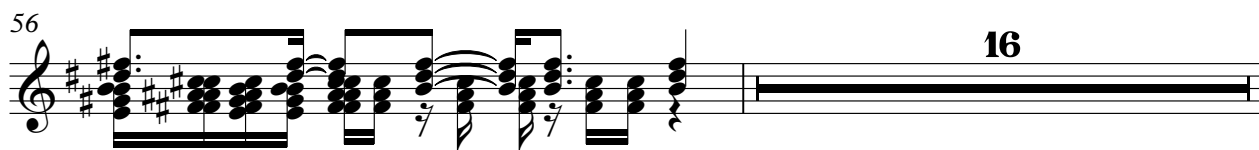
Musical notation for measure 54, continuing the complex chordal structure from the previous measure.

55



Musical notation for measure 55, featuring a treble clef, a key signature of two sharps, and a complex chordal structure.

56



Musical notation for measure 56, ending with a double bar line and the number 16, indicating a measure rest.

73



Musical notation for measure 73, featuring a treble clef, a key signature of two sharps, and a complex chordal structure.

74



Musical notation for measure 74, continuing the complex chordal structure.

75



Musical notation for measure 75, featuring a treble clef, a key signature of two sharps, and a complex chordal structure.

76



Musical notation for measure 76, featuring a treble clef, a key signature of two sharps, and a complex chordal structure.

77



Musical notation for measure 77, featuring a treble clef, a key signature of two sharps, and a complex chordal structure.

78



Musical notation for measure 78, featuring a treble clef, a key signature of two sharps, and a complex chordal structure.

79

80

137

138

139

140

141

142

143

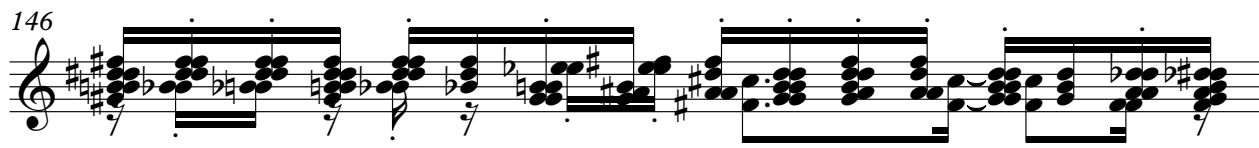
144

145



Musical notation for measure 145, featuring a treble clef, a key signature of two sharps (F# and C#), and a 7/8 time signature. The measure contains a sequence of chords and melodic lines, including a prominent F#m chord and a C#m chord, with various rhythmic patterns and accidentals.

146



Musical notation for measure 146, continuing the sequence of chords and melodic lines from the previous measure, maintaining the 7/8 time signature and key signature.

147



Musical notation for measure 147, featuring a treble clef, a key signature of two sharps (F# and C#), and a 7/8 time signature. The measure contains a sequence of chords and melodic lines, including a prominent F#m chord and a C#m chord, with various rhythmic patterns and accidentals.

148



Musical notation for measure 148, featuring a treble clef, a key signature of two sharps (F# and C#), and a 7/8 time signature. The measure contains a sequence of chords and melodic lines, including a prominent F#m chord and a C#m chord, with various rhythmic patterns and accidentals.

149



Musical notation for measure 149, featuring a treble clef, a key signature of two sharps (F# and C#), and a 7/8 time signature. The measure contains a sequence of chords and melodic lines, including a prominent F#m chord and a C#m chord, with various rhythmic patterns and accidentals.

150



Musical notation for measure 150, featuring a treble clef, a key signature of two sharps (F# and C#), and a 7/8 time signature. The measure contains a sequence of chords and melodic lines, including a prominent F#m chord and a C#m chord, with various rhythmic patterns and accidentals.

151



Musical notation for measure 151, featuring a treble clef, a key signature of two sharps (F# and C#), and a 7/8 time signature. The measure contains a sequence of chords and melodic lines, including a prominent F#m chord and a C#m chord, with various rhythmic patterns and accidentals.

152



Musical notation for measure 152, featuring a treble clef, a key signature of two sharps (F# and C#), and a 7/8 time signature. The measure contains a sequence of chords and melodic lines, including a prominent F#m chord and a C#m chord, with various rhythmic patterns and accidentals. A large number '4' is positioned above the staff towards the end of the measure.

Good Charlotte - Secrets

Overdrive

♩ = 170,000092

4

9

13

15

17

19

21

23

25

27

V.S.

30

34

39

43

47

51

55

58

60

62

64



66



68



70



72



75



79



84



88



92



V.S.

96 **24**

123

127

131

135

139

143

147

151

154

Good Charlotte - Secrets

Distortion

♩ = 170,000092

E	0				0	0						
T												
A	4	4	1	4	2	4	4	4	1	4	2	4
B	2	1		4	2	4	2	4	1	4	2	4
E			4	2	0	2			4	2	0	2
A												

8

8

T	0	0						0				
A	4		3	1	4	2	4	4				
B	2	2	1	4	2	4	2	2				
				4	2	0	2					

21

T															
A															
B	2	2	2	2	2	2	2	2	2	2	2	2	2	2	2
E	0	0	0	0	0	0	0	0	0	0	0	0	0	0	0

23

T															
A															
B	6	6	6	6	6	6	6	6	6	6	6	6	6	6	6
E	4	4	4	4	4	4	4	4	4	4	4	4	4	4	4

25

T															
A															
B	2	2	2	2	2	2	2	2	2	2	2	2	2	2	2
E	0	0	0	0	0	0	0	0	0	0	0	0	0	0	0

27

T												0	3	1	
A												4	4	1	4
B	4	4	4	4	4	4	4	4	4	4	4	2	1	4	4
E	2	2	2	2	2	2	2	2	2	2	2			4	2

31

T			0	0	3	1		0							
A		4	4	4	4	1	4	4	4	4	4	4	4	2	2
B		2	4	2	2	4	4	2	4	2	2	2	2	2	2
E		0	2		1	4	2	0	2					2	2

38

T															
A				6	6	4	4					6		6	
B	4	4	2	4	4	2	2			4	4	2	2	4	4
E	2	2	2			2	2	2	2	2	2	2	2		

45

T															
A		4	4			6	6	4	4					4	4
B		2	2			4	4	2	2					2	2
E				2	2	2	2	2	2	2	2	2	2	2	2

51

8

T			0	3	1		0								
A		6	4	4	1	4	2	4	4	4					
B		4	2	1	4	4	2	4	2	2					
E					4	2	0	2							

T															
A															
B	2	2	2	2	2	2	2	2	2	2	2	2	2	2	2
	0	0	0	0	0	0	0	0	0	0	0	0	0	0	0

67

T															
A															
B	6	6	6	6	6	6	6	6	6	6	6	6	6	6	6
	4	4	4	4	4	4	4	4	4	4	4	4	4	4	4

69

T															
A															
B	2	2	2	2	2	2	2	2	2	2	2	2	2	2	2
	0	0	0	0	0	0	0	0	0	0	0	0	0	0	0

71

T										0	3	1			
A										4	4	1	4		
B	4	4	4	4	4	4	4	4	4	2	1	4	4		
	2	2	2	2	2	2	2	2	2	2	2	4	2		

75

T			0	0						0					
A	2	4	4	4	3	1	4	2	4	4	4	4	4		
B	2	4	2	2	4	4	4	2	4	2	2	2	2	2	2
	0	2			1	4	2	0	2					2	2

82

T															
A				6	6	4	4						6	6	
B	4	4	2	4	4	2	2	2	2	4	4	2	4	4	
	2	2	2					2	2	2	2	2			

89

T															
A	4	4			4	4	6	6	4	4			4	4	2
B	2	2			2	2	4	4	2	2	2	2	2	2	2
			2	2							2	2			

95

16

T												3	3	3	3	0	0	0	0
A	6	6							4	4	4	4	4	4	4	1	1	1	1
B	4	4							2	2	2	2	2	2	2	2	2	2	2

115

T																3	3	3	3	0	0	0	0
A	6	6	6	6	6	6	6	6	6	6	6	4	4	4	4	4	4	4	4	1	1	1	1
B	4	4	4	4	4	4	4	4	4	4	4	2	2	2	2	2	2	2	2	2	2	2	2

119

T																							
A	6	6	6	6	6	6	6	6	6	6	6	4	4							6	6		
B	4	4	4	4	4	4	4	4	4	4	4	2	2							4	4		
																2	2						

T													
A	4	4	4	4	4	4	6	6	4	4	4	4	4
B	2	2	2	2	2	2	4	4	2	2	2	2	2
			2	2							2	2	

131

									2			
T											0	3
A	6		6	4	4	4	4	4	4	4	4	4
B	4		4	2	2	2	2	2	2	2	2	1

138

T	1			0	0	3	1				0
A	1	4	2	4	4	4	1	4	2	4	4
B	4	4	2	4	2	2	4	4	2	4	2
		2	0	2		1		2	0	2	

145

T	0				0	0					
A	4	3	1	4	4	4	4	3	1	4	
B	2	4	1	4	2	4	4	4	1	4	
		1		4	2	4	2	1		4	
			4	2	0	2			4	2	

151

T			0								
A	2	4	4	4							
B	2	4	2	2	4	4	4	4			
	0	2			2	4	4	4			

Good Charlotte - Secrets

Guitar Harmonics

♩ = 170,000092

36 **3** **3**

E
B
G
D
A
E
A

2 2
? ?

2 2
? ?

45

3 **31**

T
A
B

2 2
? ?

2 2
? ?

2 2
? ?

82

3 **3** **3**

T
A
B

2 2
? ?

2 2
? ?

2 2
? ?

94

31 **3**

T
A
B

2 2
? ?

2 2
? ?

130

3 **23**

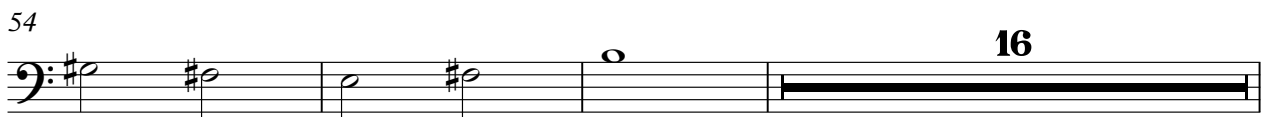
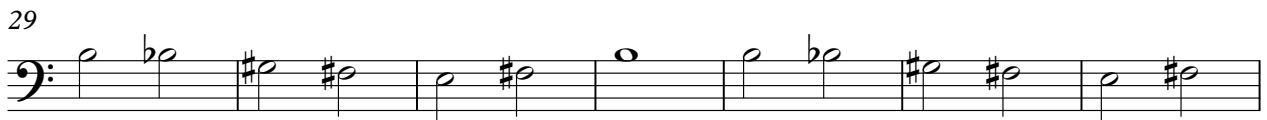
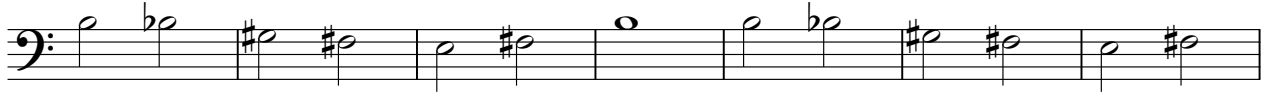
T
A
B

2 2
? ?

Good Charlotte - Secrets

Bass

♩ = 170,000092



73



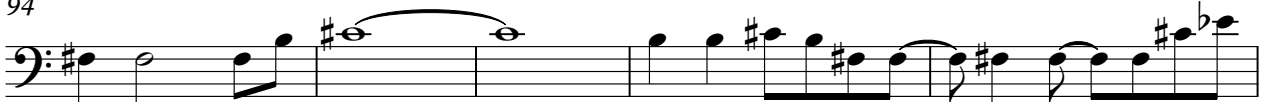
80



87



94



99



103



107



111



115



119



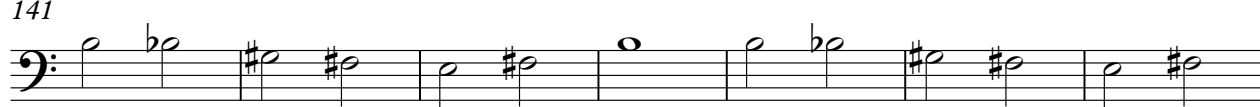
125



133



141



148



153

