

in_Alexander_Porfirevich-Polovtsian_Dance_-_Stranger_in_Pa

$\text{♩} = 140,000137$

Kora

FX 5 (Brightness)

This system shows the first four measures of the piece. The Kora part consists of chords in a 4/4 time signature, with a key signature of one flat. The FX 5 (Brightness) part features a melodic line with eighth and quarter notes, including some slurs and a dotted quarter note.

5

Kora

FX 5

This system covers measures 5 through 8. The Kora part continues with chordal accompaniment. The FX 5 part has a more active melodic line with eighth notes and a final half-note chord.

10

Kora

FX 5

This system covers measures 10 through 13. The Kora part uses a variety of chord voicings. The FX 5 part continues its melodic development with eighth notes and a half-note ending.

15

Kora

FX 5

This system covers measures 15 through 18. The Kora part introduces some lower voicings. The FX 5 part features a melodic line with a sharp sign and a half-note ending.

21

Kora

FX 5

This system covers measures 21 through 24. The Kora part continues with chordal accompaniment. The FX 5 part concludes with a melodic line that includes a sharp sign and a half-note ending.

26

Kora

FX 5

This system contains measures 26 to 31. The Kora part is written in a treble clef with a key signature of one flat. It features a series of chords: a triad in measure 26, a dyad in measure 27, a dyad in measure 28, a triad in measure 29, a triad in measure 30, and a dyad in measure 31. The FX 5 part is written in a treble clef with a key signature of one flat, featuring a melodic line with eighth and quarter notes, including a slur over measures 28-30.

32

Kora

FX 5

This system contains measures 32 to 36. The Kora part is written in a treble clef with a key signature of one flat. It features a series of chords: a dyad in measure 32, a dyad in measure 33, a triad in measure 34, a dyad in measure 35, and a triad in measure 36. The FX 5 part is written in a treble clef with a key signature of one flat, featuring a melodic line with eighth and quarter notes, including a slur over measures 33-35.

37

Kora

FX 5

This system contains measures 37 to 40. The Kora part is written in a treble clef with a key signature of one flat. It features a series of chords: a dyad in measure 37, a dyad in measure 38, a triad in measure 39, and a dyad in measure 40. The FX 5 part is written in a treble clef with a key signature of one flat, featuring a melodic line with eighth and quarter notes, including a slur over measures 38-40.

41

Kora

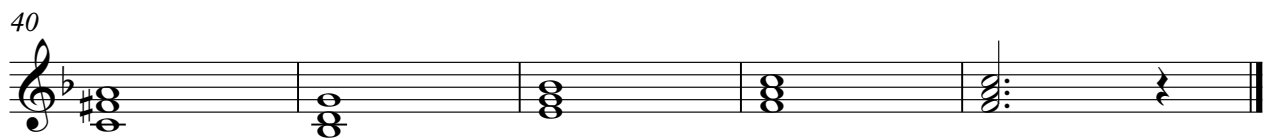
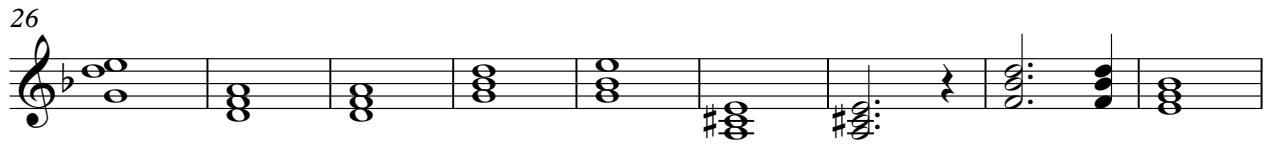
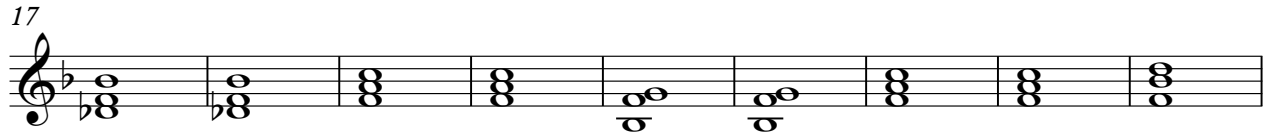
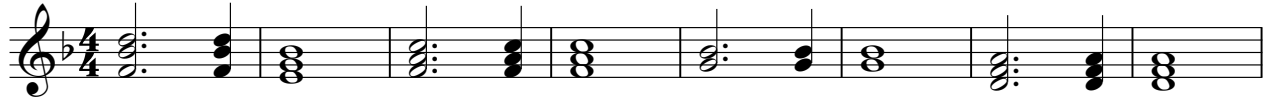
FX 5

This system contains measures 41 to 44. The Kora part is written in a treble clef with a key signature of one flat. It features a series of chords: a triad in measure 41, a triad in measure 42, a triad in measure 43, and a dyad in measure 44. The FX 5 part is written in a treble clef with a key signature of one flat, featuring a melodic line with eighth and quarter notes, including a slur over measures 42-44.

in_Alexander_Porfirevich-Polovtsian_Dance_-_Stranger_in_Pa

Kora

♩ = 140,000137



in_Alexander_Porfirevich-Polovtsian_Dance_-_Stranger_in_Pa

FX 5 (Brightness)

♩ = 140,000137



6



12



18



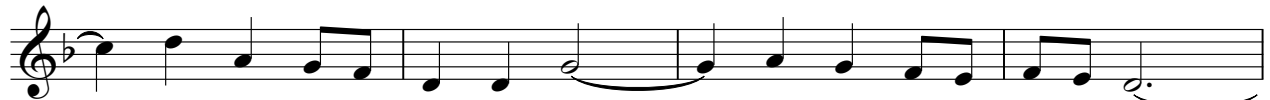
24



30



36



40

