

# control track

♩ = 92,000130

Solo

Solo

Solo

Solo

Solo

Solo

4

Solo

Solo

Solo

Solo

Solo

7

Solo

10

Solo

13

Solo

Musical notation for measures 13-15, consisting of four staves. The first two staves are labeled 'Solo' and contain melodic lines with various note values and rests. The third and fourth staves contain accompaniment with eighth and sixteenth notes.

16

Solo

Musical notation for measures 16-17, consisting of four staves. The first two staves are labeled 'Solo' and contain melodic lines. The third and fourth staves contain accompaniment with eighth and sixteenth notes.

18

Solo

Musical notation for measures 18-20, consisting of four staves. The first two staves are labeled 'Solo' and contain melodic lines with some sixteenth-note runs. The third and fourth staves contain accompaniment with eighth and sixteenth notes.

# control track

Solo

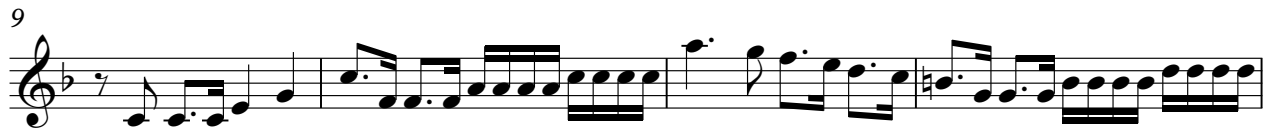
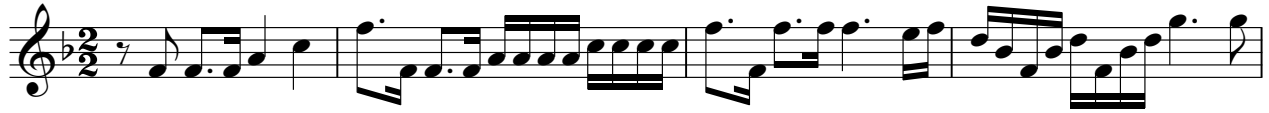
♩ = 92,000130



Solo

# control track

♩ = 92,000130



Solo

# control track

♩ = 92,000130



7



10



Solo

# control track

♩ = 92,000130

Musical notation for the first system of the solo track, starting with a 7-measure rest.

7

Musical notation for the second system of the solo track, starting at measure 7.

10

9

Musical notation for the third system of the solo track, starting at measure 10, ending with a double bar line.

# control track

Solo

♩ = 92,000130

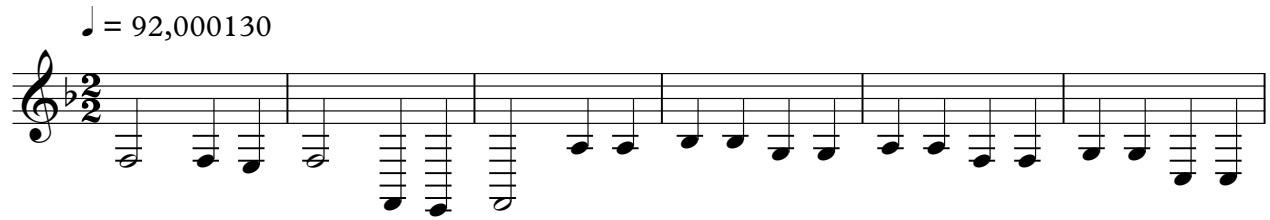




# control track

Solo

♩ = 92,000130



7



13



17

