

# Crosby Stills Nash & Young - Marrakesh Express

♩ = 120,000000

This system contains five staves: Drum, Chords, Bass, Accompaniment, and Melody. The Drum staff is in 4/4 time and shows a steady eighth-note pattern starting in the third measure, with 'x' marks above the notes. The Chords staff is in 4/4 time and shows a single chord in the third measure. The Bass staff is in 4/4 time and shows a steady eighth-note pattern starting in the third measure. The Accompaniment staff is in 4/4 time and shows a single chord in the third measure. The Melody staff is in 4/4 time and shows a single note in the third measure.

4

This system contains five staves: Drum, Chords, Bass, Accompaniment, and Melody. The Drum staff is in 4/4 time and shows a steady eighth-note pattern starting in the first measure, with 'x' marks above the notes. The Chords staff is in 4/4 time and shows a single chord in the first measure. The Bass staff is in 4/4 time and shows a steady eighth-note pattern starting in the first measure. The Accompaniment staff is in 4/4 time and shows a single chord in the first measure. The Melody staff is in 4/4 time and shows a single note in the first measure.

5

Drum

Chords

Bass

Accompaniment

Melody

6

Drum

Chords

Bass

Accompaniment

Melody

7

Drum

Chords

Bass

Accompaniment

Melody

8

Drum

Chords

Bass

Accompaniment

Melody

9

Drum

Chords

Bass

Accompaniment

Melody

10

Drum

Chords

Bass

Accompaniment

Melody

11

Drum

Chords

Bass

Accompaniment

Melody

12

Drum

Chords

Bass

Accompaniment

Melody

13

Drum

Chords

Bass

Accompaniment

Melody

14

Drum

Chords

Bass

Accompaniment

Melody

15

Drum

Chords

Bass

Accompaniment

Melody

16

Drum

Chords

Bass

Accompaniment

Melody

17

Drum

Chords

Bass

Accompaniment

Melody

18

Drum

Chords

Bass

Accompaniment

Melody



19

Drum

Chords

Bass

Accompaniment

Melody

20

Drum

Chords

Bass

Accompaniment

Melody

21

Drum

Chords

Bass

Accompaniment

Melody

22

Drum

Chords

Bass

Accompaniment

Melody

23

Drum

Chords

Bass

Accompaniment

Melody

24

Drum

Chords

Bass

Accompaniment

Melody

25

Drum

Chords

Bass

Accompaniment

Melody

26

Drum

Chords

Bass

Accompaniment

Melody

27

Drum

Chords

Bass

Accompaniment

Melody

28

Drum

Chords

Bass

Accompaniment

Melody

29

Drum

Chords

Bass

Accompaniment

Melody

30

Drum

Chords

Bass

Accompaniment

Melody

31

Drum

Chords

Bass

Accompaniment

Melody

32

Drum

Chords

Bass

Accompaniment

Melody

33

Drum

Chords

Bass

Accompaniment

Melody

34

Drum

Chords

Bass

Accompaniment

Melody



35

Drum

Chords

Bass

Accompaniment

Melody

36

Drum

Chords

Bass

Accompaniment

Melody

37

Drum

Chords

Bass

Accompaniment

Melody

38

Drum

Chords

Bass

Accompaniment

Melody

39

Drum

Chords

Bass

Accompaniment

Melody

41

Drum

Chords

Bass

Accompaniment

Melody

42

Drum

Chords

Bass

Accompaniment

Melody

43

Drum

Chords

Bass

Accompaniment

Melody

44

Drum

Chords

Bass

Accompaniment

Melody

45

Drum

Chords

Bass

Accompaniment

Melody

46

Drum

Chords

Bass

Accompaniment

Melody

47

Drum

Chords

Bass

Accompaniment

Melody

48

Drum

Chords

Bass

Accompaniment

Melody

49

Drum

Chords

Bass

Accompaniment

Melody

50

Drum

Chords

Bass

Accompaniment

Melody

51

Drum

Chords

Bass

Accompaniment

Melody



52

Drum

Chords

Bass

Accompaniment

Melody

53

Drum

Chords

Bass

Accompaniment

Melody

54

Drum

Chords

Bass

Accompaniment

Melody

55

Drum

Chords

Bass

Accompaniment

Melody

56

Drum

Chords

Bass

Accompaniment

Melody

57

Drum

Chords

Bass

Accompaniment

Melody

58

Drum

Chords

Bass

Accompaniment

Melody

59

Drum

Chords

Bass

Accompaniment

Melody

60

Drum

Chords

Bass

Accompaniment

Melody

61

Drum

Chords

Bass

Accompaniment

Melody

62

Drum

Chords

Bass

Accompaniment

Melody

63

Drum

Chords

Bass

Accompaniment

Melody

64

Drum

Chords

Bass

Accompaniment

Melody

65

Drum

Chords

Bass

Accompaniment

Melody

66

Drum

Chords

Bass

Accompaniment

Melody

67

Drum

Chords

Bass

Accompaniment

Melody



68

Drum

Chords

Bass

Accompaniment

Melody

69

Drum

Chords

Bass

Accompaniment

Melody

70

Drum

Chords

Bass

Accompaniment

Melody

71

Drum

Chords

Bass

Accompaniment

Melody

72

Drum

Chords

Bass

Accompaniment

Melody

73

Drum

Chords

Bass

Accompaniment

Melody

74

Drum

Chords

Bass

Accompaniment

Melody

75

Drum

Chords

Bass

Accompaniment

Melody

76

Drum

Chords

Bass

Accompaniment

Melody

77

Drum

Chords

Bass

Accompaniment

Melody

78

Drum

Chords

Bass

Accompaniment

Melody

79

Drum

Chords

Bass

Accompaniment

Melody

# Crosby Stills Nash & Young - Marrakesh Express

## Drum

♩ = 120,000000

2

4

6

8

10

12

14

16

18

20

V.S.

22

Musical notation for drum part 22. It consists of two staves. The top staff has a treble clef and a key signature of one flat. The bottom staff has a bass clef. The notation includes eighth notes, quarter notes, and rests, with 'x' marks above the staff indicating specific rhythmic events.

24

Musical notation for drum part 24. It consists of two staves. The top staff has a treble clef and a key signature of one flat. The bottom staff has a bass clef. The notation includes eighth notes, quarter notes, and rests, with 'x' marks above the staff indicating specific rhythmic events.

26

Musical notation for drum part 26. It consists of two staves. The top staff has a treble clef and a key signature of one flat. The bottom staff has a bass clef. The notation includes eighth notes, quarter notes, and rests, with 'x' marks above the staff indicating specific rhythmic events.

28

Musical notation for drum part 28. It consists of two staves. The top staff has a treble clef and a key signature of one flat. The bottom staff has a bass clef. The notation includes eighth notes, quarter notes, and rests, with 'x' marks above the staff indicating specific rhythmic events.

30

Musical notation for drum part 30. It consists of two staves. The top staff has a treble clef and a key signature of one flat. The bottom staff has a bass clef. The notation includes eighth notes, quarter notes, and rests, with 'x' marks above the staff indicating specific rhythmic events.

32

Musical notation for drum part 32. It consists of two staves. The top staff has a treble clef and a key signature of one flat. The bottom staff has a bass clef. The notation includes eighth notes, quarter notes, and rests, with 'x' marks above the staff indicating specific rhythmic events.

34

Musical notation for drum part 34. It consists of two staves. The top staff has a treble clef and a key signature of one flat. The bottom staff has a bass clef. The notation includes eighth notes, quarter notes, and rests, with 'x' marks above the staff indicating specific rhythmic events.

36

Musical notation for drum part 36. It consists of two staves. The top staff has a treble clef and a key signature of one flat. The bottom staff has a bass clef. The notation includes eighth notes, quarter notes, and rests, with 'x' marks above the staff indicating specific rhythmic events.

38

Musical notation for drum part 38. It consists of two staves. The top staff has a treble clef and a key signature of one flat. The bottom staff has a bass clef. The notation includes eighth notes, quarter notes, and rests, with 'x' marks above the staff indicating specific rhythmic events.

40

Musical notation for drum part 40. It consists of two staves. The top staff has a treble clef and a key signature of one flat. The bottom staff has a bass clef. The notation includes eighth notes, quarter notes, and rests, with 'x' marks above the staff indicating specific rhythmic events.



42

Musical notation for drum part 42, consisting of two staves. The top staff has a treble clef and a key signature of one flat. The bottom staff has a bass clef. The notation includes various rhythmic patterns with stems and flags, and several 'x' marks above the staff indicating specific drum hits.

44

Musical notation for drum part 44, consisting of two staves. The notation includes various rhythmic patterns with stems and flags, and several 'x' marks above the staff indicating specific drum hits.

46

Musical notation for drum part 46, consisting of two staves. The notation includes various rhythmic patterns with stems and flags, and several 'x' marks above the staff indicating specific drum hits.

48

Musical notation for drum part 48, consisting of two staves. The notation includes various rhythmic patterns with stems and flags, and several 'x' marks above the staff indicating specific drum hits.

50

Musical notation for drum part 50, consisting of two staves. The notation includes various rhythmic patterns with stems and flags, and several 'x' marks above the staff indicating specific drum hits.

52

Musical notation for drum part 52, consisting of two staves. The notation includes various rhythmic patterns with stems and flags, and several 'x' marks above the staff indicating specific drum hits.

54

Musical notation for drum part 54, consisting of two staves. The notation includes various rhythmic patterns with stems and flags, and several 'x' marks above the staff indicating specific drum hits.

56

Musical notation for drum part 56, consisting of two staves. The notation includes various rhythmic patterns with stems and flags, and several 'x' marks above the staff indicating specific drum hits.

58

Musical notation for drum part 58, consisting of two staves. The notation includes various rhythmic patterns with stems and flags, and several 'x' marks above the staff indicating specific drum hits.

60

Musical notation for drum part 60, consisting of two staves. The notation includes various rhythmic patterns with stems and flags, and several 'x' marks above the staff indicating specific drum hits.

V.S.

62

Musical notation for drum part 62. It consists of two staves. The top staff has a treble clef and a key signature of one flat (Bb). The bottom staff has a bass clef. The notation includes a series of eighth notes with stems pointing up, and 'x' marks above the staff indicating cymbal hits. The pattern repeats every four measures.

64

Musical notation for drum part 64. It consists of two staves. The top staff has a treble clef and a key signature of one flat (Bb). The bottom staff has a bass clef. The notation includes a series of eighth notes with stems pointing up, and 'x' marks above the staff indicating cymbal hits. The pattern repeats every four measures.

66

Musical notation for drum part 66. It consists of two staves. The top staff has a treble clef and a key signature of one flat (Bb). The bottom staff has a bass clef. The notation includes eighth notes with stems pointing up, 'x' marks above the staff, and some notes with stems pointing down. The pattern repeats every four measures.

68

Musical notation for drum part 68. It consists of two staves. The top staff has a treble clef and a key signature of one flat (Bb). The bottom staff has a bass clef. The notation includes eighth notes with stems pointing up, 'x' marks above the staff, and some notes with stems pointing down. The pattern repeats every four measures.

70

Musical notation for drum part 70. It consists of two staves. The top staff has a treble clef and a key signature of one flat (Bb). The bottom staff has a bass clef. The notation includes eighth notes with stems pointing up, 'x' marks above the staff, and some notes with stems pointing down. The pattern repeats every four measures.

72

Musical notation for drum part 72. It consists of two staves. The top staff has a treble clef and a key signature of one flat (Bb). The bottom staff has a bass clef. The notation includes eighth notes with stems pointing up, 'x' marks above the staff, and some notes with stems pointing down. The pattern repeats every four measures.

74

Musical notation for drum part 74. It consists of two staves. The top staff has a treble clef and a key signature of one flat (Bb). The bottom staff has a bass clef. The notation includes eighth notes with stems pointing up, 'x' marks above the staff, and some notes with stems pointing down. The pattern repeats every four measures.

76

Musical notation for drum part 76. It consists of two staves. The top staff has a treble clef and a key signature of one flat (Bb). The bottom staff has a bass clef. The notation includes eighth notes with stems pointing up, 'x' marks above the staff, and some notes with stems pointing down. The pattern repeats every four measures.

78

Musical notation for drum part 78. It consists of two staves. The top staff has a treble clef and a key signature of one flat (Bb). The bottom staff has a bass clef. The notation includes eighth notes with stems pointing up, 'x' marks above the staff, and some notes with stems pointing down. The pattern repeats every four measures.

# Crosby Stills Nash & Young - Marrakesh Express

## Chords

♩ = 120,000000

1

11

20

27

35

44

51

58

65


71

V.S.

2

# Chords

76



A musical staff in treble clef showing a sequence of chords. The staff contains eight measures of music, each with a chord symbol. The chords are: G major (first measure), A major (second measure), B major (third measure), C major (fourth measure), D major (fifth measure), E major (sixth measure), F major (seventh measure), and G major (eighth measure). The eighth measure ends with a double bar line.

# Crosby Stills Nash & Young - Marrakesh Express

Bass

♩ = 120,000000

2

8

14

20

26

31

37

43

49

55

V.S.

2

Bass

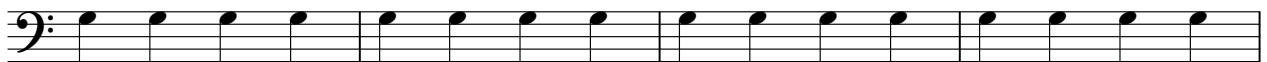
61



67



73



77



Crosby Stills Nash & Young - Marrakesh Express

Accompaniment

♩ = 120,000000

2

9

16

22

28

35

V.S.

40



47



53



58



63



66



69



72





75



78



Crosby Stills Nash & Young - Marrakesh Express

Melody

♩ = 120,000000

2

7

11

15

19

23

27

33

37

41

V.S.

