

# Gorillaz - Feel good inc

♩ = 139,499847

Drum Bass

Drum Hats

Drum Snare

Drum Claps

El. Guitar

Bass

Pad

♩ = 139,499847

Voice

4

Drum Bass  
Drum Hats  
Drum Snare  
Drum Claps  
El. Guitar  
Bass  
Voice

This section of the score covers measures 4, 5, and 6. The drum parts include a steady bass line, a consistent hi-hat pattern, and snare/clap accents. The electric guitar features a melodic line with a long sustain in measure 5. The bass line provides a rhythmic accompaniment. The voice part consists of three chords: G#m, Bbm, and G#m.



7

Drum Bass  
Drum Hats  
Drum Snare  
Drum Cymbals  
Drum Claps  
El. Guitar  
Bass  
Voice

This section of the score covers measures 7, 8, and 9. The drum parts are similar to the previous section, but include cymbal accents in measure 9. The electric guitar continues its melodic line. The bass line remains consistent. The voice part consists of three chords: G#m, Bbm, and G#m.

10

Drum Bass  
Drum Hats  
Drum Snare  
Drum Claps  
El. Guitar  
Bass  
Voice

Detailed description: This musical score block covers measures 10, 11, and 12. It features seven staves: Drum Bass, Drum Hats, Drum Snare, Drum Claps, El. Guitar, Bass, and Voice. The Drum Bass part has a consistent rhythmic pattern of eighth notes. Drum Hats play a steady eighth-note accompaniment. Drum Snare and Claps have a pattern of quarter notes with rests. The El. Guitar part is in the treble clef with a key signature of one sharp (F#) and a common time signature, featuring a melodic line with slurs and ties. The Bass part is in the bass clef with a key signature of one flat (Bb) and a common time signature, playing a rhythmic line with eighth and quarter notes. The Voice part consists of three chords: F#m (measure 10), Bb7 (measure 11), and F#m (measure 12).



13

Drum Bass  
Drum Hats  
Drum Snare  
Drum Claps  
El. Guitar  
Bass  
Voice

Detailed description: This musical score block covers measures 13, 14, and 15. It features the same seven staves as the previous block. The Drum Bass part continues with its eighth-note pattern. Drum Hats maintain their eighth-note accompaniment. Drum Snare and Claps continue with their quarter-note patterns. The El. Guitar part continues its melodic line in the treble clef with a key signature of one sharp (F#) and a common time signature. The Bass part continues its rhythmic line in the bass clef with a key signature of one flat (Bb) and a common time signature. The Voice part consists of three chords: Bb7 (measure 13), F#m (measure 14), and Bb7 (measure 15).

16

Drum Bass  
Drum Hats  
Drum Snare  
Drum Claps  
El. Guitar  
Bass  
Voice

Detailed description: This block contains the musical score for measures 16, 17, and 18. It features seven staves: Drum Bass, Drum Hats, Drum Snare, Drum Claps, El. Guitar, Bass, and Voice. The Drum Bass part has a pattern of quarter notes: a whole rest in measure 16, followed by quarter notes in measures 17 and 18. Drum Hats play a consistent eighth-note pattern. Drum Snare and Claps have patterns of quarter notes and rests. The El. Guitar part has a melodic line with slurs and ties. The Bass part has a rhythmic line with eighth and quarter notes. The Voice part consists of three chords: G#m, Bbm, and G#m.



19

Drum Bass  
Drum Hats  
Drum Snare  
Drum Claps  
El. Guitar  
Bass  
Voice

Detailed description: This block contains the musical score for measures 19, 20, and 21. It features seven staves: Drum Bass, Drum Hats, Drum Snare, Drum Claps, El. Guitar, Bass, and Voice. The Drum Bass part has a pattern of quarter notes: quarter notes in measure 19, quarter notes in measure 20, and quarter notes in measure 21. Drum Hats play a consistent eighth-note pattern. Drum Snare and Claps have patterns of quarter notes and rests. The El. Guitar part has a melodic line with slurs and ties. The Bass part has a rhythmic line with eighth and quarter notes. The Voice part consists of three chords: G#m, Bbm, and G#m.

22

Drum Bass  
Drum Hats  
Drum Snare  
Drum Claps  
El. Guitar  
Bass  
Voice

Detailed description: This system contains measures 22, 23, and 24. The Drum Bass part features a steady eighth-note pattern. Drum Hats play a consistent eighth-note accompaniment. Drum Snare and Claps provide a rhythmic backbone with quarter notes and rests. The El. Guitar part is a melodic line with various bends and slurs. The Bass part has a complex rhythmic pattern with eighth and sixteenth notes. The Voice part consists of three chords: G#m, Bbm, and G#m.



25

Drum Bass  
Drum Hats  
Drum Snare  
Drum Cymbals  
Drum Claps  
El. Guitar  
Bass  
Voice

Detailed description: This system contains measures 25, 26, and 27. The Drum Bass part continues with eighth notes. Drum Hats maintain their eighth-note pattern. Drum Snare and Claps are consistent. Drum Cymbals have two asterisked notes in measure 25. The El. Guitar part continues its melodic line. The Bass part has a similar rhythmic pattern to the previous system. The Voice part consists of three chords: G#m, Bbm, and G#m.

28

Drum Bass  
Drum Hats  
Drum Snare  
Drum Claps  
El. Guitar  
Bass  
Voice

Detailed description: This block contains the musical score for measures 28, 29, and 30. It features seven staves: Drum Bass, Drum Hats, Drum Snare, Drum Claps, El. Guitar, Bass, and Voice. The Drum Bass, Snare, and Claps parts have a consistent rhythmic pattern. The Drum Hats play a steady eighth-note pattern. The El. Guitar part has a melodic line with some bends and a double bar line in measure 29. The Bass part has a rhythmic line with some rests. The Voice part consists of three chords: G#m, F#m, and G#m.



31

Drum Bass  
Drum Hats  
Drum Snare  
Drum Cymbals  
Drum Claps  
El. Guitar  
Bass  
Voice

Detailed description: This block contains the musical score for measures 31, 32, and 33. It features eight staves: Drum Bass, Drum Hats, Drum Snare, Drum Cymbals, Drum Claps, El. Guitar, Bass, and Voice. The Drum Bass, Snare, and Claps parts continue their patterns. The Drum Hats play a steady eighth-note pattern. The Drum Cymbals part has two asterisks in measure 33. The El. Guitar part has a melodic line with some bends and a double bar line in measure 32. The Bass part has a rhythmic line with some rests. The Voice part consists of three chords: G#m, F#m, and G#m.

34

Drum Bass

Drum Snare

Acc. Guitar

Bass

Pad



37

Acc. Guitar

Pad



39

El. Guitar

Acc. Guitar

Pad



41

El. Guitar

Acc. Guitar

Pad

43

Drum Bass

Drum Snare

Drum Claps

El. Guitar

Acc. Guitar

Pad



45

Drum Bass

Drum Snare

Drum Claps

El. Guitar

Acc. Guitar

Pad



47

Drum Bass  
Drum Snare  
Drum Claps  
El. Guitar  
Acc. Guitar  
Pad

This musical score covers measures 47 and 48. It features six staves: Drum Bass, Drum Snare, Drum Claps, El. Guitar, Acc. Guitar, and Pad. The Drum Bass part consists of a steady eighth-note pattern. The Drum Snare and Drum Claps parts provide a consistent rhythmic accompaniment. The El. Guitar part features a melodic line with various accidentals and phrasing. The Acc. Guitar part provides a harmonic accompaniment with chords and arpeggios. The Pad part features a sustained, atmospheric texture with long notes and some melodic movement.



49

Drum Bass  
Drum Snare  
Drum Claps  
El. Guitar  
Acc. Guitar  
Pad

This musical score covers measures 49 and 50. It features the same six staves as the previous section: Drum Bass, Drum Snare, Drum Claps, El. Guitar, Acc. Guitar, and Pad. The Drum Bass part continues with its eighth-note pattern. The Drum Snare and Drum Claps parts maintain their rhythmic accompaniment. The El. Guitar part continues its melodic line with various accidentals and phrasing. The Acc. Guitar part provides a harmonic accompaniment with chords and arpeggios. The Pad part continues its sustained, atmospheric texture with long notes and some melodic movement.

51

Drum Bass

Drum Snare

Drum Claps

El. Guitar

Acc. Guitar

Pad



54

Drum Bass

Drum Hats

Drum Snare

Drum Claps

El. Guitar

Bass

Voice

57

Drum Bass  
Drum Hats  
Drum Snare  
Drum Claps  
El. Guitar  
Bass  
Voice

Detailed description: This block contains the musical notation for measures 57, 58, and 59. It features seven staves: Drum Bass, Drum Hats, Drum Snare, Drum Claps, El. Guitar, Bass, and Voice. The Drum Bass part has a steady eighth-note pattern. Drum Hats play a consistent eighth-note accompaniment. Drum Snare and Claps have a pattern of quarter notes. The El. Guitar part has a melodic line with slurs and ties. The Bass part has a rhythmic pattern with eighth notes and rests. The Voice part consists of three chords: Bb7, D#m7, and Eb7.



60

Drum Bass  
Drum Hats  
Drum Snare  
Drum Cymbals  
Drum Claps  
El. Guitar  
Bass  
Voice

Detailed description: This block contains the musical notation for measures 60, 61, and 62. It features eight staves: Drum Bass, Drum Hats, Drum Snare, Drum Cymbals, Drum Claps, El. Guitar, Bass, and Voice. The Drum Bass part continues with eighth notes. Drum Hats play eighth notes. Drum Snare and Claps have quarter notes. Drum Cymbals have two asterisks in measures 61 and 62. The El. Guitar part has a melodic line with slurs and ties. The Bass part has a rhythmic pattern with eighth notes and rests. The Voice part consists of four chords: Bb7, D#m7, Eb7, and Bb7.

63

Drum Bass  
Drum Hats  
Drum Snare  
Drum Claps  
El. Guitar  
Bass  
Voice

Detailed description: This block contains the musical score for measures 63, 64, and 65. It features seven staves: Drum Bass, Drum Hats, Drum Snare, Drum Claps, El. Guitar, Bass, and Voice. The Drum Bass part has a simple melodic line. Drum Hats play a consistent rhythmic pattern. Drum Snare and Claps provide a steady accompaniment. The El. Guitar part has a melodic line with some bends. The Bass part has a rhythmic line with some chromaticism. The Voice part has three chords: G major, D major, and G major.



66

Drum Bass  
Drum Hats  
Drum Snare  
Drum Claps  
El. Guitar  
Bass  
Voice

Detailed description: This block contains the musical score for measures 66, 67, and 68. It features seven staves: Drum Bass, Drum Hats, Drum Snare, Drum Claps, El. Guitar, Bass, and Voice. The Drum Bass part has a simple melodic line. Drum Hats play a consistent rhythmic pattern. Drum Snare and Claps provide a steady accompaniment. The El. Guitar part has a melodic line with some bends. The Bass part has a rhythmic line with some chromaticism. The Voice part has three chords: G major, D major, and G major.

69

Drum Bass  
Drum Hats  
Drum Snare  
Drum Claps  
El. Guitar  
Bass  
Voice

This musical score block covers measures 69 to 71. It features seven staves: Drum Bass, Drum Hats, Drum Snare, Drum Claps, El. Guitar, Bass, and Voice. The drum parts include a steady bass line, a consistent hi-hat pattern, and snare/clap accents. The electric guitar and bass lines are melodic and syncopated. The voice part consists of three chords: a D major chord, an F#m chord, and a D major chord.



72

Drum Bass  
Drum Hats  
Drum Snare  
Drum Claps  
El. Guitar  
Bass  
Voice

This musical score block covers measures 72 to 74. It features seven staves: Drum Bass, Drum Hats, Drum Snare, Drum Claps, El. Guitar, Bass, and Voice. The drum parts continue with the established patterns. The electric guitar and bass lines are melodic and syncopated. The voice part consists of three chords: a D major chord, an F#m chord, and a D major chord.

75

Drum Bass

Drum Hats

Drum Snare

Drum Claps

El. Guitar

Bass

Pad

Voice



78



81

El. Guitar

Acc. Guitar

Pad



91

El. Guitar

Acc. Guitar

Pad



93

El. Guitar

Acc. Guitar

Pad



95

El. Guitar

Acc. Guitar

Pad



97

Drum Bass  
Drum Snare  
Drum Claps  
El. Guitar  
Acc. Guitar  
Pad

This musical score block covers measures 97 and 98. It features six staves: Drum Bass, Drum Snare, Drum Claps, El. Guitar, Acc. Guitar, and Pad. The drum parts show a consistent rhythmic pattern with bass, snare, and claps. The electric guitar part has a melodic line with various accidentals and a trill. The acoustic guitar part provides a harmonic accompaniment with chords. The pad part features a complex texture with triplets and sustained notes.



99

Drum Bass  
Drum Snare  
Drum Claps  
El. Guitar  
Acc. Guitar  
Pad

This musical score block covers measures 99 and 100. It features the same six staves as the previous block. The drum parts continue with the established rhythm. The electric guitar part has a melodic line with a trill. The acoustic guitar part provides a harmonic accompaniment with chords. The pad part features a complex texture with triplets and sustained notes.

101

Drum Bass  
Drum Snare  
Drum Claps  
El. Guitar  
Acc. Guitar  
Pad

Detailed description: This musical score covers measures 101 and 102. It features six staves: Drum Bass, Drum Snare, Drum Claps, El. Guitar, Acc. Guitar, and Pad. The Drum Bass part has a steady eighth-note pattern. The Drum Snare and Claps parts provide a consistent rhythmic accompaniment. The El. Guitar part has a melodic line with various accidentals and a trill. The Acc. Guitar part consists of block chords. The Pad part features sustained chords with a triplet of eighth notes in the second measure of each bar.



103

Drum Bass  
Drum Snare  
Drum Claps  
El. Guitar  
Acc. Guitar  
Pad

Detailed description: This musical score covers measures 103 and 104. It features the same six staves as the previous system. The Drum Bass part continues with its eighth-note pattern. The Drum Snare and Claps parts remain consistent. The El. Guitar part has a melodic line with a trill in the second measure of the second bar. The Acc. Guitar part consists of block chords. The Pad part features sustained chords with a triplet of eighth notes in the second measure of each bar.

105

Drum Bass

Drum Snare

Drum Claps

El. Guitar

Acc. Guitar

Pad



108

Drum Bass

Drum Hats

Drum Snare

Drum Claps

El. Guitar

Bass

Voice

111

Drum Bass  
Drum Hats  
Drum Snare  
Drum Claps  
El. Guitar  
Bass  
Voice

Detailed description: This musical score covers measures 111 to 113. It features seven staves: Drum Bass, Drum Hats, Drum Snare, Drum Claps, El. Guitar, Bass, and Voice. The Drum Bass part consists of a steady eighth-note pattern. Drum Hats play a consistent eighth-note accompaniment. Drum Snare and Claps provide a rhythmic backbone with quarter notes and rests. The El. Guitar part features a melodic line with various accidentals and phrasing. The Bass line is a walking bass line with eighth and quarter notes. The Voice part consists of three chords: a D minor triad, a D major triad, and a D minor triad.



114

Drum Bass  
Drum Hats  
Drum Snare  
Drum Cymbals  
Drum Claps  
El. Guitar  
Bass  
Voice

Detailed description: This musical score covers measures 114 to 116. It features eight staves: Drum Bass, Drum Hats, Drum Snare, Drum Cymbals, Drum Claps, El. Guitar, Bass, and Voice. The Drum Bass part continues with its eighth-note pattern. Drum Hats play a consistent eighth-note accompaniment. Drum Snare and Claps provide a rhythmic backbone. Drum Cymbals have two asterisks in measures 115 and 116. The El. Guitar part features a melodic line with various accidentals and phrasing. The Bass line is a walking bass line with eighth and quarter notes. The Voice part consists of three chords: a D major triad, a D minor triad, and a D major triad.

117

Drum Bass

Drum Hats

Drum Snare

Drum Claps

El. Guitar

Bass

Voice



120

Drum Bass

Drum Hats

Drum Snare

Drum Claps


El. Guitar

Bass

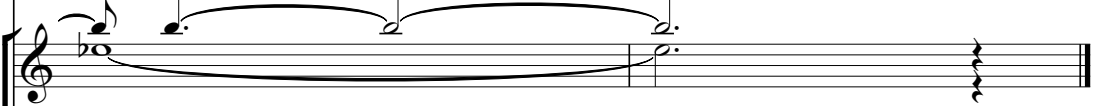
Voice

122


Drum Hats



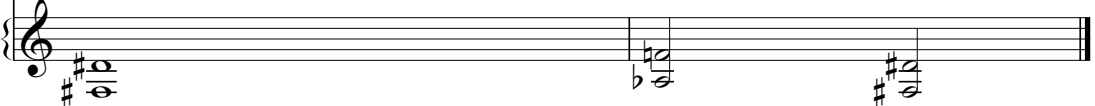
El. Guitar



Bass



Voice



The image displays a page of musical notation for four instruments: Drum Hats, Electric Guitar, Bass, and Voice. The page is numbered 122. The Drum Hats part consists of four eighth notes marked with an 'x' and a final quarter note. The Electric Guitar part features a melodic line with a slur over four notes. The Bass part shows a rhythmic line with eighth and quarter notes. The Voice part is written in a key signature of one sharp and common time, with a vocal line.

Drum Bass

Gorillaz - Feel good inc

♩ = 139,499847



7



13



19



25



31



44



48



53



59



65



71



77



101



106



112



118





Drum Hats

Gorillaz - Feel good inc

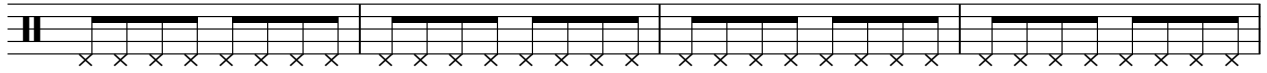
♩ = 139,499847



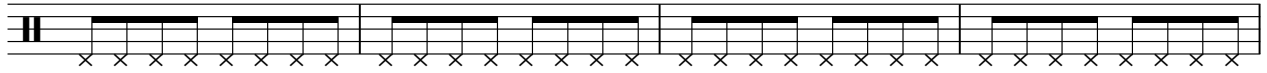
5



9



13



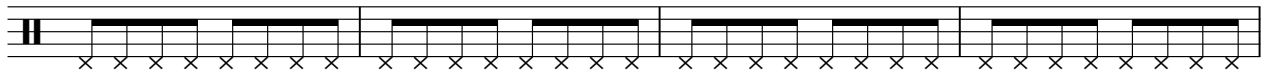
17



21



25



29



32



54



58



62



66



70



74

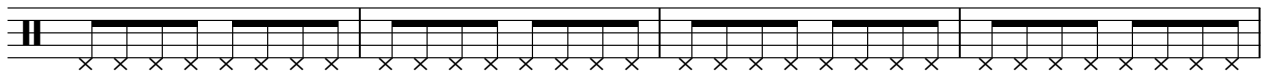


78

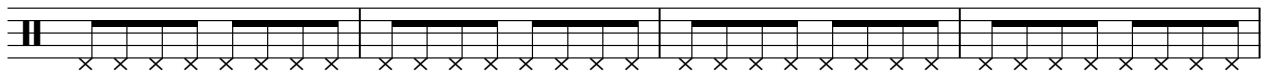
**30**



111



115



119



# Gorillaz - Feel good inc

## Drum Snare

♩ = 139,499847



7



13



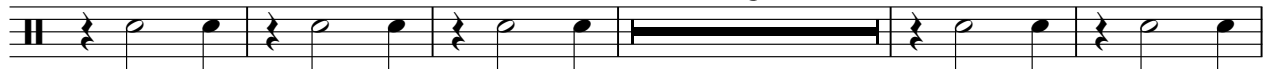
20



26



32



46



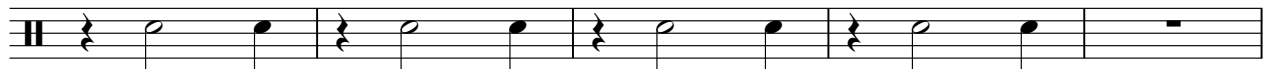
53



59



64



2

Drum Snare

69



75

20



99



105



111



117

2



Drum Cymbals

Gorillaz - Feel good inc

♩ = 139,499847

8 15 7

Musical notation for drum cymbals, measures 1-7. The notation is on a five-line staff with a double bar line on the left and a 4/4 time signature. Measure 1 contains a solid black bar representing a cymbal roll for 8 measures. Measure 2 contains a solid black bar for 15 measures. Measure 3 contains a solid black bar for 7 measures. Asterisks are placed above the staff in measures 2 and 3 to indicate cymbal hits.

33 27

Musical notation for drum cymbals, measures 8-32. The notation is on a five-line staff with a double bar line on the left. Measure 8 contains a solid black bar representing a cymbal roll for 27 measures. Asterisks are placed above the staff in measures 9 and 32 to indicate cymbal hits.

62 53 8

Musical notation for drum cymbals, measures 33-61. The notation is on a five-line staff with a double bar line on the left. Measure 33 contains a solid black bar representing a cymbal roll for 53 measures. Measure 62 contains a solid black bar for 8 measures. Asterisks are placed above the staff in measures 34 and 61 to indicate cymbal hits.

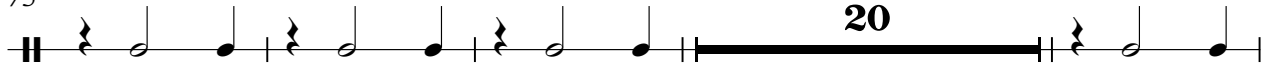


Drum Claps

69



75



99



105



111



117



# Gorillaz - Feel good inc

El. Guitar

♩ = 139,499847

6

11

16

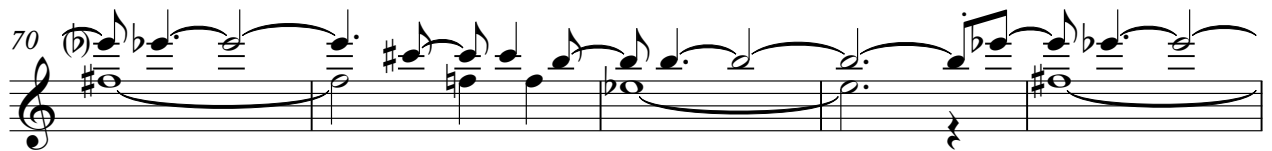
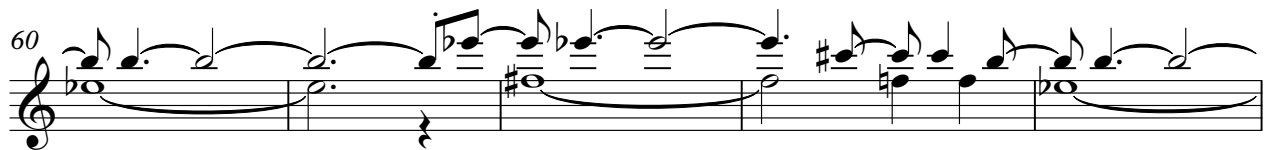
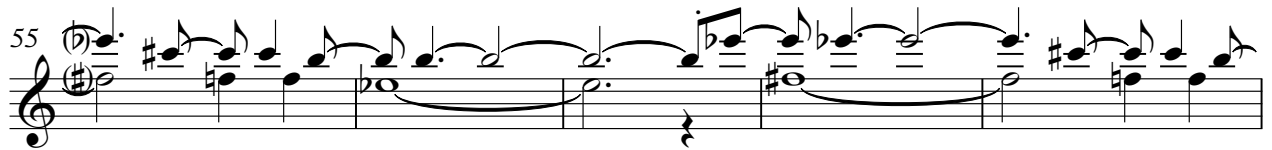
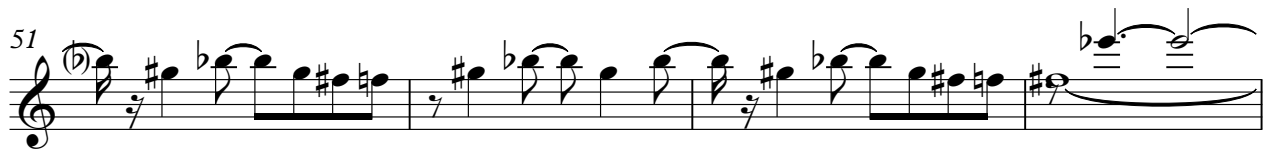
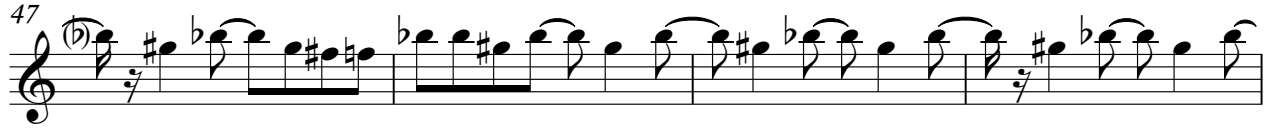
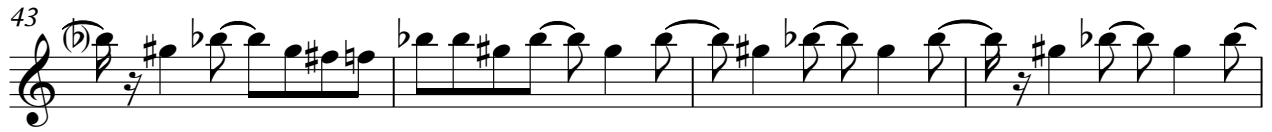
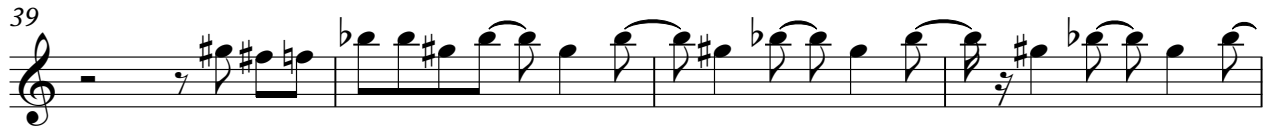
21

26

30

5





86

90

94

98

102

106

110

115

119

♩ = 139,499847

35

38

41

44

47

50

53

28

82

85

88

91

94

97

100

103

106

Gorillaz - Feel good inc

Bass

♩ = 139,499847



5



9



13



17



21



25



29



33



18

54



58



62



66



70



74



78



110



114



118



121



Gorillaz - Feel good inc

Pad

♩ = 139,499847

**34**

Musical notation for measure 34, featuring a treble clef, 4/4 time signature, and a complex melodic line with a triplet.

37

Musical notation for measure 37, featuring a treble clef, 4/4 time signature, and a complex melodic line with a triplet.

40

Musical notation for measure 40, featuring a treble clef, 4/4 time signature, and a complex melodic line with a triplet.

43

Musical notation for measure 43, featuring a treble clef, 4/4 time signature, and a complex melodic line with a triplet.

46

Musical notation for measure 46, featuring a treble clef, 4/4 time signature, and a complex melodic line with a triplet.

49

Musical notation for measure 49, featuring a treble clef, 4/4 time signature, and a complex melodic line with a triplet.

51

**23**

Musical notation for measure 51, featuring a treble clef, 4/4 time signature, and a complex melodic line with a triplet.





# Gorillaz - Feel good inc

Voice

♩ = 139,499847

9

17

25

33 **20**

58

66

74 **30**

110

117