

Mon coeur se recommande a vous

$\text{♩} = 152,000320$

b
s
a
t

6

b
s
a
t

12

b
s
a
t

2

18

Score for measures 18-23. The system includes four staves: bass (b), soprano (s), alto (a), and tenor (t). The key signature has one flat. Measure 18 starts with a treble clef on the soprano staff. The music consists of eighth and quarter notes in the bass and soprano parts, with a steady accompaniment in the alto and tenor parts.

24

$\text{♩} = 152,000320$

Score for measures 24-28. The system includes four staves: bass (b), soprano (s), alto (a), and tenor (t). The key signature has one flat. Measure 24 starts with a treble clef on the soprano staff. The tempo marking is $\text{♩} = 152,000320$. The music continues with similar rhythmic patterns as the previous system.

29

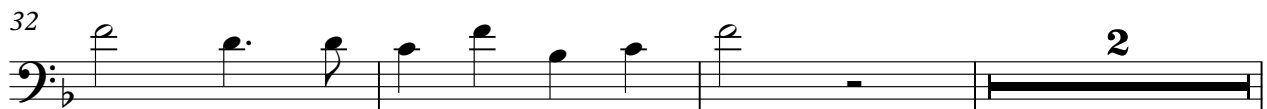
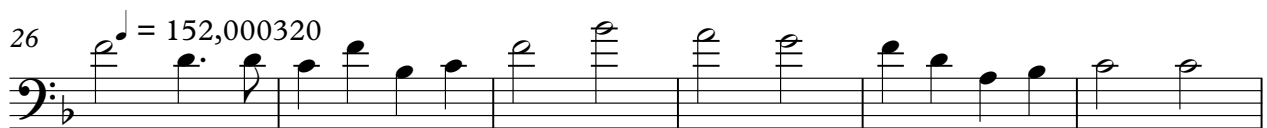
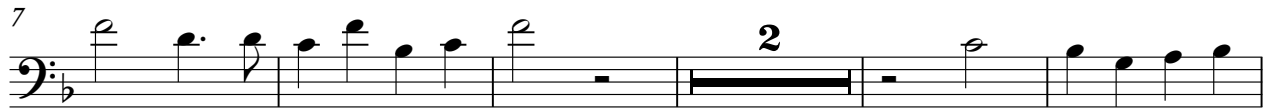
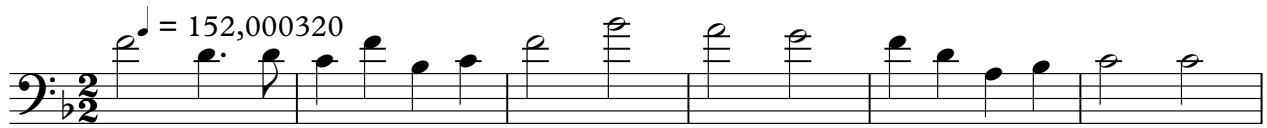
Score for measures 29-34. The system includes four staves: bass (b), soprano (s), alto (a), and tenor (t). The key signature has one flat. Measure 29 starts with a treble clef on the soprano staff. The music concludes with a final cadence in the soprano and alto parts.

35

The image shows a musical score for guitar, consisting of four staves labeled 'b', 's', 'a', and 't'. The score is written in a key signature of one flat (B-flat) and a 12/8 time signature. The 'b' staff is in bass clef, the 's' staff is in treble clef, the 'a' staff is in alto clef (C-clef on the second line), and the 't' staff is in bass clef. The music is organized into six measures. The 'b' staff begins with a whole rest in the first measure, followed by a half note G2 in the second, and eighth notes G2, F2, E2, D2, C2, B1, A1, G1 in the third. The 's' staff has quarter notes G4, A4, B4, C5, B4, A4, G4, F4, E4, D4, C4, B3, A3, G3 in the first measure, followed by quarter notes G3, F3, E3, D3, C3, B2, A2, G2, F2, E2, D2, C2, B1, A1, G1 in the second, quarter notes G1, F1, E1, D1, C1, B0, A0, G0, F0, E0, D0, C0, B-1, A-1, G-1 in the third, quarter notes G-1, F-1, E-1, D-1, C-1, B-2, A-2, G-2, F-2, E-2, D-2, C-2, B-3, A-3, G-3 in the fourth, quarter notes G-3, F-3, E-3, D-3, C-3, B-4, A-4, G-4, F-4, E-4, D-4, C-4, B-5, A-5, G-5 in the fifth, and a whole note G-5 in the sixth. The 'a' staff has a whole rest in the first measure, followed by a half note G2 in the second, and eighth notes G2, F2, E2, D2, C2, B1, A1, G1 in the third. The 't' staff has a whole rest in the first measure, followed by a half note G2 in the second, and eighth notes G2, F2, E2, D2, C2, B1, A1, G1 in the third. The 'a' and 't' staves have a 'be' annotation above the first note in the second measure.

Mon coeur se recommande a vous

b



File may be freely copied and distributed
www.cipoo.net

Mon coeur se recommande a vous

s

♩ = 152,000320



7



13



19



25

♩ = 152,000320



31



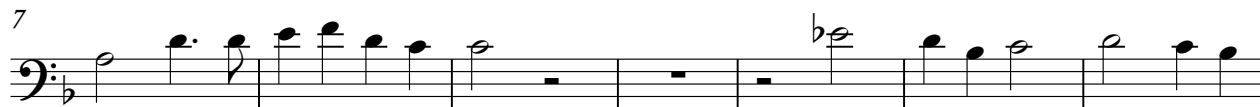
36



File may be freely copied and distributed
www.cipoo.net

Mon coeur se recommande a vous

t



File may be freely copied and distributed
www.cipoo.net