

Awolnation-Sail

MIDI Out

Drumkit

Hand Clap

piano right

guitar1

solo guitar

bass

synth

bass 2

piano left

vocal

The score is in 4/4 time. The guitar1 part features a sequence of chords: F#m, Gm, Am, Bm, C#m, Dm, E, F#m, Gm, Am, Bm, C#m, Dm, E, F#m, Gm, Am, Bm, C#m, Dm, E. The piano left part plays a steady bass line with chords: F#m, Gm, Am, Bm, C#m, Dm, E, F#m, Gm, Am, Bm, C#m, Dm, E, F#m, Gm, Am, Bm, C#m, Dm, E.



guitar1

bass 2

The guitar1 part continues with a sequence of chords: F#m, Gm, Am, Bm, C#m, Dm, E, F#m, Gm, Am, Bm, C#m, Dm, E, F#m, Gm, Am, Bm, C#m, Dm, E. The bass 2 part continues with a steady bass line with chords: F#m, Gm, Am, Bm, C#m, Dm, E, F#m, Gm, Am, Bm, C#m, Dm, E, F#m, Gm, Am, Bm, C#m, Dm, E.

9

Drumkit

guitar1

bass

synth

bass 2

Detailed description: This musical score covers measures 9 through 12. The Drumkit part features a steady 4/4 beat with a snare on the second and fourth beats. Guitar1 plays a rhythmic pattern of eighth notes in a D major key signature, with a flat sign indicating a lowered note in the second measure. The bass line consists of a simple eighth-note pattern. The synth part features two sixteenth-note runs, each marked with a '6' and a bracket. Bass 2 provides a complex accompaniment with a series of chords and notes, including a flat sign in the second measure.



13

MIDI Out

Drumkit

Hand Clap

guitar1

bass

synth

bass 2

Detailed description: This musical score covers measures 13 through 16. MIDI Out has a single note in the fourth measure. The Drumkit part has a snare on the second and fourth beats, with a cymbal on the fourth beat of measure 14. Hand Clap has a single clap on the second and fourth beats. Guitar1 continues with a similar eighth-note pattern, changing key signatures to D minor and then back to D major. The bass line has a simple eighth-note pattern with a sharp sign in the second measure. The synth part features two sixteenth-note runs marked with '6' and a triplet marked with '3'. Bass 2 provides a complex accompaniment with a series of chords and notes, including a sharp sign in the second measure.

17

Drumkit

Hand Clap

bass

synth

vocal



21

Drumkit

Hand Clap

bass

synth

vocal



25

MIDI Out

Drumkit

Hand Clap

bass

synth

29

MIDI Out

Drumkit

Hand Clap

guitar1

bass

synth

bass 2



33

MIDI Out

Drumkit

Hand Clap

bass

synth

37

MIDI Out

Drumkit

Hand Clap

guitar1

bass

synth

bass 2



41

MIDI Out

Drumkit

Hand Clap

bass

synth

vocal

45

MIDI Out

Drumkit

Hand Clap

bass

synth

vocal



49

MIDI Out

Drumkit

Hand Clap

bass

synth

53

MIDI Out
Drumkit
Hand Clap
guitar1
bass
synth
bass 2

Detailed description: This musical score block covers measures 53 to 56. It features seven staves: MIDI Out, Drumkit, Hand Clap, guitar1, bass, synth, and bass 2. The MIDI Out staff contains a melodic line with eighth and sixteenth notes, including a triplet of eighth notes in measure 54. The Drumkit staff shows a pattern of eighth notes with some rests. The Hand Clap staff has a simple rhythmic pattern of quarter notes. The guitar1 staff has a series of chords, some with accidentals. The bass staff has a few notes, including a triplet of eighth notes in measure 54. The synth staff has two sixteenth-note sextuplets in measures 53 and 54, and a triplet of eighth notes in measure 55. The bass 2 staff has a series of eighth notes, including a triplet in measure 55.



57

MIDI Out
Drumkit
Hand Clap
bass
synth

Detailed description: This musical score block covers measures 57 to 60. It features five staves: MIDI Out, Drumkit, Hand Clap, bass, and synth. The MIDI Out staff continues the melodic line with eighth and sixteenth notes, including a triplet of eighth notes in measure 57. The Drumkit staff has a pattern of eighth notes with rests. The Hand Clap staff has a simple rhythmic pattern of quarter notes. The bass staff has a few notes, including a triplet of eighth notes in measure 57. The synth staff has two sixteenth-note sextuplets in measures 57 and 58, and a triplet of eighth notes in measure 59.

61

MIDI Out
Drumkit
Hand Clap
guitar1
bass
synth
bass 2

Detailed description: This musical score block covers measures 61 to 64. It features seven staves: MIDI Out, Drumkit, Hand Clap, guitar1, bass, synth, and bass 2. The MIDI Out staff shows a melodic line with notes like G#4, A4, B4, and C5. The Drumkit staff has a pattern of eighth notes with accents. The Hand Clap staff has a simple rhythmic pattern. The guitar1 staff has a series of chords and single notes. The bass staff has a simple bass line. The synth staff has a complex melodic line with sixteenth notes and triplets. The bass 2 staff has a complex melodic line with sixteenth notes and triplets.



65

MIDI Out
Drumkit
Hand Clap
solo guitar
bass
synth
vocal

Detailed description: This musical score block covers measures 65 to 68. It features seven staves: MIDI Out, Drumkit, Hand Clap, solo guitar, bass, synth, and vocal. The MIDI Out staff shows a melodic line with notes like G#4, A4, B4, and C5. The Drumkit staff has a pattern of eighth notes with accents. The Hand Clap staff has a simple rhythmic pattern. The solo guitar staff has a series of chords and single notes. The bass staff has a simple bass line. The synth staff has a complex melodic line with sixteenth notes and triplets. The vocal staff has a simple melodic line.

69

MIDI Out
Drumkit
Hand Clap
guitar1
solo guitar
bass
synth
bass 2
vocal

Detailed description: This musical score covers measures 69 to 72. It features eight staves: MIDI Out, Drumkit, Hand Clap, guitar1, solo guitar, bass, synth, and vocal. The MIDI Out staff shows a sequence of notes with sharp signs. The Drumkit staff uses 'x' for cymbals and vertical lines for other drums. The Hand Clap staff has a simple rhythmic pattern. The guitar1 staff has a melodic line with various accidentals. The solo guitar staff has a more complex melodic line. The bass staff has a simple bass line. The synth staff has a sixteenth-note pattern with a '6' above it. The bass 2 staff has a similar sixteenth-note pattern. The vocal staff has a few notes with a '3' above it.



73

Drumkit
Hand Clap
piano right
bass
synth
piano left

Detailed description: This musical score covers measures 73 to 76. It features six staves: Drumkit, Hand Clap, piano right, bass, synth, and piano left. The Drumkit staff has a rhythmic pattern with a '3' above it. The Hand Clap staff has a simple rhythmic pattern. The piano right staff has a melodic line with various accidentals. The bass staff has a simple bass line. The synth staff has a sixteenth-note pattern with a '6' above it. The piano left staff has a complex accompaniment with many notes and accidentals.

77

Drumkit

Hand Clap

piano right

bass

synth

piano left



81

MIDI Out

Drumkit

Hand Clap

piano right

bass

synth

piano left

84

MIDI Out
Drumkit
Hand Clap
piano right
bass
synth
piano left

Detailed description: This system contains measures 84, 85, and 86. The MIDI Out staff shows a melodic line with notes G4, A4, B4, C5, B4, A4, G4. The Drumkit staff has a steady eighth-note pattern. The Hand Clap staff has a simple bass line. The piano right staff has a melodic line with notes G4, A4, B4, C5, B4, A4, G4. The bass staff has a simple bass line. The synth staff has a melodic line with notes G4, A4, B4, C5, B4, A4, G4. The piano left staff has a complex accompaniment with many notes.



87

MIDI Out
Drumkit
Hand Clap
piano right
solo guitar
bass
synth
piano left
vocal

Detailed description: This system contains measures 87, 88, 89, and 90. The MIDI Out staff shows a melodic line with notes G4, A4, B4, C5, B4, A4, G4. The Drumkit staff has a steady eighth-note pattern. The Hand Clap staff has a simple bass line. The piano right staff has a melodic line with notes G4, A4, B4, C5, B4, A4, G4. The solo guitar staff has a simple bass line. The bass staff has a simple bass line. The synth staff has a melodic line with notes G4, A4, B4, C5, B4, A4, G4. The piano left staff has a complex accompaniment with many notes. The vocal staff has a simple bass line.

91

MIDI Out
Drumkit
Hand Clap
solo guitar
bass
synth
vocal

Detailed description: This musical score covers measures 91 to 94. The MIDI Out track shows a sequence of notes: a whole rest, a quarter rest, a quarter note G#4, a whole rest, a quarter rest, and a quarter note G#4. The Drumkit track features a consistent pattern of eighth notes. The Hand Clap track has a simple pattern of quarter notes. The solo guitar track plays a melodic line with notes G#4, A4, Bb4, B4, C5, D5, E5, F5, G5, A5, Bb5, C6, D6, E6, F6, G6, A6, Bb6, C7, D7, E7, F7, G7, A7, Bb7, C8, D8, E8, F8, G8, A8, Bb8, C9, D9, E9, F9, G9, A9, Bb9, C10, D10, E10, F10, G10, A10, Bb10, C11, D11, E11, F11, G11, A11, Bb11, C12, D12, E12, F12, G12, A12, Bb12, C13, D13, E13, F13, G13, A13, Bb13, C14, D14, E14, F14, G14, A14, Bb14, C15, D15, E15, F15, G15, A15, Bb15, C16, D16, E16, F16, G16, A16, Bb16, C17, D17, E17, F17, G17, A17, Bb17, C18, D18, E18, F18, G18, A18, Bb18, C19, D19, E19, F19, G19, A19, Bb19, C20, D20, E20, F20, G20, A20, Bb20, C21, D21, E21, F21, G21, A21, Bb21, C22, D22, E22, F22, G22, A22, Bb22, C23, D23, E23, F23, G23, A23, Bb23, C24, D24, E24, F24, G24, A24, Bb24, C25, D25, E25, F25, G25, A25, Bb25, C26, D26, E26, F26, G26, A26, Bb26, C27, D27, E27, F27, G27, A27, Bb27, C28, D28, E28, F28, G28, A28, Bb28, C29, D29, E29, F29, G29, A29, Bb29, C30, D30, E30, F30, G30, A30, Bb30, C31, D31, E31, F31, G31, A31, Bb31, C32, D32, E32, F32, G32, A32, Bb32, C33, D33, E33, F33, G33, A33, Bb33, C34, D34, E34, F34, G34, A34, Bb34, C35, D35, E35, F35, G35, A35, Bb35, C36, D36, E36, F36, G36, A36, Bb36, C37, D37, E37, F37, G37, A37, Bb37, C38, D38, E38, F38, G38, A38, Bb38, C39, D39, E39, F39, G39, A39, Bb39, C40, D40, E40, F40, G40, A40, Bb40, C41, D41, E41, F41, G41, A41, Bb41, C42, D42, E42, F42, G42, A42, Bb42, C43, D43, E43, F43, G43, A43, Bb43, C44, D44, E44, F44, G44, A44, Bb44, C45, D45, E45, F45, G45, A45, Bb45, C46, D46, E46, F46, G46, A46, Bb46, C47, D47, E47, F47, G47, A47, Bb47, C48, D48, E48, F48, G48, A48, Bb48, C49, D49, E49, F49, G49, A49, Bb49, C50, D50, E50, F50, G50, A50, Bb50, C51, D51, E51, F51, G51, A51, Bb51, C52, D52, E52, F52, G52, A52, Bb52, C53, D53, E53, F53, G53, A53, Bb53, C54, D54, E54, F54, G54, A54, Bb54, C55, D55, E55, F55, G55, A55, Bb55, C56, D56, E56, F56, G56, A56, Bb56, C57, D57, E57, F57, G57, A57, Bb57, C58, D58, E58, F58, G58, A58, Bb58, C59, D59, E59, F59, G59, A59, Bb59, C60, D60, E60, F60, G60, A60, Bb60, C61, D61, E61, F61, G61, A61, Bb61, C62, D62, E62, F62, G62, A62, Bb62, C63, D63, E63, F63, G63, A63, Bb63, C64, D64, E64, F64, G64, A64, Bb64, C65, D65, E65, F65, G65, A65, Bb65, C66, D66, E66, F66, G66, A66, Bb66, C67, D67, E67, F67, G67, A67, Bb67, C68, D68, E68, F68, G68, A68, Bb68, C69, D69, E69, F69, G69, A69, Bb69, C70, D70, E70, F70, G70, A70, Bb70, C71, D71, E71, F71, G71, A71, Bb71, C72, D72, E72, F72, G72, A72, Bb72, C73, D73, E73, F73, G73, A73, Bb73, C74, D74, E74, F74, G74, A74, Bb74, C75, D75, E75, F75, G75, A75, Bb75, C76, D76, E76, F76, G76, A76, Bb76, C77, D77, E77, F77, G77, A77, Bb77, C78, D78, E78, F78, G78, A78, Bb78, C79, D79, E79, F79, G79, A79, Bb79, C80, D80, E80, F80, G80, A80, Bb80, C81, D81, E81, F81, G81, A81, Bb81, C82, D82, E82, F82, G82, A82, Bb82, C83, D83, E83, F83, G83, A83, Bb83, C84, D84, E84, F84, G84, A84, Bb84, C85, D85, E85, F85, G85, A85, Bb85, C86, D86, E86, F86, G86, A86, Bb86, C87, D87, E87, F87, G87, A87, Bb87, C88, D88, E88, F88, G88, A88, Bb88, C89, D89, E89, F89, G89, A89, Bb89, C90, D90, E90, F90, G90, A90, Bb90, C91, D91, E91, F91, G91, A91, Bb91, C92, D92, E92, F92, G92, A92, Bb92, C93, D93, E93, F93, G93, A93, Bb93, C94, D94, E94, F94, G94, A94, Bb94, C95, D95, E95, F95, G95, A95, Bb95, C96, D96, E96, F96, G96, A96, Bb96, C97, D97, E97, F97, G97, A97, Bb97, C98, D98, E98, F98, G98, A98, Bb98, C99, D99, E99, F99, G99, A99, Bb99, C100, D100, E100, F100, G100, A100, Bb100, C101, D101, E101, F101, G101, A101, Bb101, C102, D102, E102, F102, G102, A102, Bb102, C103, D103, E103, F103, G103, A103, Bb103, C104, D104, E104, F104, G104, A104, Bb104, C105, D105, E105, F105, G105, A105, Bb105, C106, D106, E106, F106, G106, A106, Bb106, C107, D107, E107, F107, G107, A107, Bb107, C108, D108, E108, F108, G108, A108, Bb108, C109, D109, E109, F109, G109, A109, Bb109, C110, D110, E110, F110, G110, A110, Bb110, C111, D111, E111, F111, G111, A111, Bb111, C112, D112, E112, F112, G112, A112, Bb112, C113, D113, E113, F113, G113, A113, Bb113, C114, D114, E114, F114, G114, A114, Bb114, C115, D115, E115, F115, G115, A115, Bb115, C116, D116, E116, F116, G116, A116, Bb116, C117, D117, E117, F117, G117, A117, Bb117, C118, D118, E118, F118, G118, A118, Bb118, C119, D119, E119, F119, G119, A119, Bb119, C120, D120, E120, F120, G120, A120, Bb120, C121, D121, E121, F121, G121, A121, Bb121, C122, D122, E122, F122, G122, A122, Bb122, C123, D123, E123, F123, G123, A123, Bb123, C124, D124, E124, F124, G124, A124, Bb124, C125, D125, E125, F125, G125, A125, Bb125, C126, D126, E126, F126, G126, A126, Bb126, C127, D127, E127, F127, G127, A127, Bb127, C128, D128, E128, F128, G128, A128, Bb128, C129, D129, E129, F129, G129, A129, Bb129, C130, D130, E130, F130, G130, A130, Bb130, C131, D131, E131, F131, G131, A131, Bb131, C132, D132, E132, F132, G132, A132, Bb132, C133, D133, E133, F133, G133, A133, Bb133, C134, D134, E134, F134, G134, A134, Bb134, C135, D135, E135, F135, G135, A135, Bb135, C136, D136, E136, F136, G136, A136, Bb136, C137, D137, E137, F137, G137, A137, Bb137, C138, D138, E138, F138, G138, A138, Bb138, C139, D139, E139, F139, G139, A139, Bb139, C140, D140, E140, F140, G140, A140, Bb140, C141, D141, E141, F141, G141, A141, Bb141, C142, D142, E142, F142, G142, A142, Bb142, C143, D143, E143, F143, G143, A143, Bb143, C144, D144, E144, F144, G144, A144, Bb144, C145, D145, E145, F145, G145, A145, Bb145, C146, D146, E146, F146, G146, A146, Bb146, C147, D147, E147, F147, G147, A147, Bb147, C148, D148, E148, F148, G148, A148, Bb148, C149, D149, E149, F149, G149, A149, Bb149, C150, D150, E150, F150, G150, A150, Bb150, C151, D151, E151, F151, G151, A151, Bb151, C152, D152, E152, F152, G152, A152, Bb152, C153, D153, E153, F153, G153, A153, Bb153, C154, D154, E154, F154, G154, A154, Bb154, C155, D155, E155, F155, G155, A155, Bb155, C156, D156, E156, F156, G156, A156, Bb156, C157, D157, E157, F157, G157, A157, Bb157, C158, D158, E158, F158, G158, A158, Bb158, C159, D159, E159, F159, G159, A159, Bb159, C160, D160, E160, F160, G160, A160, Bb160, C161, D161, E161, F161, G161, A161, Bb161, C162, D162, E162, F162, G162, A162, Bb162, C163, D163, E163, F163, G163, A163, Bb163, C164, D164, E164, F164, G164, A164, Bb164, C165, D165, E165, F165, G165, A165, Bb165, C166, D166, E166, F166, G166, A166, Bb166, C167, D167, E167, F167, G167, A167, Bb167, C168, D168, E168, F168, G168, A168, Bb168, C169, D169, E169, F169, G169, A169, Bb169, C170, D170, E170, F170, G170, A170, Bb170, C171, D171, E171, F171, G171, A171, Bb171, C172, D172, E172, F172, G172, A172, Bb172, C173, D173, E173, F173, G173, A173, Bb173, C174, D174, E174, F174, G174, A174, Bb174, C175, D175, E175, F175, G175, A175, Bb175, C176, D176, E176, F176, G176, A176, Bb176, C177, D177, E177, F177, G177, A177, Bb177, C178, D178, E178, F178, G178, A178, Bb178, C179, D179, E179, F179, G179, A179, Bb179, C180, D180, E180, F180, G180, A180, Bb180, C181, D181, E181, F181, G181, A181, Bb181, C182, D182, E182, F182, G182, A182, Bb182, C183, D183, E183, F183, G183, A183, Bb183, C184, D184, E184, F184, G184, A184, Bb184, C185, D185, E185, F185, G185, A185, Bb185, C186, D186, E186, F186, G186, A186, Bb186, C187, D187, E187, F187, G187, A187, Bb187, C188, D188, E188, F188, G188, A188, Bb188, C189, D189, E189, F189, G189, A189, Bb189, C190, D190, E190, F190, G190, A190, Bb190, C191, D191, E191, F191, G191, A191, Bb191, C192, D192, E192, F192, G192, A192, Bb192, C193, D193, E193, F193, G193, A193, Bb193, C194, D194, E194, F194, G194, A194, Bb194, C195, D195, E195, F195, G195, A195, Bb195, C196, D196, E196, F196, G196, A196, Bb196, C197, D197, E197, F197, G197, A197, Bb197, C198, D198, E198, F198, G198, A198, Bb198, C199, D199, E199, F199, G199, A199, Bb199, C200, D200, E200, F200, G200, A200, Bb200, C201, D201, E201, F201, G201, A201, Bb201, C202, D202, E202, F202, G202, A202, Bb202, C203, D203, E203, F203, G203, A203, Bb203, C204, D204, E204, F204, G204, A204, Bb204, C205, D205, E205, F205, G205, A205, Bb205, C206, D206, E206, F206, G206, A206, Bb206, C207, D207, E207, F207, G207, A207, Bb207, C208, D208, E208, F208, G208, A208, Bb208, C209, D209, E209, F209, G209, A209, Bb209, C210, D210, E210, F210, G210, A210, Bb210, C211, D211, E211, F211, G211, A211, Bb211, C212, D212, E212, F212, G212, A212, Bb212, C213, D213, E213, F213, G213, A213, Bb213, C214, D214, E214, F214, G214, A214, Bb214, C215, D215, E215, F215, G215, A215, Bb215, C216, D216, E216, F216, G216, A216, Bb216, C217, D217, E217, F217, G217, A217, Bb217, C218, D218, E218, F218, G218, A218, Bb218, C219, D219, E219, F219, G219, A219, Bb219, C220, D220, E220, F220, G220, A220, Bb220, C221, D221, E221, F221, G221, A221, Bb221, C222, D222, E222, F222, G222, A222, Bb222, C223, D223, E223, F223, G223, A223, Bb223, C224, D224, E224, F224, G224, A224, Bb224, C225, D225, E225, F225, G225, A225, Bb225, C226, D226, E226, F226, G226, A226, Bb226, C227, D227, E227, F227, G227, A227, Bb227, C228, D228, E228, F228, G228, A228, Bb228, C229, D229, E229, F229, G229, A229, Bb229, C230, D230, E230, F230, G230, A230, Bb230, C231, D231, E231, F231, G231, A231, Bb231, C232, D232, E232, F232, G232, A232, Bb232, C233, D233, E233, F233, G233, A233, Bb233, C234, D234, E234, F234, G234, A234, Bb234, C235, D235, E235, F235, G235, A235, Bb235, C236, D236, E236, F236, G236, A236, Bb236, C237, D237, E237, F237, G237, A237, Bb237, C238, D238, E238, F238, G238, A238, Bb238, C239, D239, E239, F239, G239, A239, Bb239, C240, D240, E240, F240, G240, A240, Bb240, C241, D241, E241, F241, G241, A241, Bb241, C242, D242, E242, F242, G242, A242, Bb242, C243, D243, E243, F243, G243, A243, Bb243, C244, D244, E244, F244, G244, A244, Bb244, C245, D245, E245, F245, G245, A245, Bb245, C246, D246, E246, F246, G246, A246, Bb246, C247, D247, E247, F247, G247, A247, Bb247, C248, D248, E248, F248, G248, A248, Bb248, C249, D249, E249, F249, G249, A249, Bb249, C250, D250, E250, F250, G250, A250, Bb250, C251, D251, E251, F251, G251, A251, Bb251, C252, D252, E252, F252, G252, A252, Bb252, C253, D253, E253, F253, G253, A253, Bb253, C254, D254, E254, F254, G254, A254, Bb254, C255, D255, E255, F255, G255, A255, Bb255, C256, D256, E256, F256, G256, A256, Bb256, C257, D257, E257, F257, G257, A257, Bb257, C258, D258, E258, F258, G258, A258, Bb258, C259, D259, E259, F259, G259, A259, Bb259, C260, D260, E260, F260, G260, A260, Bb260, C261, D261, E261, F261, G261, A261, Bb261, C262, D262, E262, F262, G262, A262, Bb262, C263, D263, E263, F263, G263, A263, Bb263, C264, D264, E264, F264, G264, A264, Bb264, C265, D265, E265, F265, G265, A265, Bb265, C266, D266, E266, F266, G266, A266, Bb266, C267, D267, E267, F267, G267, A267, Bb267, C268, D268, E268, F268, G268, A268, Bb268, C269, D269, E269, F269, G269, A269, Bb269, C270, D270, E270, F270, G270, A270, Bb270, C271, D271, E271, F271, G271, A271, Bb271, C272, D272, E272, F272, G272, A272, Bb272, C273, D273, E273, F273, G273, A273, Bb273, C274, D274, E274, F274, G274, A274, Bb274, C275, D275, E275, F275, G275, A275, Bb275, C276, D276, E276, F276, G276, A276, Bb276, C277, D277, E277, F277, G277, A277, Bb277, C278, D278, E278, F278, G278, A278, Bb278, C279, D279, E279, F279, G279, A279, Bb279, C280, D280, E280, F280, G280, A280, Bb280, C281, D281, E281, F281, G281, A281, Bb281, C282, D282, E282, F282, G282, A282, Bb282, C283, D283, E283, F283, G283, A283, Bb283, C284, D284, E284, F284, G284, A284, Bb284, C285, D285, E285, F285, G285, A285, Bb285, C286, D286, E286, F286, G286, A286, Bb286, C287, D287, E287, F287, G287, A287, Bb287, C288, D288, E288, F288, G288, A288, Bb288, C289, D289, E289, F289, G289, A289, Bb289, C290, D290, E290, F290, G290, A290, Bb290, C291, D291, E291, F291, G291, A291, Bb291, C292, D292, E292, F292, G292, A292, Bb292, C293, D293, E293, F293, G293, A293, Bb293, C294, D294, E294, F294, G294, A294, Bb294, C295, D295, E295, F295, G295, A295, Bb295, C296, D296, E296, F296, G296, A296, Bb296, C297, D297, E297, F297, G297, A297, Bb297, C298, D298, E298, F298, G298, A298, Bb298, C299, D299, E299, F299, G299, A299, Bb299, C300, D300, E300, F300, G300, A300, Bb300, C301, D301, E301, F301, G301, A301, Bb301, C302, D302, E302, F302, G302, A302, Bb302, C303, D303, E303, F303, G303, A303, Bb303, C304, D304, E304, F304, G304, A304, Bb304, C305, D305, E305, F305, G305, A305, Bb305, C306, D306, E306, F306, G306, A306, Bb306, C307, D307, E307, F307, G307, A307, Bb307, C308, D308, E308, F308, G308, A308, Bb308, C309, D309, E309, F309, G309, A309, Bb309, C310, D310, E310, F310, G310, A310, Bb310, C311, D311, E311, F311, G311, A311, Bb311, C312, D312, E312, F312, G312, A312, Bb312, C313, D313, E313, F313, G313, A313, Bb313, C314, D314, E314, F314, G314, A314, Bb314, C315, D315, E315, F315, G315, A315, Bb315, C316, D316, E316, F316, G316, A316, Bb316, C317, D317, E317, F317, G317, A317, Bb317, C318, D318, E318, F318, G318, A318, Bb318, C319, D319, E319, F319, G319, A319, Bb319, C320, D320, E320, F320, G320, A320, Bb320, C321, D321, E321, F321, G321, A321, Bb321, C322, D322, E322, F322, G322, A322, Bb322, C323, D323, E323, F323, G323, A323, Bb323, C324, D324, E324, F324, G324, A324, Bb324, C325, D325, E325, F325, G325, A325, Bb325, C326, D326, E326, F326, G326, A326, Bb326, C327, D327, E327, F327, G327, A327, Bb327, C328, D328, E328, F328, G328, A328, Bb328, C329, D329, E329, F329, G329, A329, Bb329, C330, D330, E330, F330, G330, A330, Bb330, C331, D331, E331, F331, G331, A331, Bb331, C332, D332, E332, F332, G332, A332, Bb332, C333, D333, E333, F333, G333, A333, Bb333, C334, D334, E334, F334, G334, A334, Bb334, C335, D335, E335, F335, G335, A335, Bb335, C336, D336, E336, F336, G336, A336, Bb336, C337, D337, E337, F337, G337, A337, Bb337, C338, D338, E338, F338, G338, A338, Bb338, C339, D339, E339, F339, G339, A339, Bb339, C340, D340, E340, F340, G340, A340, Bb340, C341, D341, E341, F341, G341, A341, Bb341, C342, D342, E342, F342, G342, A342, Bb342, C343, D343, E343, F343, G343, A343, Bb343, C344, D344, E344, F344, G344, A344, Bb344, C345, D345, E345, F345, G345, A345, Bb345, C346, D346, E346, F346, G346, A346, Bb346, C347, D347, E347, F347, G347, A347, Bb347, C348, D348, E348, F348, G348, A348, Bb348, C349, D349, E349, F349, G349, A349, Bb349, C350, D350, E350, F350, G350, A350, Bb350, C351, D351, E351, F351, G351, A351, Bb351, C352, D352, E352, F352, G352, A352, Bb352, C353, D353, E353, F353, G353, A353, Bb353, C354, D354, E354, F354, G354, A354, Bb354, C355, D355, E355, F355, G355, A355, Bb355, C356, D356, E356, F356, G356, A356, Bb356, C357, D357, E357, F357, G357, A357, Bb357, C358, D358, E358, F358, G358, A358, Bb358, C359, D359, E359, F359, G359, A359, Bb359, C360, D360, E360, F360, G360, A360, Bb360, C361, D361, E361, F361, G361, A361, Bb361, C3

99

MIDI Out
Drumkit
Hand Clap
solo guitar
bass
synth
vocal

Detailed description: This system contains measures 99 through 102. The MIDI Out track has rests in measures 99 and 100, followed by a quarter note with a sharp sign in measures 101 and 102. The Drumkit track features a consistent rhythmic pattern of eighth notes. The Hand Clap track has a single eighth note in measures 99 and 100, and a quarter note in measures 101 and 102. The solo guitar track plays a melodic line with various accidentals. The bass track has a single bass note in measure 99 and a quarter note with a sharp sign in measure 101. The synth track features two sixteenth-note sextuplets in measures 99 and 101. The vocal track has a half note with a sharp sign in measure 99 and a quarter note with a flat sign in measure 101.



103

MIDI Out
Drumkit
Hand Clap
guitar1
solo guitar
bass
synth
bass 2
vocal

Detailed description: This system contains measures 103 through 106. The MIDI Out track has rests in measures 103 and 104, followed by a quarter note with a sharp sign in measures 105 and 106. The Drumkit track has a steady eighth-note pattern, with a triplet of eighth notes in measure 105. The Hand Clap track has a quarter note with a triplet of eighth notes in measure 105. The guitar1 track plays a rhythmic pattern of eighth notes with various chordal structures. The solo guitar track continues its melodic line. The bass track has a quarter note with a sharp sign in measure 103 and a quarter note with a sharp sign in measure 105. The synth track features a sixteenth-note sextuplet in measure 103 and a triplet of eighth notes in measure 105. The bass 2 track has a series of chords in measure 103. The vocal track has a half note with a sharp sign in measure 103 and a quarter note with a sharp sign in measure 105.

107

Drumkit

Hand Clap

guitar1

vocal

Detailed description: This system contains measures 107, 108, and 109. The Drumkit part features a consistent rhythmic pattern of eighth notes with 'x' marks above them. The Hand Clap part has a simple melody of quarter notes. The guitar1 part plays a series of chords, with a key signature change from one sharp to one flat between measures 108 and 109. The vocal part has sparse notes, including a sharp sign in measure 108.



110

MIDI Out

Drumkit

Hand Clap

piano right

guitar1

solo guitar

bass

synth

bass 2

piano left

vocal

Detailed description: This system contains measures 110, 111, 112, and 113. MIDI Out is silent. Drumkit has a more complex pattern with a triplet in measure 113. Hand Clap has a melody with a triplet in measure 113. Piano right is silent. Guitar1 plays chords, with a key signature change to two flats between measures 111 and 112. Solo guitar, bass, synth, bass 2, and piano left are silent. The vocal part has notes in measures 111 and 112, with a key signature change to two flats.

2

MIDI Out

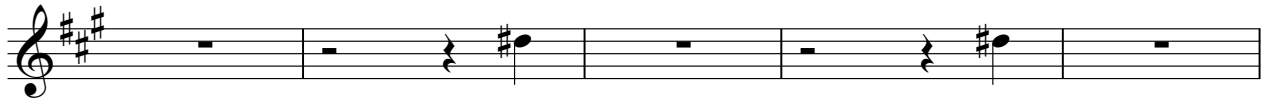
85



90



97



102



Awolnation-Sail

Drumkit

8

15

21

26

31

36

41

46

51

56

V.S.

Drumkit

This musical score for a drumkit is presented in ten systems, each with a measure number on the left. The notation is split across two staves per system. The upper staff uses 'x' marks to denote drum hits, while the lower staff uses standard musical notation with stems, beams, and accents to show the rhythmic pattern. Measure numbers are 61, 65, 70, 75, 80, 85, 89, 94, 99, and 104. The score includes various rhythmic elements such as eighth notes, quarter notes, and eighth rests, often grouped in triplets. Some measures feature a circled 'x' symbol above the upper staff, likely indicating a specific drum sound or technique. The overall structure is a continuous sequence of rhythmic patterns.

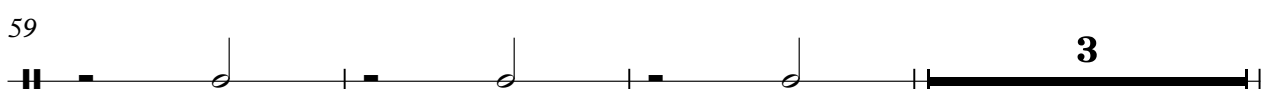
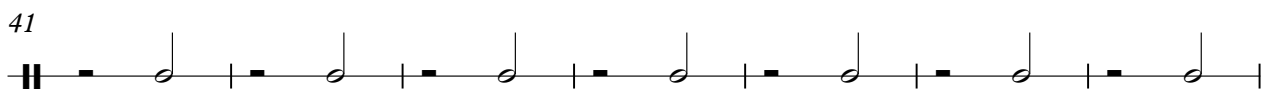
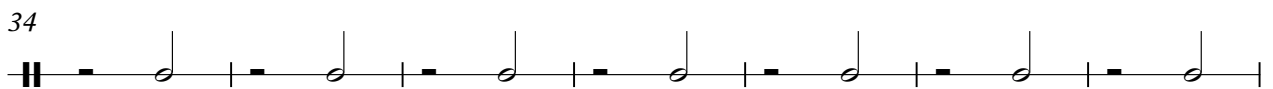
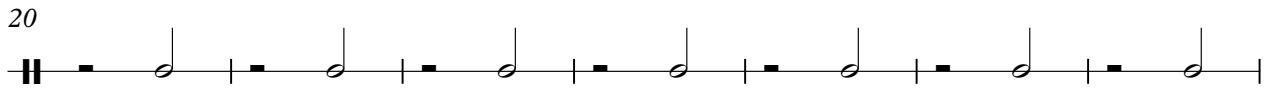
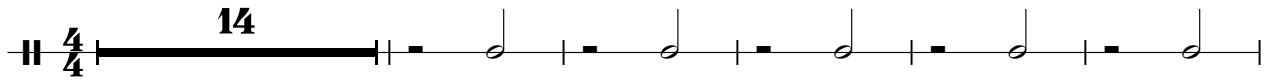
Drumkit

109

The image shows a musical score for a drumkit and guitar. The drumkit part is written on a single staff with a treble clef and a key signature of one flat. It consists of four measures of music, each with a single 'x' mark above the staff, indicating a drum hit. The guitar part is written on a standard six-string staff with a treble clef and a key signature of one flat. It consists of four measures of music. The first measure has a half note on the 2nd string, a quarter note on the 3rd string, and a quarter note on the 4th string. The second measure has a half note on the 2nd string, a quarter note on the 3rd string, and a quarter note on the 4th string. The third measure has a half note on the 2nd string, a quarter note on the 3rd string, and a quarter note on the 4th string. The fourth measure has a half note on the 2nd string, a quarter note on the 3rd string, and a quarter note on the 4th string. A triplet of eighth notes is marked with a '3' below it.

Hand Clap

Awolnation-Sail



2

Hand Clap

65



72



79



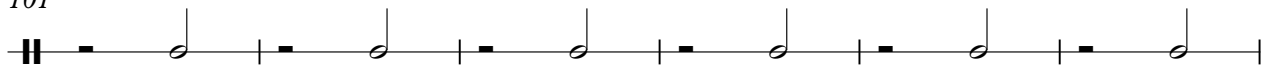
86



94



101

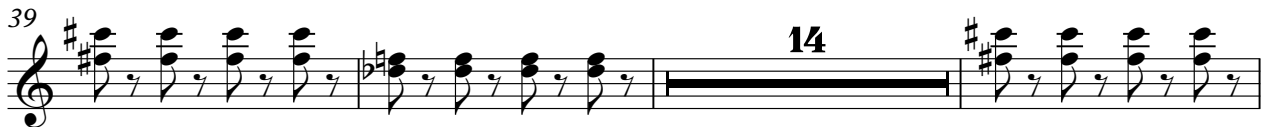


107



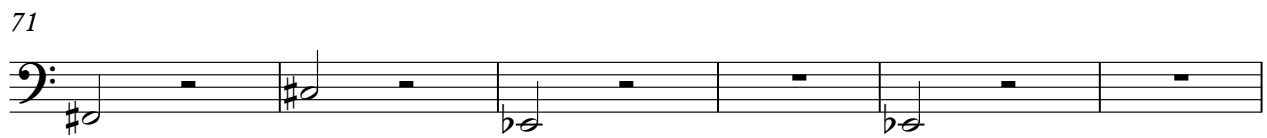
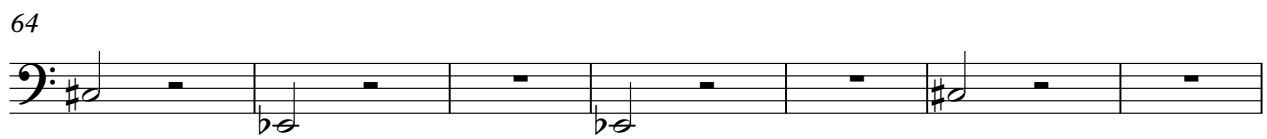
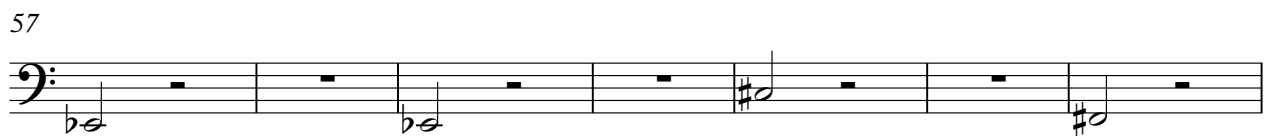
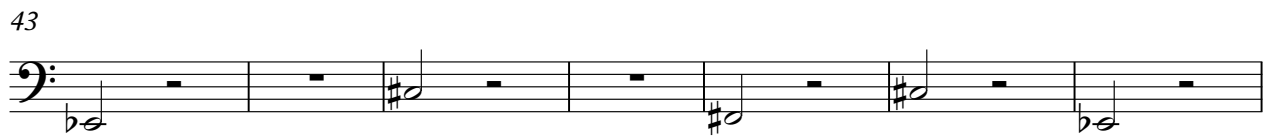
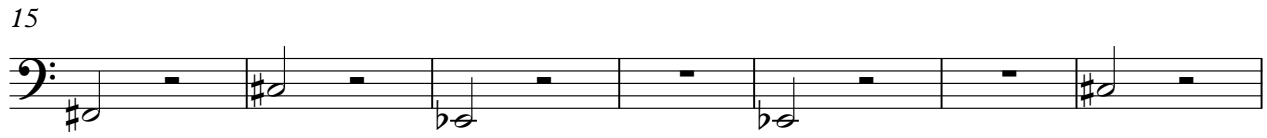
Awolnation-Sail

guitar1



Awolnation-Sail

bass



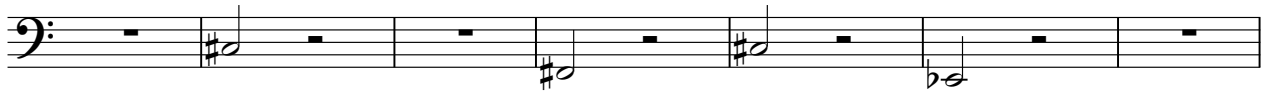
2

bass

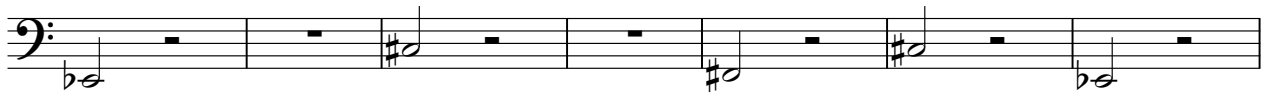
77



84



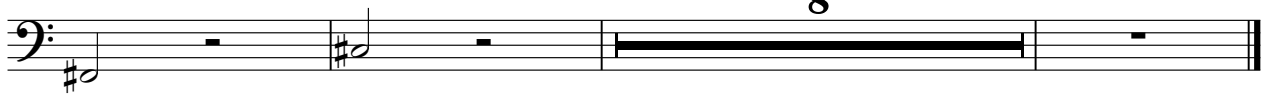
91



98



103



Awolnation-Sail

synth

The image displays a musical score for the synth part of the song "Sail" by Awolnation. The score is written in 4/4 time and consists of ten staves, each beginning with a measure number (8, 12, 16, 20, 24, 28, 32, 36, 40, 44). The key signature is one sharp (F#), and the time signature is 4/4. The notation includes various rhythmic patterns, including eighth and sixteenth notes, and rests. Brackets above the notes indicate groupings of 6 notes, and some measures feature a triplet of 3 notes. The score concludes with the text "V.S." at the bottom right.

V.S.

Musical score for a synth instrument, measures 48 to 84. The score is written in treble clef with a key signature of one flat (Bb). The music consists of a repeating melodic pattern in the right hand and a complex, multi-voiced accompaniment in the left hand. The right hand features a triplet of eighth notes (e.g., Bb4, A4, G4) followed by a sixteenth-note run. The left hand features a sixteenth-note triplet (e.g., Bb3, A3, G3) followed by a sixteenth-note run. Brackets above the notes indicate these groupings. The score is divided into systems of three measures each, with measure numbers 48, 52, 56, 60, 64, 68, 72, 76, 80, and 84 marking the beginning of each system. The key signature changes to two flats (Bb, Eb) at measure 64.

88

3 6 6

This musical staff for measure 88 begins with a treble clef and a key signature of one sharp (F#). It contains a triplet of eighth notes (B4, C5, D5) followed by a sixteenth rest. The remainder of the staff is filled with sixteenth-note chords, with two groups of six chords each indicated by a bracket and the number '6'. The notes in these chords include B4, C5, D5, E5, F#5, and G5.

92

6 6

This musical staff for measure 92 continues with the same key signature and contains two groups of sixteenth-note chords, each indicated by a bracket and the number '6'. The notes in these chords include B4, C5, D5, E5, F#5, and G5.

96

3 6 6

This musical staff for measure 96 begins with a treble clef and a key signature of one sharp (F#). It contains a triplet of eighth notes (B4, C5, D5) followed by a sixteenth rest. The remainder of the staff is filled with sixteenth-note chords, with two groups of six chords each indicated by a bracket and the number '6'. The notes in these chords include B4, C5, D5, E5, F#5, and G5.

100

6

This musical staff for measure 100 continues with the same key signature and contains a group of sixteenth-note chords indicated by a bracket and the number '6'. The notes in these chords include B4, C5, D5, E5, F#5, and G5.

103

6 3 8

This musical staff for measure 103 begins with a treble clef and a key signature of one sharp (F#). It contains a group of sixteenth-note chords indicated by a bracket and the number '6', followed by a triplet of eighth notes (B4, C5, D5) and a final eighth rest. The remainder of the staff is a whole rest, indicated by the number '8' above it.

Awolnation-Sail

bass 2

6

12

17

40

63

73

103

14

6

14

6

6

22

6

8

Awolnation-Sail

piano left

72

Musical notation for piano left hand, measures 72-75. Measure 72 is a whole rest. Measures 73-75 contain chords: Bb2, Eb3, G3, Bb3, Eb4, G4, Bb4, Eb5, G5.

76

Musical notation for piano left hand, measures 76-80. Measures 76-80 contain chords: Bb2, Eb3, G3, Bb3, Eb4, G4, Bb4, Eb5, G5.

81

Musical notation for piano left hand, measures 81-85. Measures 81-85 contain chords: Bb2, Eb3, G3, Bb3, Eb4, G4, Bb4, Eb5, G5.

86

24

Musical notation for piano left hand, measures 86-89. Measures 86-89 contain chords: Bb2, Eb3, G3, Bb3, Eb4, G4, Bb4, Eb5, G5.

