

# Guns N Roses - Back Off Bitch

♩ = 138,000198

Voice

Gtr. I

Gtr. II

Gtr. III

6

Voice

Gtr. I

Gtr. II

Gtr. III

11

Gtr. I

Gtr. II

Gtr. III

16

Voice

Gtr. I

Gtr. II

Gtr. III

19

Voice

Gtr. I

Gtr. II

Gtr. III

22

Voice

Gtr. I

Gtr. II

25 3

Voice

Gtr. I

Gtr. II

30

Voice

Gtr. I

Gtr. II

Gtr. III

34

Voice

Gtr. I

Gtr. II

Gtr. III

38

Voice

Gtr. I

Gtr. II

41

Voice

Gtr. I

Gtr. II

45

Voice

Gtr. I

Gtr. II

48

Voice

Gtr. I

Gtr. II

51

Voice

Gtr. I

Gtr. II

54

Voice

Gtr. I

Gtr. II

Gtr. III

57

Voice

Gtr. I

Gtr. II

Gtr. III

6

60

Voice

Gtr. I

Gtr. II

64

Voice

Gtr. I

Gtr. II

Gtr. III

68

Voice

Gtr. I

Gtr. II

Gtr. III

72 7

Voice

Gtr. I

Gtr. II

Gtr. III

Detailed description: This system covers measures 72 to 75. The key signature is one sharp (F#). The voice part is in bass clef. Gtr. I and Gtr. II are in treble clef. Gtr. III is in treble clef. Measure 72 has a whole rest for the voice. Measures 73-75 contain vocal lines with various note values and rests. The guitar parts feature chords and melodic lines, with Gtr. III having a long slur over measures 73-75.

76

Voice

Gtr. I

Gtr. II

Gtr. III

Detailed description: This system covers measures 76 to 79. The key signature is one sharp (F#). The voice part is in bass clef. Gtr. I and Gtr. II are in treble clef. Gtr. III is in treble clef. Measures 76-79 contain vocal lines with various note values and rests. The guitar parts feature chords and melodic lines, with Gtr. III being mostly silent in this system.

80

Voice

Gtr. I

Gtr. II

Detailed description: This system covers measures 80 to 83. The key signature is one sharp (F#). The voice part is in bass clef. Gtr. I and Gtr. II are in treble clef. Measures 80-83 contain vocal lines with various note values and rests. The guitar parts feature chords and melodic lines, with Gtr. II having a sharp sign (#) in measure 83.

8

83

Voice

Gtr. I

Gtr. II

86

Voice

Gtr. I

Gtr. II

89

Voice

Gtr. I

Gtr. II

Gtr. III



92

Voice

Gtr. I

Gtr. II

Gtr. III

95

Voice

Gtr. I

Gtr. II

99

Voice

Gtr. I

Gtr. II

Gtr. III

10

103

Voice

Gtr. I

Gtr. II

Gtr. III

108

Voice

Gtr. I

Gtr. II

Gtr. III

112

Gtr. I

Gtr. II

Gtr. III

$\text{♩} = 138, \text{♩} = 108, \text{♩} = 198$

115  $\text{♩} = 138,000198$   $\text{♩} = 138,000198$

Gtr. I  
Gtr. II  
Gtr. III

3

118

Gtr. I  
Gtr. II  
Gtr. III

121  $\text{♩} = 138,000198$   $\text{♩} = 138,000198$

Gtr. I  
Gtr. II  
Gtr. III

3 3 3

124

Gtr. I  
Gtr. II  
Gtr. III

3

127

Gtr. I

Gtr. II

Gtr. III

130

Gtr. I

Gtr. II

Gtr. III

134

Voice

Gtr. I

Gtr. II

Gtr. III

138

Voice

Gtr. I

Gtr. II

142

Voice

Gtr. I

Gtr. II

145

Voice

Gtr. I

Gtr. II

148

Voice

Gtr. I

Gtr. II

Gtr. III

14

151

Voice

Gtr. I

Gtr. II

Gtr. III

154

Voice

Gtr. I

Gtr. II

Gtr. III

157

Voice

Gtr. I

Gtr. II

Gtr. III

160 15

Voice

Gtr. I

Gtr. II

Detailed description: This system covers measures 160 to 163. The voice part (bass clef) has a whole rest in measure 160, followed by a half note G2 in measure 161, a whole rest in measure 162, and a half note G2 in measure 163. The guitar parts (treble clef) feature a rhythmic pattern of eighth notes in Gtr. I and Gtr. II, with some chords and melodic lines. The key signature has one sharp (F#).

164

Voice

Gtr. I

Gtr. II

Gtr. III

Detailed description: This system covers measures 164 to 166. The voice part (bass clef) has a whole rest in measure 164, followed by a half note G2 in measure 165, a whole rest in measure 166, and a half note G2 in measure 167. The guitar parts (treble clef) continue the rhythmic pattern, with Gtr. III entering in measure 166. The key signature has one sharp (F#).

167

Voice

Gtr. I

Gtr. II

Gtr. III

Detailed description: This system covers measures 167 to 170. The voice part (bass clef) has a half note G2 in measure 167, a whole rest in measure 168, a whole rest in measure 169, and a half note G2 in measure 170. The guitar parts (treble clef) feature a complex rhythmic pattern with many chords and melodic lines. The key signature has one sharp (F#).

16

171

Voice

Gtr. I

Gtr. II

Gtr. III

174

Voice

Gtr. I

Gtr. II

Gtr. III



# Guns N Roses - Back Off Bitch

Voice

♩ = 138,000198

5 8

18

26

31

36

41

46

52

56

60

2

66

72

77

82

88

92

96

102

108

121

Voice

3

5

12

♩ = 138,000198

♩ = 138,000198

137

Voice

3

142

146

150

154

158

163

168

173

2

# Guns N Roses - Back Off Bitch

Gtr. I

♩ = 138,000198

9

17

21

25

33

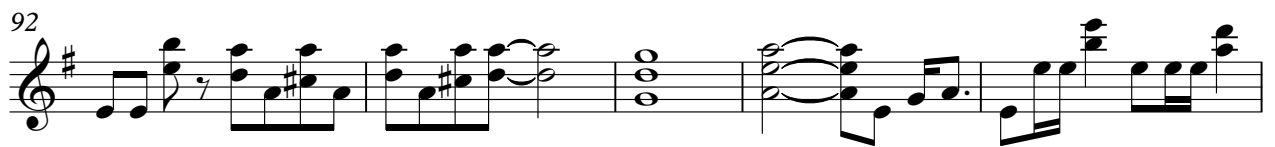
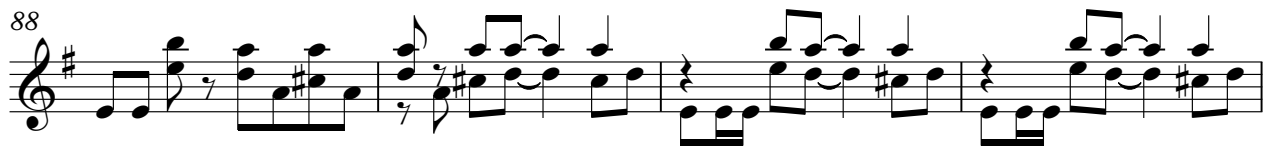
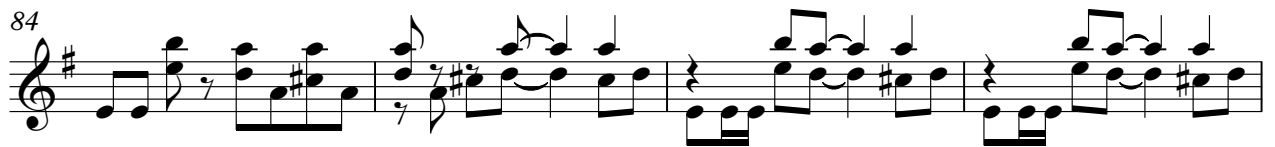
38

42

46

50

V.S.



102

110

$\text{♩} = 138,000198$   $\text{♩} = 138,000198$

116

$\text{♩} = 138,000198$

121

$\text{♩} = 138,000198$   $\text{♩} = 138,000198$

126

130

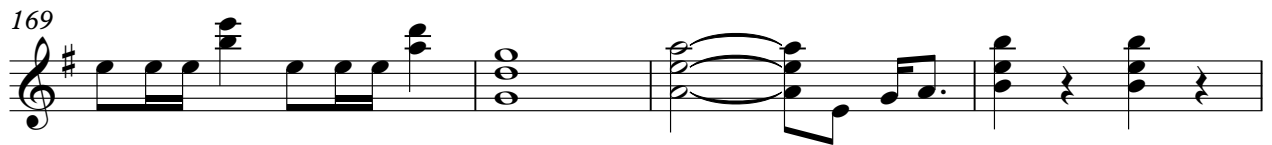
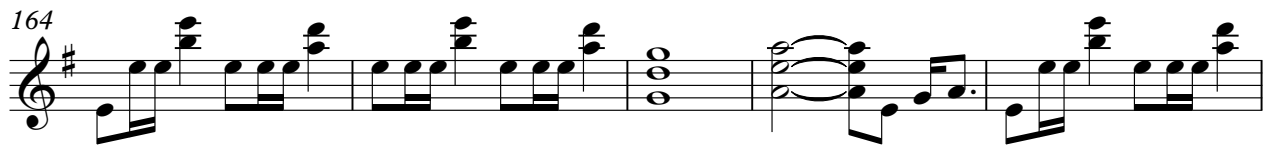
134

142

146

150

V.S.



Guns N Roses - Back Off Bitch

Gtr. II

♩ = 138,000198

9

16

21

27

34

42

47

50

54

V.S.



58

63

70

79

84

88

92

97

105

111

$\text{♩} = 138,000198$     $\text{♩} = 138,000198 = 138,000198$

Gtr. II

3

117  $\text{♩} = 138,0001$

122  $\text{♩} = 138,000198$

128

137

143

147

151

155

160

166

V.S.

4

Gtr. II

172

Musical notation for guitar part II, measures 172-175. The notation is on a single staff with a treble clef and a key signature of one sharp (F#). Measure 172 contains a quarter note chord (F#4, A4, C5) with a downward bowing stroke. Measure 173 contains a quarter note chord (F#4, A4, C5) with a downward bowing stroke. Measure 174 contains a quarter note chord (F#4, A4, C5) with a downward bowing stroke. Measure 175 contains a quarter note chord (F#4, A4, C5) with a downward bowing stroke. The notation is followed by a double bar line.

Gtr. III

Guns N Roses - Back Off Bitch

♩ = 138,000198

7

12

18

13

35

19

57

8

70

76

14

92

8

Gtr. III

Musical score for guitar, system 2, measures 102-158. The score is written in treble clef with a key signature of one sharp (F#). It features various rhythmic patterns, including eighth and sixteenth notes, and rests. Measure numbers 102, 108, 112, 116, 120, 123, 128, 150, 154, and 158 are indicated at the start of their respective staves. The score includes several triplets (marked with a '3') and a 16-measure rest (marked with '16'). A tempo marking of  $\text{♩} = 138,000198$  is present in measures 108, 112, 116, 120, and 123. The notation includes various accidentals (sharps and naturals) and articulation marks like slurs and accents.

171  Gtr. III 3

174 