

Harry Chapin - Taxi

♩ = 120,000000
princess

Clarinet in Bb

melody

Trombone

baby's high

Alto

2nd line

Electric Piano

♩ = 120,000000
bass

Contrabass

4

Tbn.

E. Piano

7

Tbn.

E. Piano

10

Tbn.

E. Piano

Cb.

14

Tbn.

E. Piano

Cb.

17

Tbn.

E. Piano

Cb.

21

Tbn. 

E. Piano 

Cb. 

25

Tbn. 

E. Piano 

Cb. 

29

Tbn. 

E. Piano 

Cb. 

33

Tbn.

E. Piano

Cb.

37

Tbn.

E. Piano

Cb.

41

Tbn.

E. Piano

Cb.

45

Tbn.

E. Piano

Cb.

49

Tbn.

E. Piano

Cb.

53

Tbn.

E. Piano

Cb.

56

Tbn.

E. Piano

Cb.

60

Tbn.

E. Piano

Cb.

60

61

62

63

64

Tbn.

E. Piano

Cb.

64

65

66

67

68

Tbn.

E. Piano

Cb.

68

69

70

71

72

Tbn.

E. Piano

Cb.

72

73

74

75

76

Tbn.

E. Piano

Cb.

79

E. Piano

Cb.

82

Cl.

E. Piano

Cb.

86

Cl.

E. Piano

Cb.

90

Cl.

E. Piano

Cb.

94

Cl.

E. Piano

Cb.

98

Cl.

E. Piano

Cb.

103

E. Piano

Cb.

108

A.

E. Piano

Cb.

This system contains three staves. The top staff, labeled 'A.', is in treble clef and contains five measures of music. The first two measures are whole rests. The third measure has a half note G4, the fourth has a half note A4, and the fifth has a half note B4. The middle staff, labeled 'E. Piano', is a grand staff with treble and bass clefs, containing five measures of chords. The bottom staff, labeled 'Cb.', is in bass clef and contains five measures of music. The first four measures have a dotted quarter note G2, and the fifth measure has a dotted quarter note A2.

113

A.

E. Piano

Cb.

This system contains three staves. The top staff, labeled 'A.', is in treble clef and contains five measures. The first measure has a quarter note G4, the second a quarter note A4, the third a half note B4, and the fourth and fifth measures have a whole note C5. The middle staff, labeled 'E. Piano', is a grand staff with treble and bass clefs, containing five measures of chords. The bottom staff, labeled 'Cb.', is in bass clef and contains five measures of music. The first measure has a quarter note G2, the second a quarter note A2, the third a quarter note B2, and the fourth and fifth measures have a quarter note C3.

117

A.

E. Piano

Cb.

This system contains three staves. The top staff, labeled 'A.', is in treble clef and contains five measures. The first measure has a whole note G4, the second a whole note A4, the third a whole note B4, and the fourth and fifth measures have a whole note C5. The middle staff, labeled 'E. Piano', is a grand staff with treble and bass clefs, containing five measures. The first measure has a quarter note G4, the second a quarter note A4, the third a quarter note B4, and the fourth and fifth measures have a quarter note C5. The bottom staff, labeled 'Cb.', is in bass clef and contains five measures of music. The first measure has a quarter note G2, the second a quarter note A2, the third a quarter note B2, and the fourth and fifth measures have a quarter note C3.

121

A.

E. Piano

Cb.

126 ♩ = 60,000000 ♩ = 120,000000

Tbn.

E. Piano

Cb.

130

Tbn.

E. Piano

Cb.

133

Tbn.

E. Piano

Cb.

136

Tbn.

E. Piano

Cb.

140

Tbn.

E. Piano

Cb.

144

Tbn.

E. Piano

Cb.

148

Tbn.

E. Piano

Cb.

152

Tbn.

E. Piano

Cb.

This system covers measures 152 to 156. The Tbn. part starts with four measures of rests, then plays a melodic phrase in the final measure. The E. Piano part provides a consistent block chord accompaniment throughout. The Cb. part has a melodic line with a half note rest in measure 154.

157

Tbn.

E. Piano

Cb.

This system covers measures 157 to 160. The Tbn. part has a melodic line with eighth notes. The E. Piano part continues with the block chord accompaniment. The Cb. part has a melodic line with eighth notes.

161

Tbn.

E. Piano

Cb.

This system covers measures 161 to 164. The Tbn. part has a melodic line with a long slur. The E. Piano part continues with the block chord accompaniment. The Cb. part has a melodic line with a long slur.

165

Tbn.

E. Piano

Cb.

This system covers measures 165 to 168. The Tbn. part has a melodic line with eighth notes. The E. Piano part continues with the block chord accompaniment. The Cb. part has a melodic line with eighth notes.

169

Tbn.

E. Piano

Cb.

173

Tbn.

E. Piano

Cb.

177

Tbn.

E. Piano

Cb.

181

Tbn.

E. Piano

Cb.

185

Tbn.

E. Piano

Cb.

Detailed description: This system contains measures 185, 186, and 187. The Tbn. part starts with a whole note chord in measure 185, followed by a melodic line in measure 186 that is slurred into measure 187. The E. Piano part features chords in the left hand and a melodic line in the right hand. The Cb. part has a melodic line with a slur over measures 186 and 187.

188

Tbn.

E. Piano

Cb.

Detailed description: This system contains measures 188, 189, and 190. The Tbn. part has a melodic line starting in measure 188 and slurred through measure 190. The E. Piano part has a melodic line in the right hand and a bass line in the left hand, both slurred across the three measures. The Cb. part has a melodic line starting in measure 188 and slurred through measure 190.

Clarinet in B \flat

Harry Chapin - Taxi

$\text{♩} = 120,000000$
princess

22 31

57

25

86

92

97

102

$\text{♩} = 60,000000$ $\text{♩} = 120,000000$

23 64

Trombone

Harry Chapin - Taxi

♩ = 120,000000
melody 2

7

13

18

24

30

35

40

45

50

2

Trombone

59

3

64

69

74

12

90

9 26

$\text{♩} = 60,000000$ $\text{♩} = 120,000000$

128

133

138

143

2

149

2

Trombone

155

Measures 155-159 of the Trombone part. The staff is in bass clef. Measure 155 starts with a whole rest. Measures 156-159 contain eighth and sixteenth notes with various articulations and slurs.

160

Measures 160-165 of the Trombone part. Measure 160 begins with a sixteenth-note triplet. Measures 161-165 feature eighth and sixteenth notes with slurs and a fermata over a half note in measure 164.

166

Measures 166-170 of the Trombone part. Measures 166-170 consist of eighth and sixteenth notes with slurs and a fermata over a half note in measure 169.

171

Measures 171-175 of the Trombone part. Measures 171-175 contain eighth and sixteenth notes with slurs and a fermata over a half note in measure 174.

176

Measures 176-180 of the Trombone part. Measures 176-180 feature eighth and sixteenth notes with slurs and a fermata over a half note in measure 179.

181

Measures 181-184 of the Trombone part. Measure 181 starts with a sixteenth-note triplet. Measures 181-184 contain eighth and sixteenth notes with slurs and a fermata over a half note in measure 183.

185

Measures 185-189 of the Trombone part. Measures 185-189 consist of eighth and sixteenth notes with slurs and a fermata over a half note in measure 188.

Alto

Harry Chapin - Taxi

♩ = 120,000000
baby's high

22 31

57

31 9

100

10

115

122

♩ = 60,000000 20,000000

64

Electric Piano

Harry Chapin - Taxi

♩ = 120,000000
2nd line

5

9

13

17

22

27

V.S.

77

81

86

91

97

103

109

V.S.

115

120

126 ♩ = 60,000000 ♩ = 120,000000

130

134

139

145

150

156



162



168



174



180



186



Harry Chapin - Taxi

Contrabass

♩ = 120,000000
bass

9

15

21

27

32

37

42

48

54

60

V.S.

65



70



76



82



87



92



97



102



108



113

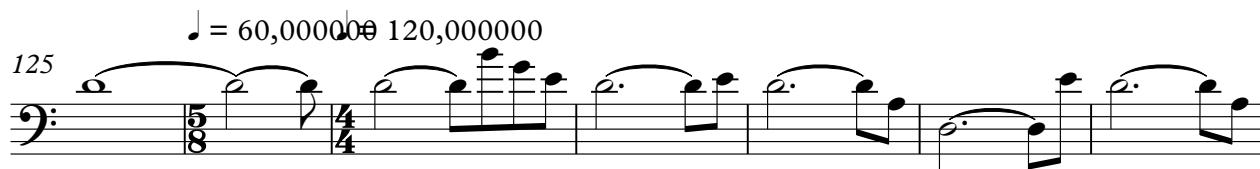


119



125

$\text{♩} = 60,000000 \text{ } 120,000000$



132



138



143



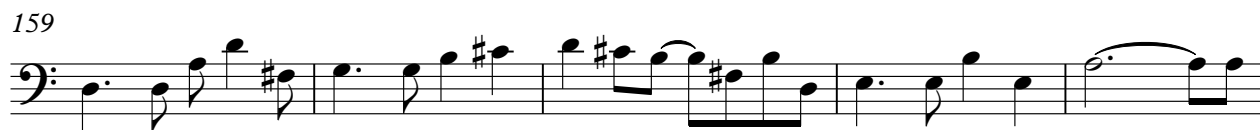
148



153



159



164



169



V.S.

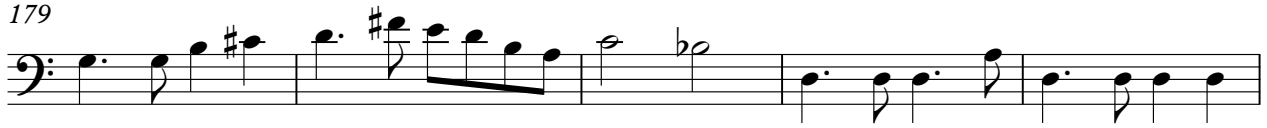
4

Contrabass

174



179



184

