

Track 0

cantus

altus

tenor

bass

4

cantus

altus

tenor

bass

6

cantus

altus

tenor

bass

8

cantus

altus

tenor

bass

This system contains measures 8 and 9. The cantus part begins with a treble clef, a key signature of two flats (B-flat and E-flat), and a common time signature. It features a melodic line with a dotted quarter note, an eighth note, and a half note in the first measure, followed by a half note and a quarter note in the second measure. The altus part follows a similar rhythmic pattern with a different pitch contour. The tenor part consists of a series of quarter notes, some beamed together. The bass part is a simple accompaniment of quarter notes.

10

cantus

altus

tenor

bass

This system contains measures 10 and 11. The cantus part continues with a melodic line of quarter notes. The altus part has a similar melodic line. The tenor part features a series of quarter notes, some beamed together. The bass part continues with a simple accompaniment of quarter notes.

12

cantus

altus

tenor

bass

This system contains measures 12 and 13. The cantus part has a melodic line of quarter notes. The altus part has a similar melodic line. The tenor part features a series of quarter notes, some beamed together. The bass part continues with a simple accompaniment of quarter notes.

Track 0

cantus



Track 0

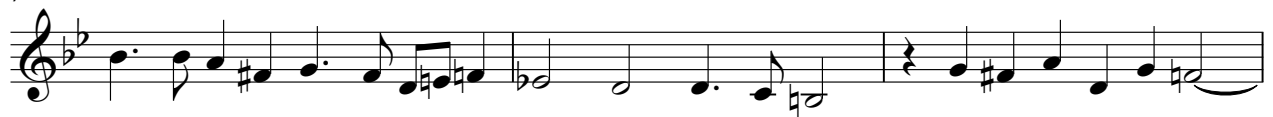
altus



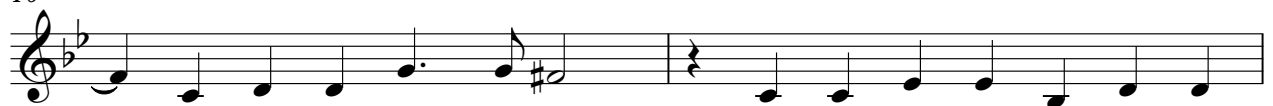
4



7



10

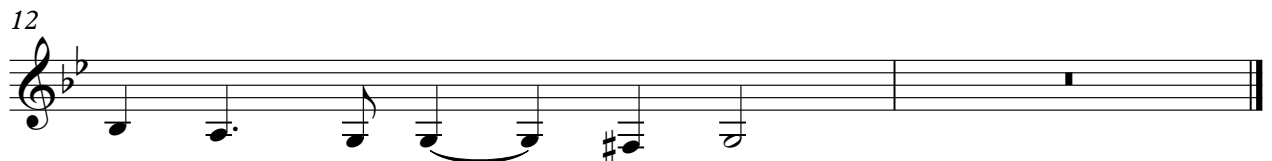
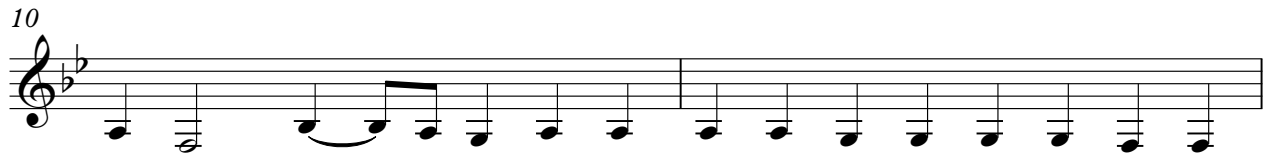
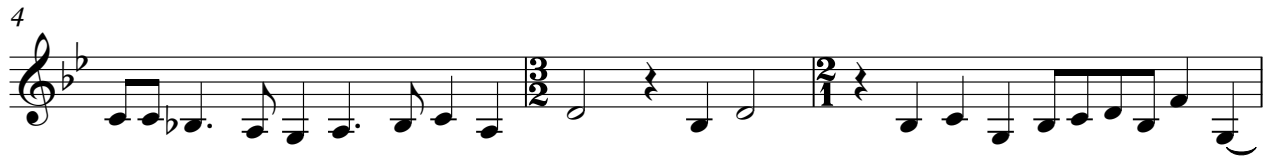


12



Track 0

tenor



Track 0

bass

