

# Praetorius\_Michael-Huic\_oportet

♩ = 160,000000

Cor Anglais

Clarinet in Bb

Horn in F

Baroque Trumpet

Baroque Trumpet

Tuba

This system contains six staves. The top staff is for Cor Anglais, the second for Clarinet in Bb, the third for Horn in F, the fourth and fifth for Baroque Trumpet, and the sixth for Tuba. The music is in 4/4 time. The Clarinet in Bb and Tuba parts feature triplets. The Baroque Trumpet parts have rests in the first two measures.



5

C. A.

Cl.

Bsn.

Hn.

Bar. Tpt.

Bar. Tpt.

Tbn.

Tba.

This system contains eight staves. The top three staves are for C. A., Cl., and Bsn. The next three are for Hn., Bar. Tpt., and Bar. Tpt. The bottom two are for Tbn. and Tba. The music continues from the first system. The Baroque Trumpet parts now have notes. The Tuba part has a triplet in the final measure.



13

C. A.

Cl.

Bsn.

Hn.

Bar. Tpt.

Bar. Tpt.

Tbn.

Tba.

Detailed description: This is a page of a musical score for a brass ensemble, page 3, starting at measure 13. The score is in 4/2 time. It features seven staves: C. A. (Cornet A), Cl. (Clarinet), Bsn. (Bassoon), Hn. (Horn), Bar. Tpt. (Baritone Trumpet), Tbn. (Trombone), and Tba. (Tuba). The C. A. staff begins with a treble clef and a key signature of one flat. The Cl. staff begins with a treble clef and a key signature of one flat. The Bsn. staff begins with a bass clef and a key signature of one flat. The Hn. staff begins with a treble clef and a key signature of one flat. The Bar. Tpt. staff begins with a treble clef and a key signature of one flat. The Tbn. staff begins with a bass clef and a key signature of one flat. The Tba. staff begins with a bass clef and a key signature of one flat. The score consists of two measures. In measure 13, the C. A. staff has a quarter note G4, a quarter note A4, a quarter note Bb4, a quarter note C5, a quarter note Bb4, and a quarter note A4. The Cl. staff has a whole rest. The Bsn. staff has a whole rest. The Hn. staff has a whole rest. The Bar. Tpt. staff has a quarter note G3, a quarter note A3, a quarter note Bb3, a quarter note C4, a quarter note Bb3, and a quarter note A3. The Bar. Tpt. staff has a quarter note G3, a quarter note A3, a quarter note Bb3, a quarter note C4, a quarter note Bb3, and a quarter note A3. The Tbn. staff has a whole rest. The Tba. staff has a quarter note G2, a quarter note A2, a quarter note Bb2, a quarter note C3, a quarter note Bb2, and a quarter note A2. In measure 14, the C. A. staff has a quarter rest, a quarter note G4, a quarter note A4, and a quarter note Bb4. The Cl. staff has a quarter rest, a quarter note G3, a quarter note A3, a quarter note Bb3, a quarter note C4, a quarter note Bb3, and a quarter note A3. The Bsn. staff has a quarter rest, a quarter note G3, and a quarter note A3. The Hn. staff has a quarter rest, a quarter note G3, a quarter note A3, a quarter note Bb3, a quarter note C4, a quarter note Bb3, and a quarter note A3. The Bar. Tpt. staff has a whole rest. The Bar. Tpt. staff has a quarter note G3, a quarter note A3, a quarter note Bb3, a quarter note C4, a quarter note Bb3, and a quarter note A3. The Tbn. staff has a quarter rest, a quarter note G3, a quarter note A3, a quarter note Bb3, a quarter note C4, a quarter note Bb3, and a quarter note A3. The Tba. staff has a quarter note G2, a quarter note A2, a quarter note Bb2, a quarter note C3, a quarter note Bb2, and a quarter note A2.

15

C. A.

Cl.

Bsn.

Hn.

Bar. Tpt.

Bar. Tpt.

Tbn.

Tba.

Detailed description: This is a page of a musical score for a brass ensemble, starting at measure 15. The score is divided into two systems. The first system contains staves for C. A. (Cornet A), Cl. (Clarinet), and Bsn. (Bassoon). The second system contains staves for Hn. (Horn), two Bar. Tpt. (Baritone Trumpet) parts, Tbn. (Trombone), and Tba. (Tuba). The C. A. part features a melodic line with a sharp key signature and a 2/4 time signature. The Cl. part provides harmonic support with a similar melodic line. The Bsn. part has a more active, eighth-note pattern. The Hn. part plays a rhythmic pattern of eighth notes. The two Bar. Tpt. parts have different rhythmic patterns, one with eighth notes and one with quarter notes. The Tbn. part plays a simple harmonic line, and the Tba. part plays a bass line with quarter notes.

17

C. A.

Cl.

Bsn.

Hn.

Bar. Tpt.

Bar. Tpt.

Tbn.

Tba.

Detailed description: This is a page of a musical score, page 5, starting at measure 17. The score is arranged in a system with seven staves. The instruments are: C. A. (Cornet A), Cl. (Clarinet), Bsn. (Bassoon), Hn. (Horn), Bar. Tpt. (Baritone Trumpet), Tbn. (Trombone), and Tba. (Tuba). The C. A., Cl., and Bsn. staves are in the top system, while the Hn., Bar. Tpt., Tbn., and Tba. staves are in the bottom system. The C. A. staff begins with a treble clef and a key signature of one sharp (F#). The Cl. and Bsn. staves also begin with a treble clef and a key signature of one sharp. The Hn. staff begins with a treble clef and a key signature of one sharp. The Bar. Tpt. staves begin with a treble clef and a key signature of one sharp. The Tbn. and Tba. staves begin with a bass clef and a key signature of one sharp. The music consists of several measures, with some measures containing rests for certain instruments. The notation includes various note values, rests, and phrasing slurs.

20

C. A.  
Cl.  
Bsn.  
Hn.  
Bar. Tpt.  
Bar. Tpt.  
Tbn.  
Tba.

This musical score covers measures 20 through 23. The instruments are C. A., Cl., Bsn., Hn., Bar. Tpt., Bar. Tpt., Tbn., and Tba. The time signature is 4/4. Measures 20 and 21 feature a sustained note in the woodwinds. Measures 22 and 23 show more active melodic lines, including triplets in the Bar. Tpt. parts.



24

Cl.  
Hn.  
Bar. Tpt.  
Bar. Tpt.  
Tbn.  
Tba.

This musical score covers measures 24 through 27. The instruments are Cl., Hn., Bar. Tpt., Bar. Tpt., Tbn., and Tba. The time signature is 4/4. Measures 24 and 25 are mostly rests. Measures 26 and 27 feature active melodic lines with triplets in the Bar. Tpt. and Tba. parts.

28

C. A.

Cl.

Bsn.

Hn.

Bar. Tpt.

Bar. Tpt.

Tbn.

Tba.

Detailed description: This is a page of a musical score, page 7, starting at measure 28. The score is for a woodwind and brass ensemble. It features seven staves: C. A. (Cornet A), Cl. (Clarinet), Bsn. (Bassoon), Hn. (Horn), Bar. Tpt. (Baritone Trumpet), Tbn. (Trombone), and Tba. (Tuba). The music is in 4/2 time. Measures 28-30 contain triplets of eighth notes in the C. A., Cl., and Tbn. parts. Measure 31 is a changeover to 4/2 time, indicated by a double bar line and a new time signature. The C. A. part has a sharp sign above the first note in measure 31. The Cl. part has a slur over the last two notes of measure 31. The Bsn. part has a whole note in measure 31. The Hn. part has a whole note in measure 31. The Bar. Tpt. part has a whole note in measure 31. The Tbn. part has a whole note in measure 31. The Tba. part has a whole note in measure 31. The score continues with various rhythmic patterns and slurs across the remaining measures on the page.

32

C. A.

Cl.

Bsn.

Hn.

Bar. Tpt.

Bar. Tpt.

Tbn.

Tba.

Detailed description: This is a page of a musical score, page 8, starting at measure 32. It features six staves for different instruments: C. A. (Cornet A), Cl. (Clarinet), Bsn. (Bassoon), Hn. (Horn), Bar. Tpt. (Baritone Trumpet), and Tbn. (Trombone). The C. A. staff uses a treble clef and contains a melodic line with eighth and quarter notes. The Cl. staff uses a treble clef and contains a melodic line with quarter and eighth notes. The Bsn. staff uses a bass clef and contains a simple harmonic line. The Hn. staff uses a treble clef and contains a melodic line with quarter and eighth notes. The Bar. Tpt. staff uses a treble clef and contains a melodic line with quarter and eighth notes. The Tbn. staff uses a bass clef and contains a melodic line with quarter and eighth notes. The Tba. staff uses a bass clef and contains a melodic line with quarter and eighth notes. The score is divided into two measures, 32 and 33, by a vertical bar line.



34

C. A.

Cl.

Bsn.

Hn.

Bar. Tpt.

Bar. Tpt.

Tbn.

Tba.

Detailed description: This is a page of a musical score for a brass and woodwind ensemble. The page is numbered 34 at the top left and 9 at the top right. It contains seven staves, each for a different instrument: C. A. (Cornet A), Cl. (Clarinet), Bsn. (Bassoon), Hn. (Horn), Bar. Tpt. (Baritone Trumpet), Tbn. (Trombone), and Tba. (Tuba). The C. A. staff is in treble clef and contains a melodic line with eighth and quarter notes, some with accidentals. The Cl. staff is in treble clef and features a melodic line with slurs. The Bsn. staff is in bass clef and has a melodic line with slurs. The Hn. staff is in treble clef and shows a melodic line with many beamed notes. The Bar. Tpt. staff is in treble clef and contains a melodic line with slurs. The Tbn. staff is in bass clef and has a melodic line with slurs. The Tba. staff is in bass clef and features a melodic line with slurs. The score is divided into four measures by vertical bar lines.

# Cor Anglais Praetorius\_Michael-Huic\_oportet

Cor Anglais

♩ = 160,000000

2

3

3

8

3

3

3

13

16

19

5

28

3

3

3

33

35

# Praetorius\_Michael-Huic\_oportet

Clarinet in B $\flat$

$\text{♩} = 160,000000$

8

14

17

21

29

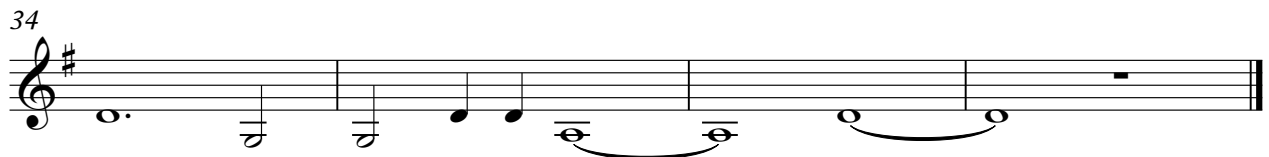
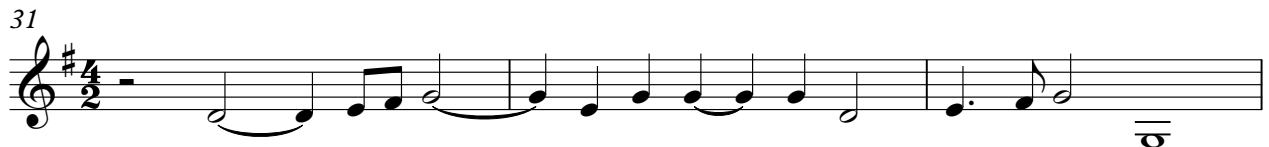
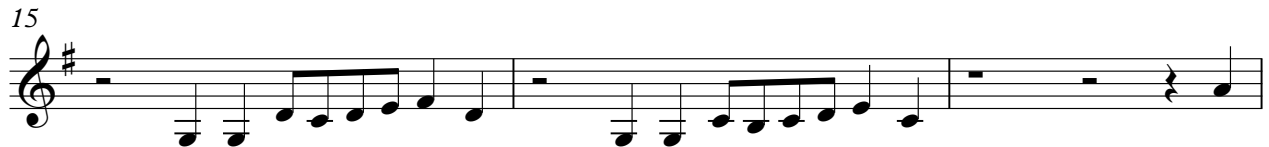
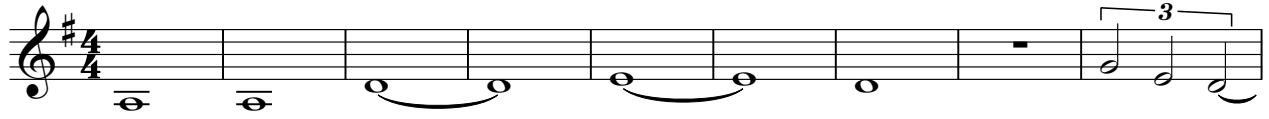
33

35



Horn in F Praetorius\_Michael-Huic\_oportet

♩ = 160,000000



# Praetorius\_Michael-Huic\_oportet

Baroque Trumpet

♩ = 160,000000

3

3

6

3

3

3

9

3

3

15

18

3

23

3

3

3

3

3

29

2

34

# Praetorius\_Michael-Huic\_oportet

Baroque Trumpet

♩ = 160,000000

7

13

16

20

26

32

35

# Trombone Praetorius\_Michael-Huic\_oportet

♩ = 160,000000

7

7

12

12

16

16

19

19

4

27

27

32

32

35

35



Tuba

# Praetorius\_Michael-Huic\_oportet

♩ = 160,000000