

# control track

$\text{♩} = 60,000000$

upper  
lower

6  
upper  
lower

11  
upper  
lower

16  
upper  
lower

21  
upper  
lower

26

upper

lower

31

upper

lower

36

upper

lower

41

upper

lower

46

upper

lower

50

upper

lower

54

upper

The upper staff contains measures 54 through 57. Measure 54 features a sequence of eighth-note chords: G4-B4-D5, A4-C5-E5, B4-D5-G5, and C5-E5-A5. Measure 55 has a single G4 note followed by two rests. Measure 56 has a G4 note followed by two rests. Measure 57 has a G4 note followed by two rests. A bass clef is positioned below the staff in measure 57.

lower

The lower staff contains measures 54 through 57. Measure 54 has a G4 note followed by a descending eighth-note scale: F4, E4, D4, C4, B3, A3, G3. Measure 55 has a G4 note followed by two rests. Measure 56 has a G4 note followed by two rests. Measure 57 has a G4 note followed by two rests. A bass clef is positioned below the staff in measure 57.

# control track

upper

$\text{♩} = 60,000000$

6

11

16

21

26

31

36

41

46

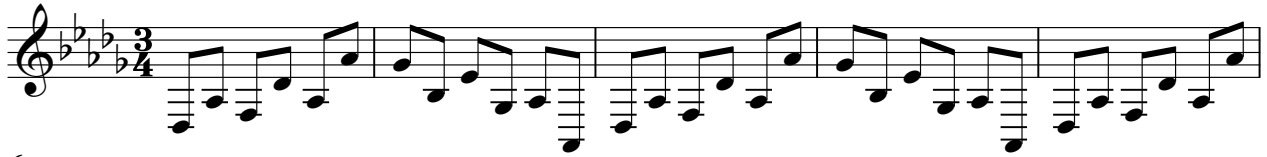
V.S.



# control track

lower

♩ = 60,000000



V.S.

2

lower

51

A musical staff in treble clef with a key signature of three flats (B-flat, E-flat, A-flat). The staff contains measures 51, 52, and 53. Measure 51 consists of a quarter note G4, a quarter note F4, and a quarter note E4. Measure 52 consists of a quarter note D4, a quarter note C4, and a quarter note B3. Measure 53 consists of a quarter note A3, a quarter note G3, and a quarter note F3. The notes are written as eighth notes with stems pointing down.

54

A musical staff in treble clef with a key signature of three flats (B-flat, E-flat, A-flat). The staff contains measures 54, 55, and 56. Measure 54 consists of a quarter note G4, a quarter note F4, and a quarter note E4. Measure 55 consists of a quarter note D4, a quarter note C4, and a quarter note B3. Measure 56 consists of a quarter note A3, a quarter note G3, and a quarter note F3. The notes are written as eighth notes with stems pointing down.