

Rancid-Blood_Clot

♩ = 150,000000

Percussion

Electric Guitar

Electric Bass

4

Perc.

E. Gtr.

E. Bass

7

Perc.

E. Gtr.

E. Bass

10

Perc.

E. Gtr.

E. Bass

13

Perc.

E. Gtr.

E. Bass

16

Perc.

E. Gtr.

E. Bass

19

Perc.

E. Gtr.

E. Bass

22

Perc.

E. Gtr.

E. Bass

25

Perc.

E. Gtr.

E. Bass

29

Perc.

E. Gtr.

E. Bass

33

Perc.

E. Gtr.

E. Bass

36

Perc.

E. Gtr.

E. Bass

Measures 36-38. Percussion features a complex rhythmic pattern with accents. Electric guitar plays a melodic line with a key signature change to B-flat. Electric bass provides a steady eighth-note accompaniment.

39

Perc.

E. Gtr.

E. Bass

Measures 39-41. Percussion has a consistent eighth-note pattern. Electric guitar continues its melodic line. Electric bass continues its eighth-note accompaniment.

42

Perc.

E. Gtr.

E. Bass

Measures 42-44. Percussion has a consistent eighth-note pattern. Electric guitar continues its melodic line. Electric bass continues its eighth-note accompaniment.

45

Perc.

E. Gtr.

E. Bass

Measures 45-47. Percussion has a consistent eighth-note pattern. Electric guitar continues its melodic line. Electric bass continues its eighth-note accompaniment.

48

Perc.

E. Gtr.

E. Bass

51

Perc.

E. Gtr.

E. Bass

54

Perc.

E. Gtr.

E. Bass

58

Perc.

E. Gtr.

E. Bass

62

Perc. 

E. Gtr. 

E. Bass 

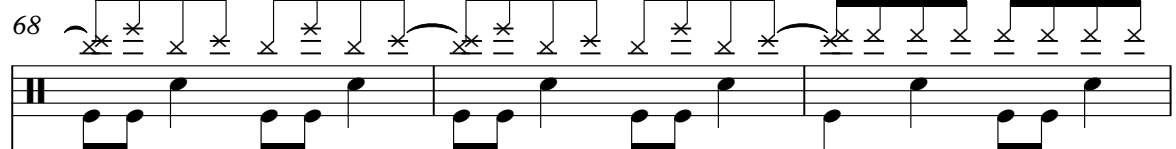
65


Perc. 


E. Gtr. 

E. Bass 

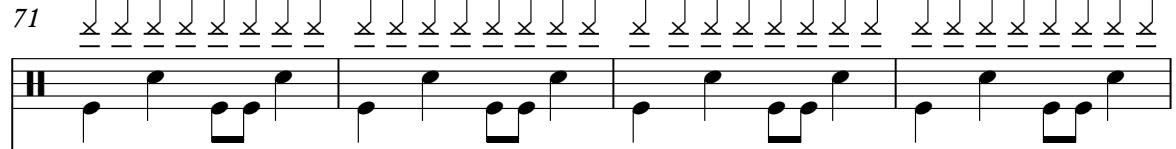
68


Perc. 

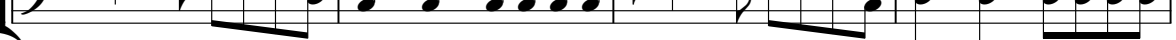
E. Gtr. 

E. Bass 

71

Perc. 

E. Gtr. 

E. Bass 

75

Perc.

E. Gtr.

E. Bass

Detailed description: This system covers measures 75 to 78. The Percussion part (top staff) features a rhythmic pattern of eighth notes with 'x' marks above them, indicating a specific sound or technique. The Electric Guitar (middle staves) plays a series of chords and single notes, with some measures containing rests. The Electric Bass (bottom staff) provides a steady eighth-note accompaniment.

79

E. Bass

Detailed description: This system covers measures 79 to 82. The Electric Bass part is shown in two staves (treble and bass clefs). It features a complex melodic line with various intervals and accidentals, including a prominent tritone interval.

83

Perc.

E. Bass

Detailed description: This system covers measures 83 to 85. The Percussion part (top staff) has a more active role with eighth-note patterns. The Electric Bass part (bottom staff) continues with a melodic line similar to the previous system, featuring a mix of eighth and quarter notes.

86

Perc.

E. Bass

Detailed description: This system covers measures 86 to 89. The Percussion part (top staff) features a complex rhythmic pattern with eighth notes and rests. The Electric Bass part (bottom staff) continues with a melodic line, showing a variety of intervals and accidentals.

89

Perc.

E. Gtr.

E. Bass

Detailed description: This system covers measures 89, 90, and 91. The percussion part features a complex, syncopated rhythm with accents on the first and third beats of each measure. The electric guitar part has a melodic line with slurs and bends, particularly in measure 90. The electric bass part provides a steady eighth-note accompaniment.

92

Perc.

E. Gtr.

E. Bass

Detailed description: This system covers measures 92, 93, and 94. The percussion part continues with its complex, syncopated rhythm. The electric guitar part has a melodic line with slurs and bends. The electric bass part provides a steady eighth-note accompaniment.

95

Perc.

E. Gtr.

E. Bass

Detailed description: This system covers measures 95, 96, and 97. The percussion part continues with its complex, syncopated rhythm. The electric guitar part has a melodic line with slurs and bends. The electric bass part provides a steady eighth-note accompaniment.

98

Perc. 

E. Gtr. 

E. Bass 

101

Perc. 

E. Gtr. 

E. Bass 

104

Perc. 

E. Gtr. 

E. Bass 

106

Perc. 

E. Gtr. 

E. Bass 

Rancid-Blood_Clot

Percussion

♩ = 150,000000

5

9

13

17

21

25

29

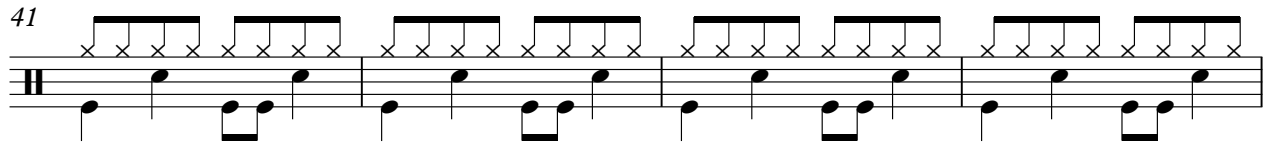
33

37

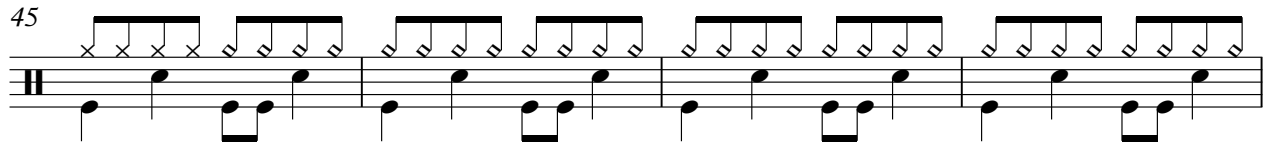
V.S.

Percussion

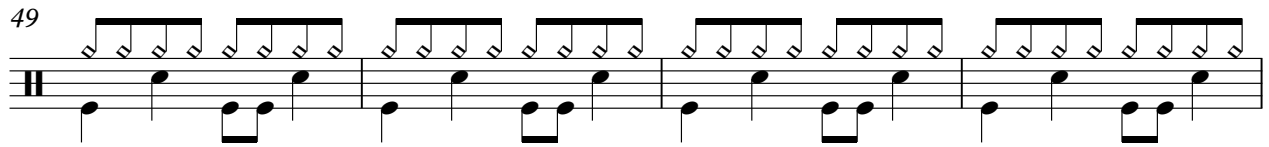
41



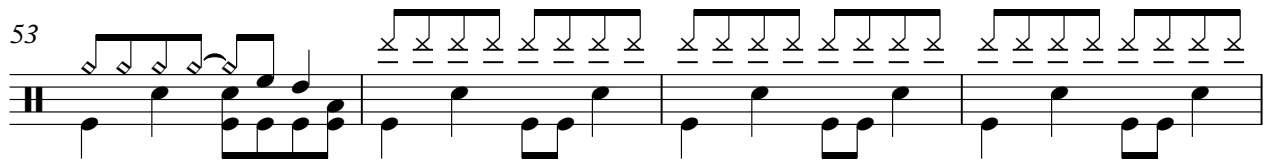
45



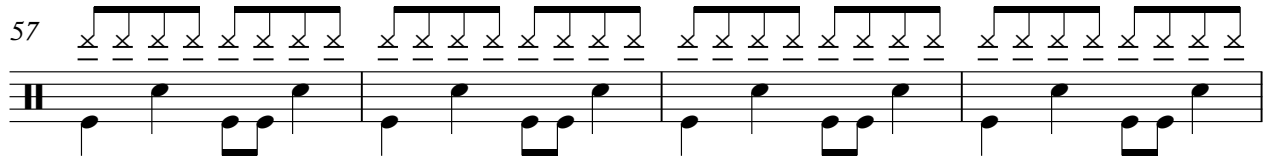
49



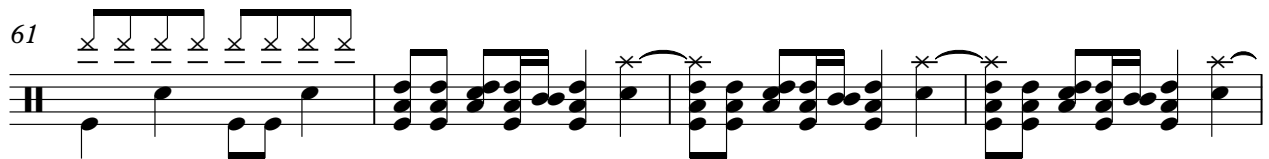
53



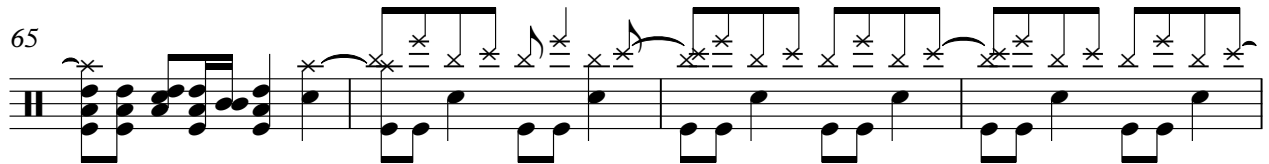
57



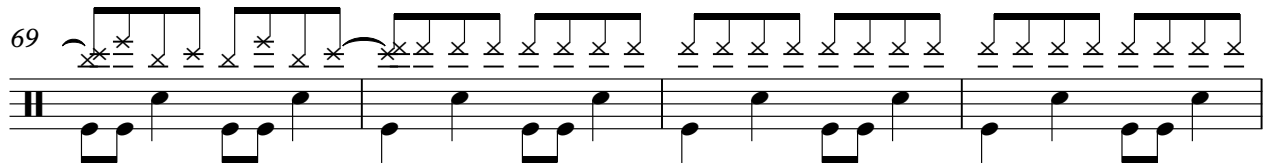
61



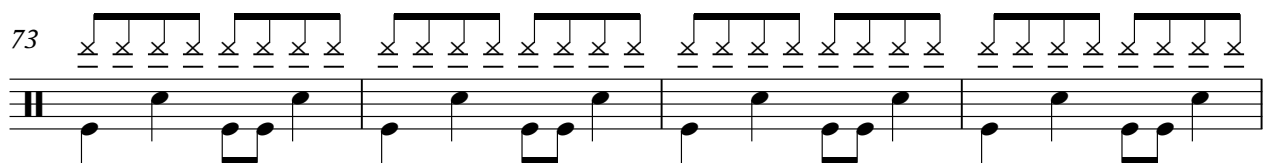
65




69



73



77



Percussion

87

Musical notation for measure 87, featuring a double bar line on the left and a series of chords and notes with various articulations like accents and slurs.

92

Musical notation for measure 92, featuring a double bar line on the left and a series of chords and notes with various articulations like accents and slurs.

96

Musical notation for measure 96, featuring a double bar line on the left and a series of chords and notes with various articulations like accents and slurs.

100

Musical notation for measure 100, featuring a double bar line on the left and a series of chords and notes with various articulations like accents and slurs.

104

Musical notation for measure 104, featuring a double bar line on the left and a series of chords and notes with various articulations like accents and slurs.

106

Musical notation for measure 106, featuring a double bar line on the left and a series of chords and notes with various articulations like accents and slurs.

Rancid-Blood_Clot

♩ = 150,000000

5

9

13

17

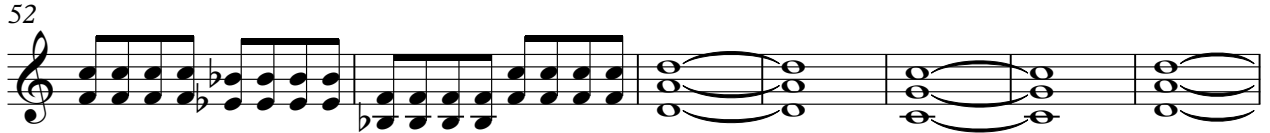
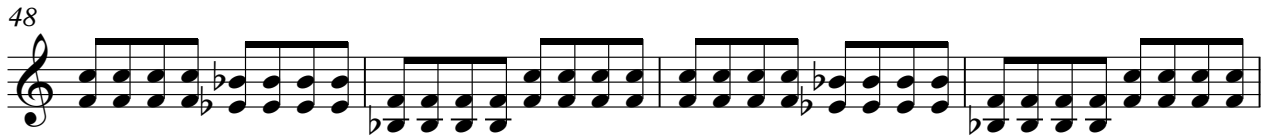
21

25

32

36

40



102



105



Rancid-Blood_Clot

♩ = 150,000000

77



81

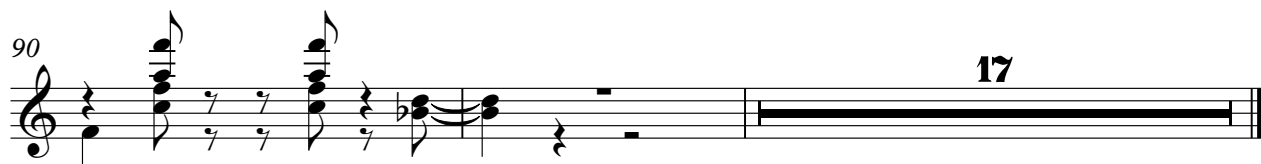


86



90

17



41



45



49



53



57



61



65



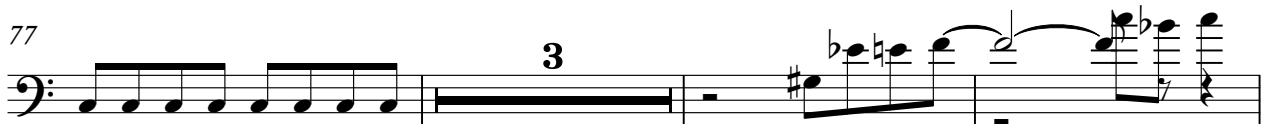
69



73



77



Electric Bass

83



87



92



96



100



104



106

