

John Mellencamp - Pink Houses

♩ = 120,000000

Drums

Electric Bass (finger)

Electric Bass(finger)

This system shows the first two measures of the song. The drums play a steady quarter-note pattern in the first measure, followed by a more complex pattern in the second measure. The electric bass (finger) part is silent in the first measure and then plays a series of eighth notes in the second measure. The electric bass (finger) part is silent in the first measure and then plays a series of eighth notes in the second measure.

3

Drums

Electric Bass (finger)

Electric Bass(finger)

This system shows measures 3 and 4. The drums play a steady quarter-note pattern in measure 3, followed by a more complex pattern in measure 4. The electric bass (finger) part is silent in measure 3 and then plays a series of eighth notes in measure 4. The electric bass (finger) part is silent in measure 3 and then plays a series of eighth notes in measure 4.

4

Drums

Electric Bass (finger)

Electric Bass(finger)

This system shows measures 5 and 6. The drums play a steady quarter-note pattern in measure 5, followed by a more complex pattern in measure 6. The electric bass (finger) part is silent in measure 5 and then plays a series of eighth notes in measure 6. The electric bass (finger) part is silent in measure 5 and then plays a series of eighth notes in measure 6.

5

Drums

Electric Bass (finger)

Electric Bass (finger)

Rock Organ

Synth Brass 2

Detailed description: This musical score covers measures 5 and 6. The key signature is one sharp (F#). The Drums part features a complex pattern of eighth and sixteenth notes with 'x' marks indicating cymbal hits. The two Electric Bass parts play a steady eighth-note line. The Rock Organ and Synth Brass 2 parts play a melodic line with a half-note and quarter-note rhythm.

7

Drums

Electric Bass (finger)

Rock Organ

Synth Brass 2

Detailed description: This musical score covers measures 7 and 8. The key signature is one sharp (F#). The Drums part continues with a consistent eighth-note pattern. The Electric Bass part plays a steady eighth-note line. The Rock Organ and Synth Brass 2 parts play a melodic line with a half-note and quarter-note rhythm.

10

Drums

Electric Bass(finger)

Rock Organ

Synth Brass 2

Detailed description: This system covers measures 10 and 11. The Drums part features a consistent snare and hi-hat pattern. The Electric Bass (finger) part plays a steady bass line in G major. The Rock Organ part has a single-note melodic line. The Synth Brass 2 part provides a harmonic accompaniment with chords and moving lines.

12

Drums

Electric Bass(finger)

Rock Organ

Synth Brass 2

Detailed description: This system covers measures 12, 13, and 14. The Drums part continues with the snare and hi-hat pattern. The Electric Bass part maintains the bass line. The Rock Organ part has a more sparse melodic line with several rests. The Synth Brass 2 part continues with its accompaniment.

15

Drums

Electric Bass(finger)

Rock Organ

Synth Brass 2

Detailed description: This system covers measures 15, 16, and 17. The Drums part continues with the snare and hi-hat pattern. The Electric Bass part maintains the bass line. The Rock Organ part has a single-note melodic line. The Synth Brass 2 part continues with its accompaniment.

18

Drums

Electric Bass(finger)

Rock Organ

Synth Brass 2

20

Drums

Electric Bass(finger)

Rock Organ

Synth Brass 2

23

Drums

Electric Bass(finger)

Rock Organ

Synth Brass 2

26

Drums

Electric Bass(finger)

Rock Organ

Synth Brass 2

29

Drums

Electric Bass(finger)

Rock Organ

Synth Brass 2

32

Drums

Electric Bass (finger)

Electric Bass(finger)

34

Drums

Electric Bass (finger)

Electric Bass (finger)

Rock Organ

Synth Brass 2

Detailed description: This system contains measures 34 and 35. The Drums part features a complex rhythmic pattern with various note values and rests. The first Electric Bass (finger) part plays a bass line with some chords and rests. The second Electric Bass (finger) part plays a simple, steady bass line. The Rock Organ part has a few notes and rests. The Synth Brass 2 part has a few notes and rests.

36

Drums

Electric Bass (finger)

Rock Organ

Synth Brass 2

Detailed description: This system contains measures 36 and 37. The Drums part continues with a rhythmic pattern. The Electric Bass (finger) part plays a bass line with some chords and rests. The Rock Organ part has a few notes and rests. The Synth Brass 2 part has a few notes and rests.

38

Drums

Electric Bass(finger)

Rock Organ

Synth Brass 2

40

Drums

Electric Bass(finger)

Rock Organ

Synth Brass 2

42

Drums

Electric Bass(finger)

Rock Organ

Synth Brass 2

45

Drums

Electric Bass(finger)

Rock Organ

Synth Brass 2

48

Drums

Electric Bass(finger)

Rock Organ

Synth Brass 2

50

Drums

Electric Bass(finger)

Rock Organ

Synth Brass 2

53

Drums

Electric Bass(finger)

Rock Organ

Synth Brass 2

56

Drums

Electric Bass(finger)

Rock Organ

Synth Brass 2

59

Drums

Electric Bass(finger)

Rock Organ

Synth Brass 2

62

Drums

Electric Bass (finger)

Electric Bass(finger)

63

Drums

Electric Bass (finger)

Electric Bass(finger)

64

Drums

Electric Bass (finger)

Electric Bass(finger)

65

Drums

Electric Bass (finger)

Electric Bass (finger)

Rock Organ

Synth Brass 2

Detailed description: This system contains measures 65 and 66. The Drums part features a complex pattern of eighth and sixteenth notes with various articulations. The two Electric Bass (finger) parts play a steady eighth-note bass line. The Rock Organ and Synth Brass 2 parts play a melodic line with a prominent eighth-note pattern and some sustained notes.

67

Drums

Electric Bass (finger)

Rock Organ

Synth Brass 2

Detailed description: This system contains measures 67 and 68. The Drums part continues with a consistent eighth-note pattern. The Electric Bass (finger) part maintains the eighth-note bass line. The Rock Organ and Synth Brass 2 parts play a melodic line with a mix of eighth and sixteenth notes, including some sustained notes.

70

Drums

Electric Bass(finger)

Rock Organ

Synth Brass 2



72

Drums

Electric Bass(finger)

Rock Organ

Synth Brass 2



75

Drums

Electric Bass(finger)

Rock Organ

Synth Brass 2



78

Drums

Electric Bass(finger)

Rock Organ

Synth Brass 2

80

Drums

Electric Bass(finger)

Rock Organ

Synth Brass 2

83

Drums

Electric Bass(finger)

Rock Organ

Synth Brass 2

86

Drums

Electric Bass(finger)

Rock Organ

Synth Brass 2

This system contains measures 86, 87, and 88. The Drums part features a steady eighth-note pattern. The Electric Bass (finger) part consists of quarter notes. The Rock Organ part has eighth-note lines. The Synth Brass 2 part includes block chords and eighth-note lines.

89

Drums

Electric Bass(finger)

Rock Organ

Synth Brass 2

This system contains measures 89, 90, and 91. The Drums part features a steady eighth-note pattern. The Electric Bass (finger) part consists of quarter notes. The Rock Organ part has eighth-note lines. The Synth Brass 2 part includes block chords and eighth-note lines.

92

Drums


Electric Bass (finger)

Electric Bass(finger)


This system contains measures 92, 93, and 94. The Drums part features an eighth-note pattern with accents. The Electric Bass (finger) part has eighth-note lines. The Electric Bass(finger) part consists of quarter notes.

93


Drums



Electric Bass (finger)




Electric Bass(finger)




Drum notation for measure 93 shows a complex pattern with various notes and rests. The Electric Bass (finger) part features a series of chords and single notes. The Electric Bass(finger) part has a simple line of notes.

94

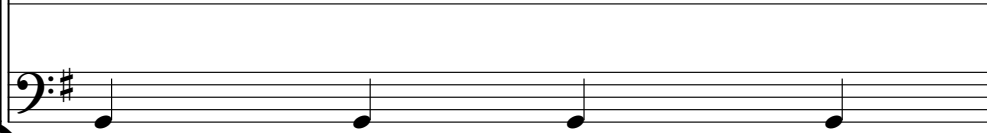
Drums



Electric Bass (finger)



Electric Bass(finger)



Drum notation for measure 94 includes a prominent snare drum pattern. The Electric Bass (finger) part has a more active line with some tied notes. The Electric Bass(finger) part continues with a simple melodic line.

95

Drums



Electric Bass(finger)



Rock Organ



Synth Brass 2



Drum notation for measure 95 shows a steady rhythm. The Electric Bass(finger) part has a simple line of notes. The Rock Organ part features a melodic line with some chords. The Synth Brass 2 part has a melodic line with some chords.

97

Drums

Electric Bass (finger)

Electric Bass(finger)

Rock Organ

Synth Brass 2

99

Drums

Electric Bass (finger)

Electric Bass(finger)

100

Drums

Electric Bass (finger)

Electric Bass(finger)

101

Drums

Electric Bass (finger)

Electric Bass(finger)

Rock Organ

Synth Brass 2

This musical score block covers measures 101, 102, and 103. It features five staves: Drums, Electric Bass (finger), Electric Bass(finger), Rock Organ, and Synth Brass 2. The Drums staff uses a drum set notation with various symbols for snare, bass drum, and cymbals. The Electric Bass (finger) and Electric Bass(finger) staves are in bass clef with a key signature of one sharp (F#). The Rock Organ and Synth Brass 2 staves are in treble clef with the same key signature. The music is written in a 4/4 time signature.

102

Drums

Electric Bass (finger)

Electric Bass(finger)

This musical score block covers measures 102 and 103. It features three staves: Drums, Electric Bass (finger), and Electric Bass(finger). The notation is consistent with the previous block, showing drum set notation and bass line notation in bass clef with a key signature of one sharp.

103

Drums

Electric Bass (finger)

Electric Bass(finger)

This musical score block covers measures 103 and 104. It features three staves: Drums, Electric Bass (finger), and Electric Bass(finger). The notation continues from the previous block, showing drum set notation and bass line notation in bass clef with a key signature of one sharp.

104

Drums

Electric Bass (finger)

Electric Bass(finger)

105

Drums

Electric Bass (finger)

Electric Bass(finger)

106

Drums

Electric Bass (finger)

Electric Bass(finger)

John Mellencamp - Pink Houses

Drums

♩ = 120,000000

Drum notation for measures 1-4. The first measure shows a 4/4 time signature and a double bar line. The notation includes various drum symbols such as snare, hi-hat, and bass drum, with some notes marked with 'x' to indicate specific sounds or techniques.

4

Drum notation for measures 5-8. The notation continues with various drum symbols and patterns, including a double bar line at the end of the eighth measure.

6

Drum notation for measures 9-12. The notation shows a consistent pattern of drum symbols across these four measures.

10

Drum notation for measures 13-16. The notation continues with the same pattern of drum symbols.

14

Drum notation for measures 17-20. The notation continues with the same pattern of drum symbols.

18

Drum notation for measures 21-24. The notation continues with the same pattern of drum symbols.

22

Drum notation for measures 25-28. The notation continues with the same pattern of drum symbols.

26

Drum notation for measures 29-32. The notation continues with the same pattern of drum symbols.

30

Drum notation for measures 33-36. The notation continues with the same pattern of drum symbols.

34

Drum notation for measures 37-40. The notation continues with the same pattern of drum symbols.

V.S.

38



42



46



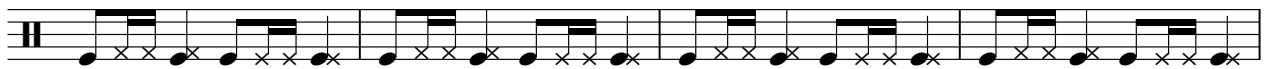
50



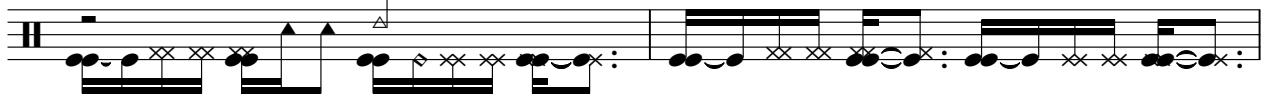
54



58



62



64



66



70



74



78



82



86



90



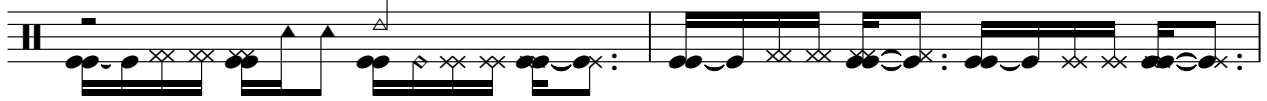
93



95



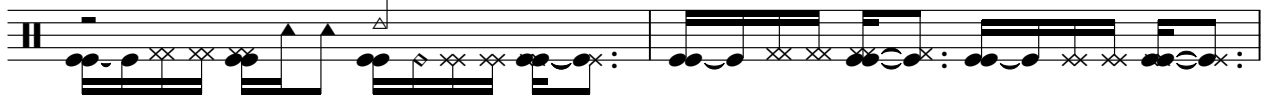
98



100



102

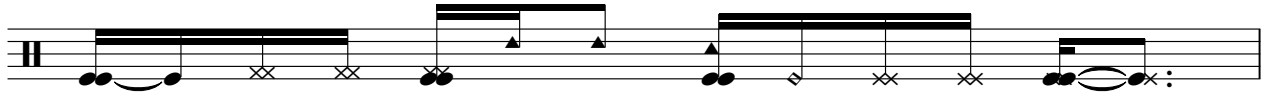


V.S.

4

Drums

104



105



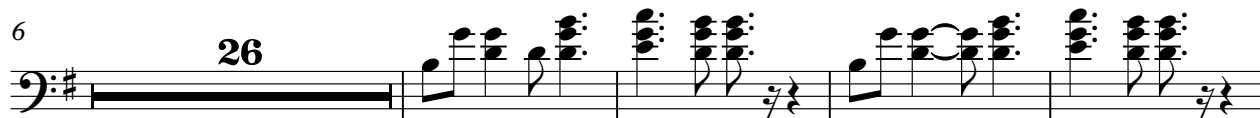
Electric Bass (finger)

John Mellencamp - Pink Houses

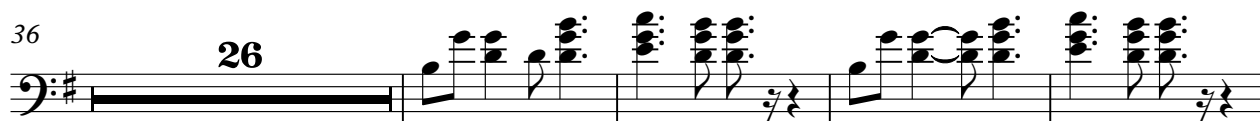
♩ = 120,000000



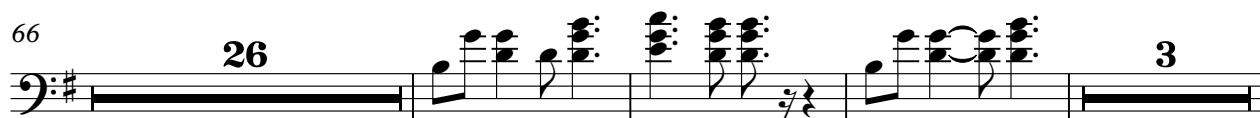
6 **26**



36 **26**



66 **26** **3**



98



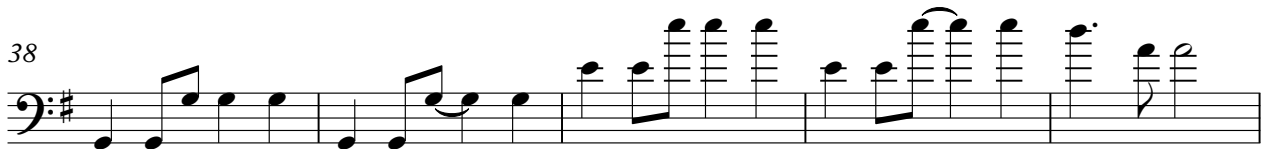
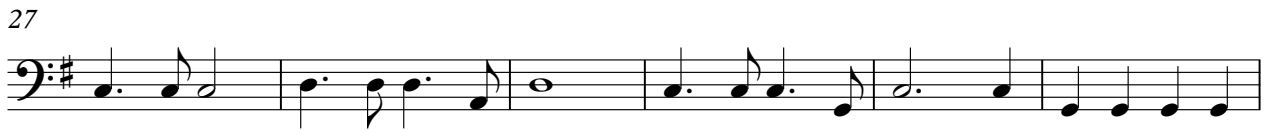
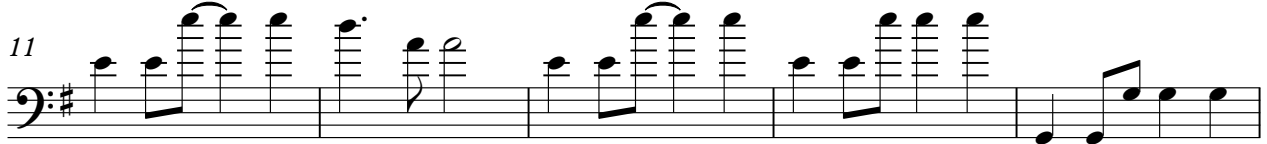
103



Electric Bass(finger)

John Mellencamp - Pink Houses

♩ = 120,000000



V.S.

53



59



65



70



75



80



85



91



97



102



Rock Organ

John Mellencamp - Pink Houses

♩ = 120,000000

4

9

13

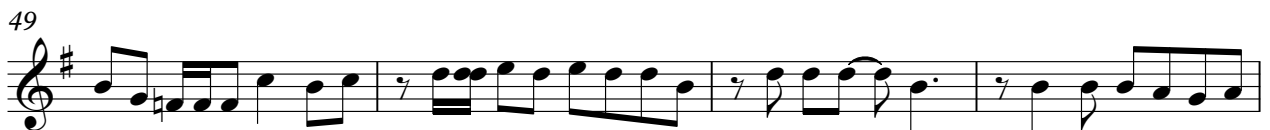
18

22

26

29

3



72



77



81



85



89



95



98



John Mellencamp - Pink Houses

Synth Brass 2

♩ = 120,000000

4

9

13

18

22

26

29

3

35



40



44



49



53



57



62



69



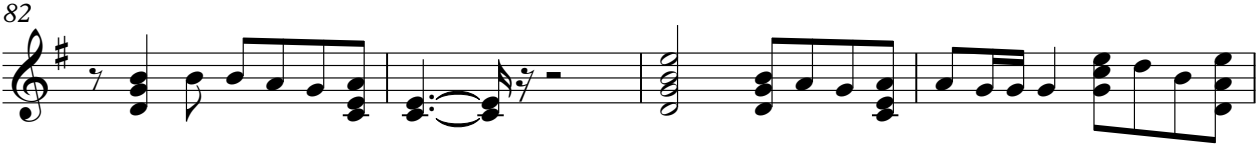
73



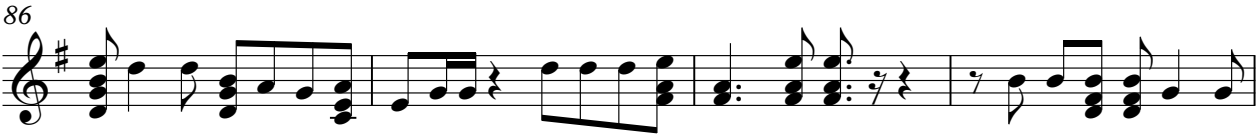
78



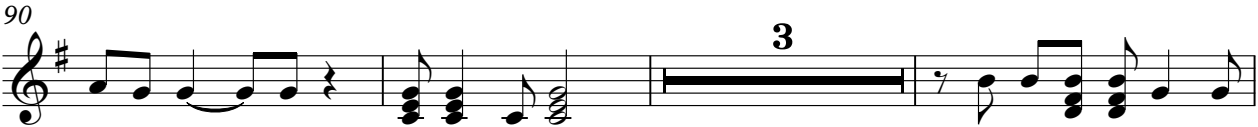
82



86



90



96

