

# Led Zeppelin - Good Times Bad Times

♩ = 91,000092

Melody

Drum

Guitar 2

Guitar 3

Guitar 1

Bass



5

Melody

Drum

Guitar 2

Guitar 1

Bass

7

Melody

Drum

Guitar 2

Guitar 1

Bass

Vocals 1

TAB: T 6 4, A 2 2, B 2 2

TAB: 0 2 3 2 3 2 0 4 2 4 4 0 1



9

Melody

Drum

Guitar 2

Guitar 1

Bass

Vocals 1

TAB: T 6 6, A 2 2, B 2 2

TAB: 0 2 3 2 3 2 0 4 2 4 4 0 1

11

Melody

Drum

Guitar 2

Guitar 1  
T A B  
6 4 4 5 4 2 2

Bass

Vocals 1



13

Melody

Drum

Guitar 2

Guitar 1  
T A B  
0 0 2 2

Bass

Vocals 1

15

Melody

Drum

Guitar 2

Guitar 1

Bass

Vocals 1



17

Melody

Drum

Guitar 2

Guitar 1

Bass

Vocals 1

Vocals 2

19

Melody

Drum

Guitar 2

Guitar 1

Bass

Vocals 1

Vocals 2



21

Melody

Drum

Guitar 2

Guitar 1

Bass

Vocals 1

Vocals 2

23

Melody

Drum

Guitar 2

Guitar 1

Bass

Vocals 1

Vocals 2



25

Melody

Drum

Guitar 2

Guitar 1

Bass

27

Melody

Drum

Guitar 2

Guitar 1

Bass

TAB for Guitar 1:

|   |   |   |   |   |   |   |   |   |   |
|---|---|---|---|---|---|---|---|---|---|
| T |   |   |   |   |   |   |   |   |   |
| A | 4 | 4 |   | 4 | 2 | 4 | 4 | 4 | 4 |
| B | 4 | 4 | 4 |   | 2 | 2 | 4 | 4 | 4 |
|   | 2 | 2 |   |   |   |   | 2 | 2 | 2 |



29

Melody

Drum

Guitar 2

Guitar 1

Bass

TAB for Guitar 1:

|   |   |   |   |   |   |   |   |   |   |
|---|---|---|---|---|---|---|---|---|---|
| T |   |   |   |   |   |   |   |   |   |
| A | 4 | 4 |   | 4 | 4 | 4 | 4 | 4 | 4 |
| B | 4 | 4 | 4 |   | 2 | 2 | 4 | 4 | 4 |
|   | 2 | 2 |   |   |   |   | 2 | 2 | 2 |

31

Melody

Drum

Guitar 2

Guitar 1

Bass

Vocals 1

Vocals 2

33

Melody

Drum

Guitar 2

Guitar 1

Bass

Vocals 1

Vocals 2



34

Melody

Melody staff in treble clef with a key signature of one sharp (F#). The staff contains a sequence of eighth and quarter notes, including a triplet of eighth notes and a half note.

Drum

Drum staff in a standard 2/4 time signature. It features a complex rhythmic pattern with various note values and rests, including a sixteenth-note triplet.

Guitar 2

Guitar 2 staff in treble clef with a key signature of one flat (Bb). It features a melodic line with a triplet of eighth notes and a half note.

Guitar 1

|   |   |   |   |   |   |  |   |   |   |   |   |   |
|---|---|---|---|---|---|--|---|---|---|---|---|---|
| T |   |   |   | 0 | 0 |  |   |   |   |   |   |   |
| A | 6 | 6 | 6 | 4 | 4 |  | 3 |   |   |   |   |   |
| B | 4 | 4 | 4 | 4 | 4 |  |   | 6 | 6 | 6 | 6 | 6 |
|   |   |   |   |   |   |  |   | 4 | 4 | 4 | 4 | 4 |

Bass

Bass staff in bass clef with a key signature of one sharp (F#). It features a melodic line with eighth and quarter notes.

Vocals 1

Vocals 1 staff in treble clef with a key signature of one sharp (F#). It features a melodic line with eighth and quarter notes.

Vocals 2

Vocals 2 staff in treble clef with a key signature of one sharp (F#). It features a melodic line with eighth and quarter notes.

36

Melody

Drum

Guitar 2

Guitar 3

Guitar 1

Bass

Vocals 1

Vocals 2



38

Drum

Guitar 2

Guitar 3

Guitar 1

Bass

40

Drum

Guitar 2

Guitar 3

Guitar 1

Bass

T 0 0

A 2 2 2 2

B 2 2 0 0



41

Drum

Guitar 2

Guitar 3

Guitar 1

Bass

T 0 0 0 0

A 2 2 2 2 2 2 2 2

B 2 2 0 0 0 0 0 0

43

Drum

Guitar 2

Guitar 3

Guitar 1

Bass

Vocals 1

Vocals 2

Detailed description: This system covers measures 43 and 44. The Drum part features a complex rhythmic pattern with many 'x' marks indicating cymbal hits. Guitar 2 has a melodic line with various accidentals. Guitar 3 has a sparse, rhythmic accompaniment. Guitar 1 includes a TAB section with fret numbers: T (0 0), A (2 2), B (2 2) for the first measure, and T (2 2), A (0 0), B (0 0) for the second measure. The Bass line is a steady eighth-note pattern. Vocals 1 and 2 are silent in this section.



45

Melody

Drum

Guitar 2

Guitar 1

Bass

Vocals 1

Vocals 2

Detailed description: This system covers measures 45 and 46. A new Melody part is introduced in the first measure. The Drum part continues with a similar pattern but includes a triplet (marked '3') and a sextuplet (marked '6') in the second measure. Guitar 2 has a melodic line with a sharp sign. Guitar 1 includes a TAB section with fret numbers: T (2 2), A (2 2), B (0 0) for the first measure, and T (2 2), A (0 0), B (0 0) for the second measure. The Bass line continues with eighth notes. Vocals 1 and 2 have vocal lines with a key signature of one sharp (F#).

47

Melody



Drum



Guitar 2



Guitar 1

|   |   |   |   |   |   |   |   |   |   |   |   |   |   |   |
|---|---|---|---|---|---|---|---|---|---|---|---|---|---|---|
| T | 0 | 4 | 2 | 2 |   | 0 | 4 | 2 | 2 | 0 | 0 | 2 | 2 | 2 |
| A |   |   | 4 | 4 | 2 |   |   | 4 | 4 | 4 | 4 | 4 | 4 | 4 |
| B |   |   |   |   | 2 | 1 |   |   |   |   |   |   |   |   |

Bass



Vocals 1



Vocals 2



49

Melody

Drum

Guitar 2

Guitar 3

Guitar 1

Bass

Vocals 1

Vocals 2



51

Melody

Drum

Guitar 2

Guitar 3

Guitar 1

Bass

53

Melody

Drum

Guitar 2

Guitar 3

Guitar 1

Bass

TAB for Guitar 1:  
 T: 0 2 3 2 3 2 0 4 2 4 4 0 1 4 4 0 5 4 2  
 A:  
 B:



55

Melody

Drum

Guitar 2

Guitar 3

Guitar 1

Bass

TAB for Guitar 1:  
 T: 0 2 3 2 3 2 0 4 2 4 4 0 1 0 0 2 2  
 A:  
 B:

57

Melody

Drum

Guitar 2

Guitar 3

Guitar 1

Bass

TAB for Guitar 1:  
T: 0 2 3 2 3 2 0 4 2 | 0 0  
A: 0 2 3 2 3 2 0 4 2 | 2 2  
B: 4 4 0 1 | 4 4



59

Melody

Drum

Guitar 2

Guitar 3

Guitar 1

Bass

TAB for Guitar 1:  
T: 0 2 3 2 3 2 0 4 2 | 0 0  
A: 0 2 3 2 3 2 0 4 2 | 2 2  
B: 4 4 0 1 | 4 4



61

Melody

Drum

Guitar 2

Guitar 3

Guitar 1

Bass

T 0 2 3 2 3 2 0 4 2 4 4 0 1 0 4

A 0 2 2 2

B 4 4 0 1 2 2

6 3 3 3



63

Melody

Drum

Guitar 2

Guitar 3

Guitar 1

Bass

T 0 2 3 2 3 2 0 4 2 4 4 0 1 4 4

A 0 2 2 2 6 6

B 4 4 2 2

65

Drum

Guitar 2

Guitar 3

Guitar 1

Bass

T A B

0 2 3 2 3 2 0 4 2 4 4 0 1 4 4 0 1 2 2

3 3 3 6

Detailed description: This block contains the musical notation for measures 65 and 66. It features five staves: Drum, Guitar 2, Guitar 3, Guitar 1, and Bass. The Drum staff shows a complex rhythmic pattern with various note values and rests. Guitar 2 and 3 have melodic lines with accidentals and articulation marks. Guitar 1 includes a guitar tab with fret numbers (0, 2, 3, 2, 3, 2, 0, 4, 2, 4, 4, 0, 1, 4, 4, 0, 1, 2, 2) and a treble clef. The Bass staff provides a low-frequency accompaniment. Measure numbers 65 and 66 are indicated at the start of the first and second measures respectively. A double bar line is present at the end of measure 66.



67

Melody

Drum

Guitar 2

Guitar 3

Guitar 1

Bass

Vocals 1

Vocals 2

T A B

0 2 3 2 3 2 0 4 2 4 4 0 1 0 0 2 2

Detailed description: This block contains the musical notation for measures 67, 68, and 69. It features seven staves: Melody, Drum, Guitar 2, Guitar 3, Guitar 1, Bass, and two Vocals staves (Vocals 1 and Vocals 2). The Melody staff is currently empty. The Drum staff continues with its rhythmic pattern. Guitar 2 and 3 have melodic lines. Guitar 1 includes a guitar tab with fret numbers (0, 2, 3, 2, 3, 2, 0, 4, 2, 4, 4, 0, 1, 0, 0, 2, 2) and a treble clef. The Bass staff provides a low-frequency accompaniment. Measure numbers 67, 68, and 69 are indicated at the start of the first, second, and third measures respectively. Double bar lines are present at the end of measures 68 and 69.

# Led Zeppelin - Good Times Bad Times

## Melody

♩ = 91,000092

5

10

15

20

23

26

29

32

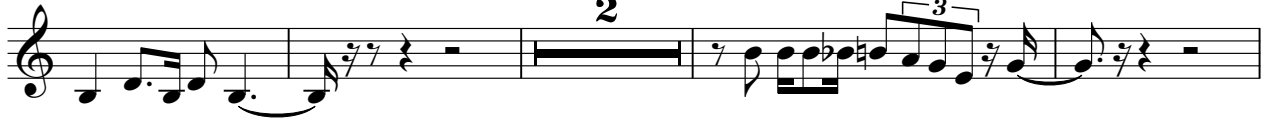
35

8

45



48



54



58



62



# Led Zeppelin - Good Times Bad Times

## Drum

♩ = 91,000092

5

8

11

14

17

20

22

25

28

V.S.

31

Musical notation for drum part 31. It consists of two staves. The top staff has a treble clef and contains a series of eighth notes with 'x' marks above them, indicating a specific drum sound. The bottom staff has a bass clef and contains a series of eighth notes.

33

Musical notation for drum part 33. It consists of two staves. The top staff has a treble clef and contains eighth notes with 'x' marks. The bottom staff has a bass clef and contains eighth notes. There are bracketed groups of three notes in the bottom staff, with the number '3' below them, and a group of six notes with the number '6' below them.

35

Musical notation for drum part 35. It consists of two staves. The top staff has a treble clef and contains eighth notes with 'x' marks. The bottom staff has a bass clef and contains eighth notes. There is a double bar line with repeat dots in the middle of the system.

38

Musical notation for drum part 38. It consists of two staves. The top staff has a treble clef and contains eighth notes with 'x' marks. The bottom staff has a bass clef and contains eighth notes. There are bracketed groups of three notes in the bottom staff, with the number '3' below them.

40

Musical notation for drum part 40. It consists of two staves. The top staff has a treble clef and contains eighth notes with 'x' marks. The bottom staff has a bass clef and contains eighth notes. There are bracketed groups of six, three, and three notes in the bottom staff, with the numbers '6', '3', and '3' below them.

42

Musical notation for drum part 42. It consists of two staves. The top staff has a treble clef and contains eighth notes with 'x' marks. The bottom staff has a bass clef and contains eighth notes. There is a bracketed group of six notes in the bottom staff, with the number '6' below it.

44

Musical notation for drum part 44. It consists of two staves. The top staff has a treble clef and contains eighth notes with 'x' marks. The bottom staff has a bass clef and contains eighth notes.

46

Musical notation for drum part 46. It consists of two staves. The top staff has a treble clef and contains eighth notes with 'x' marks. The bottom staff has a bass clef and contains eighth notes. There are bracketed groups of three and six notes in the bottom staff, with the numbers '3' and '6' below them.

48

Musical notation for drum part 48. It consists of two staves. The top staff has a treble clef and contains eighth notes with 'x' marks. The bottom staff has a bass clef and contains eighth notes.

51

Musical notation for drum part 51. It consists of two staves. The top staff has a treble clef and contains eighth notes with 'x' marks. The bottom staff has a bass clef and contains eighth notes.

Drum

54

Musical notation for measure 54, featuring a drum staff with a snare drum and a guitar staff with a bass line. The snare drum has a triplet of eighth notes marked with an asterisk. The guitar staff has a bass line with a triplet of eighth notes marked with a '6'.

57

Musical notation for measure 57, featuring a drum staff with a snare drum and a guitar staff with a bass line. The snare drum has a triplet of eighth notes marked with an asterisk.

59

Musical notation for measure 59, featuring a drum staff with a snare drum and a guitar staff with a bass line. The snare drum has a triplet of eighth notes marked with an asterisk.

61

Musical notation for measure 61, featuring a drum staff with a snare drum and a guitar staff with a bass line. The snare drum has a triplet of eighth notes marked with an asterisk.

64

Musical notation for measure 64, featuring a drum staff with a snare drum and a guitar staff with a bass line. The snare drum has a triplet of eighth notes marked with an asterisk.

66

Musical notation for measure 66, featuring a drum staff with a snare drum and a guitar staff with a bass line. The snare drum has a triplet of eighth notes marked with an asterisk. The guitar staff has a triplet of eighth notes marked with a '6'.

# Led Zeppelin - Good Times Bad Times

## Guitar 2

♩ = 91,000092

6

10

13

16

19

24

27

29

31

V.S.



34



38



43



48



52



55



58



61



64



67



# Led Zeppelin - Good Times Bad Times

## Guitar 3

♩ = 91,000092

35

38

41

43

4

50

53

57

62

65

2

This musical score for guitar 3 is written in 4/4 time with a tempo of 91,000092. It consists of ten staves of music, each starting with a measure number. The notation includes various rhythmic patterns, including eighth and sixteenth notes, and rests. Fingering numbers (1-4) are placed above notes. Brackets with numbers (3, 4, 6) indicate triplets and sextuplets. A thick black bar is used to denote a full-measure rest. The score concludes with a double bar line.

# Led Zeppelin - Good Times Bad Times

## Guitar 1

♩ = 91,000092

|   |     |     |     |     |
|---|-----|-----|-----|-----|
| E | 4 4 | 4 4 | 4 0 | 0 4 |
| B | 0 0 | 0 0 | 0 0 | 0 0 |
| G | 1 1 | 1 1 | 1 1 | 1 1 |
| D | 2 2 | 2 2 | 2 2 | 2 2 |
| A |     |     |     |     |
| E |     |     |     |     |

6

|   |     |     |                   |     |
|---|-----|-----|-------------------|-----|
| T | 4 0 | 0 4 | 4 4               | 4 4 |
| A | 0 0 | 0 0 | 0 2 3 2 3 2 0 4 2 | 0 0 |
| B | 1 1 | 2 2 | 0 2 3 2 3 2 0 4 2 | 2 2 |
|   | 2 2 |     | 4 4 0 1           |     |

10

|   |                   |       |                   |     |
|---|-------------------|-------|-------------------|-----|
| T | 0 2 3 2 3 2 0 4 2 | 4 4   | 0 2 3 2 3 2 0 4 2 | 0 0 |
| A | 0 2 3 2 3 2 0 4 2 | 0 5 4 | 0 2 3 2 3 2 0 4 2 | 0 0 |
| B | 0 2 3 2 3 2 0 4 2 | 2 2   | 0 2 3 2 3 2 0 4 2 | 2 2 |
|   | 4 4 0 1           |       | 4 4 0 1           |     |

14

|   |                   |     |                   |     |
|---|-------------------|-----|-------------------|-----|
| T | 0 2 3 2 3 2 0 4 2 | 0 0 | 0 2 3 2 3 2 0 4 2 | 0 0 |
| A | 0 2 3 2 3 2 0 4 2 | 2 2 | 0 2 3 2 3 2 0 4 2 | 2 2 |
| B | 0 2 3 2 3 2 0 4 2 |     | 0 2 3 2 3 2 0 4 2 |     |
|   | 4 4 0 1           |     | 4 4 0 1           |     |

18

|   |                   |       |       |           |
|---|-------------------|-------|-------|-----------|
| T | 0 2 3 2 3 2 0 4 2 | 0 0 0 | 0 0 0 | 0 2 2     |
| A | 0 2 3 2 3 2 0 4 2 | 2 2 2 | 2 2 2 | 0 4 4 2 1 |
| B | 0 2 3 2 3 2 0 4 2 | 0 4   | 0 4   | 2 2       |
|   | 4 4 0 1           |       |       |           |

22

|   |       |       |         |           |
|---|-------|-------|---------|-----------|
| T | 0 4 2 | 2 2   | 2 2 2   | 2 2 0 2 0 |
| A | 4 4   | 0 0 4 | 0 4 4 4 | 4 4 4 2 4 |
| B | 4 4   | 4 4   | 4 4 4   | 4 4 4 2 4 |
|   | 4 4   |       | 4 4     | 4 2 4     |
|   |       | ?     | 2 2     | 2 2       |

25

|   |             |           |           |           |
|---|-------------|-----------|-----------|-----------|
| T | 2 2 2       | 2 2 2     | 2 2 2     | 2 2 2     |
| A | 2 0 2 2 0 0 | 2 0 2 0   | 2 0 2 0 0 | 2 0 2 0 0 |
| B | 4 4 4 4 2 4 | 4 4 4 2 4 | 4 4 4 2 4 | 4 4 4 2 4 |
|   | 2 2         | 2 2       | 2 2       | 2 2       |

28

|   |             |             |             |             |
|---|-------------|-------------|-------------|-------------|
| T | 2 2 2       | 2 2 2       | 2 2 2       | 2 2 2       |
| A | 2 0 2 0     | 2 0 2 2 0 0 | 2 0 2 0 0   | 2 0 2 0 0   |
| B | 4 4 4 4 2 4 | 4 4 4 4 2 4 | 4 4 4 4 2 4 | 4 4 4 4 2 4 |
|   | 2 2 2       | 2 2         | 2 2         | 2 2         |

31

|   |             |           |           |           |
|---|-------------|-----------|-----------|-----------|
| T | 2 2 2       | 2 2 1     | 2 2 1     | 0 0 3     |
| A | 2 0 2 2 0 0 | 2 2 1     | 2 2 1     | 0 0 3     |
| B | 4 4 4 4 2 4 | 4 4 4 2 2 | 4 4 4 2 2 | 6 6 6 4 4 |
|   | 2 2         | 2 2       | 2 2       | 4 4       |

35

|   |               |     |     |     |
|---|---------------|-----|-----|-----|
| T |               | 0 0 | 2 2 | 0 0 |
| A | 6 6 6 6 6 6 6 | 6   | 2 2 | 2 2 |
| B | 4 4 4 4 4 4 4 | 4   | 0 0 | 0 0 |
|   |               |     | 0 0 | 0 0 |

V.S.

|   |     |     |     |     |
|---|-----|-----|-----|-----|
| T | 0 0 | 0 0 | 0 0 | 0 0 |
| A | 2 2 | 2 2 | 2 2 | 2 2 |
| B | 2 2 | 0 0 | 0 0 | 0 0 |

43

|   |     |     |           |           |
|---|-----|-----|-----------|-----------|
| T | 0 0 | 0 0 | 2 2 2 0 0 | 2 2 2 0 0 |
| A | 2 2 | 0 2 | 2 2       | 0 2       |
| B | 2 2 | 0 0 | 2 2       | 0 0       |

47

|   |         |         |         |         |     |
|---|---------|---------|---------|---------|-----|
| T | 0 4 2 2 | 0 4 2 2 | 0 4 2 2 | 0 4 2 2 | 0 4 |
| A | 4 4     | 4 4     | 0 4     | 0 4     | 0 4 |
| B | 2 1     | 4       | 4       | 4       | 2 2 |

51

|   |         |         |         |         |
|---|---------|---------|---------|---------|
| T | 0 2 3 3 | 0 2 3 3 | 0 2 3 3 | 0 2 3 3 |
| A | 2 2     | 2 2     | 2 2     | 2 2     |
| B | 0 4     | 0 4     | 0 4     | 0 4     |

55

|   |         |         |         |         |
|---|---------|---------|---------|---------|
| T | 0 2 3 3 | 0 2 3 3 | 0 2 3 3 | 0 2 3 3 |
| A | 2 2     | 2 2     | 2 2     | 2 2     |
| B | 0 4     | 0 4     | 0 4     | 0 4     |

59

|   |         |         |         |         |
|---|---------|---------|---------|---------|
| T | 0 2 3 3 | 0 2 3 3 | 0 2 3 3 | 0 2 3 3 |
| A | 2 2     | 2 2     | 2 2     | 2 2     |
| B | 0 4     | 0 4     | 0 4     | 0 4     |

63

|   |         |         |         |         |
|---|---------|---------|---------|---------|
| T | 0 2 3 3 | 0 2 3 3 | 0 2 3 3 | 0 2 3 3 |
| A | 2 2     | 2 2     | 2 2     | 2 2     |
| B | 0 4     | 0 4     | 0 4     | 0 4     |

66

|   |     |         |         |         |
|---|-----|---------|---------|---------|
| T | 4 4 | 0 2 3 3 | 0 2 3 3 | 0 2 3 3 |
| A | 6 5 | 2 2     | 2 2     | 2 2     |
| B | 2 2 | 0 4     | 0 4     | 0 4     |

# Led Zeppelin - Good Times Bad Times

Bass

♩ = 91,000092



34



37



40



43



46



49



53



56



60



64



67

Musical notation for bass guitar, measure 67. The notation is on a single staff with a bass clef. It begins with a treble clef-like symbol (a '7' with a slash) indicating a natural harmonium. The first measure contains a quarter note G2, a quarter note A2, and a quarter note B2. The second measure contains a quarter note C3, a quarter note D3, and a quarter note E3. The third measure contains a quarter note F3, a quarter note G3, and a quarter note A3. The fourth measure contains a quarter note B3, a quarter note C4, and a quarter note D4. The fifth measure contains a quarter note E4, a quarter note F4, and a quarter note G4. The sixth measure contains a quarter note A4, a quarter note B4, and a quarter note C5. The seventh measure contains a quarter note D5, a quarter note E5, and a quarter note F5. The eighth measure contains a quarter note G5, a quarter note A5, and a quarter note B5. The ninth measure contains a quarter note C6, a quarter note D6, and a quarter note E6. The tenth measure contains a quarter note F6, a quarter note G6, and a quarter note A6. The eleventh measure contains a quarter note B6, a quarter note C7, and a quarter note D7. The twelfth measure contains a quarter note E7, a quarter note F7, and a quarter note G7. The thirteenth measure contains a quarter note A7, a quarter note B7, and a quarter note C8. The fourteenth measure contains a quarter note D8, a quarter note E8, and a quarter note F8. The fifteenth measure contains a quarter note G8, a quarter note A8, and a quarter note B8. The sixteenth measure contains a quarter note C9, a quarter note D9, and a quarter note E9. The seventeenth measure contains a quarter note F9, a quarter note G9, and a quarter note A9. The eighteenth measure contains a quarter note B9, a quarter note C10, and a quarter note D10. The nineteenth measure contains a quarter note E10, a quarter note F10, and a quarter note G10. The twentieth measure contains a quarter note A10, a quarter note B10, and a quarter note C11. The notation ends with a double bar line.

# Led Zeppelin - Good Times Bad Times

## Vocals 1

♩ = 91,000092

6

11

17

21

7

32

36

7

47

49

19



# Led Zeppelin - Good Times Bad Times

## Vocals 2

♩ = 91,000092

17



21

7




32



36

7



47



49

19

